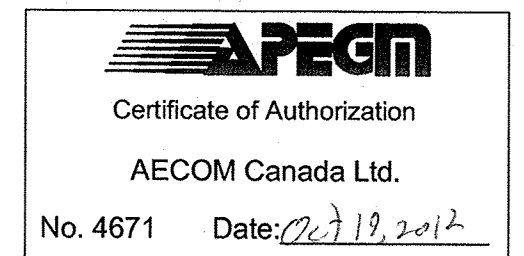


- NOTES**
1. USE RAYCHEM SEFL REGULATING HEATING CABLE 10BTV-CR WITH LOW PROFILE END SEAL KIT E-150.
  2. USE RAYCHEM POWER CONNECTION KIT JBM-100-EP.

**HEAT TRACE CABLE CONTROL SCHEMATIC**  
SCALE: NTS

COORDINATE WIRING INSIDE SCADA PANEL WITH CITY AND ENGINEER. FIELD TERMINALS AND INTERNAL WIRING TO I/O CARD WILL BE REQUIRED



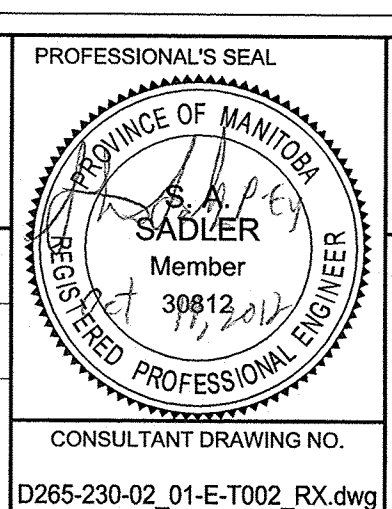
**LOCATION APPROVED UNDERGROUND STRUCTURES**

NO.	REVISIONS	DATE	BY
1	RE-ISSUED FOR CONSTRUCTION	12/10/18	WJd
0	ISSUED FOR CONSTRUCTION	11/05/09	WJd

**NOTE:**  
LOCATION OF UNDERGROUND STRUCTURES AS SHOWN ARE BASED ON THE BEST INFORMATION AVAILABLE, BUT NO GUARANTEE IS GIVEN THAT ALL EXISTING UTILITIES ARE SHOWN OR THAT THE GIVEN LOCATIONS ARE EXACT. CONFIRMATION OF EXISTENCE AND EXACT LOCATION OF ALL SERVICES MUST BE OBTAINED FROM THE INDIVIDUAL UTILITIES BEFORE PROCEEDING WITH CONSTRUCTION.

**AECOM**

DESIGNED BY	BM	CHECKED BY	[Signature]
DRAWN BY	SCK	APPROVED BY	[Signature]
HOR. SCALE	AS NOTED	RELEASED FOR CONSTRUCTION	
VERT. SCALE	AS NOTED	DATE	



**THE CITY OF WINNIPEG WATER AND WASTE DEPARTMENT**

**REHABILITATION / REPLACEMENT OF THE MIDTOWN FEEDERMAIN AT THE ASSINIBOINE RIVER**

**ELECTRICAL SCHEMATICS**

BID OPPORTUNITY NO. 830-2012

SHEET 14 OF 19

CITY DRAWING NUMBER D-12239

REV 1