

**APPENDIX C – SITE PHOTOGRAPHS**



01\_S\_Bank\_Toe\_027\_080530\_DY.jpg



02\_N\_Bank\_From\_South\_041\_080530\_DY.jpg



04\_N\_Bank\_Toe\_078\_080530\_DY.jpg



05\_N\_Bank\_From\_South\_044\_080530\_DY.jpg



05\_N\_Bridge\_and\_Piers\_064\_080530\_DY.jpg



11\_S\_Pipe\_Approaches\_024\_080530\_DY.jpg



12\_N\_Bank\_From\_South\_053\_080530\_DY.jpg



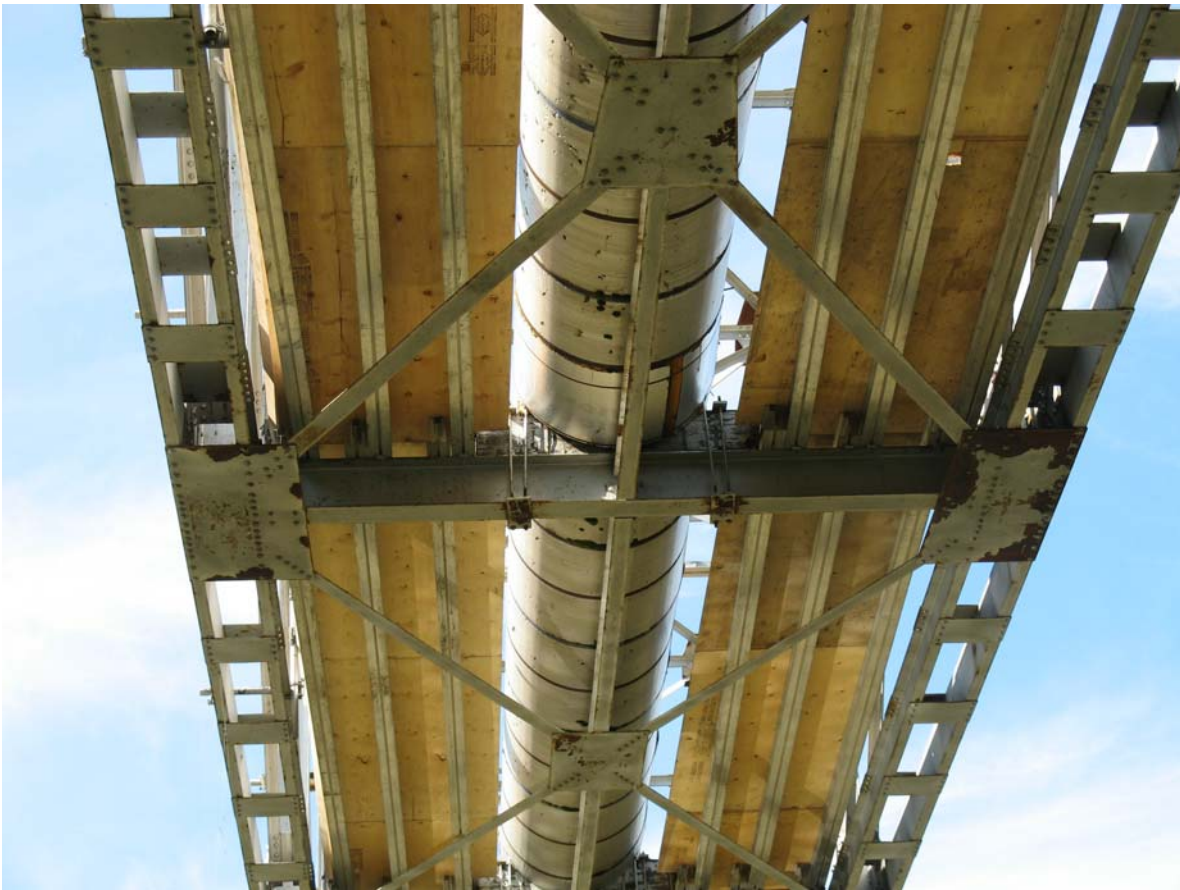
15\_S\_Bridge\_and\_Piers\_195\_080530\_DY.jpg



16\_N\_Pipe\_Approaches\_088\_080530\_DY.jpg



A3-01 - East Elevation form NE .JPG



A3-02 - Closeup of Bottom of Bridge (with temp walkways on top).JPG



A3-03 - Closeup of Typ Floor Beam and Pipe Cradle (with temp walkways in place).JPG



A3-04 - Member i-l West Half Bottom Flange Deformed at Holddown for Pipe.JPG



A3-05- Member i=l West Half Bottom Flange Deformed at Pipe Holddown.JPG





A3-06 - Top of Bridge East Half.JPG



A3-07 - Top of Bridge West half.JPG



A3-08 - Top of Bridge.JPG



A3-09 - Pipe Insulation and Cladding-South End.JPG



A3-10 - Existing Pipeline and Insulation on Bridge.jpg



A3-11 - Existing Pipe Coatings, Insulation and Cladding.jpg



A3-12 - Existing Pipe Coating.jpg