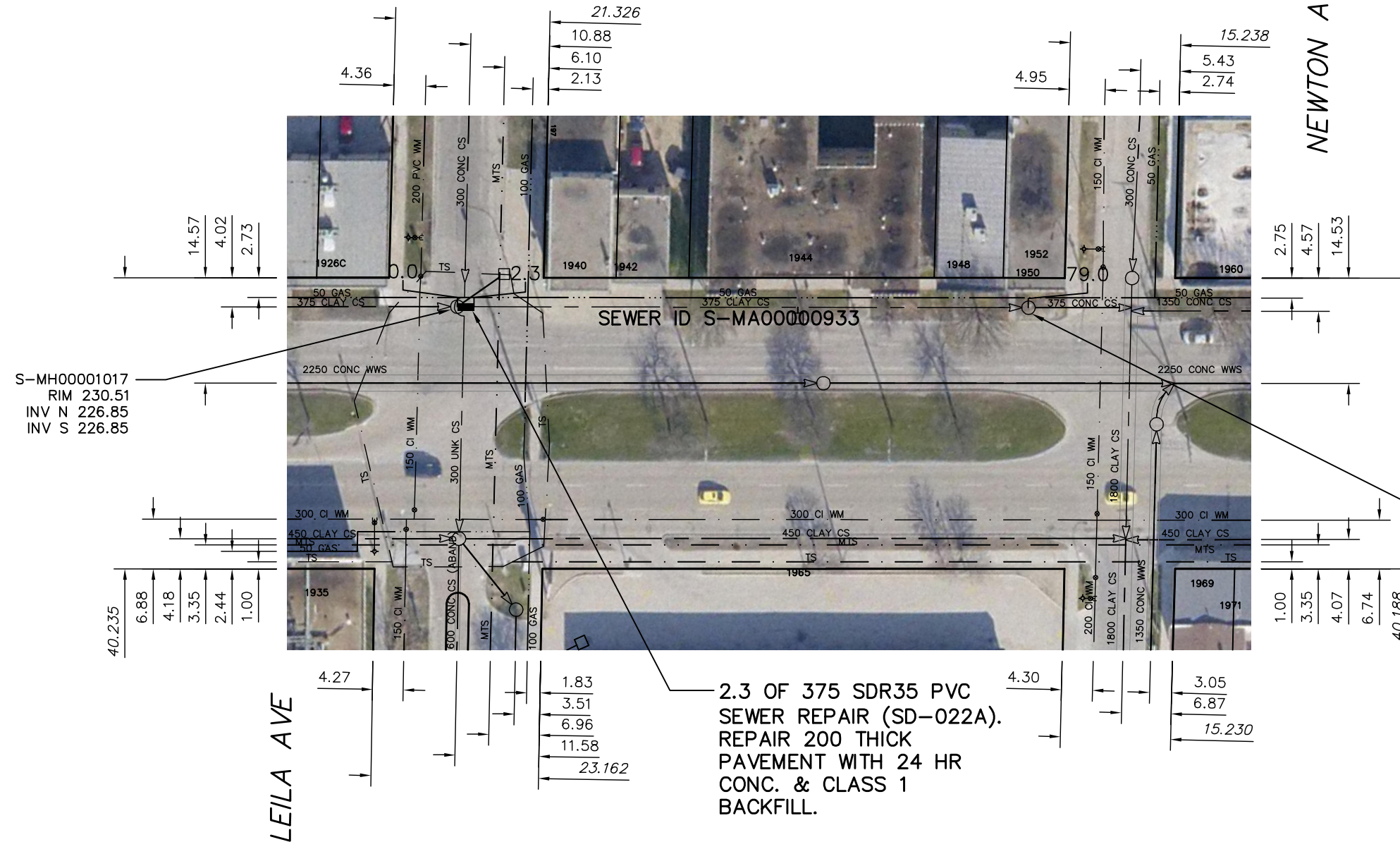


MAIN STREET



NEWTON AVE



SEWER JUNCTION INFORMATION FROM SEWER VIDEO INSPECTION		
SEWER ID S-MA00000933		
DISTANCE FROM MH ID S-MH00001017		
DISTANCE	DIAMETER	CLOCK
16.5	150	10
48.8	250	10
49.0	150	12
73.9	100	11

S-MH00000670
RIM 230.64
INV N
INV S 226.17

2.3 OF 375 SDR35 PVC SEWER REPAIR (SD-022A). REPAIR 200 THICK PAVEMENT WITH 24 HR CONC. & CLASS 1 BACKFILL.

WARNING

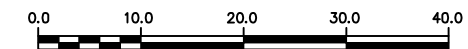
IF POWER EQUIPMENT OR EXPLOSIVES ARE TO BE USED FOR EXCAVATION ON THIS PROJECT THE CONTRACTOR MUST:

- 1) NOTIFY THE GAS COMPANY OF THE PROPOSED LOCATION OF EXCAVATION.
- 2) TAKE PRECAUTION TO AVOID DAMAGE TO GAS COMPANY INSTALLATIONS.

SEE PROVINCIAL REGULATION 210/72 FOR DETAILS

METRIC

WHOLE NUMBERS INDICATE MILLIMETRES
DECIMALIZED NUMBERS INDICATE METRES



LOCATION APPROVED
UNDERGROUND STRUCTURES

SUPV. U/G STRUCTURES COMMITTEE DATE

NOTE:
LOCATION OF UNDERGROUND STRUCTURES AS SHOWN ARE BASED ON THE BEST INFORMATION AVAILABLE BUT NO GUARANTEE IS GIVEN THAT ALL EXISTING UTILITIES ARE SHOWN OR THAT THE GIVEN LOCATIONS ARE EXACT. CONFIRMATION OF EXISTENCE AND EXACT LOCATION OF ALL SERVICES MUST BE OBTAINED FROM THE INDIVIDUAL UTILITIES BEFORE PROCEEDING WITH CONSTRUCTION.

B.M. ELEV.			
CONSTRUCTION COMPLETION DATE: YYYY MM DD			
NO.	REVISIONS	DATE	BY

DESIGNED BY	SC	CHECKED BY	SC
DRAWN BY	JB	APPROVED BY	KZ
SCALE:	1:750	RELEASED FOR CONSTRUCTION	
HORIZONTAL			
VERTICAL			
DATE	2012 11 06	DATE	

ENGINEER'S SEAL

ORIGINAL SIGNED BY
S.R.J. COURNOYER
12-11-07

CONSULTANT DRAWING NUMBER
-



THE CITY OF WINNIPEG
WATER AND WASTE DEPARTMENT
ENGINEERING DIVISION

2012 SEWER RENEWALS & REPAIRS

SHEET 26 OF 45

MAIN STREET (W PL)
MH AT LEILA AVENUE TO
MH AT NEWTON AVENUE (S PL)

CITY DRAWING NUMBER

10393

PLOT DATE: 2012 11 14

BID OPPORTUNITY: 825-2012
CONTRACT NUMBER: 12

FILE PATH: R:\DRAWINGS\SEWER\2012_RENEWALS\CIPP, TPR, and EPR\CONTRACT 12\EPR\
FILE NAME: MAIN.dwg