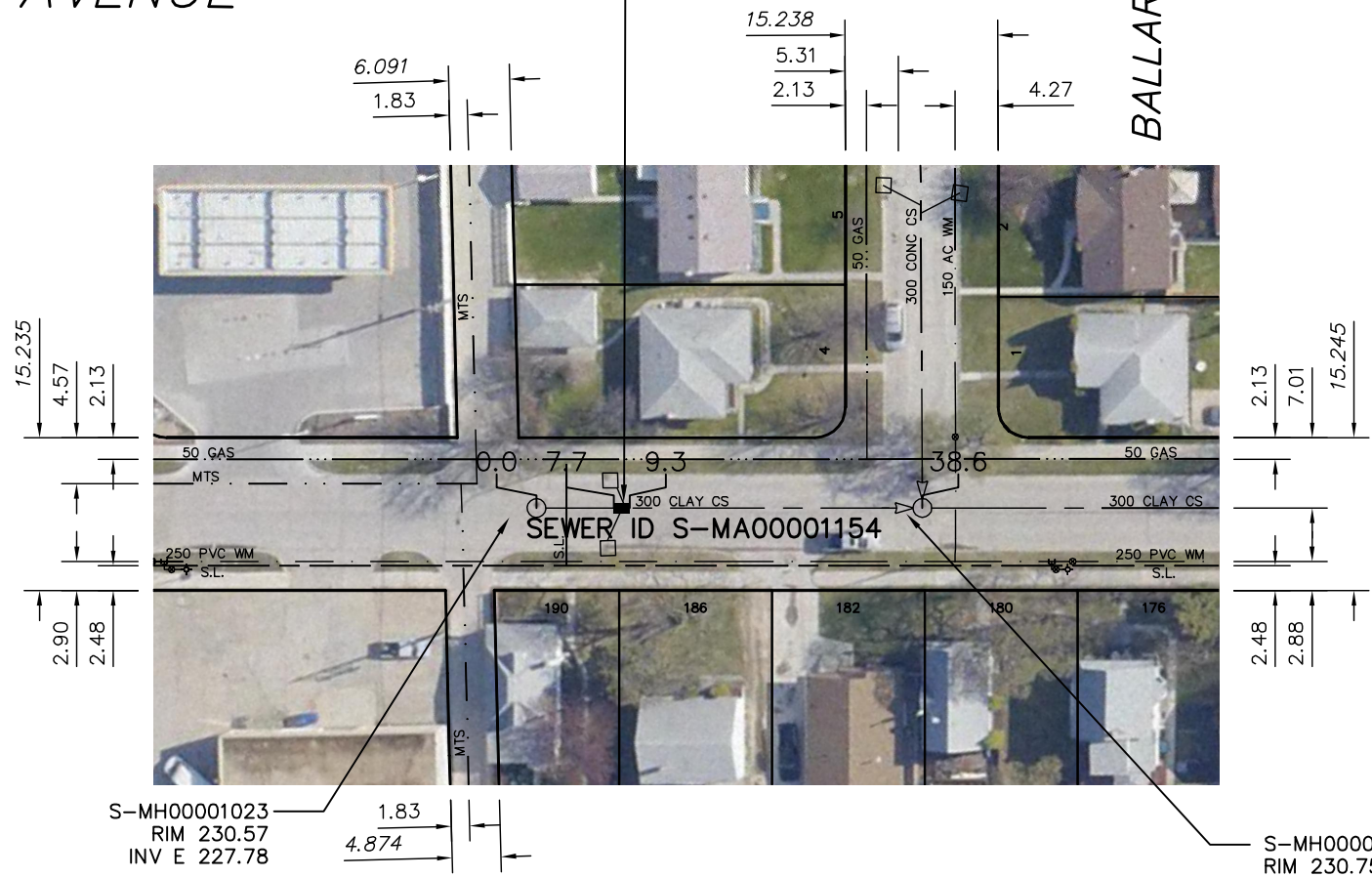
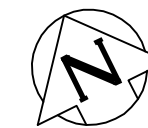


FORREST AVENUE

1.6 OF 300 SDR35 PVC
SEWER REPAIR (SD-022A),
INCLUDING 2 SERVICE
CONNECTIONS.

BALLARD CR



SEWER JUNCTION INFORMATION FROM SEWER VIDEO INSPECTION		
SEWER ID S-MA00001154		
DISTANCE FROM MH ID S-MH00001022		
DISTANCE	DIAMETER	CLOCK
2.0	150	10
6.6	150	10
16.7	150	10
20.5	200	10

SEWER JUNCTION INFORMATION FROM SEWER VIDEO INSPECTION		
SEWER ID S-MA00001154		
DISTANCE FROM MH ID S-MH00001023		
DISTANCE	DIAMETER	CLOCK
5.4	150	2
8.5	150	11
8.6	150	2

S-MH00001023
RIM 230.57
INV E 227.78

S-MH00001022
RIM 230.75
INV N 226.85
INV E 226.25
INV W 226.25

WARNING

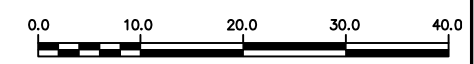
IF POWER EQUIPMENT OR EXPLOSIVES
ARE TO BE USED FOR EXCAVATION ON
THIS PROJECT THE CONTRACTOR MUST:

- 1) NOTIFY THE GAS COMPANY OF THE PROPOSED LOCATION OF EXCAVATION.
- 2) TAKE PRECAUTION TO AVOID DAMAGE TO GAS COMPANY INSTALLATIONS.

SEE PROVINCIAL REGULATION 210/72 FOR DETAILS

METRIC

WHOLE NUMBERS INDICATE MILLIMETRES
DECIMALIZED NUMBERS INDICATE METRES



LOCATION APPROVED
UNDERGROUND STRUCTURES

SUPV. U/G STRUCTURES COMMITTEE DATE

NOTE:
LOCATION OF UNDERGROUND STRUCTURES AS SHOWN ARE BASED ON THE BEST INFORMATION AVAILABLE BUT NO GUARANTEE IS GIVEN THAT ALL EXISTING UTILITIES ARE SHOWN OR THAT THE GIVEN LOCATIONS ARE EXACT. CONFIRMATION OF EXISTENCE AND EXACT LOCATION OF ALL SERVICES MUST BE OBTAINED FROM THE INDIVIDUAL UTILITIES BEFORE PROCEEDING WITH CONSTRUCTION.

B.M. ELEV.			
CONSTRUCTION COMPLETION DATE: YYYY MM DD			
NO.	REVISIONS	DATE	BY

DESIGNED BY	SC	CHECKED BY	SC
DRAWN BY	JB	APPROVED BY	KZ
SCALE:	1:750	RELEASED FOR CONSTRUCTION	
HORIZONTAL			
VERTICAL			
DATE	2012 11 06	DATE	
PLOT DATE:	2012 11 14		

ENGINEER'S SEAL

ORIGINAL
SIGNED BY
S.R.J.
COURNOYER
12-11-07

CONSULTANT DRAWING NUMBER
-



THE CITY OF WINNIPEG

WATER AND WASTE DEPARTMENT
ENGINEERING DIVISION

2012 SEWER RENEWALS & REPAIRS

FORREST AVENUE
1ST MH E OF MAIN STREET TO
MH AT BALLARD CRESCENT (W LEG)

SHEET 14 OF 45
CITY DRAWING NUMBER
10380