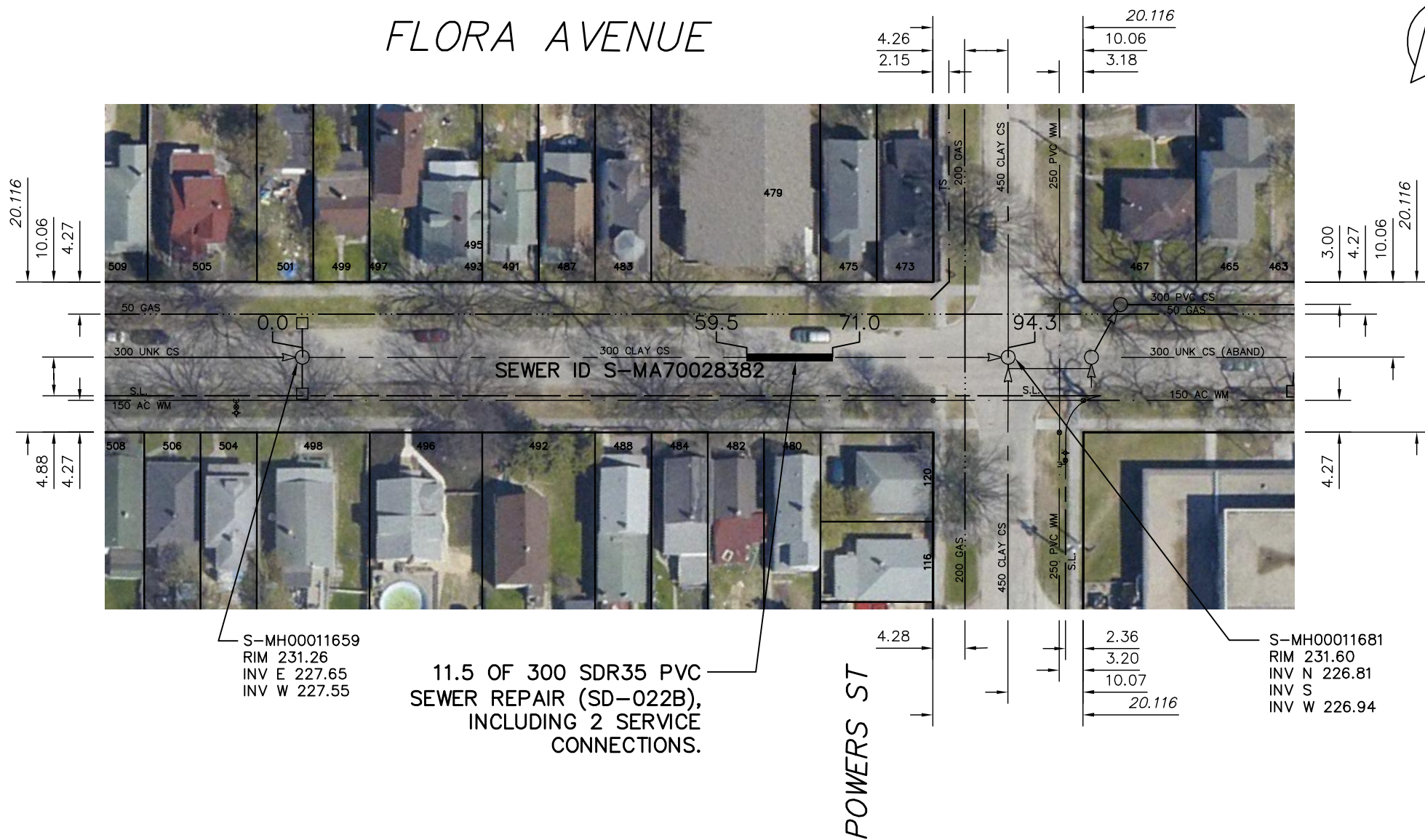
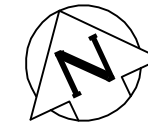


# FLORA AVENUE



11.5 OF 300 SDR35 PVC SEWER REPAIR (SD-022B), INCLUDING 2 SERVICE CONNECTIONS.

S-MH00011659  
RIM 231.26  
INV E 227.65  
INV W 227.55

S-MH00011681  
RIM 231.60  
INV N 226.81  
INV S  
INV W 226.94

### WARNING

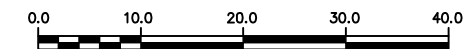
IF POWER EQUIPMENT OR EXPLOSIVES ARE TO BE USED FOR EXCAVATION ON THIS PROJECT THE CONTRACTOR MUST:

- 1) NOTIFY THE GAS COMPANY OF THE PROPOSED LOCATION OF EXCAVATION.
- 2) TAKE PRECAUTION TO AVOID DAMAGE TO GAS COMPANY INSTALLATIONS.

SEE PROVINCIAL REGULATION 210/72 FOR DETAILS

### METRIC

WHOLE NUMBERS INDICATE MILLIMETRES  
DECIMALIZED NUMBERS INDICATE METRES



LOCATION APPROVED  
UNDERGROUND STRUCTURES

SUPV. U/G STRUCTURES COMMITTEE DATE

NOTE:

LOCATION OF UNDERGROUND STRUCTURES AS SHOWN ARE BASED ON THE BEST INFORMATION AVAILABLE BUT NO GUARANTEE IS GIVEN THAT ALL EXISTING UTILITIES ARE SHOWN OR THAT THE GIVEN LOCATIONS ARE EXACT. CONFIRMATION OF EXISTENCE AND EXACT LOCATION OF ALL SERVICES MUST BE OBTAINED FROM THE INDIVIDUAL UTILITIES BEFORE PROCEEDING WITH CONSTRUCTION.

B.M. ELEV.			
CONSTRUCTION COMPLETION DATE: YYYY MM DD			
NO.	REVISIONS	DATE	BY

DESIGNED BY	SC	CHECKED BY	SC
DRAWN BY	JB	APPROVED BY	KZ
SCALE:	1:750	RELEASED FOR CONSTRUCTION	
HORIZONTAL			
VERTICAL			
DATE	2012 11 06	DATE	
PLOT DATE:	2012 11 14		

ENGINEER'S SEAL

ORIGINAL SIGNED BY  
S.R.J. COURNOYER  
12-11-07

CONSULTANT DRAWING NUMBER



**THE CITY OF WINNIPEG**  
WATER AND WASTE DEPARTMENT  
ENGINEERING DIVISION

2012 SEWER RENEWALS & REPAIRS

SHEET 13 OF 45

FLORA AVENUE  
1ST MH E OF ANDREWS STREET TO  
MH AT POWERS STREET (Q)

CITY DRAWING NUMBER

10379