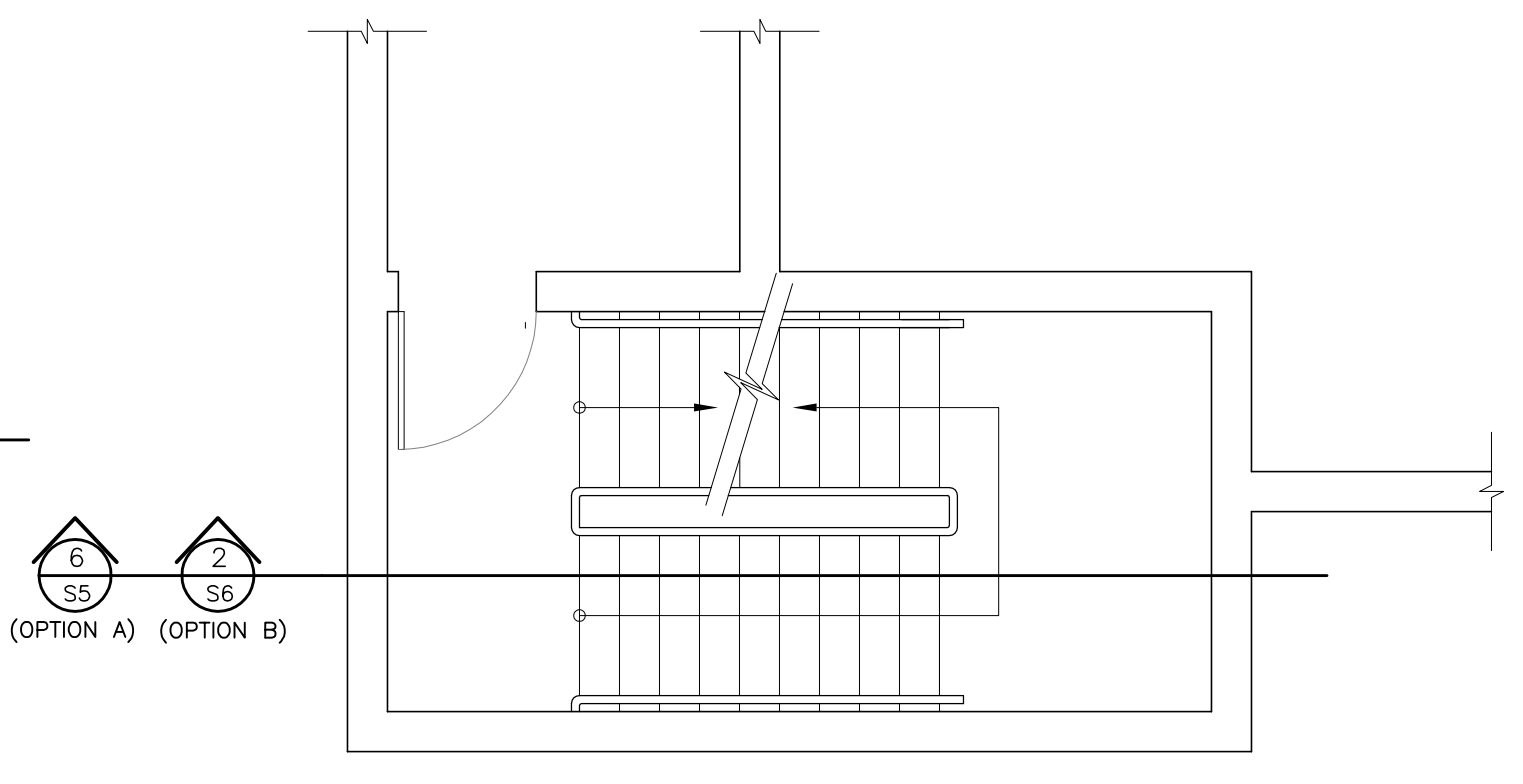
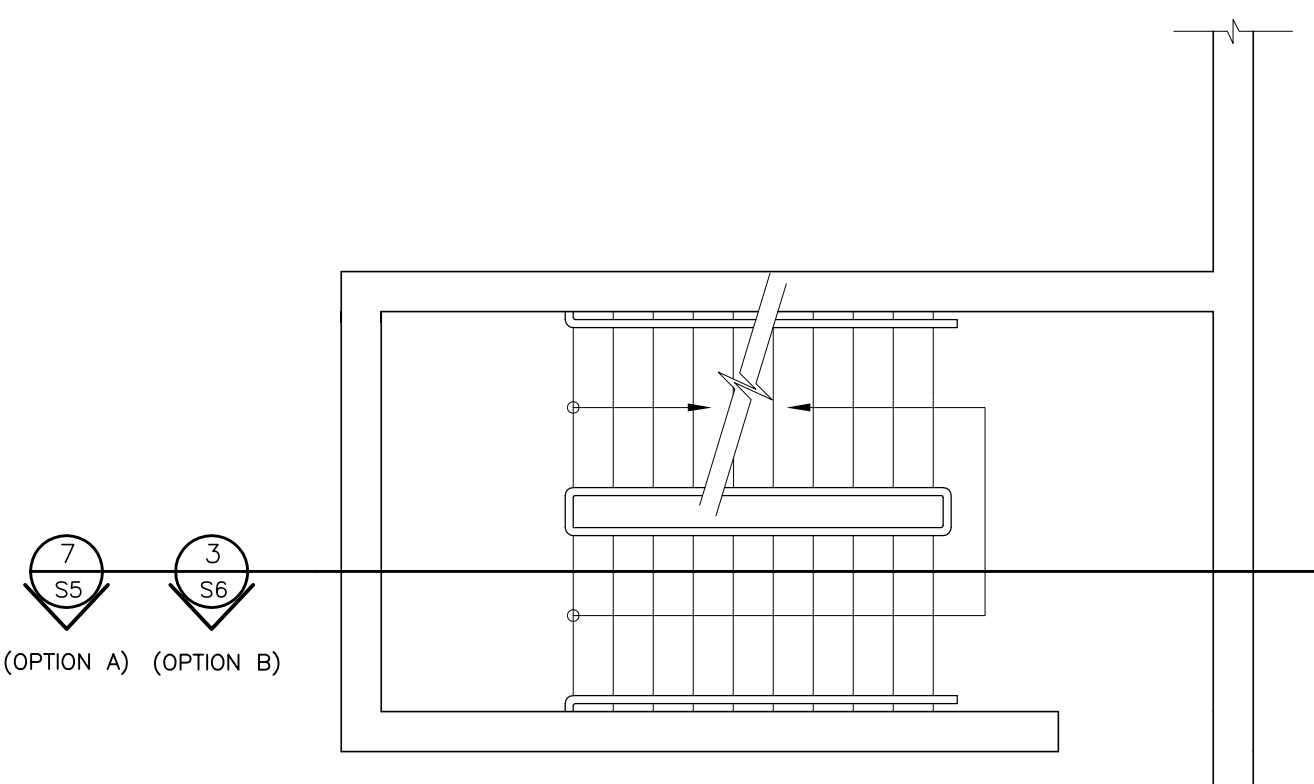


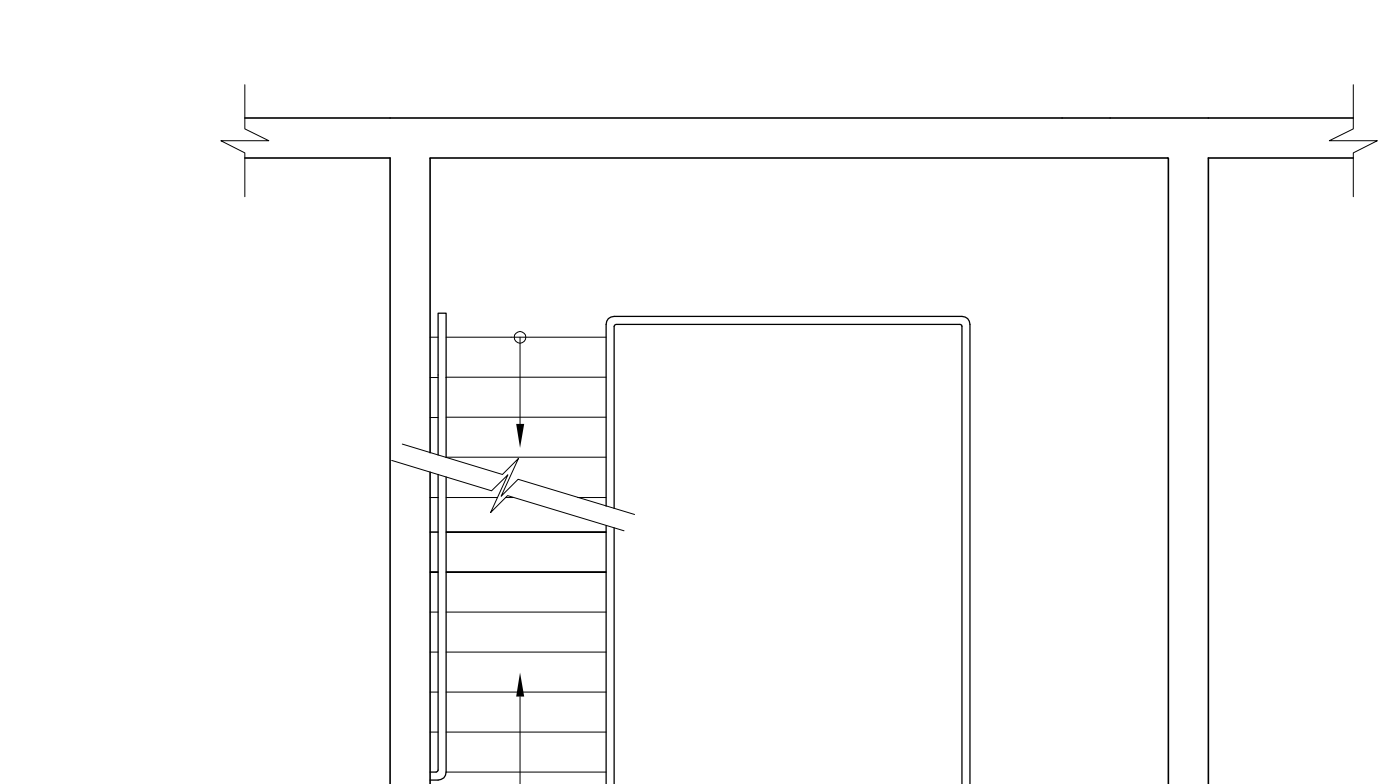
1 STAIR PLAN NO. 8
SCALE: 1/4"=1'-0"



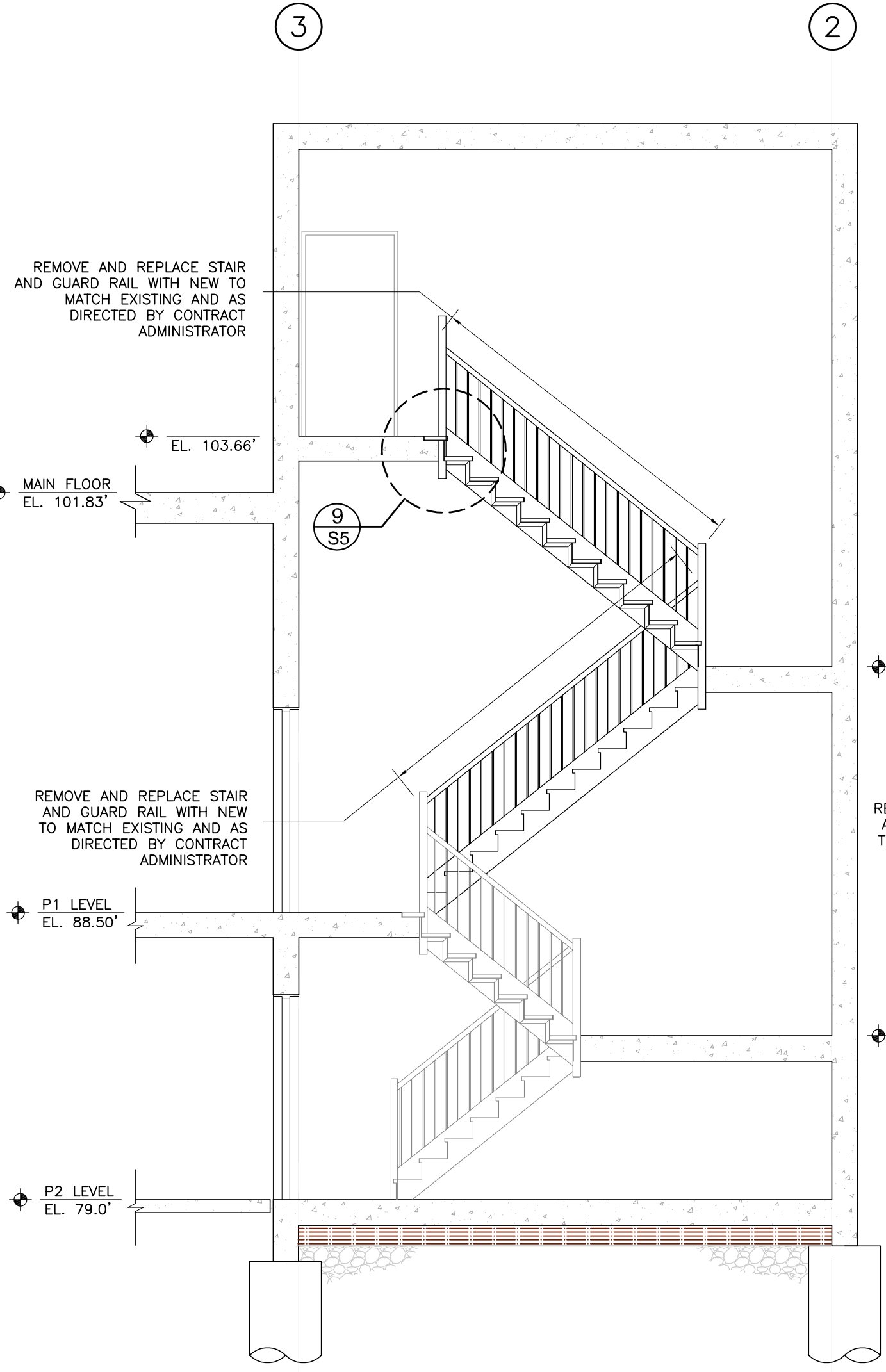
2 STAIR PLAN NO. 7
SCALE: 1/4"=1'-0"



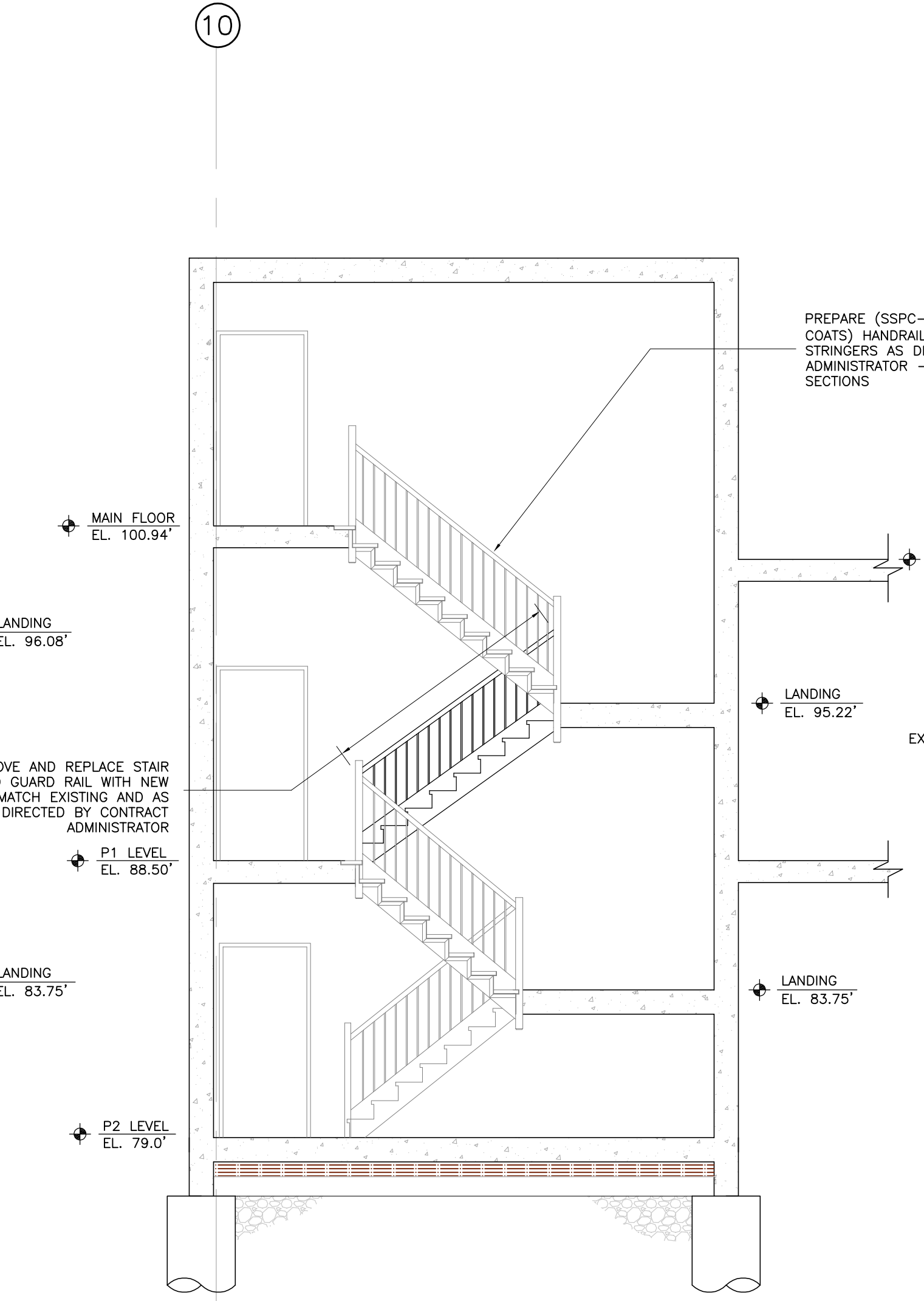
3 STAIR PLAN NO. 3
SCALE: 1/4"=1'-0"



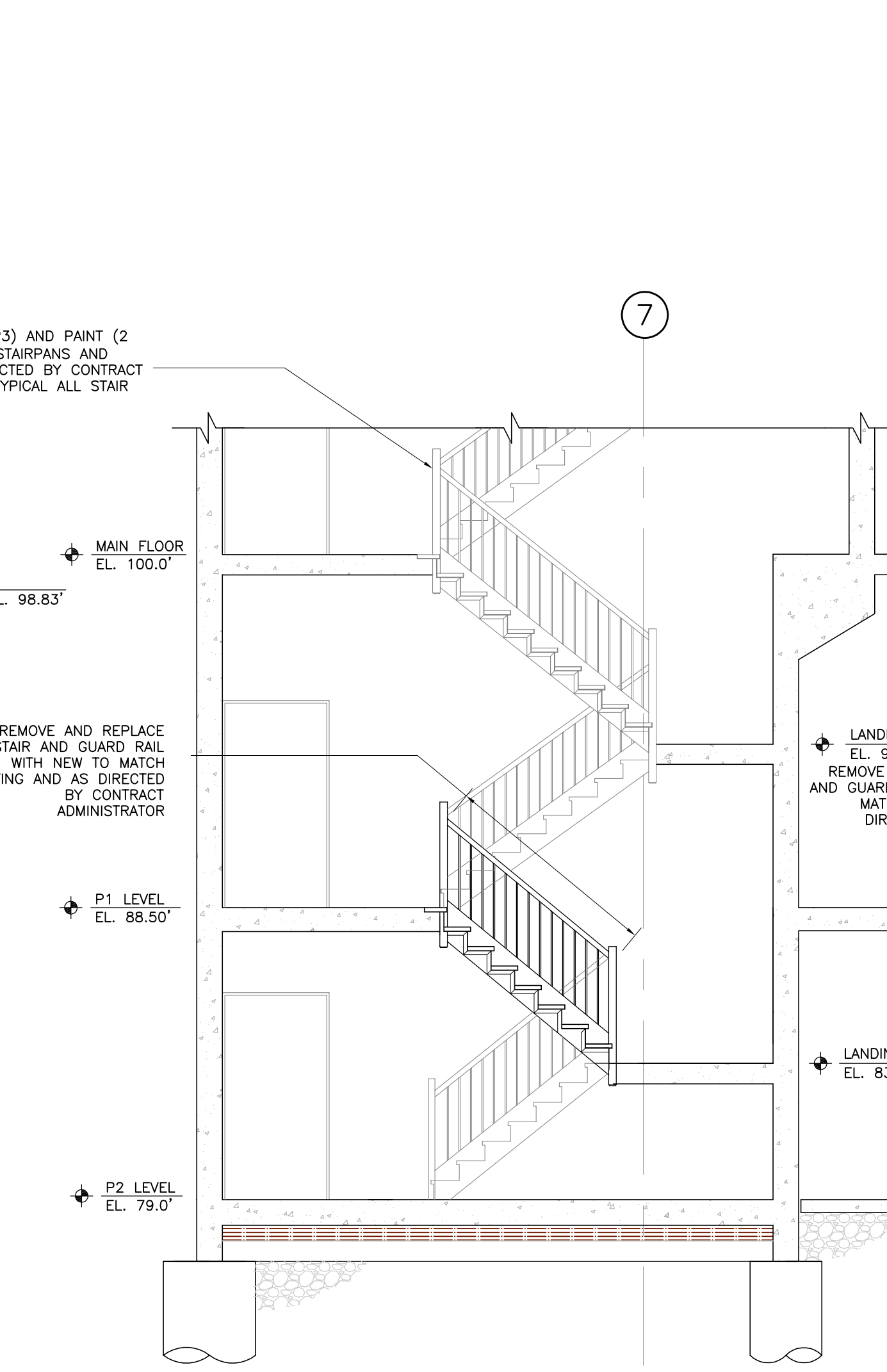
4 STAIR PLAN NO. 1
SCALE: 1/4"=1'-0"



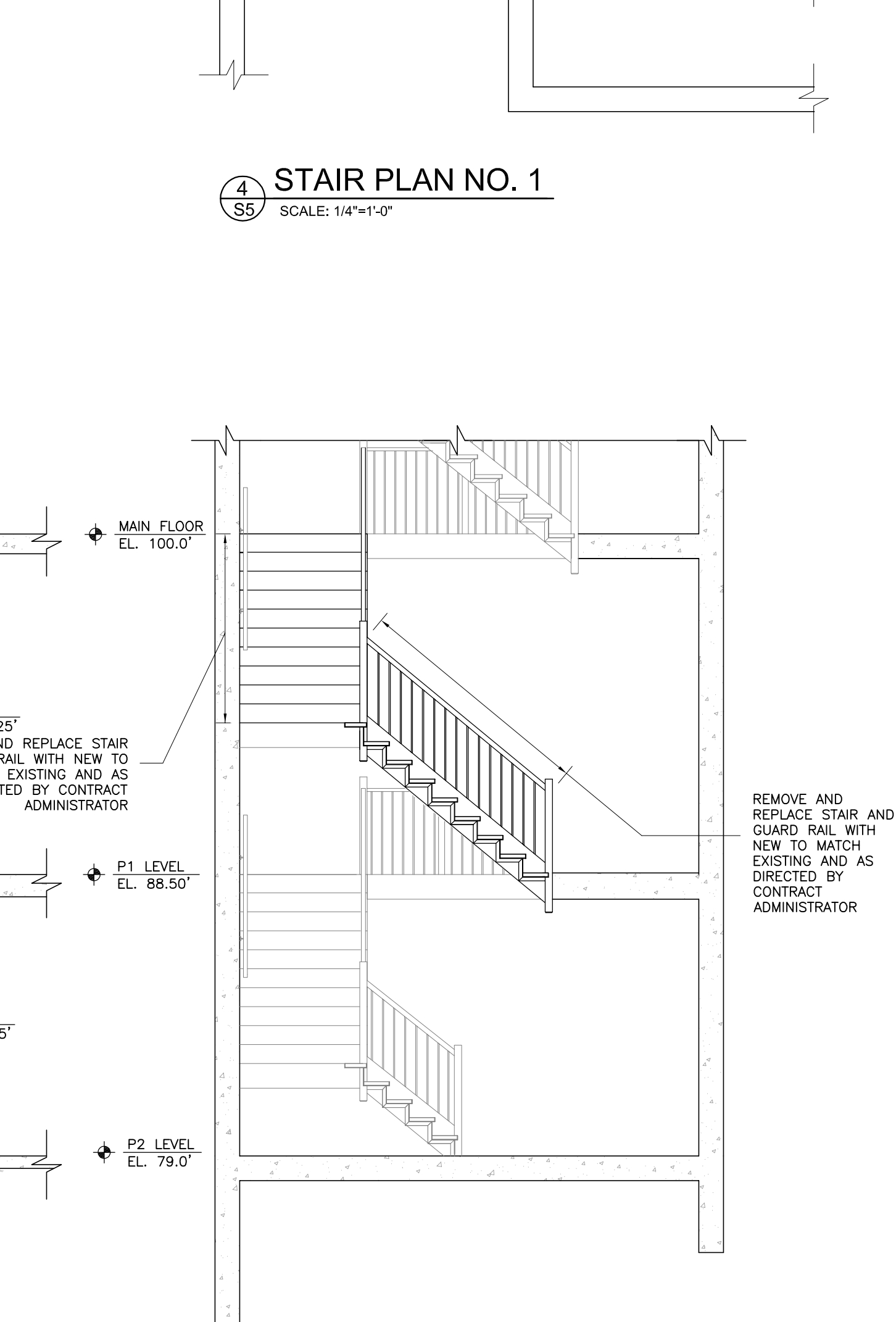
5 STAIR SECTION NO. 8 (OPTION A)
SCALE: 1/4"=1'-0"



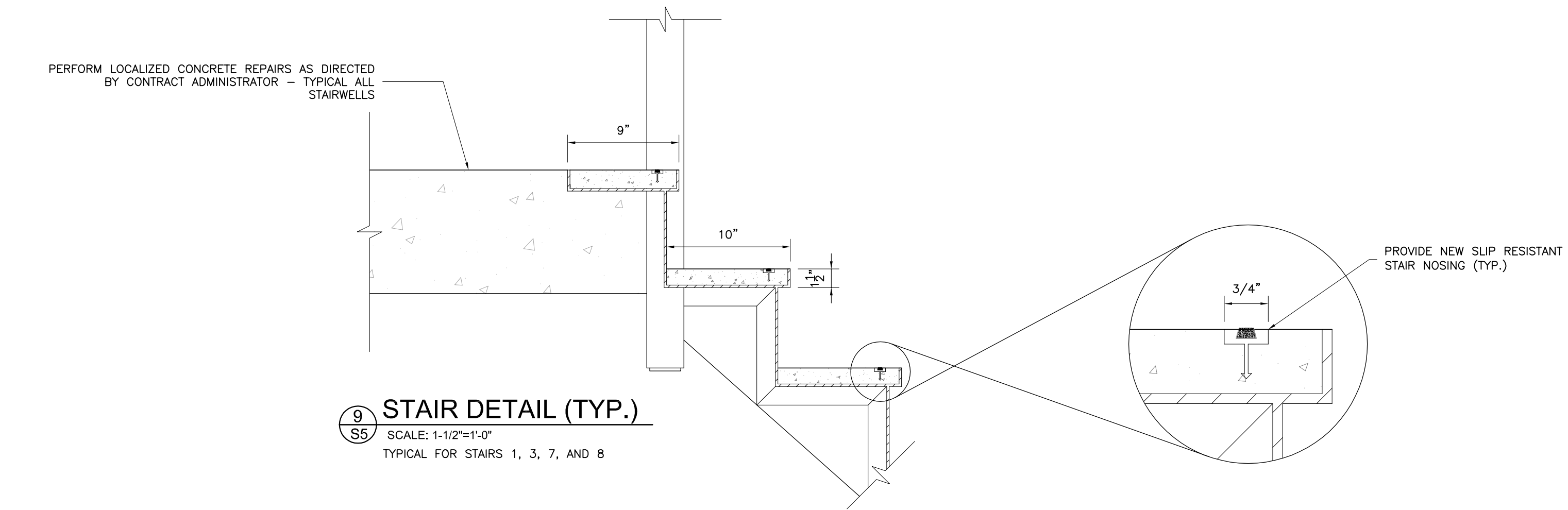
6 STAIR SECTION NO. 7 (OPTION A)
SCALE: 1/4"=1'-0"



7 STAIR SECTION NO. 3 (OPTION A)
SCALE: 1/4"=1'-0"



8 STAIR SECTION NO. 1 (OPTION A)
SCALE: 1/4"=1'-0"

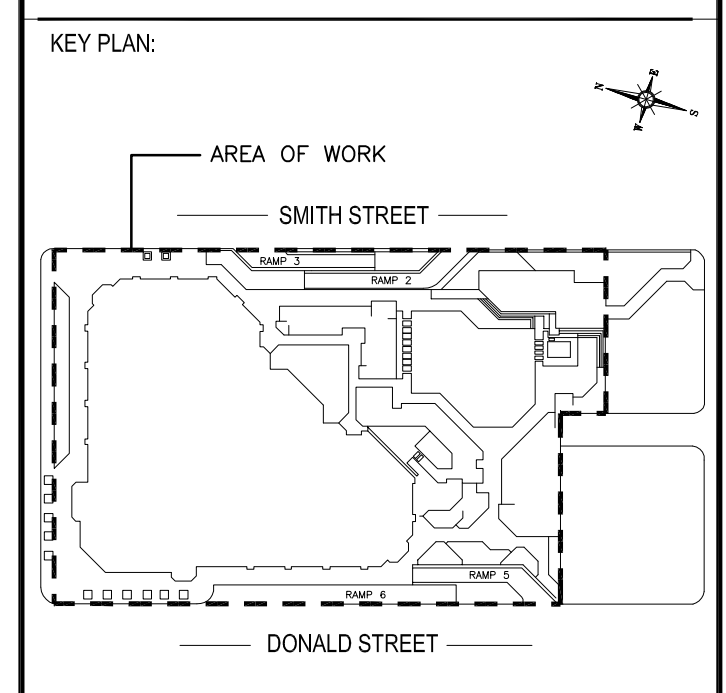


9 STAIR DETAIL (TYP.)
SCALE: 1-1/2"=1'-0"
TYPICAL FOR STAIRS 1, 3, 7, AND 8

NOTE: IN AREAS WHERE THE STAIRS ARE NOT TO BE REPLACED, CONTRACTOR TO PROVIDE NEW ADHESIVE SLIP RESISTANT STAIR NOSING. TYPICAL STAIRS 1, 3, 7, AND 8.

NO.	REVISION	DATE
1	ISSUED FOR COORDINATION	JULY 3, 2012
2	ISSUED FOR 66% REVIEW	SEPT 6, 2012
3	ISSUED FOR BID	NOV 7, 2012
4		
5		
6		
7		

NOTES:
CONTRACTOR SHALL CHECK AND VERIFY ALL DIMENSIONS AND BE RESPONSIBLE FOR REPORTING ALL DISCREPANCIES TO CITY AND/OR CONTRACT ADMINISTRATOR PRIOR TO BID CLOSING
LATEST APPROVED DRAWINGS ONLY TO BE USED FOR CONSTRUCTION.
PRINTS ARE NOT TO BE SCALED.



CONCENTRIC
ASSOCIATES INTERNATIONAL INCORPORATED

LONDON
Tel. 1-519-452-7700
Toll Free 1-866-919-4531

OTTAWA
Tel. 1-613-824-8900
Toll Free 1-866-919-4530

IQALUIT
Tel. 1-867-979-3300
Toll Free 1-866-919-4533

SASKATOON
Tel. 1-306-343-5500
Toll Free 1-866-919-8899

REGINA
Tel. 1-306-520-6100
Toll Free 1-866-919-1861

WINNIPEG
Tel. 1-204-783-1276
Toll Free 1-866-919-4531

YOU CHALLENGE US... TOGETHER WE SUCCEED
www.concentriceng.com

CLIENT NAME:
CITY OF WINNIPEG

PROJECT ADDRESS:
251 DONALD STREET
WINNIPEG, MANITOBA

PROJECT NAME:
REHAB OF MILLENNIUM LIBRARY PARKADE

DRAWING TITLE:
EXISTING STAIR PLANS AND SECTIONS

DESIGN: PSM
DRAWN: JAW
APPVD: PSM/ADM

SCALE: AS SHOWN
DATE: OCT/12
FILE No: 11-4145