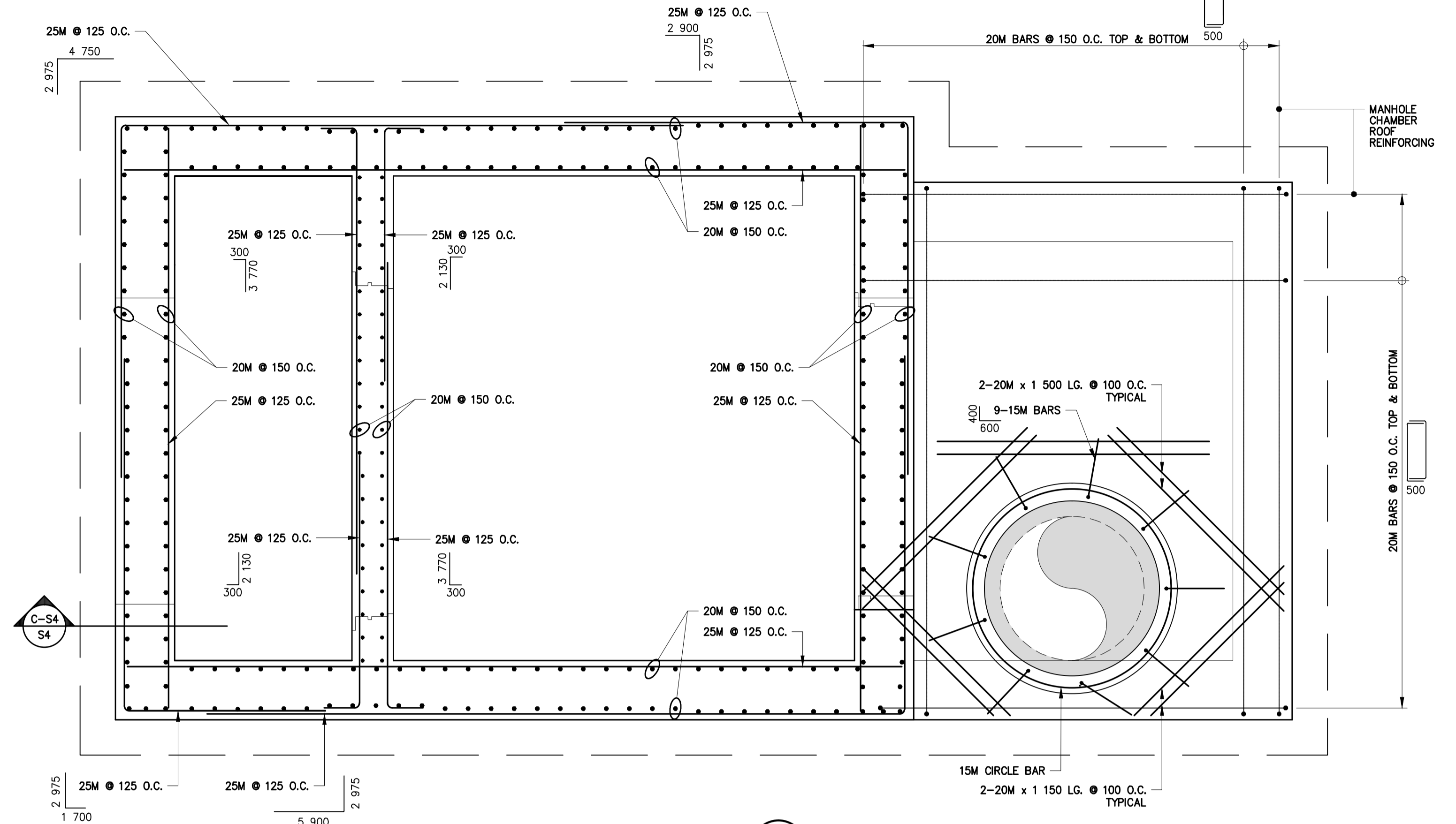
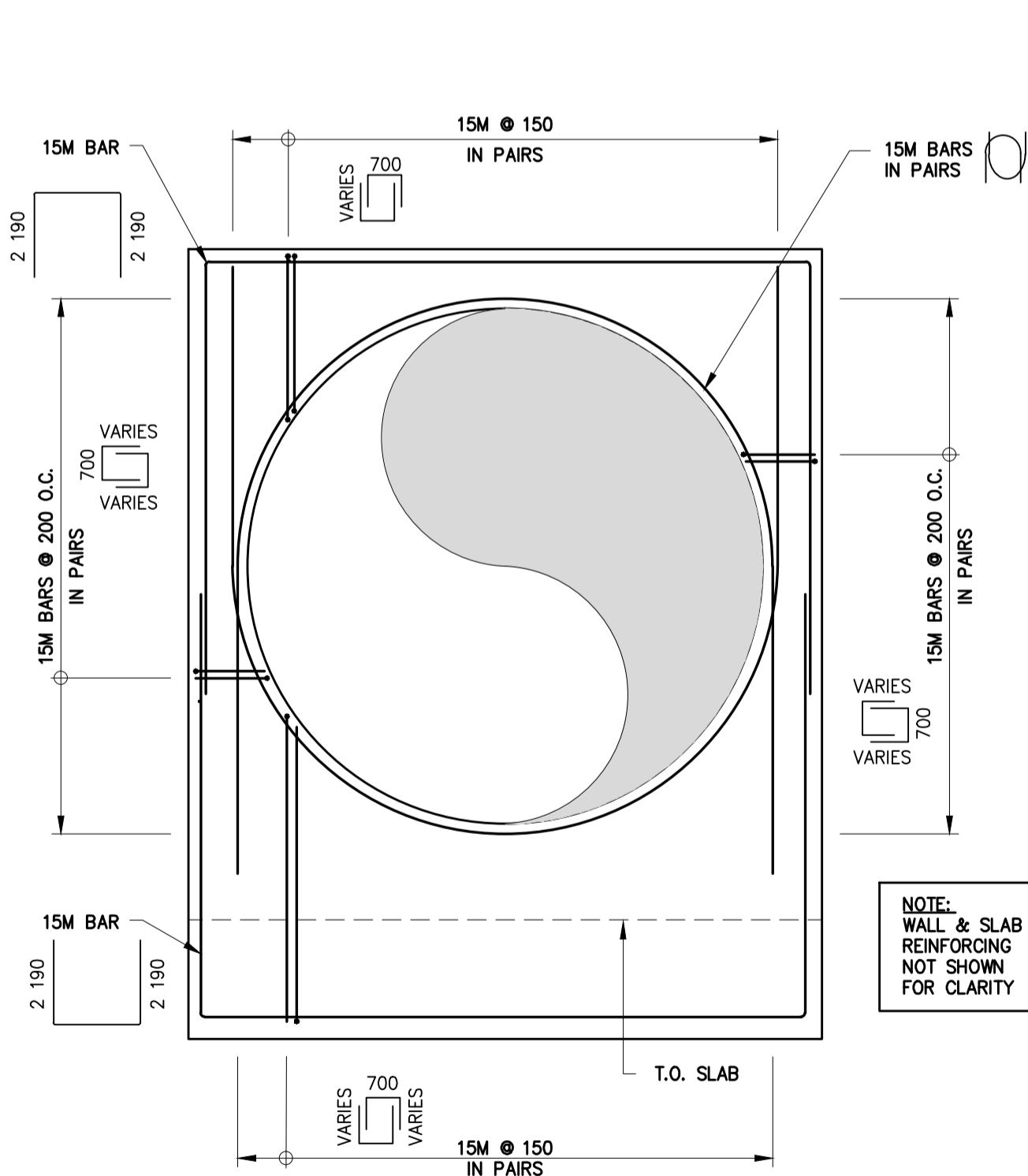


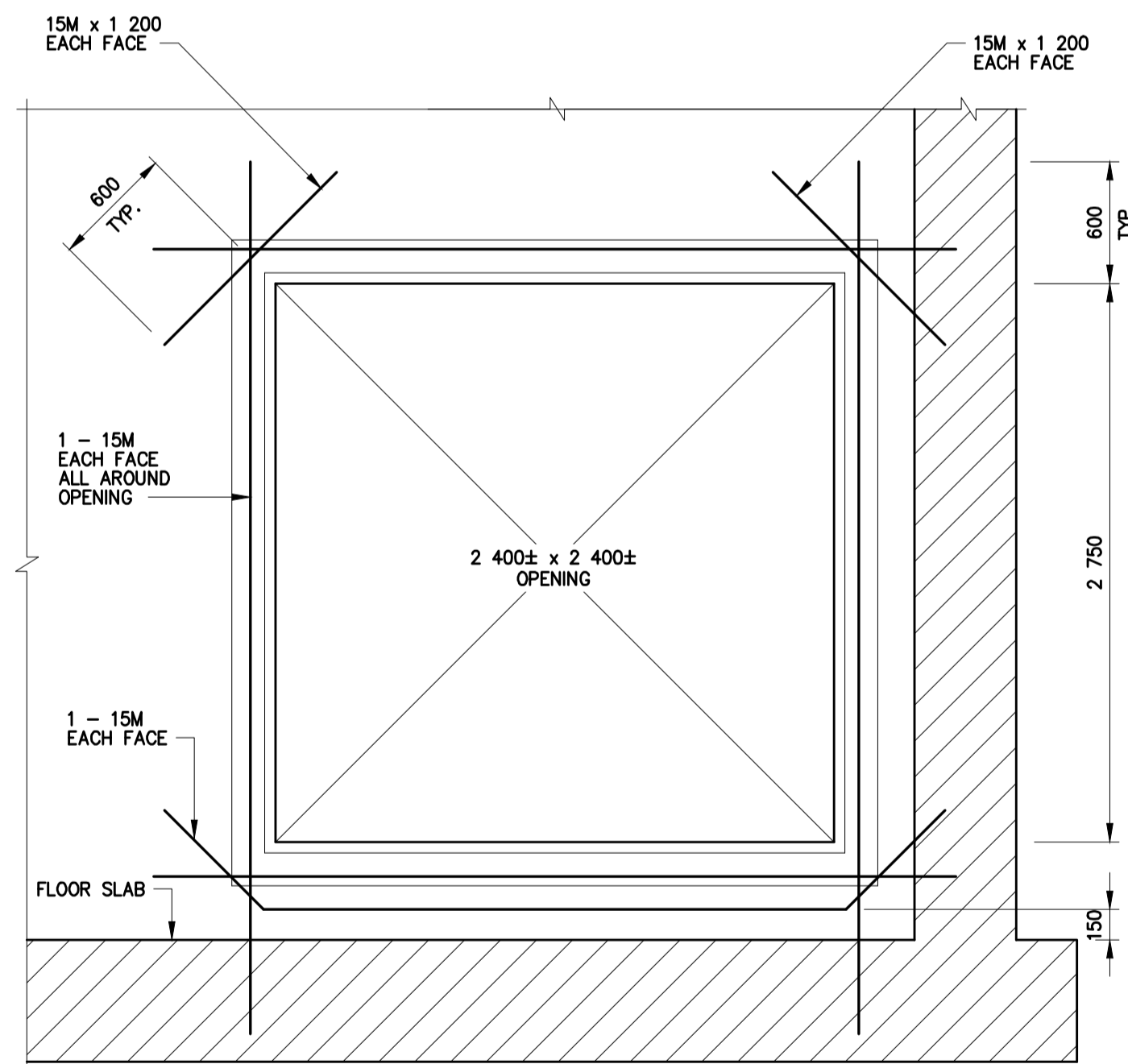
SECTION A-S4  
S3  
1:30



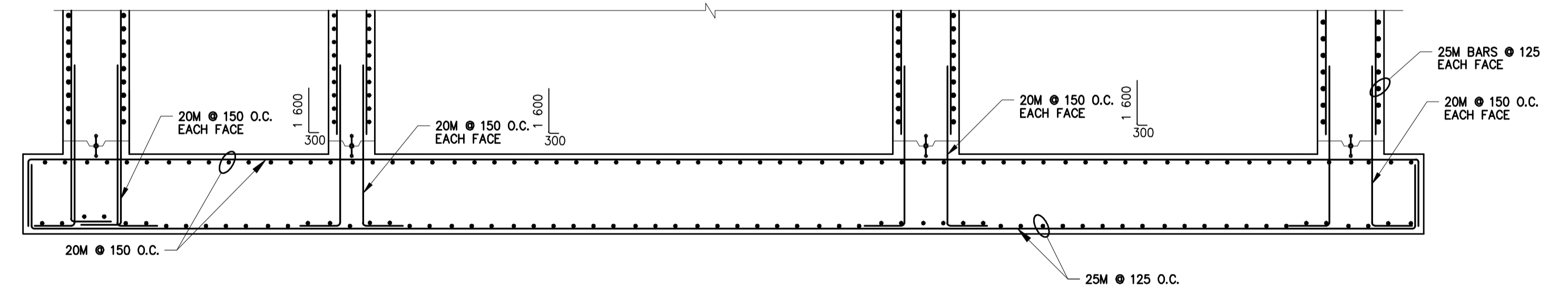
SECTION B-S4  
S3  
1:30



ELEVATION 1-S4  
S3  
1:30



ELEVATION 2-S4  
S3  
1:30



SECTION C-S4  
S4  
1:30



METRIC  
WHOLE NUMBERS INDICATE MILLIMETRES  
DECIMALIZED NUMBERS INDICATE METRES



THE CITY OF WINNIPEG  
WASTE AND WATER DEPARTMENT  
Winnipeg

OUTFALL GATE CHAMBER UPGRADES  
RIVERGATE  
LDS OUTFALL GATE CHAMBER  
REINFORCING DETAILS (SHEET 2 OF 2)

CONSULTANT DRAWING No.:  
5512082-S4  
SHEET 6 OF 8  
CITY DRAWING No.:  
LD-6034

DESIGNED BY: MM		CHECKED BY: EH	
DRAWN BY: KB		APPROVED BY: JPL	
HOR. SCALE: AS NOTED		RELEASED FOR CONSTRUCTION	
VERT. SCALE: AS NOTED			
0	ISSUED FOR TENDER	12.10.05	EH
No.	REVISIONS	DATE	BY
		12.10.05	
		DATE	12.10.05

ENGINEER'S SEAL  
PROVINCE OF MANITOBA  
OCT 5, 2010  
E. HO  
Member  
22317  
REGISTERED PROFESSIONAL ENGINEER

BID OPPORTUNITY: 745-2012  
PLOT DATE: 12.10.05

Printed: October 6, 2010, 11:43:30 AM | User: Sward, D. | Intersect: | Layout: 6 Reinforcing Details (Sheet 2 of 2)  
File: P:\5512082\5512082\_Rivergate LDS Outfall - S2-S5 Concrete, Reinf. Access Hatch 121001.dwg | Layer: 6 Reinforcing Details (Sheet 2 of 2)

NOTE:  
These design documents are prepared solely for the use by the party with whom the design professional has entered into a contract and there are no representations of any kind made by the design professional to any party with whom the design professional has not entered into a contract.