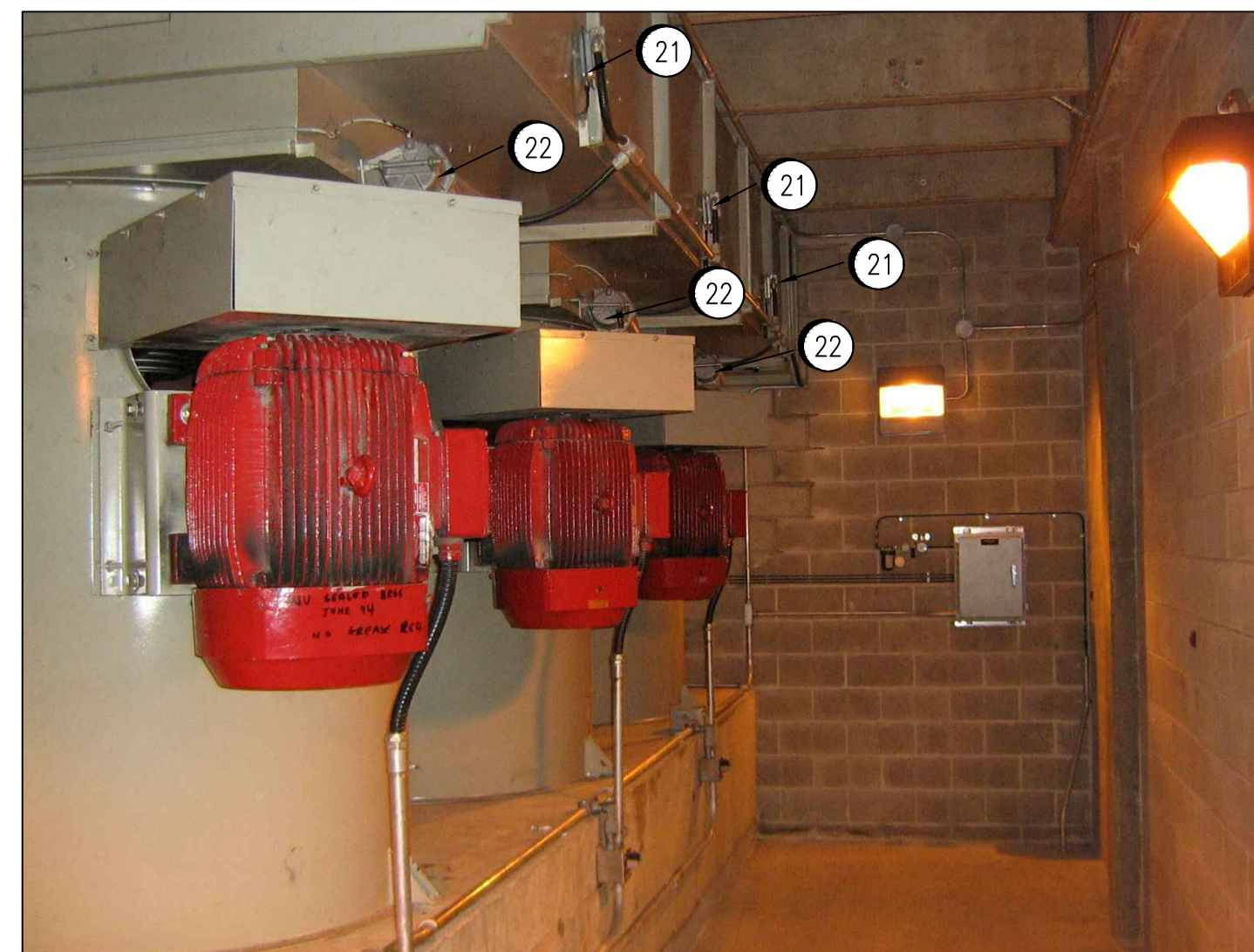


PRIMARY CLARIFIER 1 & 2 - EXHAUST FAN ROOM



1 DETAIL
SCALE NTS

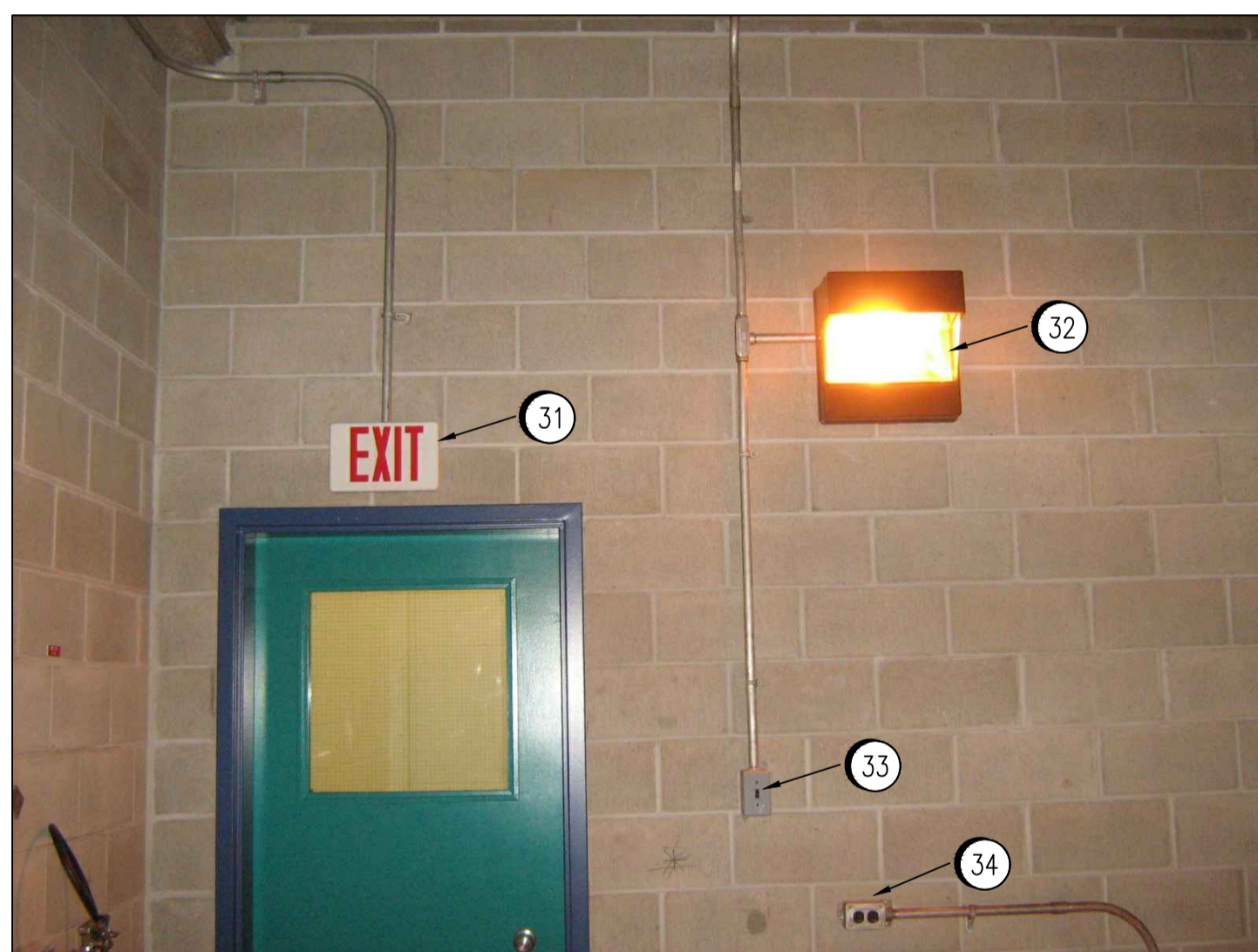
11 REPLACE EXISTING LOCK-OFF-STOP STATIONS AND BACKBOXES.



2 DETAIL
SCALE NTS

21 REPLACE EXISTING DIFFERENTIAL PRESSURE SWITCHES AND IMPULSE LINES. REFER TO DETAIL 4 FOR TYPICAL CLOSEUP. SEE DRAWINGS SEP-1187, SEP-1189, AND SEP-1191 FOR WIRING DETAILS.

22 REPLACE EXISTING LIMIT SWITCHES. INSTALL EYS SEAL FOR NEW LIMIT SWITCHES. REFER TO DETAIL 4 FOR TYPICAL CLOSEUP. SEE DRAWINGS SEP-1187, SEP-1189, AND SEP-1191 FOR WIRING DETAILS.



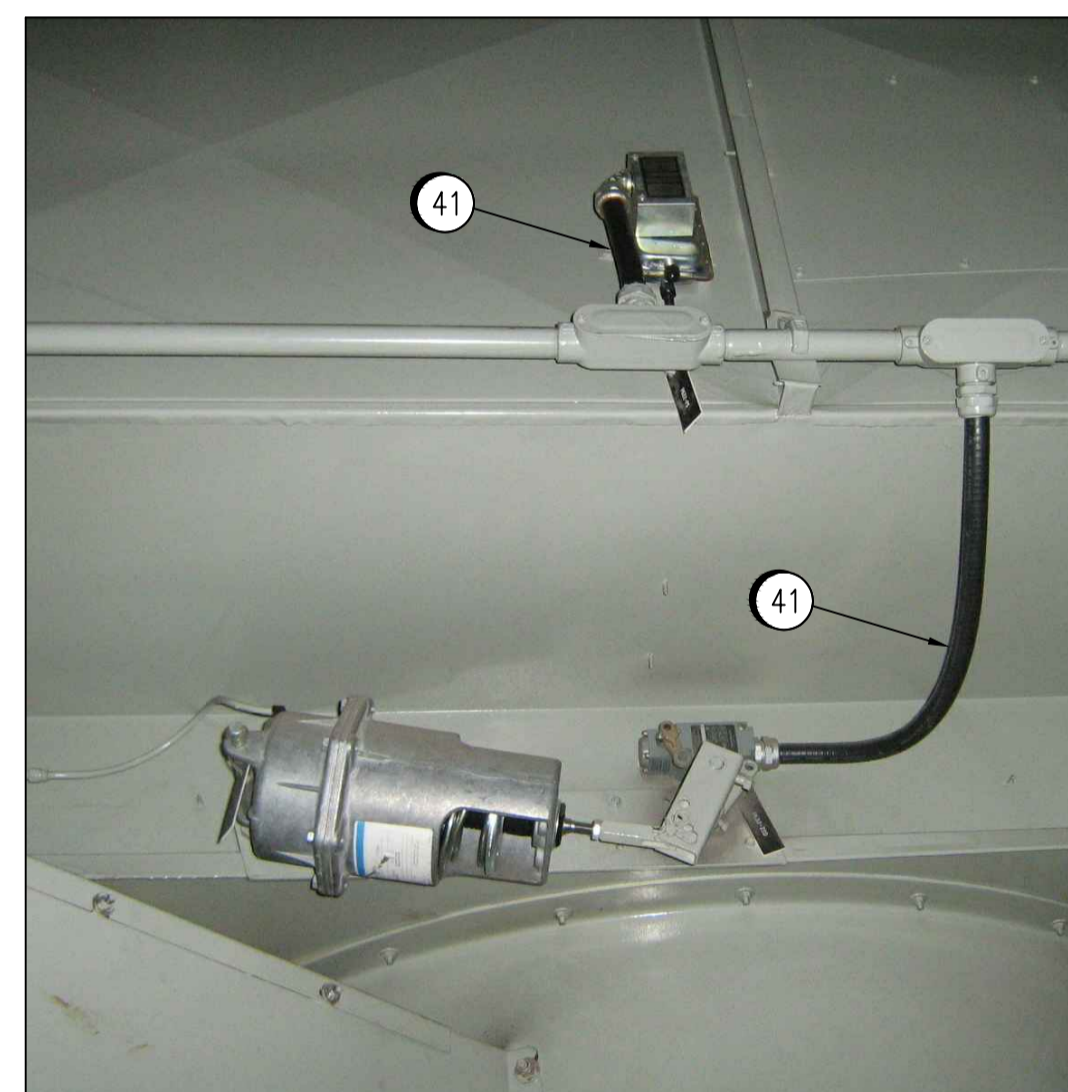
3 DETAIL
SCALE NTS

31 REPLACE EXISTING EXIT FIXTURE.

32 REPLACE EXISTING LUMINAIRE. TYPICAL FOR 3 EXISTING LUMINAIRES IN ROOM.

33 REPLACE EXISTING 15A, 347V LIGHT SWITCH AND BOX. INSTALL EYS SEAL IN EXISTING CONDUIT AND WIRING RUN.

34 REPLACE EXISTING 15A, 120V RECEPTACLE AND BOX.



4 DETAIL
SCALE NTS

41 REPLACE ALL FLEXIBLE CONDUIT WITH RIGID CONDUIT.

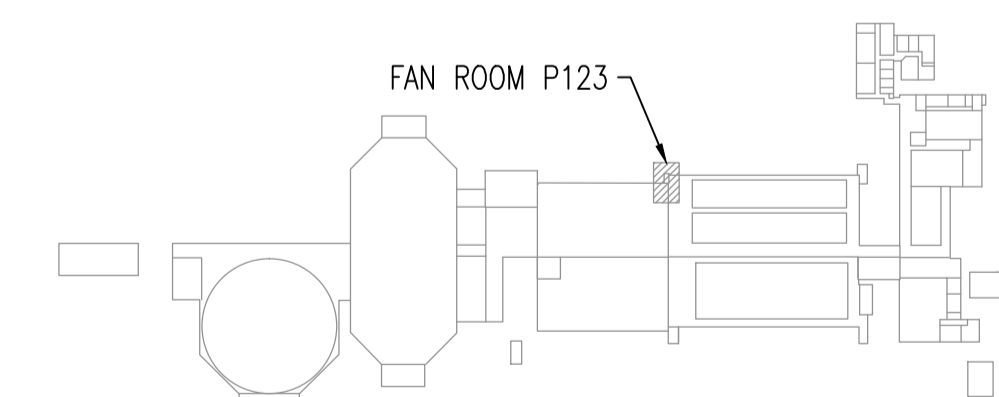
GENERAL NOTES:

- DRAWING AND PHOTOGRAPHS SHOW EXISTING MECHANICAL AND ELECTRICAL EQUIPMENT AND DEVICES. LOCATIONS INDICATED ARE APPROXIMATE.
- REUSE OF EXISTING CONDUIT AND WIRING FOR NEW DEVICES IS ACCEPTABLE UNLESS OTHERWISE NOTED.
- PLAN AND SCHEDULE WORK TO MINIMIZE OUTAGES. SCHEDULE ALL SHUTDOWNS WITH PLANT OPERATIONS. REFER TO SPECIFICATIONS FOR DETAILS.

CANADIAN ELECTRICAL CODE NOTES:

- AREA CLASSIFIED AS HAZARDOUS CLASS I, ZONE 2, GROUP IIA. REFER TO DRAWING 1-0102P-E0014.
- SUPPLY AND INSTALL NEW DEVICES AND CONDUIT TO MEET REQUIREMENTS FOR THE AREA CLASSIFICATION.
- INSTALLATION TO BE COMPLIANT WITH CEC REQUIREMENTS FOR THE AREA CLASSIFICATION, EXCEPT:
(a) CONDUIT SEALS ARE NOT REQUIRED ON EXISTING CONDUITS PASSING FROM CLASS I ZONE 2 AREAS TO UNCLASSIFIED AREAS, REF CEC 18-158(a).
- DO NOT INSTALL ANY NEW WIRING IN EXISTING CONDUITS. ALL NEW WIRING TO BE INSTALLED IN NEW CONDUITS TO MEET CEC REQUIREMENTS, INCLUDING SEALS WHEN PASSING FROM CLASSIFIED AREAS.

SPECIFIC NOTES	
1	INSTALL DUCT SEAL IN EXISTING CONDUIT AT THE FIRST CONDUIT BODY OR JUNCTION BOX WITHIN THE HAZARDOUS AREA (ESTIMATED NUMBER OF LOCATIONS: 4).
2	EXISTING PANEL PCP-1 CONTAINS ONLY SOLENOID VALVES AND IS ACCEPTABLE FOR THE NEW ELECTRICAL CLASSIFICATION.

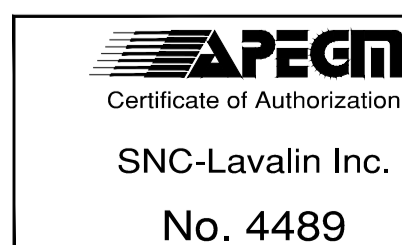


KEY PLAN
N.T.S.

GENERAL NOTES:

- DRAWING SUPERCEDES PART OF SEP-277 AND SEP-284.

1-0102A-E0010	TYPICAL INSTALLATION DETAILS.
1-0102A-E0009	DEVICE AND LUMINAIRE SCHEDULE.
1-0102P-E0014	ELECTRICAL CLASSIFICATION PLAN
DRAWING NUMBER	REFERENCE DRAWINGS



NO.	REVISIONS	DATE	DESIGN	CHECK
00	ISSUED FOR TENDER, BID OPP. 7-2012	2012/02/08	TMC	CJR

		SNC-LAVALIN INC. 148 Nature Park Way Winnipeg, MB, Canada R3P 0X7 204-786-8080	
DESIGNED BY:	T. CHURCH	CHECKED BY:	C. REIMER
DRAWN BY:	S. FUNK	APPROVED BY:	C. REIMER
SCALE:	1:30	RELEASED FOR CONSTRUCTION BY:	N. HARRINGTON
DATE:	2011/07/06	DATE:	2012/02/15
CONSULTANT NO.:	112577-0113-47DD-0400		

ENGINEER'S SEAL
ORIGINAL DRAWING SEALED BY:
T. M. CHURCH
SNC-LAVALIN
MEMBER #32682
2012/02/15
REV. 00

		THE CITY OF WINNIPEG WATER AND WASTE DEPARTMENT	
SOUTH END WATER POLLUTION CONTROL CENTRE ELECTRICAL CLASSIFICATION UPGRADES PLAN LAYOUT PRIMARY CLARIFIERS 1 & 2 EXHAUST FAN ROOM - P123			
CITY DRAWING NUMBER	SHEET	REV.	SIZE
1-0102P-E0015	001	00	A1