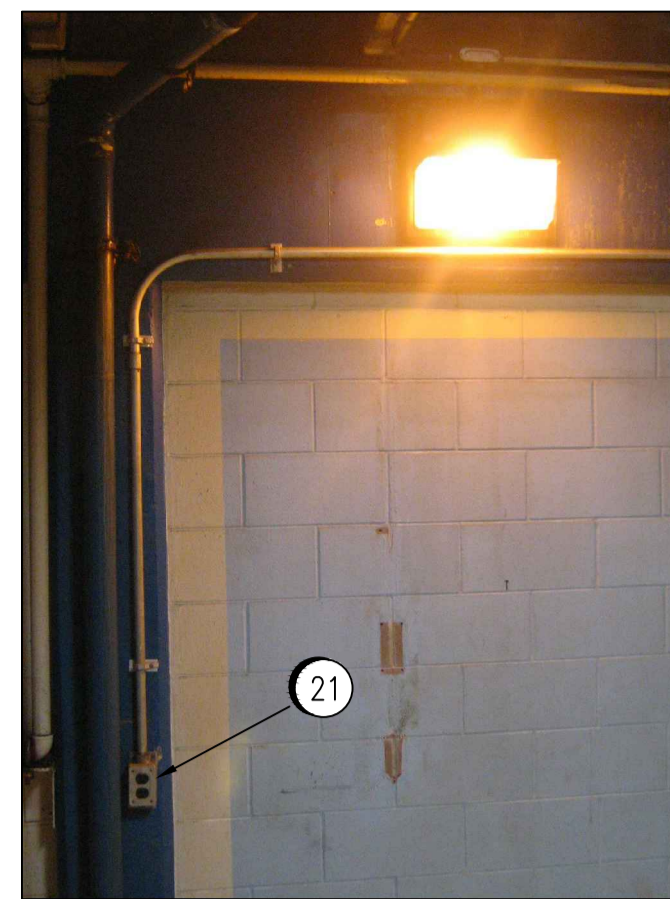


1 DETAIL  
SCALE NTS

11 REPLACE EXISTING ROTORK ELECTRIC VALVE ACTUATOR (G226-SG). SEE DRAWING SEP-2048 FOR WIRING DETAILS. G225-SG HAS ALREADY BEEN REPLACED.



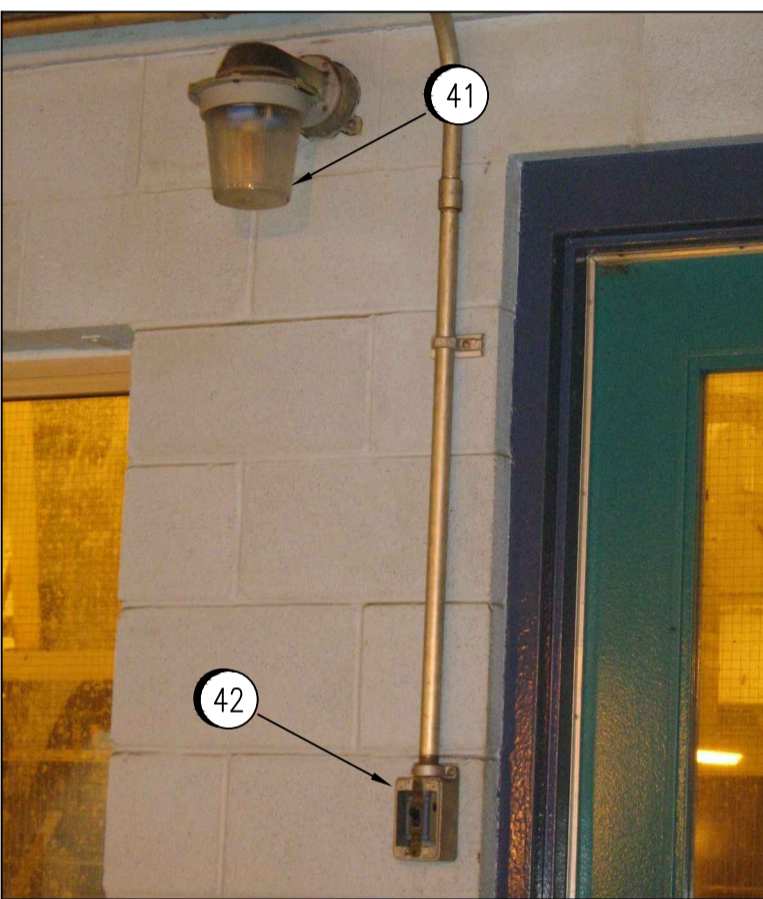
2 DETAIL  
SCALE NTS

21 REPLACE EXISTING 15A, 120V RECEPTACLE AND BOX. TYPICAL FOR TWO 15A, 120V RECEPTACLES.



3 DETAIL  
SCALE NTS

31 REPLACE EXISTING 60A 3-POLE WELDING RECEPTACLE AND BOX.  
32 REMOVE EXISTING LUMINAIRE AND CONDUIT. TYPICAL FOR FIVE EXISTING LUMINAIRES IN ROOM. INSTALL FLUORESCENT FIXTURES IN ROOM AS SHOWN. USE UNISTRUT SUPPORTS TO MOUNT LUMINAIRES. PENDANT MOUNTING IS NOT ACCEPTABLE.



4 DETAIL  
SCALE NTS

41 EXISTING STROBE G504-AAH REPLACED UNDER A DIFFERENT PROJECT.  
42 REPLACE EXISTING 15A, 347V LIGHT SWITCH AND BOX. INSTALL EYS SEAL IN EXISTING CONDUIT AND WIRING RUN.



5 DETAIL  
SCALE NTS

51 REMOVE EXISTING LUMINAIRE AND CONDUIT. TYPICAL FOR TWO EXISTING LUMINAIRES. INSTALL FLUORESCENT FIXTURES IN ROOM AS SHOWN. USE UNISTRUT SUPPORTS TO MOUNT LUMINAIRES. PENDANT MOUNTING IS NOT ACCEPTABLE.

SPECIFIC NOTES	
1	GAS DETECTORS REPLACED UNDER A DIFFERENT PROJECT.
2	INSTALL DUCT SEAL IN EXISTING CONDUIT AT THE FIRST CONDUIT BODY OR JUNCTION BOX WITHIN THE HAZARDOUS AREA (ESTIMATED NUMBER OF LOCATIONS: 11).

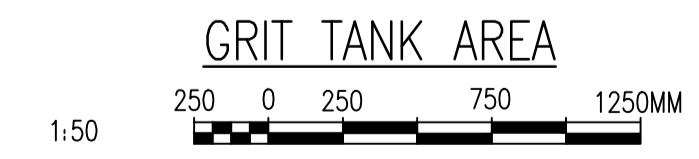
**CANADIAN ELECTRICAL CODE NOTES:**

- AREA CLASSIFIED AS HAZARDOUS CLASS 1, ZONE 2, GROUP IIA. REFER TO DRAWING 1-0102G-E0014.
- SUPPLY AND INSTALL NEW DEVICES AND CONDUIT TO MEET REQUIREMENTS FOR THE AREA CLASSIFICATION.
- INSTALLATION TO BE COMPLIANT WITH CEC REQUIREMENTS FOR THE AREA CLASSIFICATION, EXCEPT:  
(a) CONDUIT SEALS ARE NOT REQUIRED ON EXISTING CONDUITS PASSING FROM CLASS 1 ZONE 2 AREAS TO UNCLASSIFIED AREAS, REF CEC 18-158(a).
- DO NOT INSTALL ANY NEW WIRING IN EXISTING CONDUITS. ALL NEW WIRING TO BE INSTALLED IN NEW CONDUITS TO MEET CEC REQUIREMENTS, INCLUDING SEALS WHEN PASSING FROM CLASSIFIED AREAS.

**GENERAL NOTES:**

- DRAWING AND PHOTOGRAPHS SHOW EXISTING MECHANICAL AND ELECTRICAL EQUIPMENT AND DEVICES. LOCATIONS INDICATED ARE APPROXIMATE.
- REUSE OF EXISTING CONDUIT AND WIRING FOR NEW DEVICES IS ACCEPTABLE UNLESS OTHERWISE NOTED.
- PLAN AND SCHEDULE WORK TO MINIMIZE OUTAGES. SCHEDULE ALL SHUTDOWNS WITH PLANT OPERATIONS. REFER TO SPECIFICATIONS FOR DETAILS.

1-0102A-E0010	TYPICAL INSTALLATION DETAILS.
1-0102A-E0009	DEVICE AND LUMINARIE SCHEDULE.
1-0102E-E0014	ELECTRICAL CLASSIFICATION PLAN
DRAWING NUMBER	REFERENCE DRAWINGS



- NOTES:**
- THIS DRAWING SUPERCEDES PART OF SEP-827 AND SEP-838.
  - EXHAUST FAN G690-EF HAS BACKDRAFT DAMPER.



NO.	REVISIONS	DATE	DESIGN	CHECK
00	ISSUED FOR TENDER, BID OPP. 7-2012	2012/02/08	TMC	CJR

DESIGNED BY:	T. CHURCH
CHECKED BY:	C. REIMER
DRAWN BY:	S. FUNK
APPROVED BY:	C. REIMER
SCALE:	1:50
DATE:	2011/07/06
RELEASED FOR CONSTRUCTION BY:	N. HARRINGTON
DATE:	2012/02/15
CONSULTANT NO.:	112577-0113-47DD-0207

ENGINEER'S SEAL  
ORIGINAL DRAWING SEALED BY:  
T. M. CHURCH  
SNC-Lavalin  
MEMBER #32682  
2012/02/15  
REV. 00

**THE CITY OF WINNIPEG**  
WATER AND WASTE DEPARTMENT

SOUTH END WATER POLLUTION CONTROL CENTRE  
ELECTRICAL CLASSIFICATION UPGRADE  
PLAN LAYOUT  
PUMP & SCREEN BUILDING - GRIT TANK ROOM

CITY DRAWING NUMBER: 1-0102G-E0024  
SHEET: 001  
REV: 00  
SIZE: A1