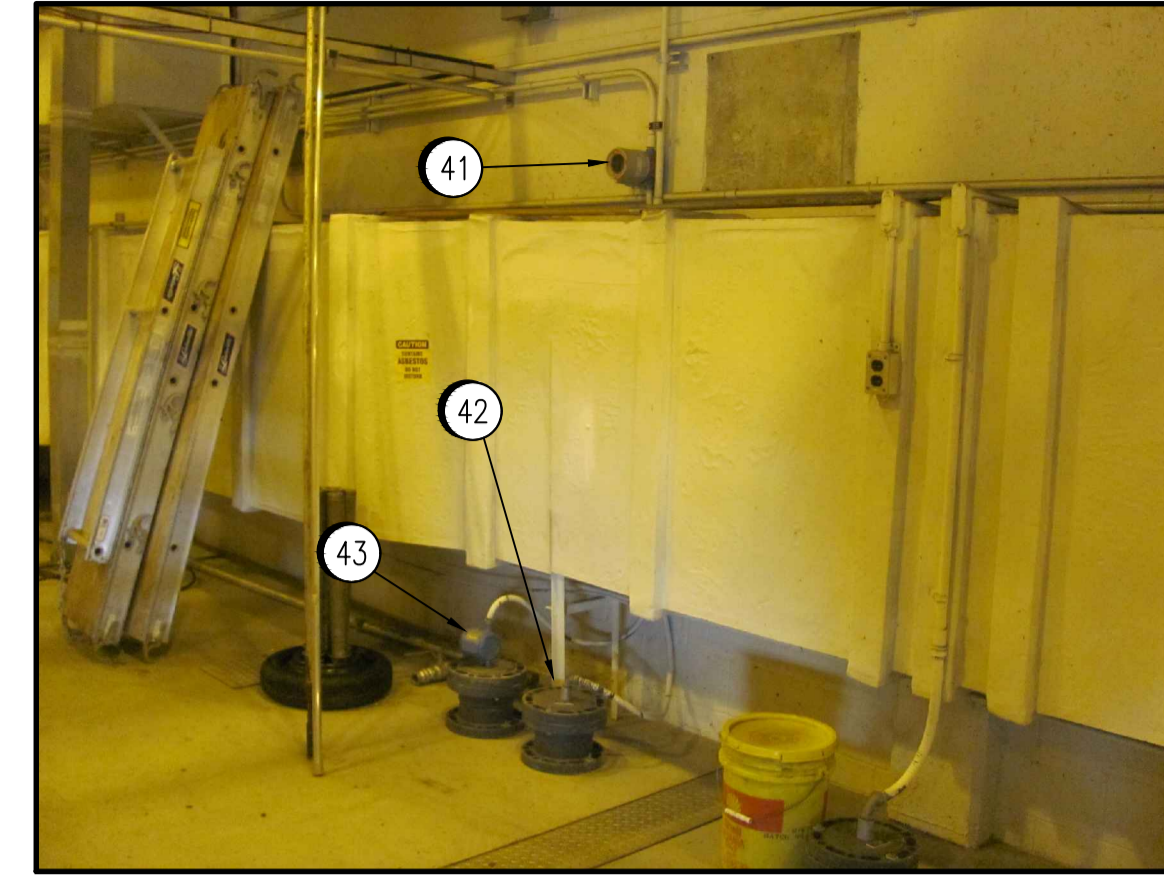


21
DETAIL
SCALE NTS



31
DETAIL
SCALE NTS

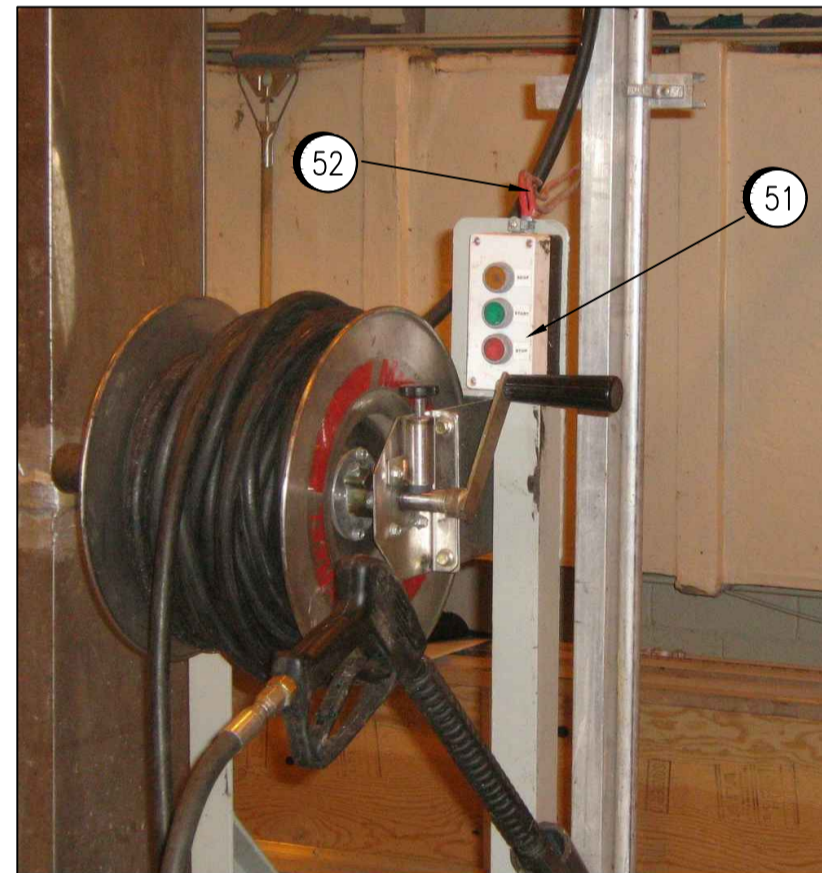


41
42
43
DETAIL
SCALE NTS

21 DISCONNECT ALL WIRING TO G207-SG AND G215-SG. DISCONNECT POWER WIRING FROM BREAKERS IN MCC-3G AND MCC-4G AND LABEL BREAKERS AS SPARE. DISCONNECT POWER WIRING FROM MANUAL STARTER, TAPE ENDS, COIL BACK AND LEAVE IN STARTER ENCLOSURE. REMOVE WIRING FROM ACTUATOR ENCLOSURE TO MANUAL STARTER. SEE DRAWINGS SEP-2037 AND SEP-2045 FOR WIRING DETAILS. ATTACH WARNING LAMACOID TO ACTUATORS STATING "ACTUATOR IS NOT ELECTRICALLY CLASSIFIED FOR AREA. DO NOT CONNECT POWER TO ACTUATOR."

31 REPLACE EXISTING SPEAKER AND INSTALL CONDUIT WITH HAZARDOUS RATED SEAL AT HAZARDOUS BOUNDARY. INSTALL CABLE FULLY IN CONDUIT.

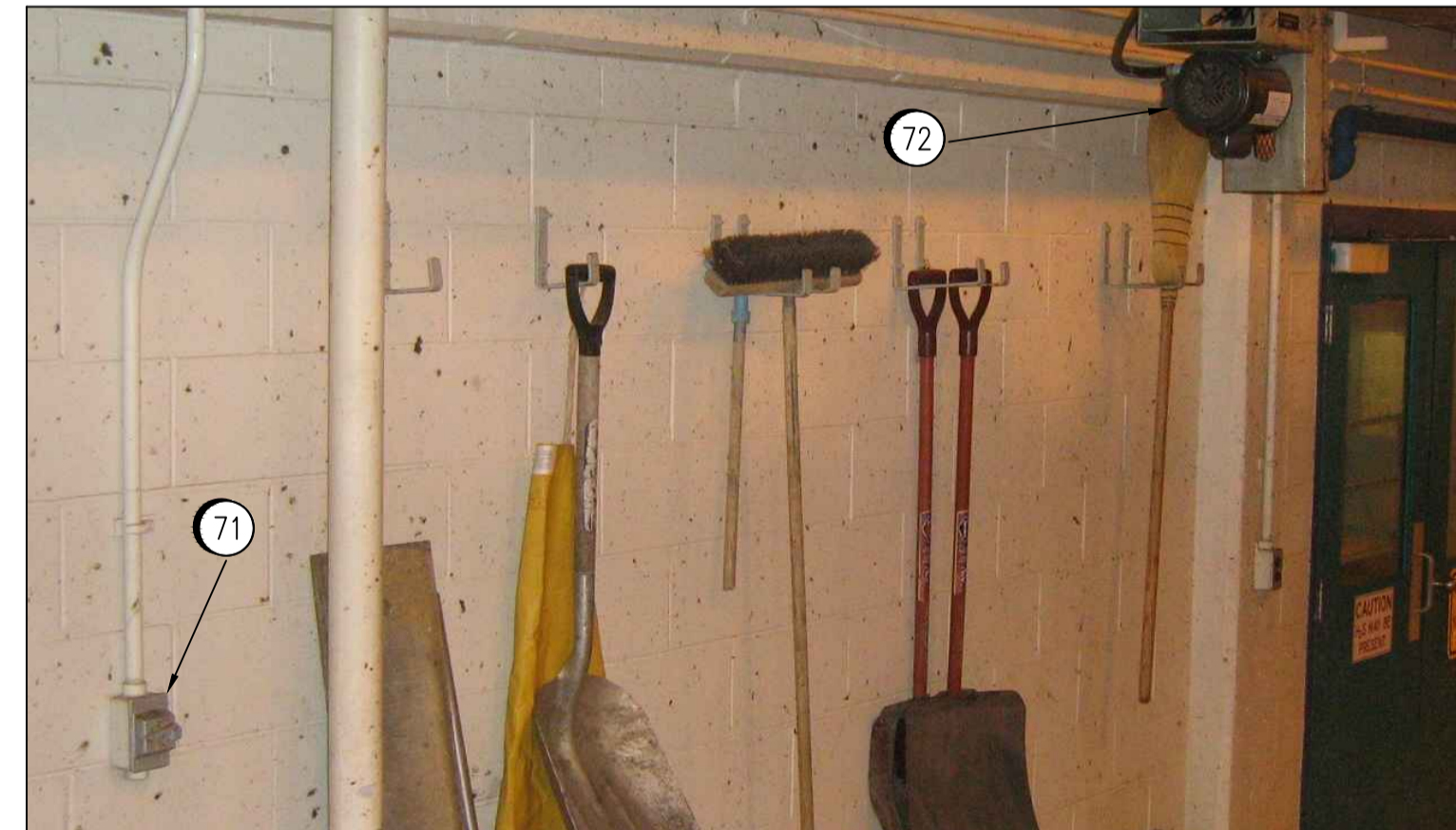
41 REMOVE EMPTY EXPLOSION PROOF HOUSING AND SEAL CONDUIT.
42 ADD I.S. BARRIER TO EXISTING LEVEL SWITCH G202-LSH WIRING. SEE 1-0102G-A0043 FOR WIRING DETAILS. REPLACE LEVEL SWITCH AND WIRING. REMOVE ALL UNUSED CONDUIT.
43 INSTALL HAZARDOUS RATED CONDUIT SEAL IN CONDUIT FOR TEMPERATURE TRANSMITTER (G220-TT). WHERE IT EXITS THE HAZARDOUS AREA. SEE SEP-2046 FOR WIRING DETAILS.



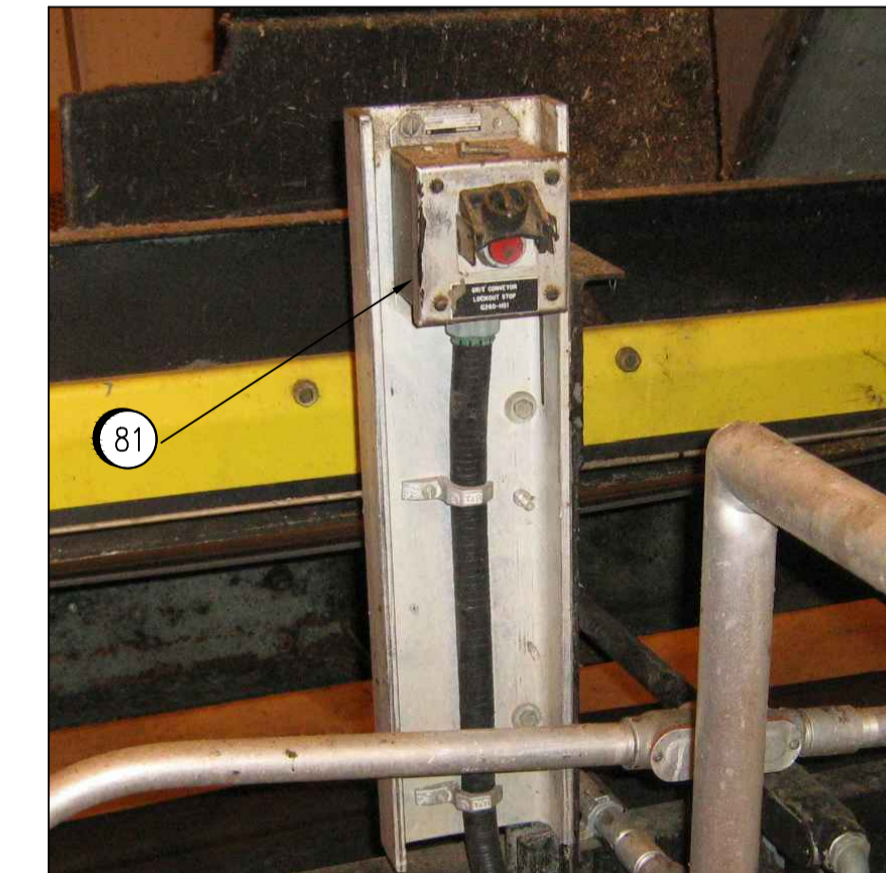
51
52
DETAIL
SCALE NTS



61
DETAIL
SCALE NTS



71
72
DETAIL
SCALE NTS



81
DETAIL
SCALE NTS

51 REPLACE SOAP/START/STOP PUSHBUTTON STATION.
52 PROVIDE 27mm CONDUIT FROM STATION TO POWERWASH UNIT ALONG ROUTE AS INDICATED ON FLOOR PLAN. INSTALL 16 AWG CIC WITH SAME NUMBER OF CONDUCTORS AS THE EXISTING TWO CABLES IN THE NEW CONDUIT. TERMINATE THE CONTROL CABLING AT THE NEW CONTROL STATION AND AT POWERWASH UNIT TO PROVIDE EQUIVALENT FUNCTIONALITY OF THE EXISTING SYSTEM.

61 REMOVE EXISTING MANUAL MOTOR STARTER (G260A-HS) AND FEED CONVEYOR BRUSH MOTOR FROM NEW STARTER IN MCC-3G. SEE 1-0102G-E0035 FOR WIRING DETAILS.

71 REPLACE EXISTING MANUAL MOTOR STARTER
72 REPLACE EXISTING 120V MOTOR AND FAN. INSTALL NEW SUPPORTS TO MOUNT FAN AND MOTOR.

81 REPLACE EXISTING LOCK-OFF-STOP STATION AND BACK BOX (G260-HS1). SEE DRAWING SEP-2070 AND 1-0102G-A0035 FOR WIRING DETAILS. REPLACE FLEXIBLE CONDUIT WITH RIGID CONDUIT.

1-0102A-E0010	TYPICAL INSTALLATION DETAILS
1-0102A-E0009	DEVICE AND LUMINARIE SCHEDULE
1-0102G-E0014	ELECTRICAL CLASSIFICATION PLAN
DRAWING NUMBER	REFERENCE DRAWINGS

APECM
Certificate of Authorization
SNC-Lavalin Inc.
No. 4489

00	ISSUED FOR TENDER, BID OPP: 7-2012	2012/02/08	TMC	CJR
NO.	REVISIONS	DATE	DESIGN	CHECK

SNC-LAVALIN INC.
148 Nature Park Way
Winnipeg, MB, Canada R3P 0X7
204-786-8080

DESIGNED BY: T. CHURCH
CHECKED BY: C. REIMER
DRAWN BY: S. FUNK
APPROVED BY: C. REIMER
SCALE: NTS
RELEASED FOR CONSTRUCTION BY: N. HARRINGTON
DATE: 2011/07/06
DATE: 2012/02/15
CONSULTANT NO.: 112577-0113-47DD-0204

ENGINEER'S SEAL
ORIGINAL DRAWING
SEALED BY:
T. M. CHURCH
SNC-LAVALIN
MEMBER #32682
2012/02/15
REV. 00

THE CITY OF WINNIPEG
WATER AND WASTE DEPARTMENT

SOUTH END WATER POLLUTION CONTROL CENTRE
ELECTRICAL CLASSIFICATION UPGRADES
PLAN LAYOUT
PUMP & SCREEN BUILDING - SCREEN ROOM G127
EAST AREA

CITY DRAWING NUMBER: 1-0102G-E0021
SHEET: 002
REV.: 00
SIZE: A1