

- ### SPECIFIC NOTES
- 1 PROVIDE ISB-G1 LOCATED IN MOTOR ROOM AT HEIGHT OF 1500mm ABOVE FINISHED FLOOR. PROVIDE NEW CONDUIT AND WIRING TO CONNECT TO GRIT CONTROL ROOM AND LEVEL SWITCHES.
 - 2 ADD SIGN NEAR LADDER WITH WARNING "WET WELL IS CONSIDERED A CONFINED SPACE. TAKE APPROPRIATE PRECAUTIONS WHEN ENTERING THE SPACE."
 - 3 PROVIDE HAZARDOUS SEALING FITTING WHERE EXISTING CONDUIT ENTERS WET WELL. PULL BACK WIRING AS REQUIRED. WIRING MAY BE REUSED IF IN GOOD CONDITION.
 - 4 INSTALL SEALING COMPOUND IN EXISTING EYS FITTINGS IF REUSED.
 - 5 PROVIDE ADDITIONAL STANCHION MOUNT FIXTURES ON SAME SWITCH AS EXISTING STANCHION MOUNT FIXTURES. INSTALL CONDUIT OVER WALKWAY ON CEILING. SEE DETAIL ON 1-0102A-E0011
 - 6 REPLACE EXISTING STANCHION MOUNT LUMINAIRES WITH NEW ADEQUATELY RATED LUMINAIRES. RE-WIRE FROM NON-ESSENTIAL CIRCUIT.
 - 7 REMOVE EXISTING LIGHT SWITCH AND REPLACE WITH SWITCH IN WET WELL FOYER. INSTALL JUNCTION BOX, NEW CONDUIT AND WIRING AS REQUIRED.
 - 8 EXISTING LUMINAIRES ARE ACCEPTABLE FOR CLASS 1, ZONE 2 LOCATIONS. REPLACE ALL FLEXIBLE CONDUIT WITH RIGID CONDUIT. RE-WIRE AS SHOWN.
 - 9 PROVIDE NEW LUMINAIRE POWERED FROM ESSENTIAL CIRCUIT. USE UNISTRUT SUPPORTS TO MOUNT LUMINAIRE. PENDANT MOUNTING IS NOT ACCEPTABLE.
 - 10 INSTALL CABLE RAMP OVER CONDUITS MOUNTED ON THE FLOOR.
 - 11 INSTALL NEW RECEPTACLE IN WET WELL.

GENERAL NOTES:

1. DRAWING AND PHOTOGRAPHS SHOW EXISTING MECHANICAL AND ELECTRICAL EQUIPMENT AND DEVICES. LOCATIONS INDICATED ARE APPROXIMATE.
2. REUSE OF EXISTING CONDUIT AND WIRING FOR NEW DEVICES IS ACCEPTABLE UNLESS OTHERWISE NOTED.
3. PLAN AND SCHEDULE WORK TO MINIMIZE OUTAGES SCHEDULE ALL SHUTDOWNS WITH PLANT OPERATIONS. REFER TO SPECIFICATIONS FOR DETAILS.

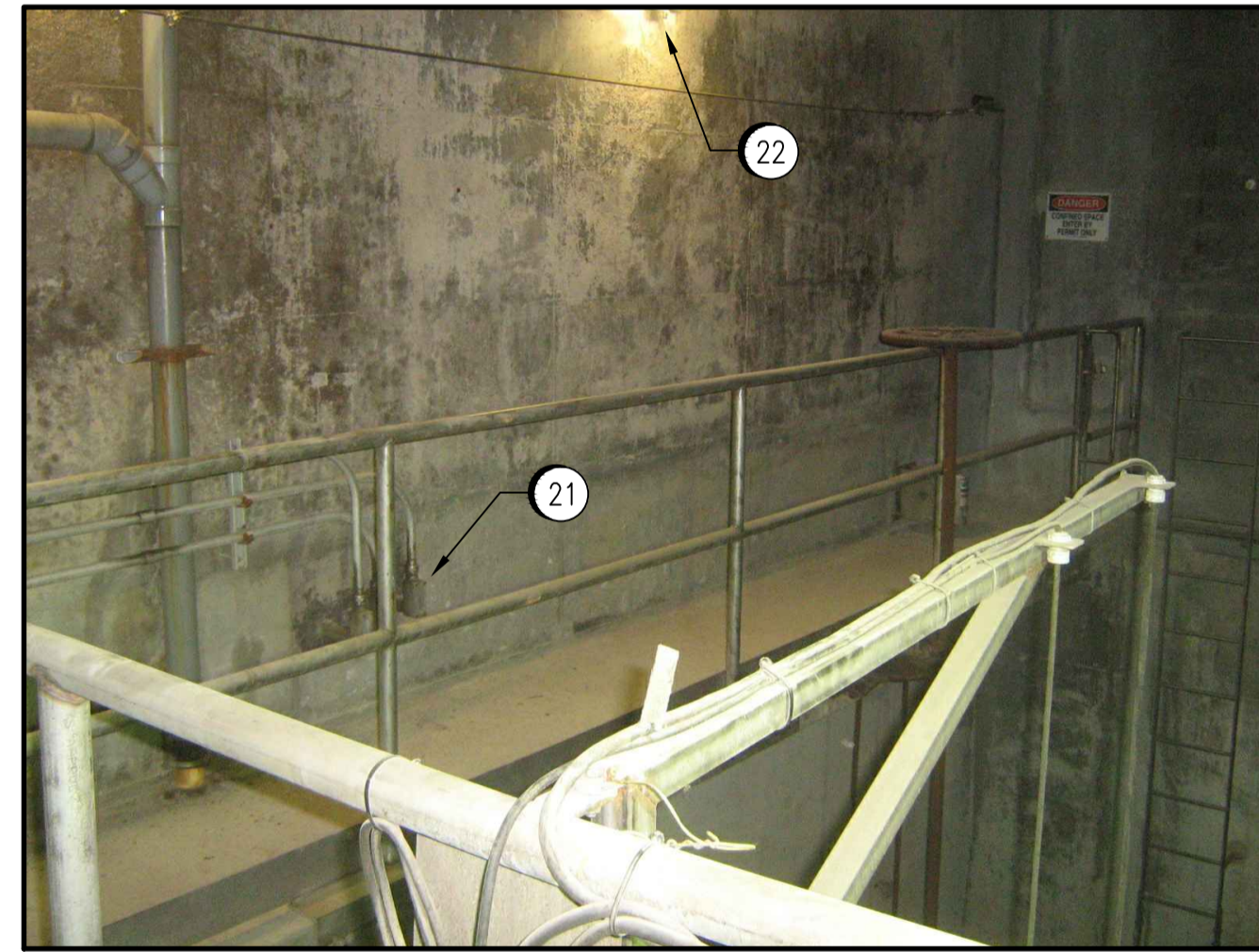
CANADIAN ELECTRICAL CODE NOTES:

1. AREA CLASSIFIED AS HAZARDOUS CLASS 1, ZONE 2, GROUP IIA. REFER TO DRAWING 1-0102G-E0015.
2. SUPPLY AND INSTALL NEW DEVICES AND CONDUIT TO MEET REQUIREMENTS FOR THE AREA CLASSIFICATION.
3. ALL CONDUITS EXITING THE HAZARDOUS AREA MUST HAVE HAZARDOUS RATED SEALS.



11 DETAIL
SCALE: NTS

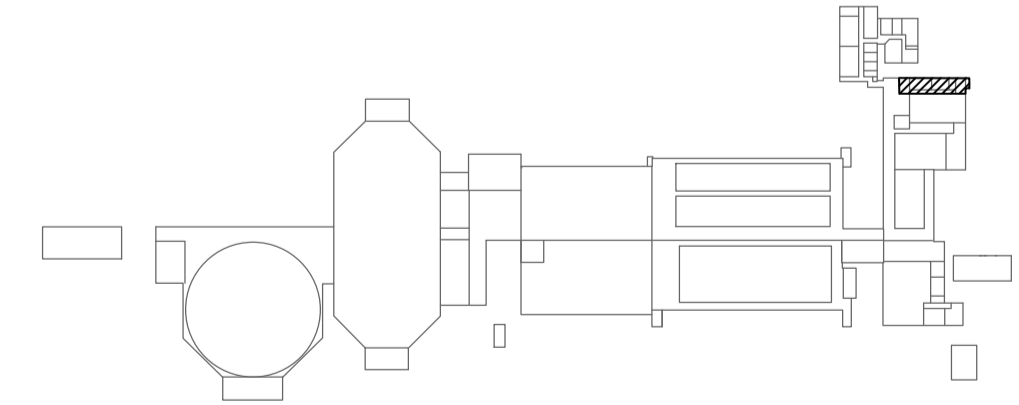
11 ADD I.S. BARRIER TO EXISTING LEVEL SWITCH WIRING. TYPICAL OF TWO SWITCHES. SEE 1-0102G-A0042 FOR WIRING DETAILS.



22 DETAIL
SCALE: NTS

22 PROVIDE HAZARDOUS RATED CONDUIT SEALS FOR INSTRUMENTATION WIRING LEAVING HAZARDOUS LOCATION. SEE SEP-2025 AND SEP-2026 FOR WIRING DETAILS.

22 EXISTING WET WELL WALL MOUNT LUMINAIRES ARE IN COMPLIANCE WITH CLASS 1, ZONE 2 REQUIREMENTS.



KEY PLAN

1-0102G-E0015	ELECTRICAL CLASSIFICATION PLAN
DRAWING NUMBER	REFERENCE DRAWINGS



NO.	REVISIONS	DATE	DESIGN	CHECK
00	ISSUED FOR TENDER, BID OPP. 7-2012	2012/02/08	TMC	CJR

DESIGNED BY:	T. CHURCH
CHECKED BY:	C. REIMER
DRAWN BY:	S. FUNK
APPROVED BY:	C. REIMER
SCALE:	1:30
RELEASED FOR CONSTRUCTION BY:	N. HARRINGTON
DATE:	2011/07/04
DATE:	2012/02/15
CONSULTANT NO.:	112577-0113-47DD-0200

ENGINEER'S SEAL
ORIGINAL DRAWING SEALED BY:
T. M. CHURCH
SNC-Lavalin
MEMBER #32682
2012/02/15
REV. 00

SOUTH END WATER POLLUTION CONTROL CENTRE ELECTRICAL CLASSIFICATION UPGRADES PLAN LAYOUT WET WELL - G102, G103			
CITY DRAWING NUMBER	SHEET	REV.	SIZE
1-0102G-E0017	001	00	A1