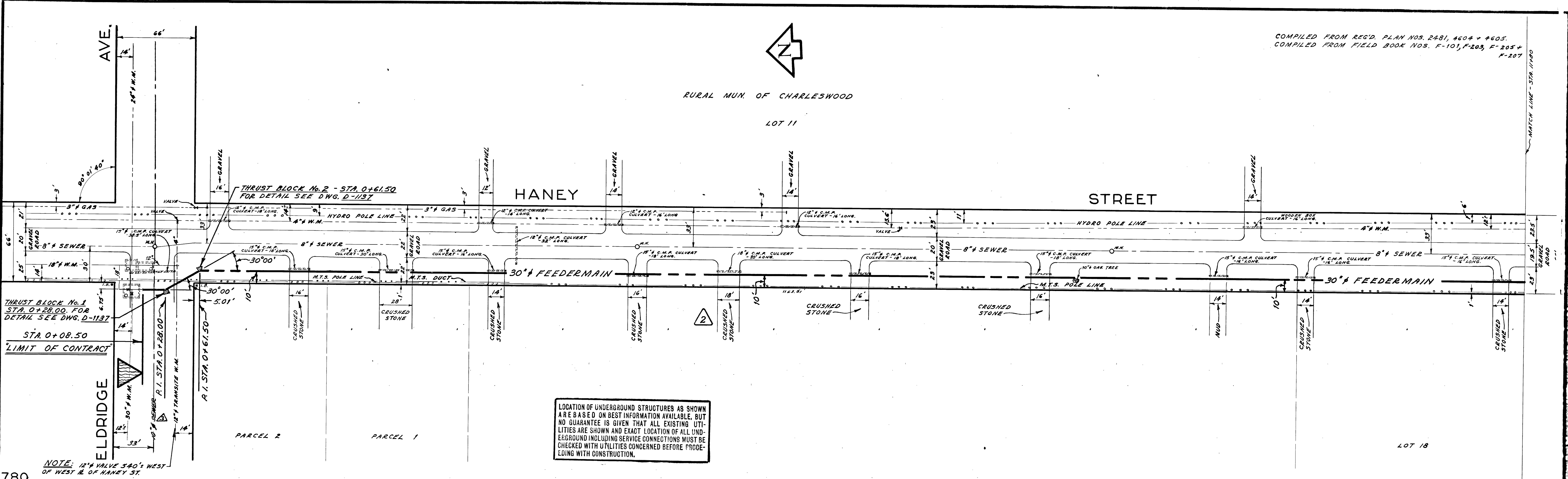


COMPILED FROM REC'D. PLAN NOS. 2481, 4604 + 4605.
COMPILED FROM FIELD BOOK NOS. F-101, F-103, F-205 + F-207

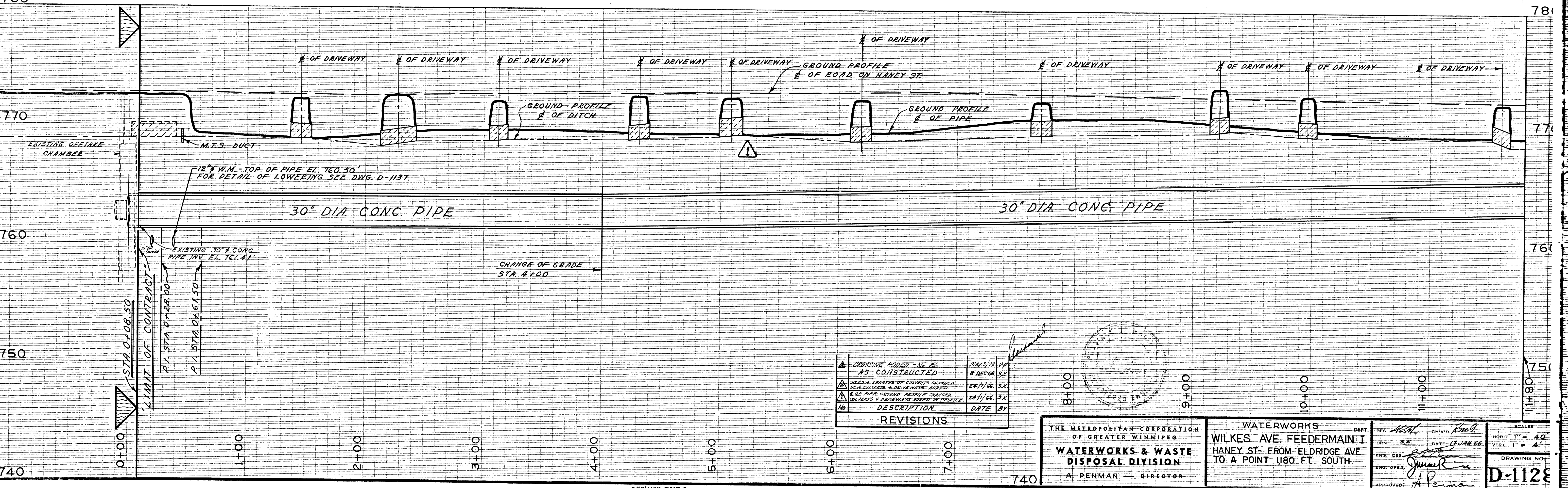
RURAL MUN. OF CHARLESWOOD

LOT 11



LOCATION OF UNDERGROUND STRUCTURES AS SHOWN ARE BASED ON BEST INFORMATION AVAILABLE, BUT NO GUARANTEE IS GIVEN THAT ALL EXISTING UTILITIES ARE SHOWN AND EXACT LOCATION OF ALL UNDERGROUND INCLUDING SERVICE CONNECTIONS MUST BE CHECKED WITH UTILITIES CONCERNED BEFORE PROCEEDING WITH CONSTRUCTION.

NOTE: 12" VALVE 340' WEST OF WEST E. OF HANEY ST.



No.	DESCRIPTION	DATE	BY
1	CROSSINGS ADDED - N.B. AS CONSTRUCTED	MAY 31 1966	S.K.
2	SIZES & LENGTHS OF CULVERTS CHANGED; NEW CULVERTS & DRIVEWAYS ADDED.	24/1/66	S.K.
3	E.O.P. OF PIPE GROUND PROFILE CHANGED; CULVERTS & DRIVEWAYS ADDED IN PROFILE	28/1/66	S.K.

THE METROPOLITAN CORPORATION OF GREATER WINNIPEG
WATERWORKS & WASTE DISPOSAL DIVISION
 A. PENMAN - DIRECTOR

WATERWORKS
 WILKES AVE FEEDERMAIN I
 HANEY ST. FROM ELDRIDGE AVE
 TO A POINT 1180 FT. SOUTH

DEPT. DES. *W.A.P.* CH'KD. *R.W.B.*
 DATE 17 JAN 66
 ENG. DES. *J. Penman*
 APPROVED: *A. Penman*
 SCALES: HORIZ. 1" = 40', VERT. 1" = 4'
 DRAWING NO. **D-1128**

City of Winnipeg
W002861

D-1128