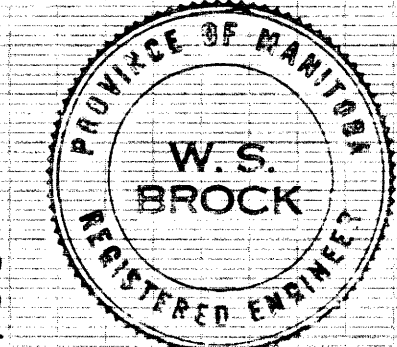
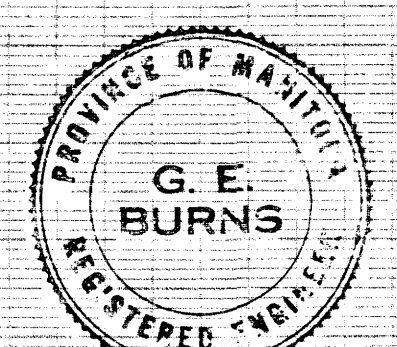
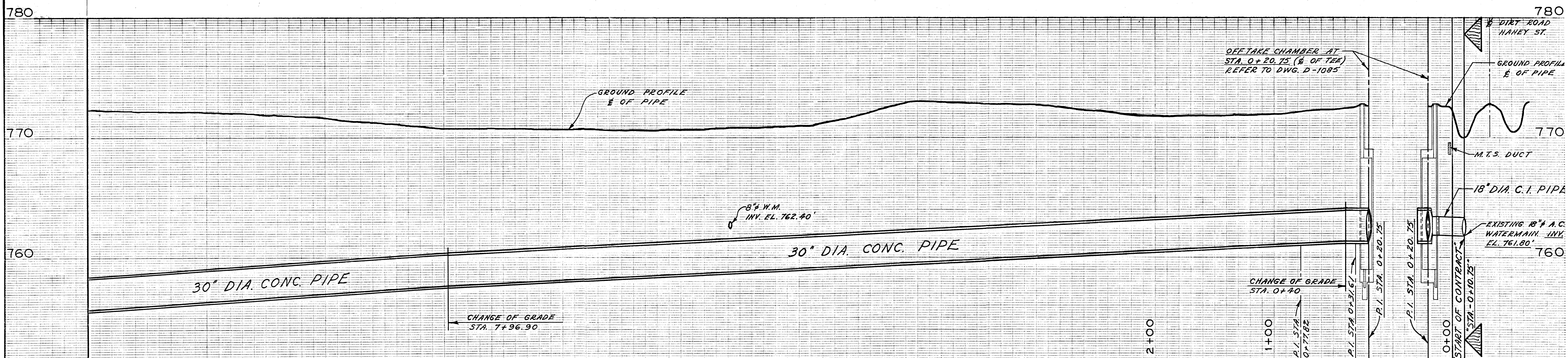
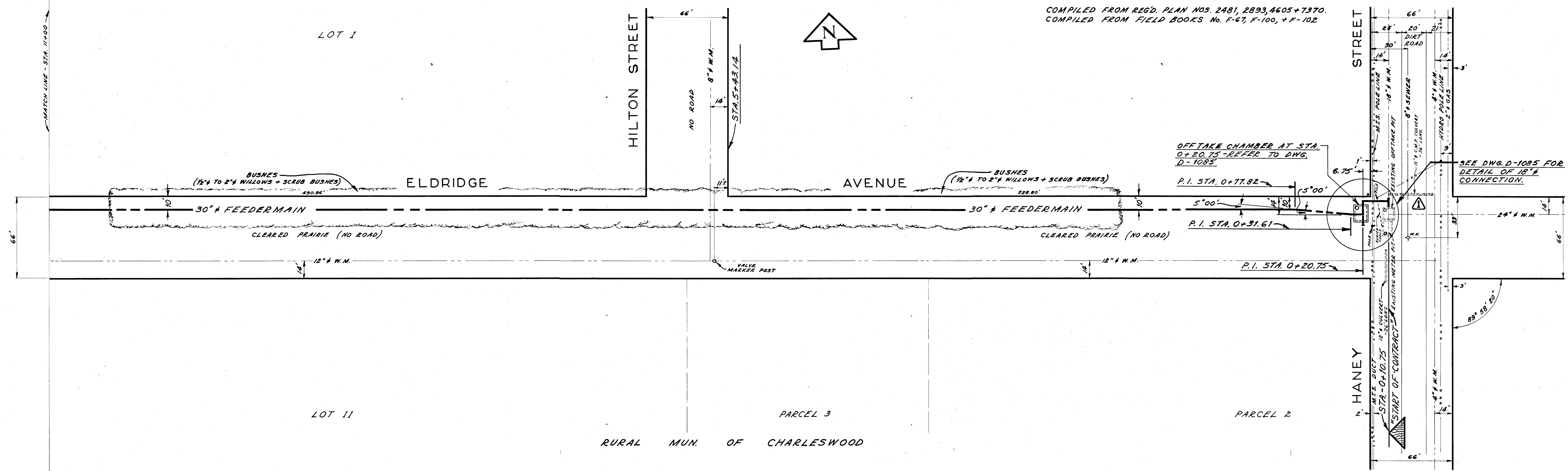


COMPILED FROM REG'D. PLAN NOS. 2481, 2893, 4605 + 7370.
COMPILED FROM FIELD BOOKS No. F-67, F-100, + F-102



REVISIONS			
NO.	DESCRIPTION	DATE	BY
1	15" C.M.P. CULVERT ADDED.	29 OCT 64 S.E.	
2	AS CONSTRUCTED.	10 AUG 68 S.K.	
3	REVISED TITLE BLOCK	09 1990 EN	
4	LEGAL DESCRIPTION		
5			
6			
7			
8			

THE METROPOLITAN CORPORATION OF GREATER WINNIPEG
WATERWORKS & WASTE DISPOSAL DIVISION
 WATERWORKS DEPT.
CHARLESWOOD - ASSINIBOIA FEEDERMAIN
 ELDRIDGE AVE. - HANEY ST. TO OAKDALE DR.
 STA. 0+10.75 TO STA. 11+00

APPROVED BY: *[Signature]* G.H.E. ENGINEER
 DESIGNED BY: W.S.B. G.E.B.
 DRAWN BY: S.K. DATE: 21 JULY 64
 SCALES: HOR. 1"=40' VERT. 1"=4'
 DRAWING NO. **D-1074**

City of Winnipeg
W002817

D-1074