

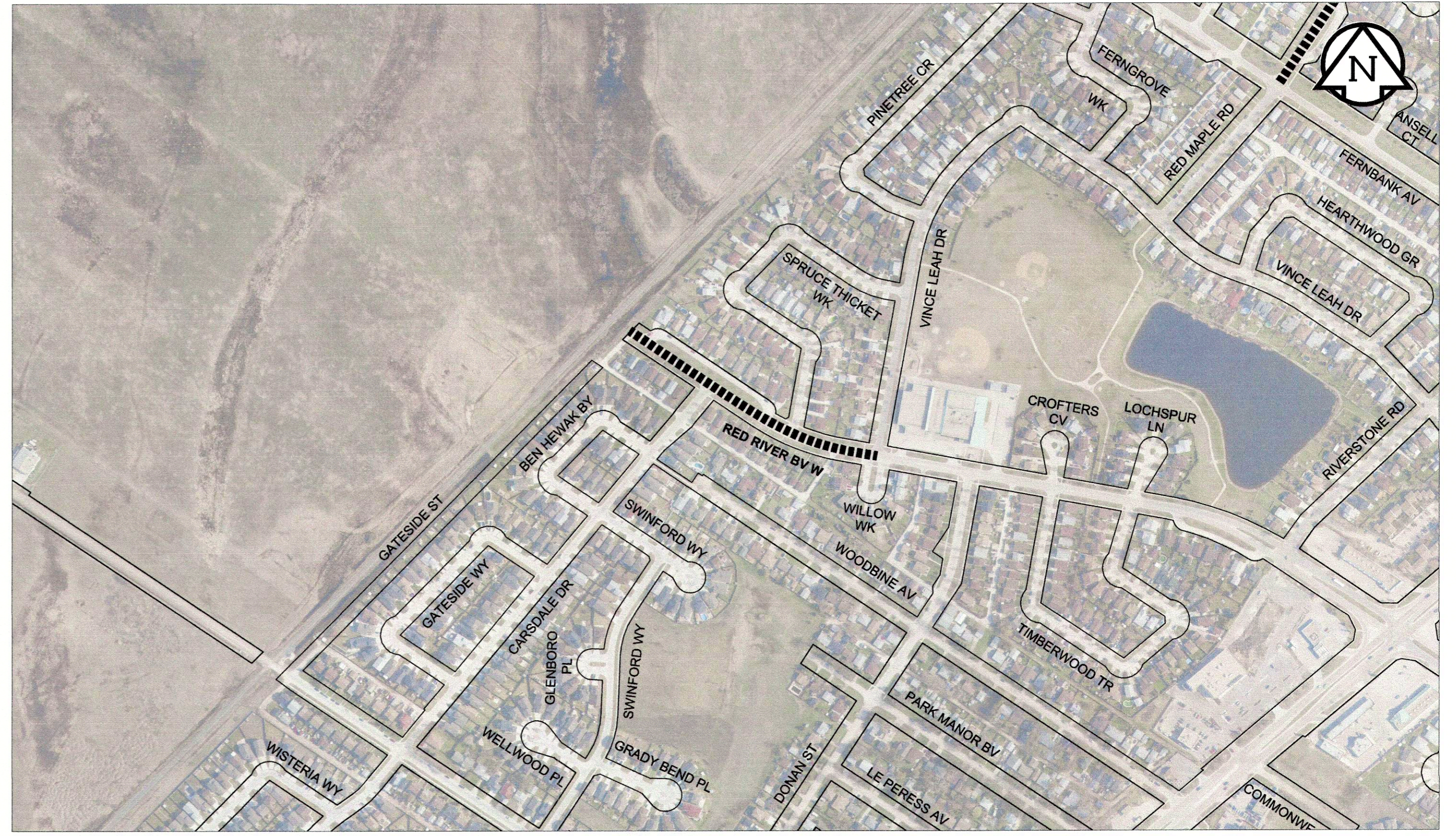
MUNROE AVE - MOLSON ST TO LOUELDA ST



PARK BLVD W - PARK BLVD N TO MOUNTBATTEN AVE





PORTSMOUTH BLVD - WEST TAYLOR BLVD TO PARK PL E S LEG

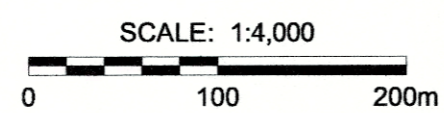


RED RIVER BLVD W - VINCE LEAH DR TO WEST END

A1 SIZE 594mm x 841mm
PLOT: 8/9/2012 1:48:18 PM
FILE NAME: W12402100-T-008_RX.dwg Saved By: adesspod

LEGEND

 LIMIT OF CONSTRUCTION
 BUS ROUTE



APECM
Certificate of Authorization
MORRISON HERSHFIELD
No. 1736 Date: August 9, 2012

LOCATION APPROVED UNDERGROUND STRUCTURES

SUPR. UG STRUCTURES COMMITTEE	DATE

NOTE:
LOCATION OF UNDERGROUND STRUCTURES AS SHOWN ARE BASED ON THE BEST INFORMATION AVAILABLE. BUT NO GUARANTEE IS GIVEN THAT ALL EXISTING UTILITIES ARE SHOWN OR THAT THE GIVEN LOCATIONS ARE EXACT. CONFIRMATION OF EXISTENCE AND EXACT LOCATION OF ALL SERVICES MUST BE OBTAINED FROM THE INDIVIDUAL UTILITIES BEFORE PROCEEDING WITH CONSTRUCTION.

BM	GBM No. 82-017	ELEV 232.733m
0	ISSUED FOR CONSTRUCTION	12/08/09 RPB
No.	REVISIONS	YYMMDD BY

MORRISON HERSHFIELD

DESIGNED BY	JGK	CHECKED BY	RPB
DRAWN BY	DML	APPROVED BY	BWB
HOR. SCALE	1:4000	RELEASED FOR CONSTRUCTION	
VERT. SCALE	N/A	DATE	12/08/09

PROFESSIONAL'S SEAL

PROVINCE OF MANITOBA
REGISTERED PROFESSIONAL ENGINEER
R.P. BRUCE

CONSULTANT DRAWING No.
W12402100-T-008_RX.dwg

THE CITY OF WINNIPEG
PUBLIC WORKS DEPARTMENT
ENGINEERING DIVISION

2012 THIN BITUMINOUS OVERLAY (TBO) PROGRAM AND FLOOD DAMAGE RESTORATION WORKS

MUNROE AVE, PARK BLVD W, PORTSMOUTH BLVD & RED RIVER BLVD W

CITY DRAWING NUMBER	N/A
SHEET	8 OF 11
DRAWING No.	8
REV	0

BID OPPORTUNITY No. 649-2012