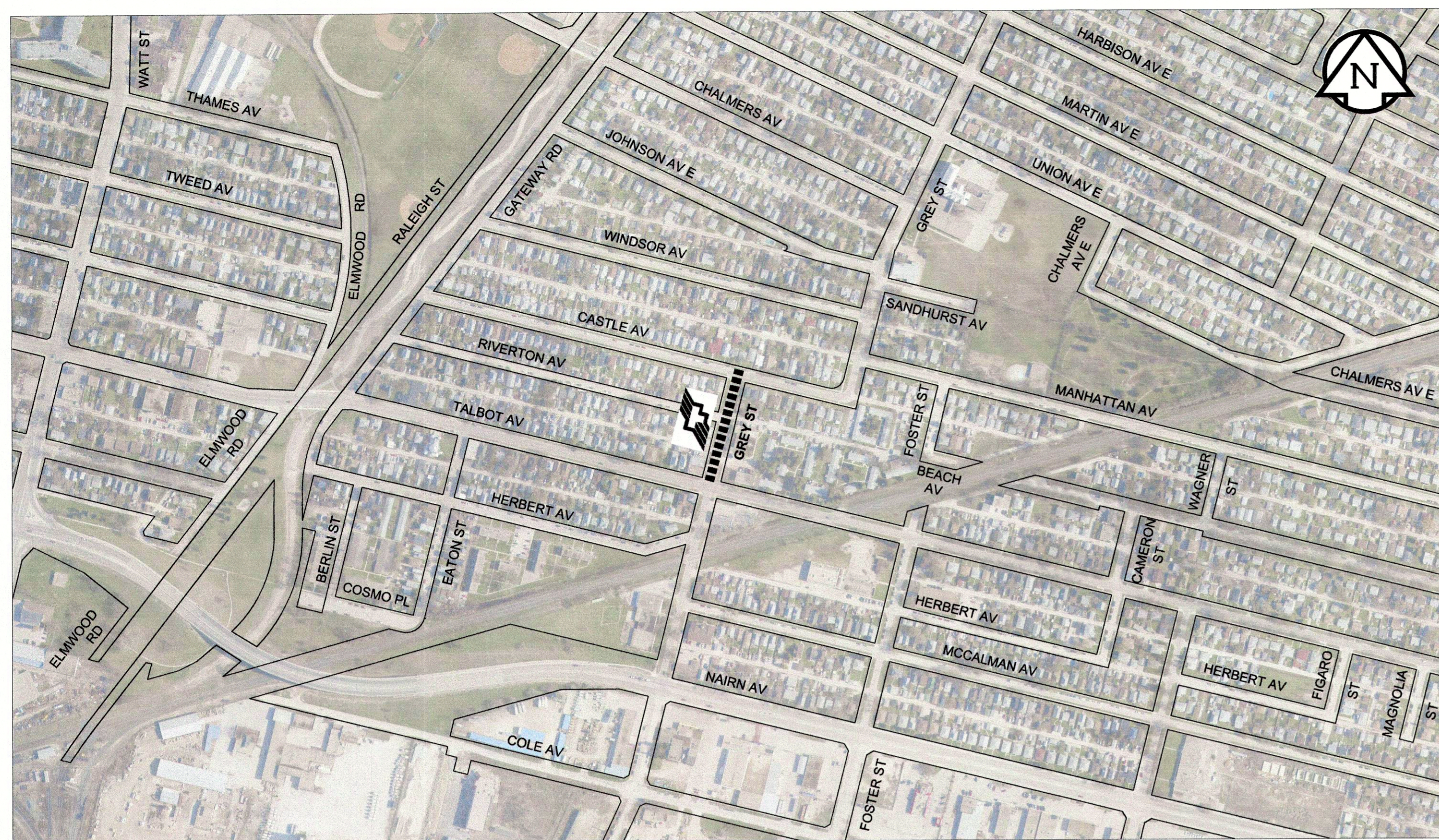
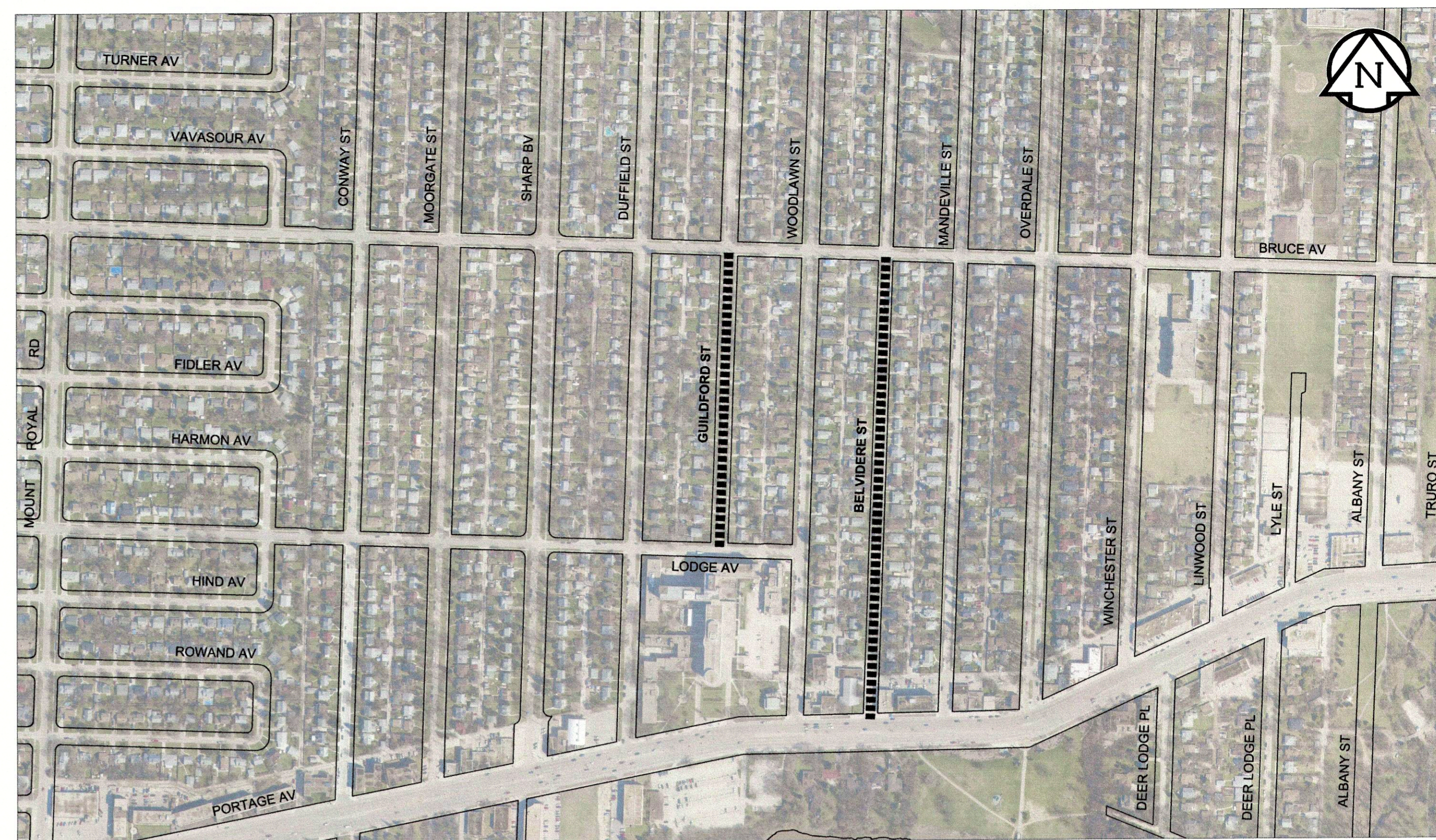


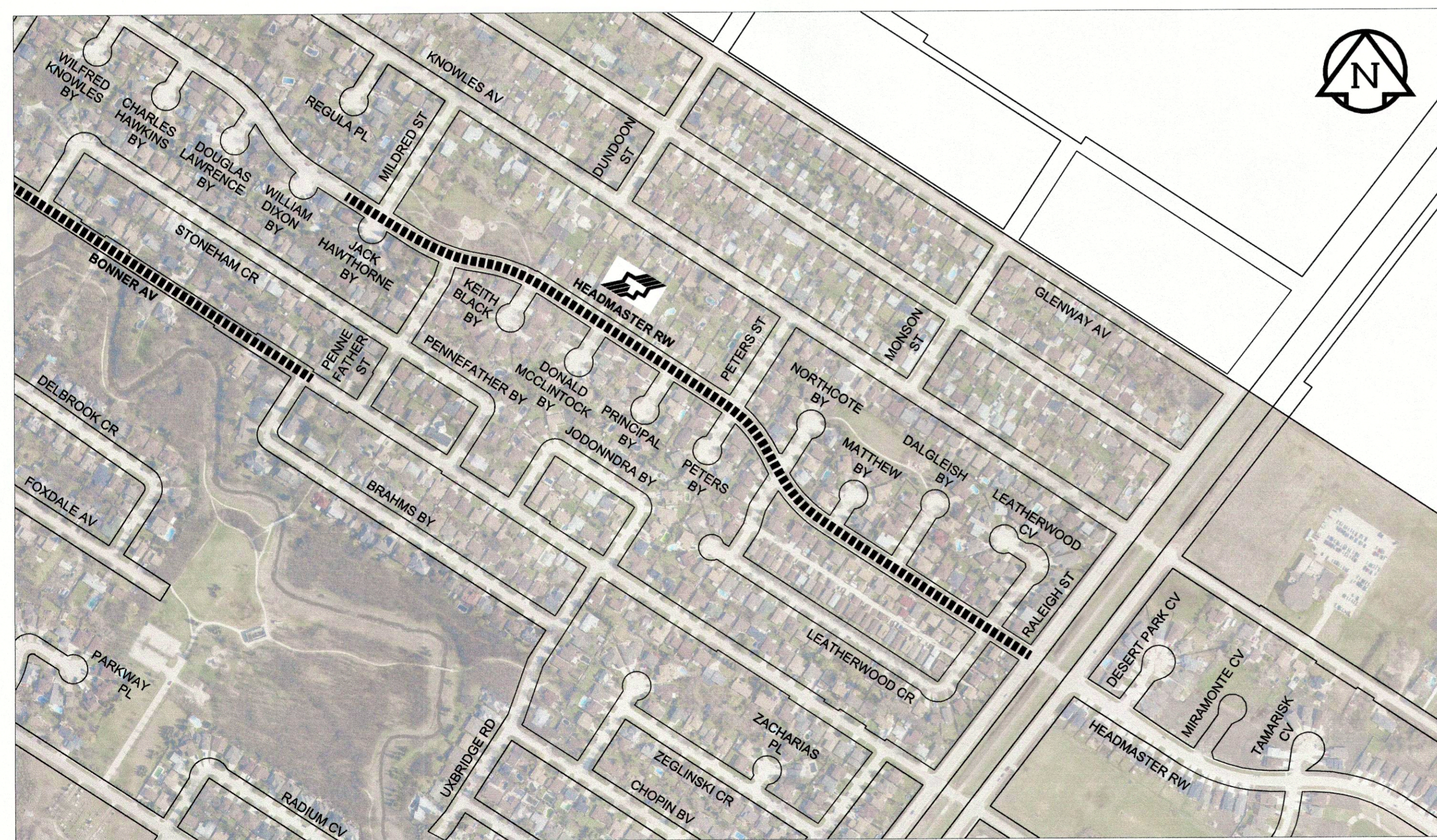
A1 SIZE 594mm x 841mm



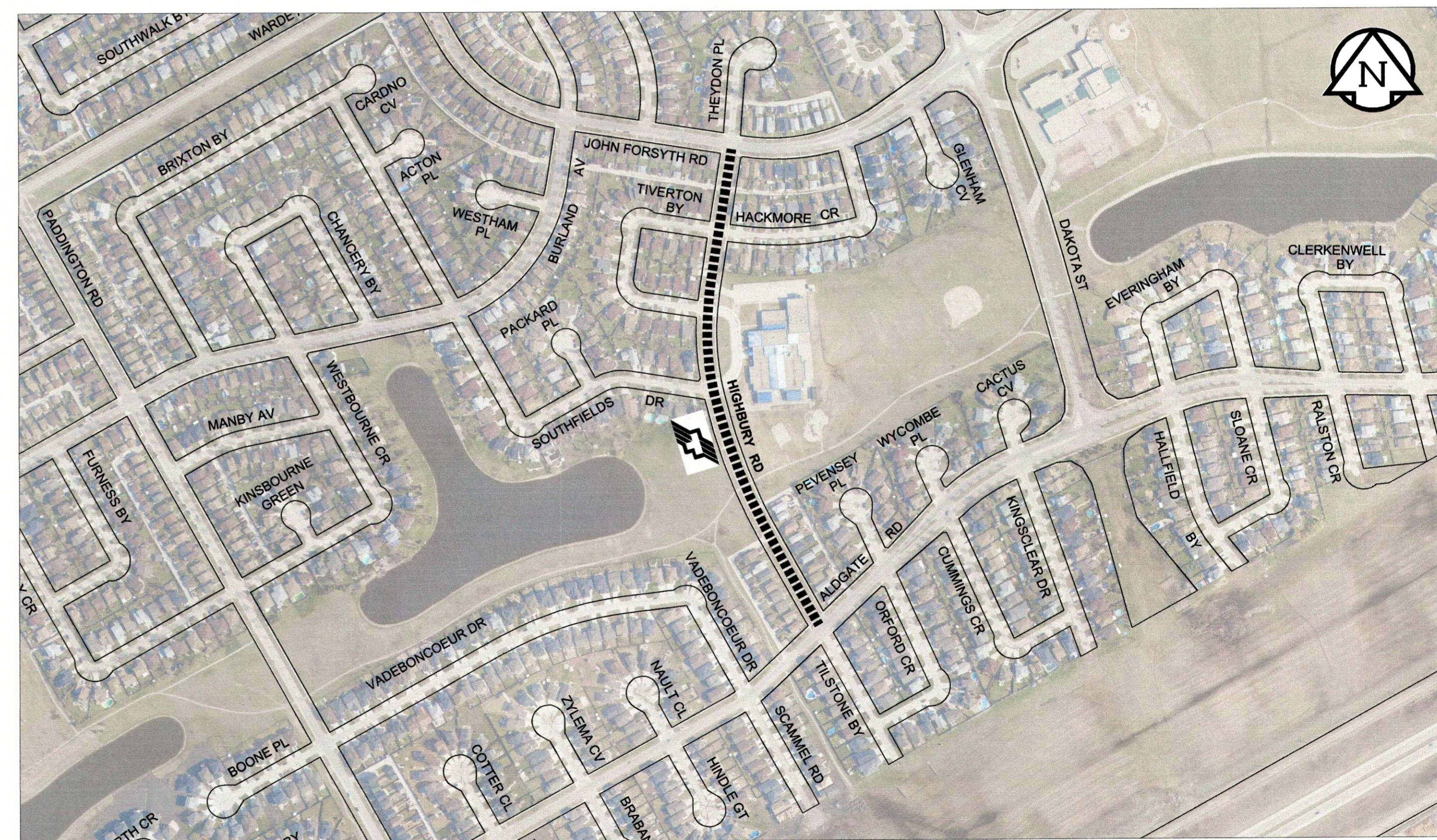
GREY ST - TALBOT AVE TO CASTLE AVE



GUILDFORD ST - LODGE AVE TO BRUCE AVE



HEADMASTER ROW - RALEIGH ST TO MILDRED ST



HIGHBURY RD - JOHN FORSYTH RD TO ALDGATE RD

PL0T: 8/9/2012 10:30:59 AM

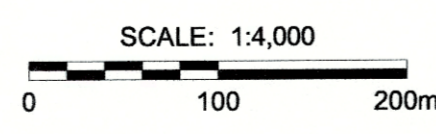
FILE NAME: W12402100-T-005_RX.dwg Saved By: ddszpod

BID OPPORTUNITY No. 649-2012

LEGEND

■■■■■ LIMIT OF CONSTRUCTION

BUS ROUTE



APFCM
Certificate of Authorization
MORRISON HERSHFELD
No. 1736 Date: August 9, 2012

LOCATION APPROVED UNDERGROUND STRUCTURES

SUPR. U/G STRUCTURES COMMITTEE	DATE

NOTE:
LOCATION OF UNDERGROUND STRUCTURES AS SHOWN ARE BASED ON THE BEST INFORMATION AVAILABLE. BUT NO GUARANTEE IS GIVEN THAT ALL EXISTING UTILITIES ARE SHOWN OR THAT THE GIVEN LOCATIONS ARE EXACT. CONFIRMATION OF EXISTENCE AND EXACT LOCATION OF ALL SERVICES MUST BE OBTAINED FROM THE INDIVIDUAL UTILITIES BEFORE PROCEEDING WITH CONSTRUCTION.

0	ISSUED FOR CONSTRUCTION	12/08/09	RPB
No.	REVISIONS	YYMMDD	BY

MORRISON HERSHFELD	
DESIGNED BY	JGK
CHECKED BY	RPB
DRAWN BY	DML
APPROVED BY	BWB
HOR. SCALE	1:4000
VERT. SCALE	N/A
DATE	12/08/09

PROFESSIONAL'S SEAL

CONSULTANT DRAWING No.
W12402100-T-005_RX.dwg

THE CITY OF WINNIPEG
PUBLIC WORKS DEPARTMENT
ENGINEERING DIVISION

2012 THIN BITUMINOUS OVERLAY (TBO) PROGRAM AND FLOOD DAMAGE RESTORATION WORKS

GREY ST, GUILDFORD ST, HEADMASTER ROW & HIGHBURY RD

CITY DRAWING NUMBER	N/A
SHEET	5 OF 11
DRAWING No.	5
REV	0

METRIC
WHOLE NUMBERS INDICATE MILLIMETRES
DECIMALIZED NUMBERS INDICATE METRES