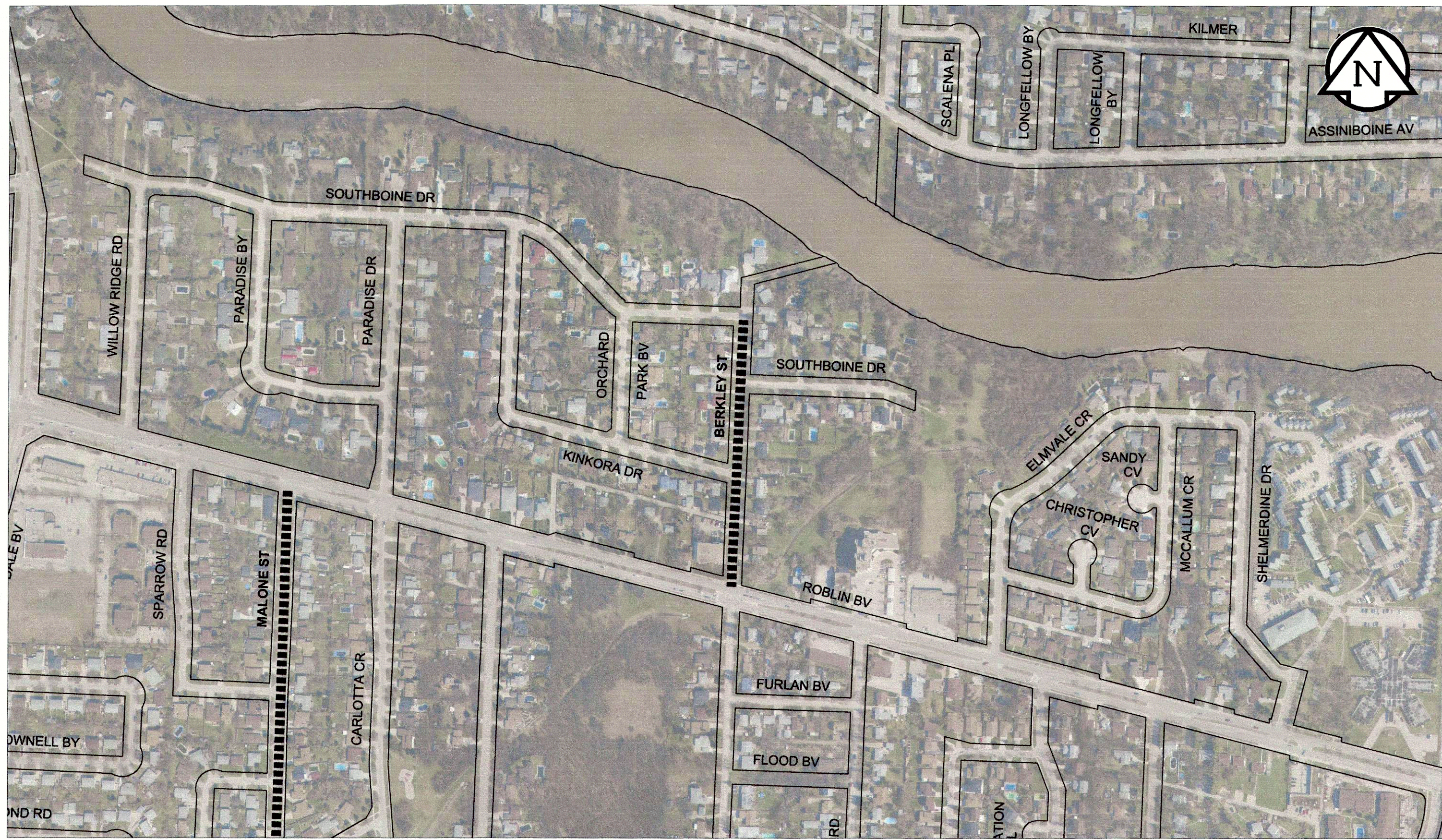
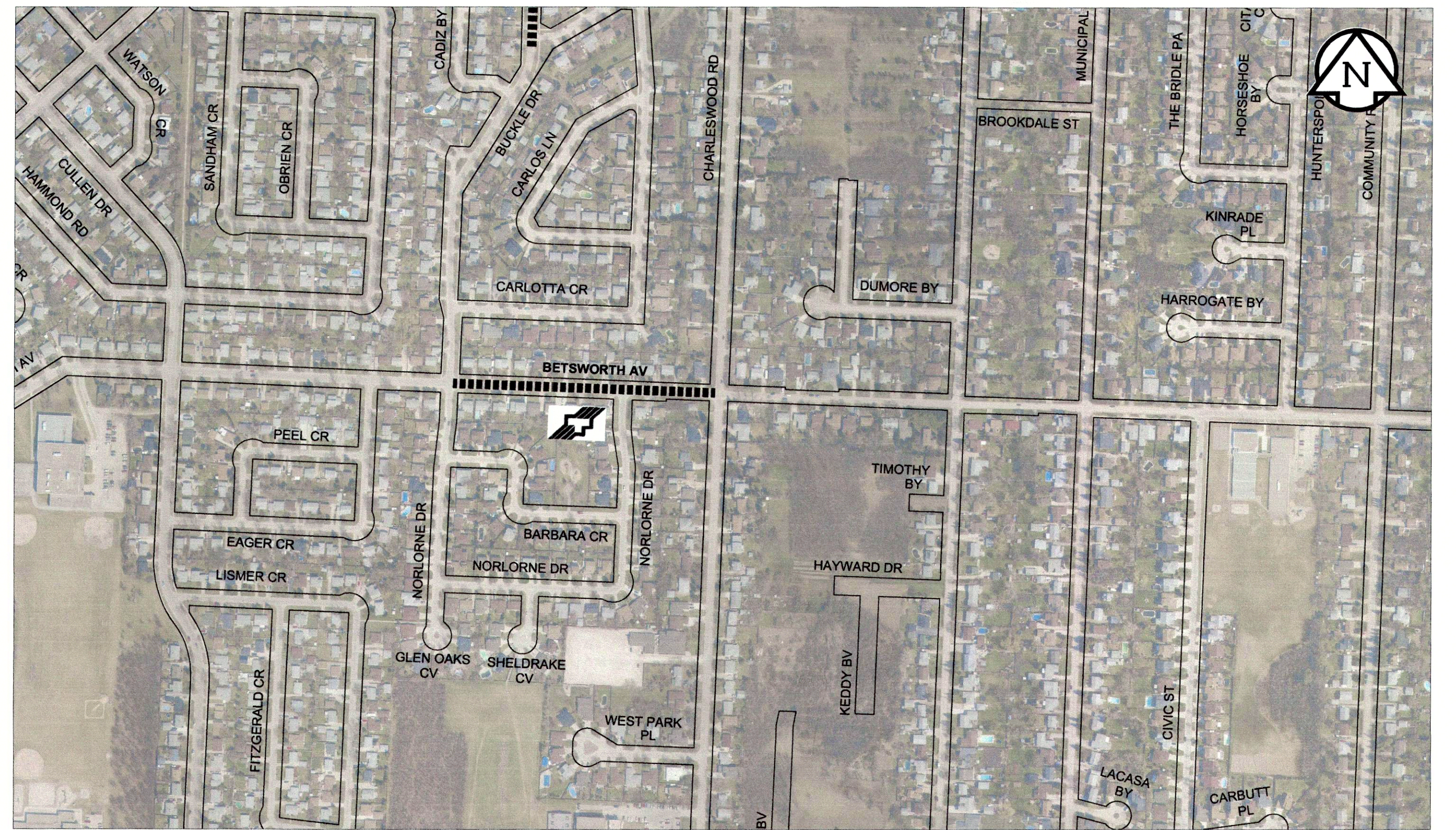


A1 SIZE 594mm x 841mm



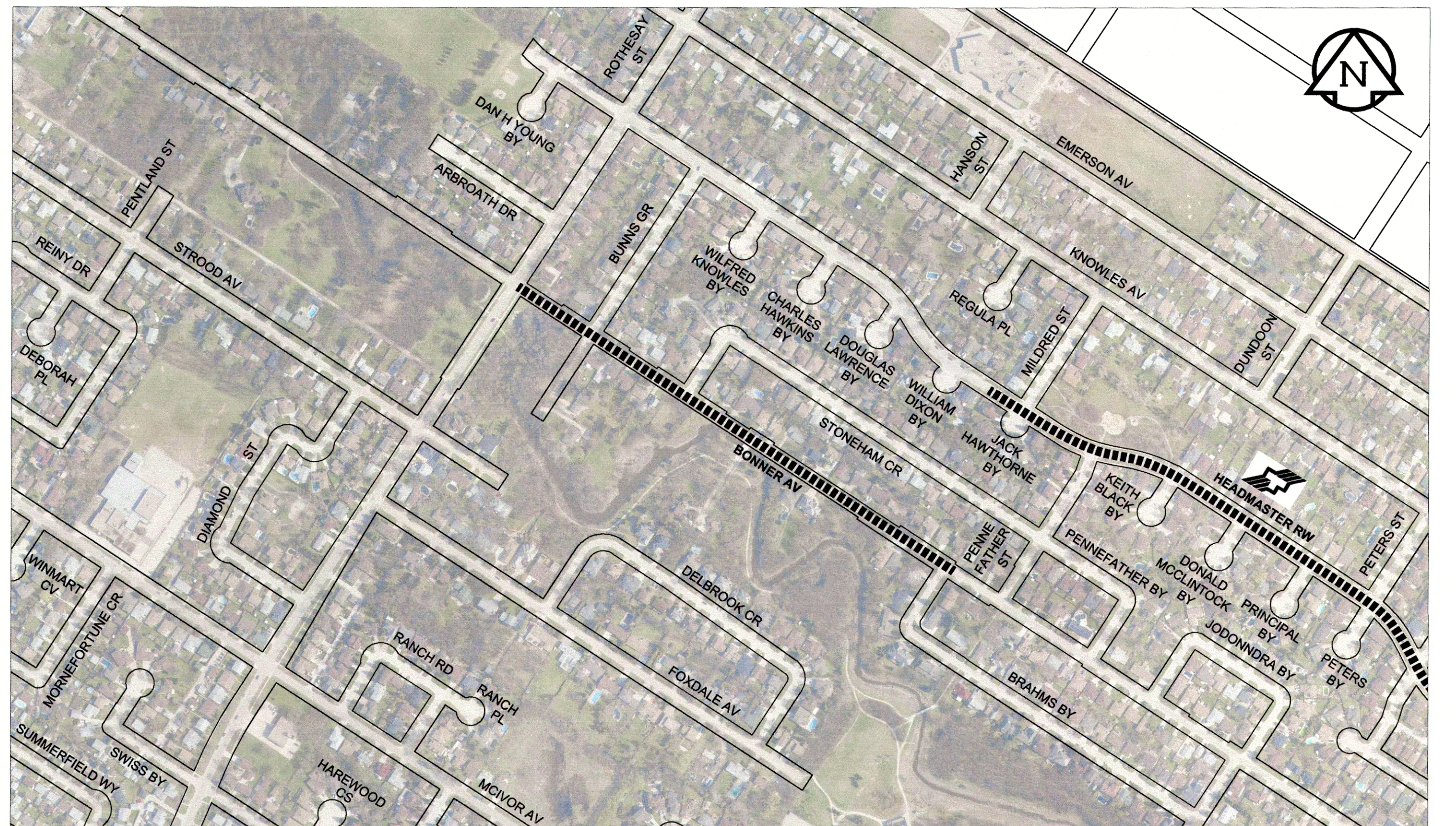
BERKLEY ST - ROBLIN BLVD TO SOUTHBOINE DR



BETSWORTH AVE - CHARLESWOOD RD TO NORLORNE DR W LEG



BIRCHDALE AVE - HIGHFIELD ST TO WALMER ST



BONNER AVE - ROTHESAY ST TO BRAHMS BAY

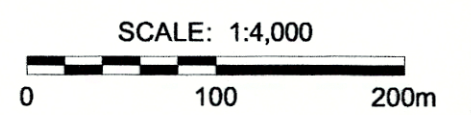
PLOT: 89/2012 10:28:12 AM

FILE NAME: W12402100-T-003_RX.dwg Saved By: ddeszpod

METRIC
WHOLE NUMBERS INDICATE MILLIMETRES
DECIMALIZED NUMBERS INDICATE METRES

LEGEND

- LIMIT OF CONSTRUCTION
- BUS ROUTE



APEGM
Certificate of Authorization
MORRISON HERSHFIELD
No. 1736 Date: August 9, 2012

LOCATION APPROVED UNDERGROUND STRUCTURES

SUPR. U/G STRUCTURES DATE COMMITTEE

NOTE:
LOCATION OF UNDERGROUND STRUCTURES AS SHOWN ARE BASED ON THE BEST INFORMATION AVAILABLE. BUT NO GUARANTEE IS GIVEN THAT ALL EXISTING UTILITIES ARE SHOWN OR THAT THE GIVEN LOCATIONS ARE EXACT. CONFIRMATION OF EXISTENCE AND EXACT LOCATION OF ALL SERVICES MUST BE OBTAINED FROM THE INDIVIDUAL UTILITIES BEFORE PROCEEDING WITH CONSTRUCTION.

BM	GBM No. 82-017	
	ELEV 232.733m	
0	ISSUED FOR CONSTRUCTION	12/08/09 RPB
No.	REVISIONS	YYMMDD BY

DESIGNED BY	JGK
CHECKED BY	RPB
DRAWN BY	DML
APPROVED BY	BWB
HOR. SCALE	1:4000
VERT. SCALE	N/A
RELEASED FOR CONSTRUCTION	
DATE	12/08/09

PROFESSIONAL'S SEAL

PROVINCE OF MANITOBA

R.P. BRUCE

REGISTERED PROFESSIONAL ENGINEER

CONSULTANT DRAWING No.
W12402100-T-003_RX.dwg

THE CITY OF WINNIPEG
PUBLIC WORKS DEPARTMENT
ENGINEERING DIVISION

2012 THIN BITUMINOUS OVERLAY (TBO) PROGRAM AND FLOOD DAMAGE RESTORATION WORKS

BERKLEY ST, BETSWORTH AVE, BIRCHDALE AVE & BONNER AVE

CITY DRAWING NUMBER	N/A
SHEET	3 OF 11
DRAWING No.	3
REV	0

BID OPPORTUNITY No. 649-2012