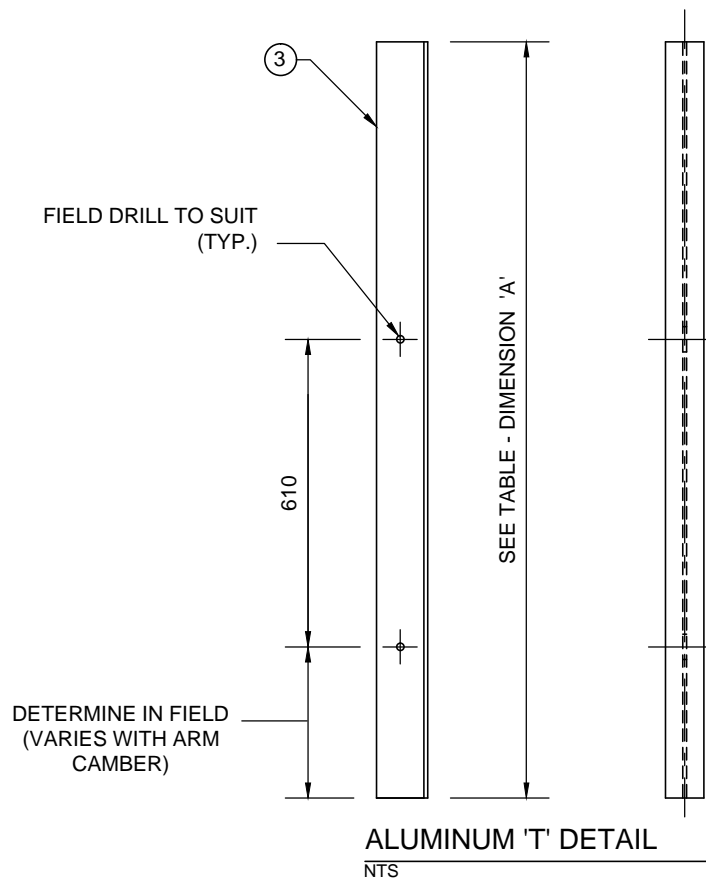


SIGN MOUNTING ADJUSTABLE BRACKET DETAIL
1:10 (TYPICAL FOR 8 SIDED STRUCTURES 300 TO 400 A/F)



BILL OF MATERIALS (PER BRACKET)

MK.	QTY.	SIZE	MATERIAL
1	2	665 x 76 x 10	CSA G40.21 300W
2	1	710 x 250 x 10	CSA G40.21 300W
3	2	19DIA x 219	S/S THREADED ROD UNC ASTM F593 (TYPE 304) C/W 2 NUTS, JAM NUTS AND WASHERS
4	2	13DIA x 50	S/S BOLT C/W NUT, 2 FLAT WASHERS, 1 LOCK WASHER, ASTM A193 GRADE B8
5	1	102 x 76 x 8	ALUMINUM "T" BAR 6061-T6 ASTM B221 (SEE NOTE 4)

NOTES

- LOWER SLOTTED HOLE IN MK. 2 SHALL ALLOW FOR PIVOTING ABOUT UPPER HOLE.
- SURFACE PREPARATION TO SSPC:SP6
- GALVANIZE IN ACCORDANCE WITH ASTM A123 TO A NET RETENTION OF 610 g/m².
- MK. 5 SUPPLIED BY OTHERS

TABLE OF BRACKETS

BRACKET I.D.	ARM A/F (AT BRACKET LOCATION)	DIMENSION 'A'
1A	*350±	*1524±
1B	*350±	*1524±
1C	*350±	*1524±
2A	*350±	*1524±
2B	*350±	*1524±

* VERIFY DIMENSIONS IN THE SHOP DURING REFURBISHMENT

METRIC

WHOLE NUMBERS INDICATE MILLIMETRES
DECIMALIZED NUMBERS INDICATE METRES



NO.	REVISIONS	DATE	BY
1	ISSUED FOR TENDER	09/12/12	CDW

DESIGNED BY	CDW
DRAWN BY	JLD
CHECKED BY	SSR
APPROVED BY	
HOR. SCALE	NTS
VERTICAL	NTS
DATE	09/12/12

DILLON CONSULTING

RELEASED FOR CONSTRUCTION
ORIGINAL SIGNED BY B.A. NEIRINCK
DATE 09/12/12

ENGINEER'S SEAL
PROVINCE OF MANITOBA
REGISTERED PROFESSIONAL ENGINEER
S.S. RIHAL
Sept 12, 2012

CONSULTANT PROJECT NO.
12-6533

THE CITY OF WINNIPEG
PUBLIC WORKS DEPARTMENT

STEEL OVERHEAD SIGN SUPPORT
STRUCTURES - 2012 MAINTENANCE WORKS

STRUCTURE NO. S644 DETAILS

CITY DRAWING NUMBER
OHSS-12-07
SHEET 07 OF 07
CONSULTANT DRAWING NUMBER