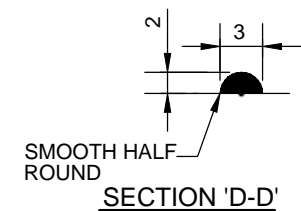
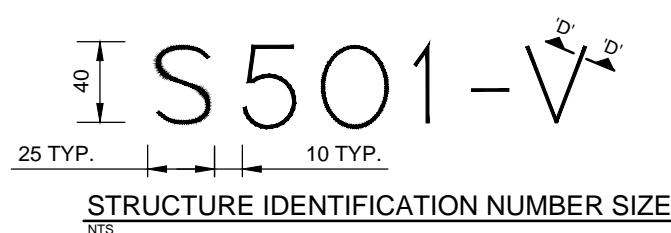


- NOTES**
1. PROVIDE "RAISED" IDENTIFICATION NO. WITH WELDING ELECTRODE FOR THE SIGN STRUCTURE.
 2. GRIND ALL SHARP POINTS AND EDGES.



BILL OF MATERIALS		
MK	QTY	DESCRIPTION
1	1	DODECAGONAL SHAFT 300 A/F x 6.4 THICK PLATE
2	1	BACK-UP STRIP 38 x 6
3	1	BASE PLATE 600 DIA. x 38 THICK
4	1	TOP PLATE 12 THICK
5	2	DODECAGONAL GUSSET PLATE 8 THICK
6	1	DODECAGONAL ARM 300 A/F TO 150 A/F x 6.4 THICK PLATE
7	1	DODECAGONAL END PLATE 150 A/F x 6.4 THICK
8	1	BACK-UP STRIP 38 x 5
9	2	FLANGE PLATE 32 THICK
10	8	25 DIA. BOLTS C/W NUT & 2 FLAT WASHERS, ASTM A325 GALV.
11	2	SIDE GUSSET PLATE 20 THICK
12	1	GUSSET PLATE 12 THICK
13	1	GUSSET PLATE 12 THICK
		HANDHOLE MARK H1
14	1	COVER PLATE 11 GA. x 160x 340 (A569)
15	1	REINFORCING RING 8 x 65 x 830
* 16	2	CLAMP BAR 6 x 40 x 180
* 17	2	10 DIA. x 140 BOLT S/S (TYPE 316)
* 18	1	GROUND STUD ASSEMBLY 10 DIA. x 40
		HANDHOLE MARK H2
19	1	COVER PLATE 11 GA. x 130 x 220 (A569)
20	1	REINFORCING RING 8 x 65 x 555
* 21	1	CLAMP BAR 6 x 40 x 150
* 17	1	10 DIA. x 140 BOLT S/S (TYPE 316)
* 18	1	GROUND STUD ASSEMBLY 10 DIA. x 40

- *NOTES:**
1. MARK NO. 16 & 21 C/W 8-DIA. PUNCHED 10 N.C. TAPPED AT THE CENTER OF PLATE.
 2. MARK NO. 17 C/W CUP WASHER.
 3. MARK NO. 18 C/W 2-10 DIA. HEX NUT, 2-TERMINAL WASHER. & 1-LOCKWASHER

- GENERAL NOTES**
1. **DESIGN DATA**
AASHTO STANDARD SPECIFICATIONS FOR STRUCTURAL SUPPORTS FOR HIGHWAY SIGNS, LUMINAIRES, AND TRAFFIC SIGNALS, 5TH EDITION, 2009.
DESIGN WIND LOAD = 1.44 kPa (30 PSF)
DESIGN ICE LOAD = 0.15 kPa (3 PSF)
 2. ALL MATERIALS SHALL BE CSA G40.21 - 300W STRUCTURAL STEEL
 3. ALL MATERIALS EXCEPT STAINLESS STEEL AND ALUMINUM SHALL BE HOT-DIP GALVANIZED IN ACCORDANCE WITH ASTM A123 TO A MIN. NET RETENTION OF 610 g/m²
 4. INSTALL HOLES IN THE GUSSET PLATES FOR DRAINAGE DURING GALVANIZING AS DETAILED.
 5. ALL AREAS OF DAMAGED GALVANIZING SHALL BE REPAIRED WITH SELF-FLUXING LOW TEMPERATURE, ZINC BASED ALLOY ROD OR SPRAY-ON COATING CALLED "ZINGA".
 6. VERIFY ARM LENGTH PRIOR TO FABRICATION AFTER PILE INSTALLATION.
 7. **SIGNS**
2 SIGN PLATES, MAXIMUM SIZE 915 x 915 mm EACH. SUPPLIED AND INSTALLED BY THE CITY OF WINNIPEG TRAFFIC SERVICES BRANCH.



B.M. ELEV.	DESIGNED BY CDW		
	DRAWN BY JLD		
	CHECKED BY SSR		
	APPROVED BY		
	HOR. SCALE NTS	RELEASED FOR CONSTRUCTION	CONSULTANT PROJECT NO. 12-6533
	VERTICAL NTS	ORIGINAL SIGNED BY B.A. NEIRINCK	
1 ISSUED FOR TENDER	09/12/12 CDW	DATE 09/12/12	
NO. REVISIONS	DATE	BY	

THE CITY OF WINNIPEG PUBLIC WORKS DEPARTMENT

Winnipeg

STEEL OVERHEAD SIGN SUPPORT STRUCTURES - 2012 MAINTENANCE WORKS

CITY DRAWING NUMBER OHSS-12-05

SHEET 05 OF 07

CONSULTANT DRAWING NUMBER

STRUCTURE NO. S501 DETAILS