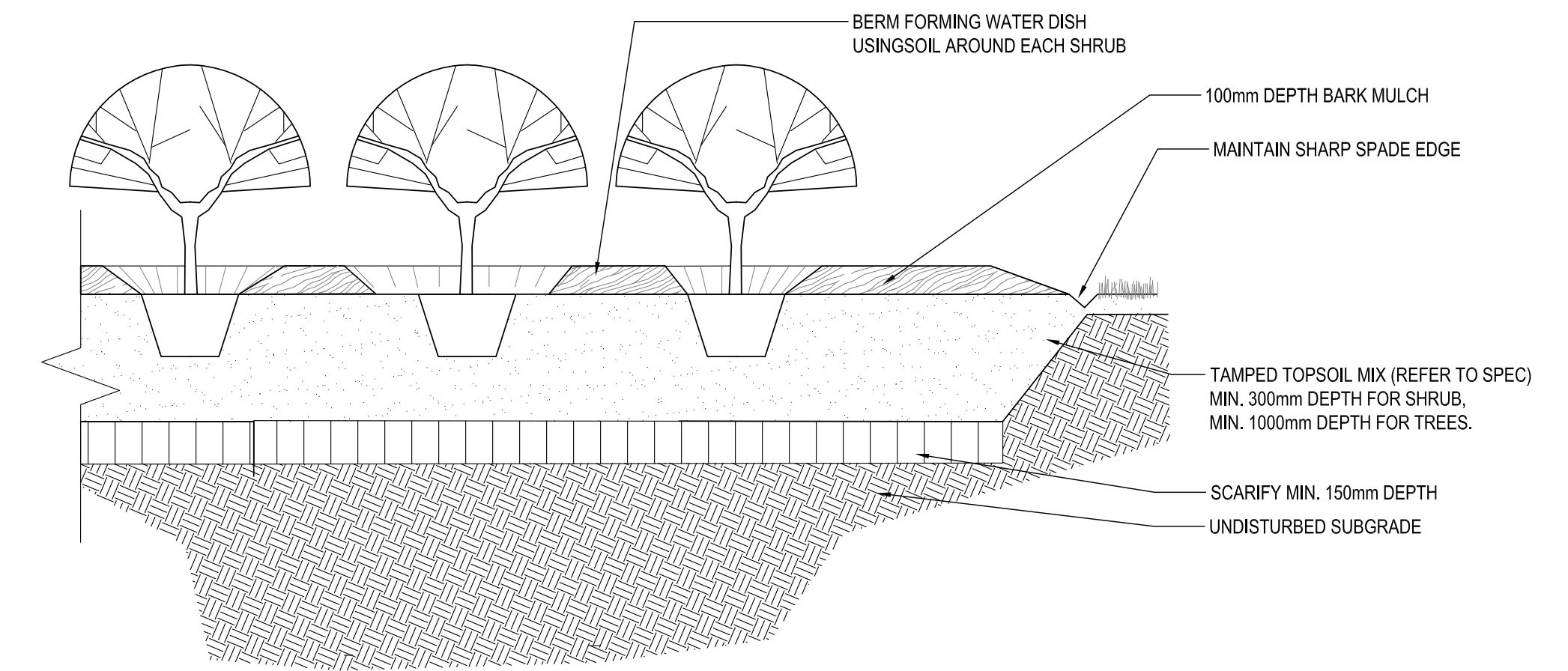
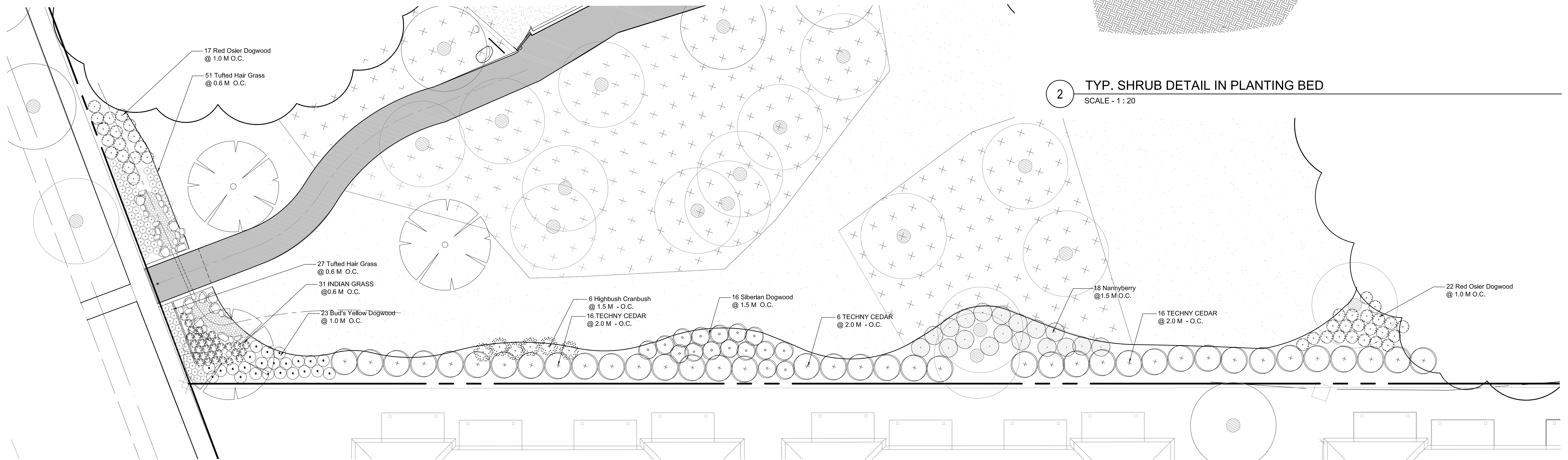


sheet size: Super A1 24" x 36" plot scale: 1" = 100' CAD File Name: tender document\07-shorehill park planting.dwg

| Symbol | Shrubs / Small Trees - refer to L7 for detail layout | | |
|--------|--|----------|---|
| | Red Osier Dogwood / <i>Cornus sericea</i> | 39 | 900mm height, min. 9 basal stems, dense, bushy plant, Container |
| | Siberian Dogwood / <i>Cornus alba Siberica</i> | 16 | 750mm height, min. 6 basal stems, dense, bushy plant, Container |
| | Bud's Yellow Dogwood / <i>Cornus alba Bud's Yellow</i> | 23 | 900mm height, min., 9 basal stems, dense, bushy plant, Container |
| | Techny Cedar / <i>Thuja occidentalis 'Techny'</i> | 38 | 2000mm height min., 750mm wide rootball / or 20 gal Pot. |
| | Nannyberry / <i>Viburnum lentago</i> | 18 | 900mm height, 2 gal. container, dense bushy plant with 7 major basal stems. |
| | American Highbush Cranberry / <i>Viburnum trilobum</i> | 13 | 750mm height, 2 gal. container, dense bushy plant with 7 major basal stems. |
| Symbol | Groundcover & Native Grasses | | |
| | Enviro-Green Eco Sod | 8,510 M2 | Refer to Specification |
| | Top Dress Seed | 1,200 M2 | Refer to Specification |
| | Indian Grass / <i>Sorghastrum nutans</i> | 31 | 100mm [4"] container, dense bushy plant. |
| | Tufted Hair Grass / <i>Deschampsia caespitosa</i> | 78 | 100mm [4"] container, dense bushy plant. |



2 TYP. SHRUB DETAIL IN PLANTING BED
SCALE - 1 : 20

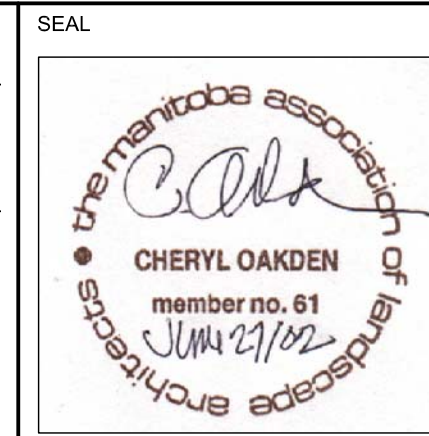


1 CONDO BUFFER PLANTING
SCALE - 1 : 150

NOTES:

A. SECTION LETTER OR DETAIL NUMBER, B. DRAWING WHERE SECTION OR DETAIL IS DRAWN,
OR
A. DRAWING WHERE SECTION OR DETAIL IS INDICATED,
--- SECTION OR DETAIL SHOWN ON SAME DRAWING.

| REV | YY / MM / DD | DESCRIPTION | BY |
|-----|--------------|-------------------|----|
| 0 | 12.09.13 | ISSUED FOR TENDER | CO |



CLIENT
CITY OF WINNIPEG
PLANNING, PROPERTY AND DEVELOPMENT DEPARTMENT
CIVIC ACCOMMODATIONS DIVISION
300 - 65 GARRY ST. R3C 4K4

SCATLIFF + MILLER + MURRAY Inc.
TEL 204 927-3444
FAX 204 927-3443
1120 - 201 PORTAGE AVENUE
WINNIPEG, MB, CANADA

| | | | |
|---------|----------|---|-------------|
| PROJECT | | SHOREHILL DRIVE PARK SPACE DEVELOPMENT | |
| TITLE | | PLANTING DETAILED LAYOUT PLANT LIST & DETAIL | |
| DESIGN | DRAWN | DATE - Y / M / D | SCALE |
| CO | IT | 12/06/04/ | AS SHOWN |
| CHECKED | APPROVED | PROJECT NO. | DRAWING NO. |
| CO | CO | 11-0107-34 | L7 |