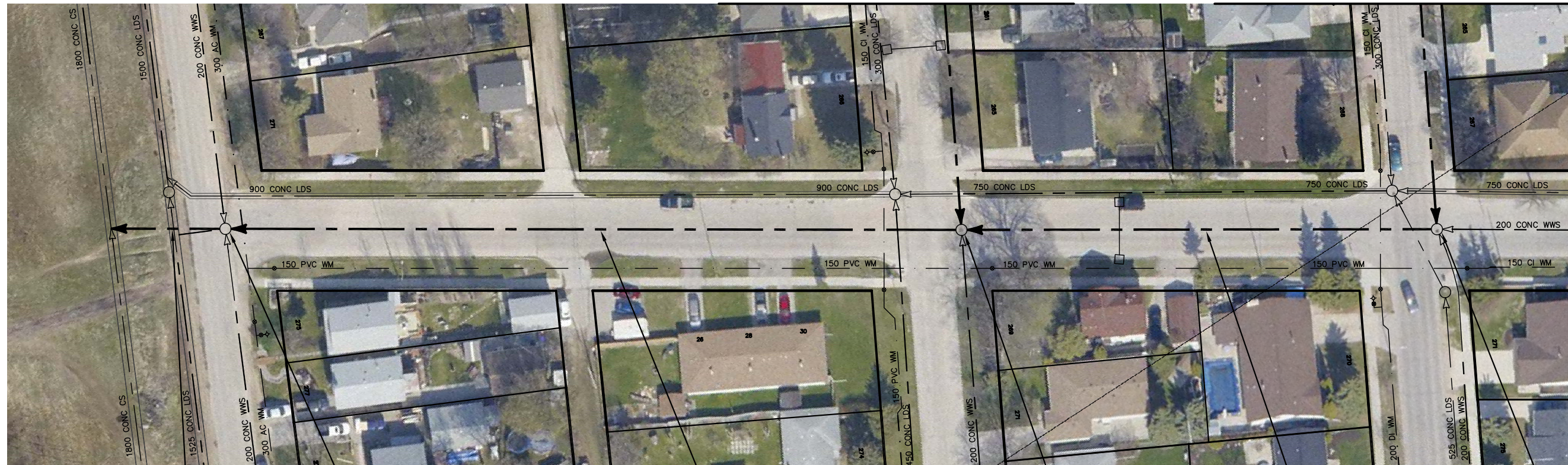
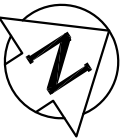


PENTLAND STREET

FOR CONTINUATION
SEE DWG 10362

FOR CONTINUATION
SEE DWG 10346



19.80 OF 200 CONC WWS
TO BE LINED S-MA70021186
(FULLY DETERIORATED)

S-MH40000771
RIM 230.55
INV N 225.32
INV E 226.01
INV S 225.17
INV W 225.79

123.00 OF 200 CONC WWS
TO BE LINED S-MA40000855
(FULLY DETERIORATED)

S-MH40000772
RIM
INV N 225.73
INV E 225.75
INV S 225.72
INV W 225.76

80.00 OF 200 CONC WWS
TO BE LINED S-MA40000856
(FULLY DETERIORATED)

S-MH40000815
RIM
INV N 226.30
INV E 226.10
INV S 226.08
INV W 226.08

WARNING

IF POWER EQUIPMENT OR EXPLOSIVES
ARE TO BE USED FOR EXCAVATION ON
THIS PROJECT THE CONTRACTOR MUST:

- 1) NOTIFY THE GAS COMPANY OF THE
PROPOSED LOCATION OF EXCAVATION.
- 2) TAKE PRECAUTION TO AVOID DAMAGE
TO GAS COMPANY INSTALLATIONS.

SEE PROVINCIAL REGULATION 210/72 FOR DETAILS

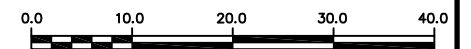
SEWER JUNCTION INFORMATION FROM SEWER VIDEO INSPECTION		
SEWER ID S-MA70021186		
DISTANCE FROM MH ID S-MH40000771		
DISTANCE	DIAMETER	CLOCK
35.2	150	2
37.0	150	10
89.6	150	10
95.8	150	10

SEWER JUNCTION INFORMATION FROM SEWER VIDEO INSPECTION		
SEWER ID S-MA40000855		
DISTANCE FROM MH ID S-MH40000722		
DISTANCE	DIAMETER	CLOCK
35.2	150	2
37.0	150	10
89.6	150	10
95.8	150	10

SEWER JUNCTION INFORMATION FROM SEWER VIDEO INSPECTION		
SEWER ID S-MA40000856		
DISTANCE FROM MH ID S-MH40000815		
DISTANCE	DIAMETER	CLOCK
48.5	150	10

METRIC

WHOLE NUMBERS INDICATE MILLIMETRES
DECIMALIZED NUMBERS INDICATE METRES



LOCATION APPROVED
UNDERGROUND STRUCTURES

SUPV. U/G STRUCTURES COMMITTEE DATE

NOTE:
LOCATION OF UNDERGROUND STRUCTURES AS
SHOWN ARE BASED ON THE BEST INFORMATION
AVAILABLE BUT NO GUARANTEE IS GIVEN THAT ALL
EXISTING UTILITIES ARE SHOWN OR THAT THE GIVEN
LOCATIONS ARE EXACT. CONFIRMATION OF
EXISTENCE AND EXACT LOCATION OF ALL
SERVICES MUST BE OBTAINED FROM THE INDIVIDUAL
UTILITIES BEFORE PROCEEDING WITH CONSTRUCTION.

B.M. ELEV.	CONSTRUCTION COMPLETION DATE: YYYY MM DD		
NO.	REVISIONS	DATE	BY

DESIGNED BY	SC	CHECKED BY	SC
DRAWN BY	JB	APPROVED BY	KZ
SCALE: HORIZONTAL VERTICAL	1: 750	RELEASED FOR CONSTRUCTION	
DATE	2012 08 20	DATE	

ENGINEER'S SEAL

ORIGINAL SIGNED BY
S.R.J. COURNOYER
AUG. 15, 2012

CONSULTANT DRAWING NUMBER
-



THE CITY OF WINNIPEG
WATER AND WASTE DEPARTMENT
ENGINEERING DIVISION

2012 SEWER RENEWALS
BY CIPP LINING
PENTLAND STREET
2ND MH N OF DOUGLAS AVENUE TO
TEE ON INTERCEPTOR DOUGLAS AVENUE (S)

SHEET 27 OF 36

CITY DRAWING NUMBER

10357

BID OPPORTUNITY: ??-????
CONTRACT NUMBER: ??

FILE PATH: R:\DRAWINGS\SEWER\2012_RENEWALS\CIPP, TPR, and EPR\CONTRACT 11\CIPP LINING\
FILE NAME: GILMORE_STUART_PENTLAND.dwg

PLOT DATE: 2012 08 20