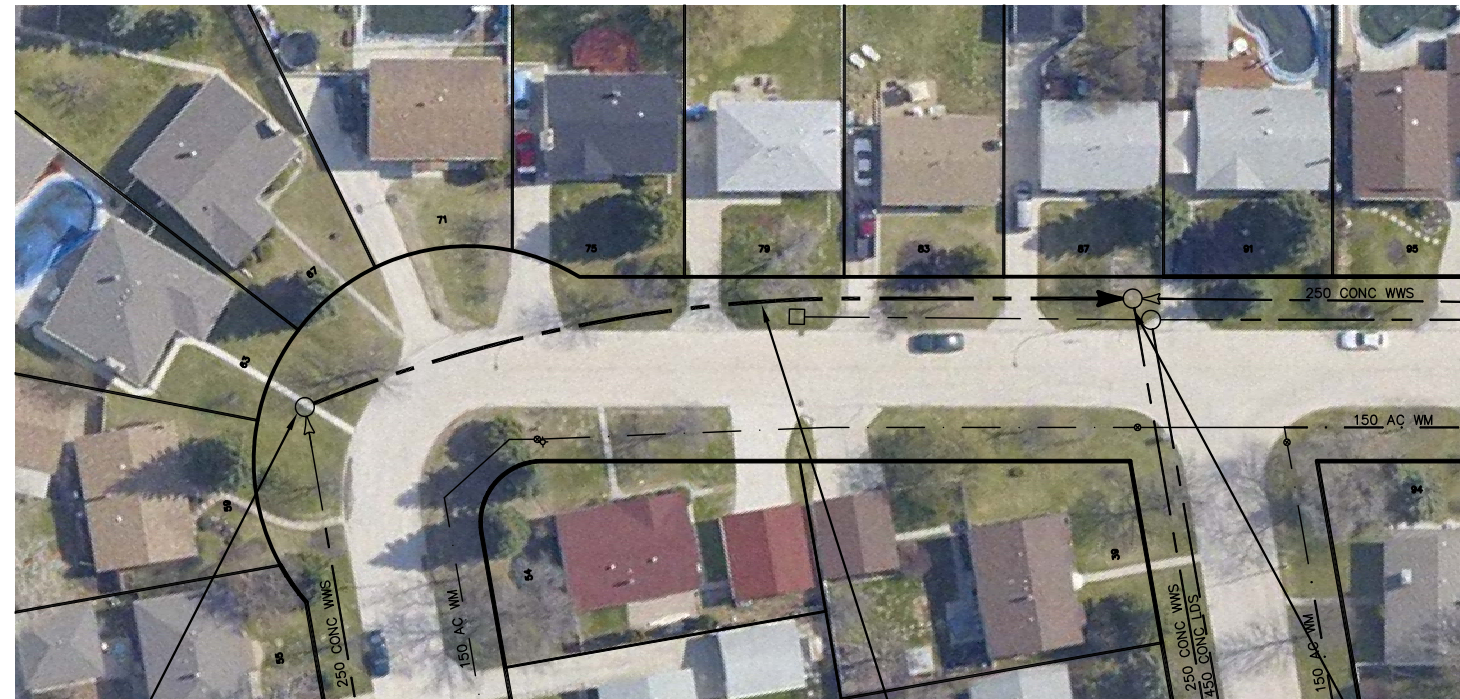
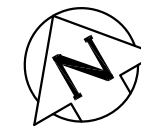


MORNINGMEAD WALK



S-MH40001055
RIM
INV E 226.55
INV S 227.17

**83.80 OF 250 CONC WWS TO BE
LINED S-MA40001164
(FULLY DETERIORATED)**

S-MH40001056
RIM
INV E 226.49
INV S 226.49
INV W 226.23

AUTUMNLEA PA

WARNING

IF POWER EQUIPMENT OR EXPLOSIVES ARE TO BE USED FOR EXCAVATION ON THIS PROJECT THE CONTRACTOR MUST:

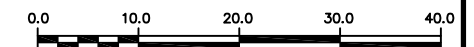
- 1) NOTIFY THE GAS COMPANY OF THE PROPOSED LOCATION OF EXCAVATION.
- 2) TAKE PRECAUTION TO AVOID DAMAGE TO GAS COMPANY INSTALLATIONS.

SEE PROVINCIAL REGULATION 210/72 FOR DETAILS

SEWER JUNCTION INFORMATION FROM SEWER VIDEO INSPECTION		
SEWER ID S-MA40001164		
DISTANCE FROM MH ID S-MH40001055		
DISTANCE	DIAMETER	CLOCK
2.0	150	9
11.0	150	9
17.1	150	10
30.8	150	9
47.6	150	9
64.3	150	9
79.6	150	10

METRIC

WHOLE NUMBERS INDICATE MILLIMETRES
DECIMALIZED NUMBERS INDICATE METRES



LOCATION APPROVED
UNDERGROUND STRUCTURES

SUPV. U/G STRUCTURES COMMITTEE DATE

NOTE:

LOCATION OF UNDERGROUND STRUCTURES AS SHOWN ARE BASED ON THE BEST INFORMATION AVAILABLE BUT NO GUARANTEE IS GIVEN THAT ALL EXISTING UTILITIES ARE SHOWN OR THAT THE GIVEN LOCATIONS ARE EXACT. CONFIRMATION OF EXISTENCE AND EXACT LOCATION OF ALL SERVICES MUST BE OBTAINED FROM THE INDIVIDUAL UTILITIES BEFORE PROCEEDING WITH CONSTRUCTION.

B.M. ELEV.			
CONSTRUCTION COMPLETION DATE: YYYY MM DD			
NO.	REVISIONS	DATE	BY

DESIGNED BY	SC	CHECKED BY	SC
DRAWN BY	JB	APPROVED BY	KZ
SCALE:		RELEASED FOR CONSTRUCTION	
HORIZONTAL	1:750		
VERTICAL			
DATE	2012 08 20	DATE	

ENGINEER'S SEAL

ORIGINAL SIGNED BY
S.R.J. COURNOYER
AUG. 15, 2012

CONSULTANT DRAWING NUMBER

—



THE CITY OF WINNIPEG
WATER AND WASTE DEPARTMENT
ENGINEERING DIVISION

2012 SEWER RENEWALS
BY CIPP LINING
MORNINGMEAD WALK
MH AT MORNINGMEAD WALK (W LEG) TO
MH AT AUTUMNLEA PATH

SHEET 26 OF 36

CITY DRAWING NUMBER

10356

PLOT DATE: 2012 08 20

BID OPPORTUNITY: ??-????
CONTRACT NUMBER: ??

FILE PATH: R:\DRAWINGS\SEWER\2012_RENEWALS\CIPP, TPR, and EPR\CONTRACT 11\CIPP LINING\
FILE NAME: MORNINGMEAD.dwg