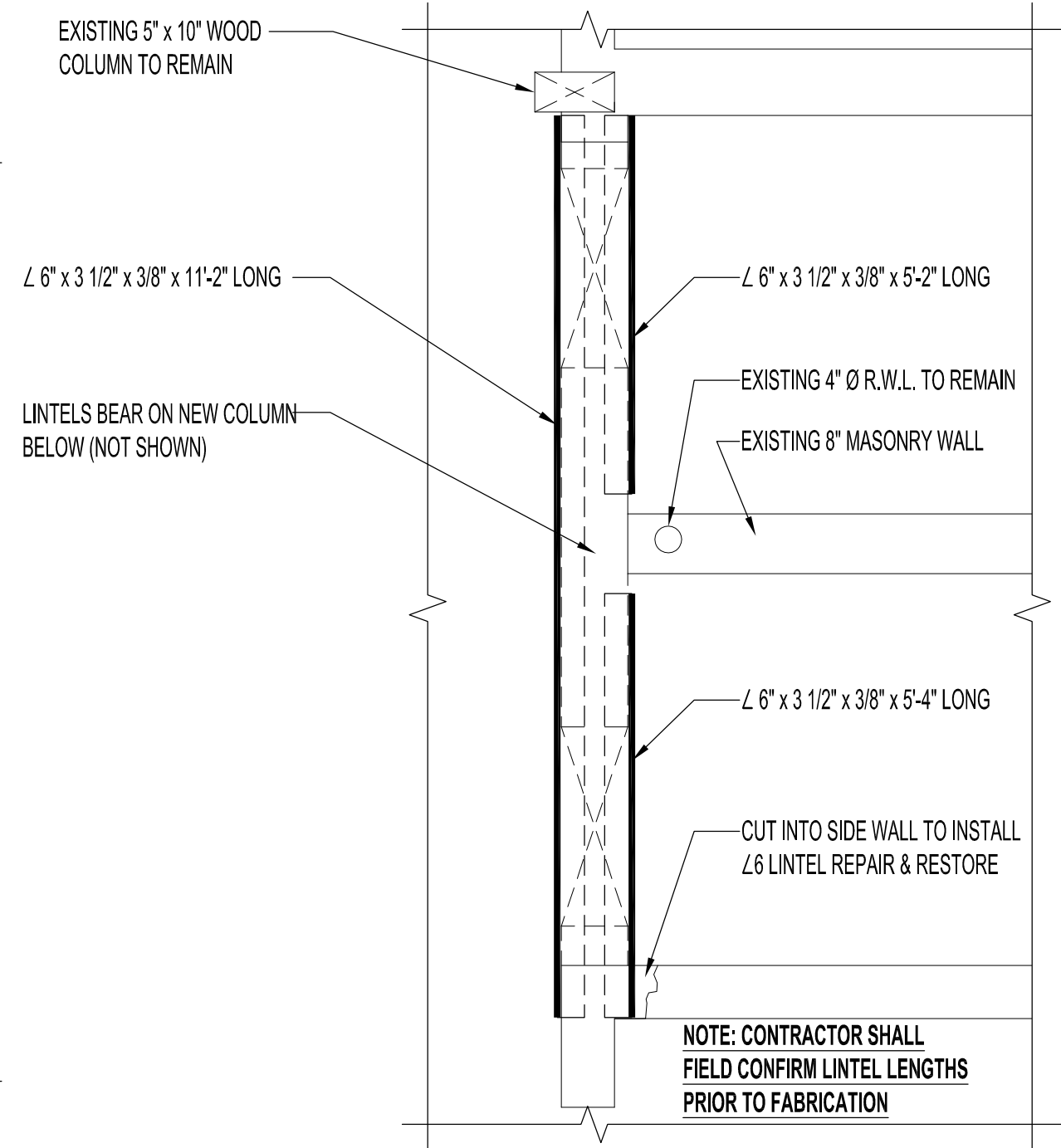


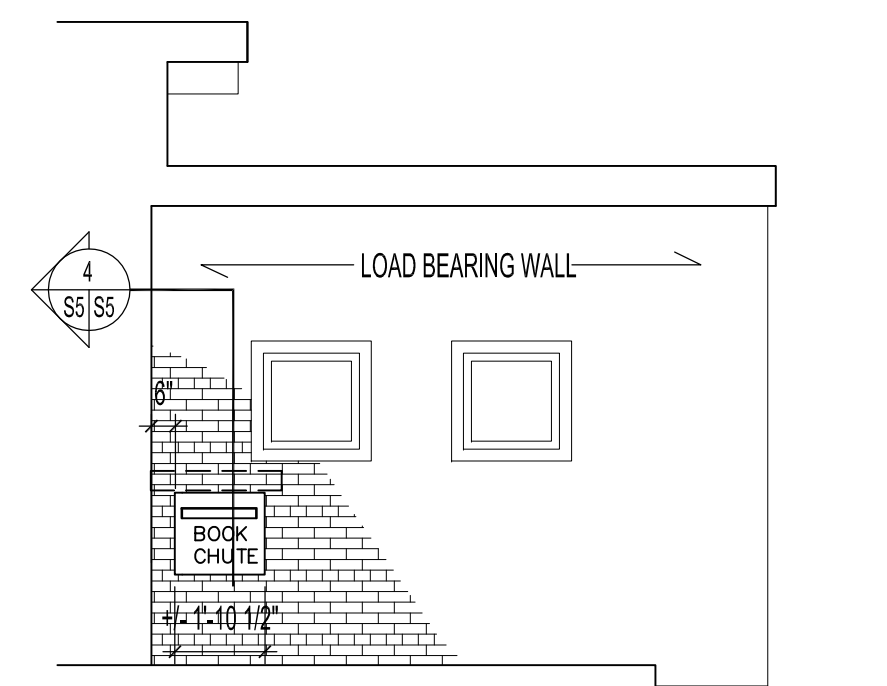
1 PARTIAL FLOOR PLAN - NEW & DEMOLISHED WALLS
SS | SS | SCALE: 1/8"=1'-0"



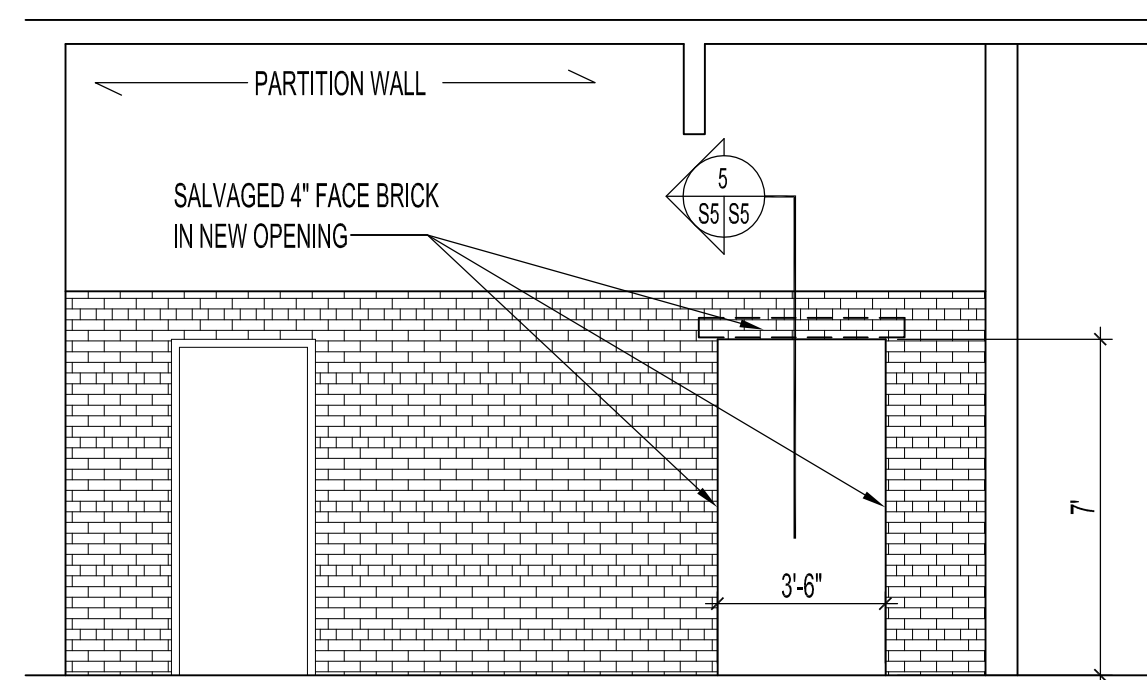
2 PLAN DETAIL - NEW LINTELS & COLUMN
SS | SS | SCALE: 1/2"=1'-0"

LINTEL DESIGN LOADS		
LOCATION	DEAD LOAD (PLF) *	LIVE LOAD (PLF) *
WASHROOMS	430	300
BOOK CHUTE	685	270
BOOK CHUTE DOORWAY	620	---

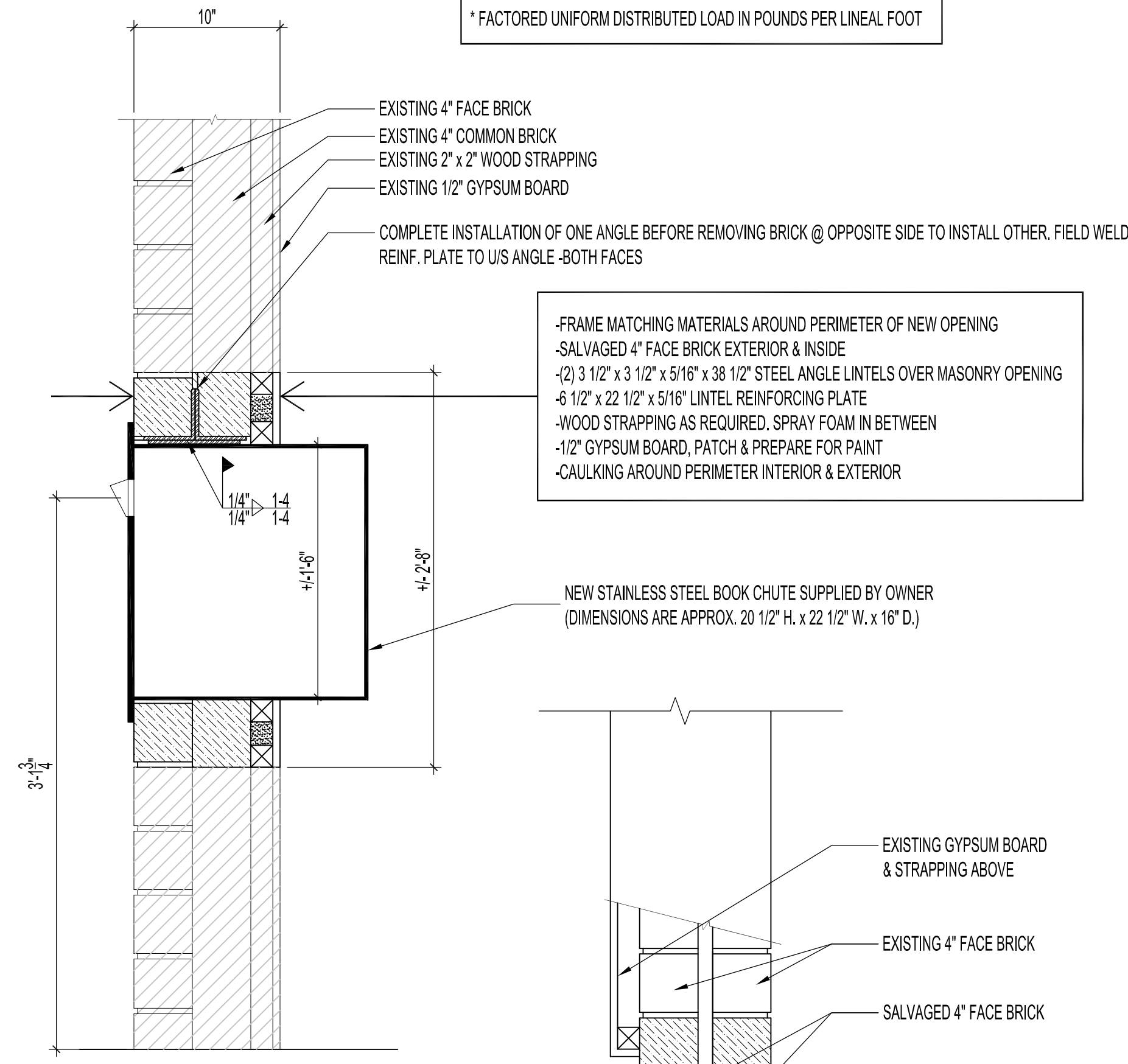
* FACTORED UNIFORM DISTRIBUTED LOAD IN POUNDS PER LINEAL FOOT



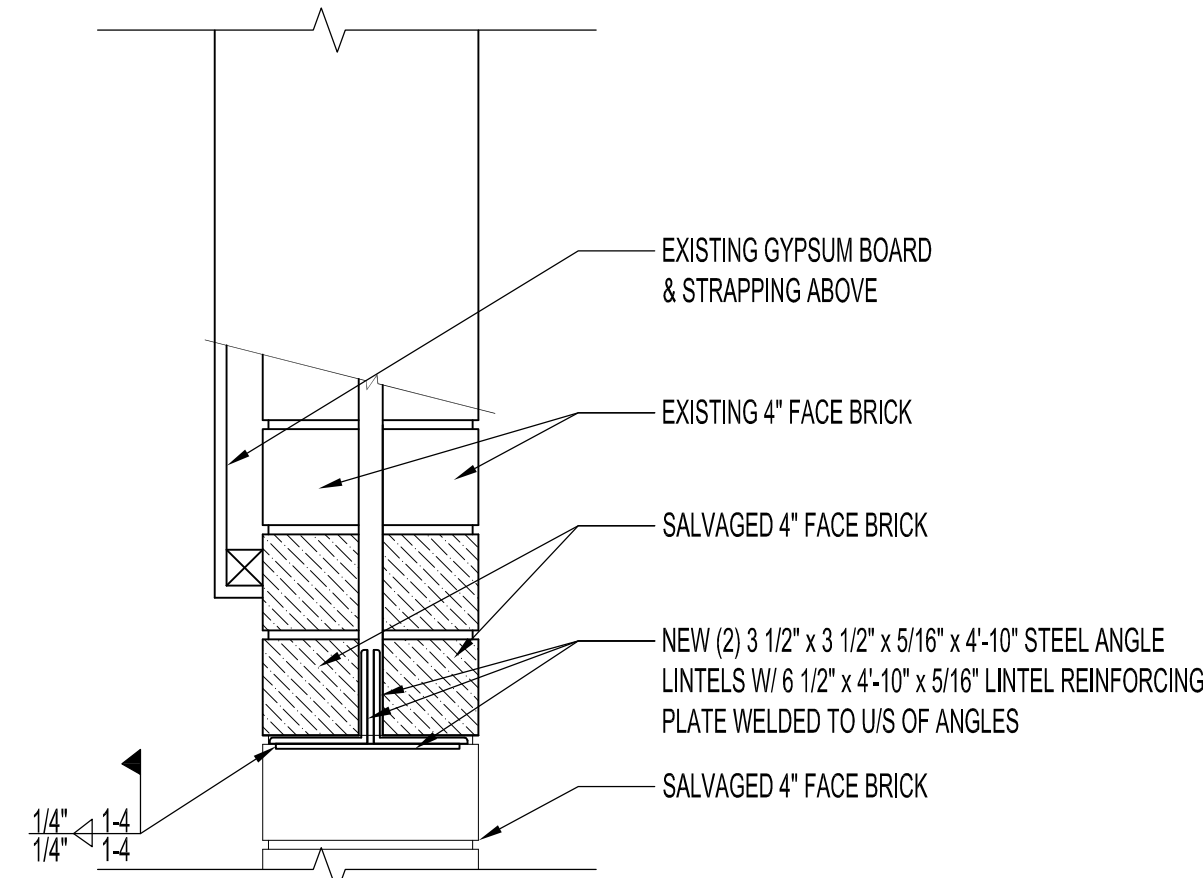
A ELEVATION - NEW OPENING FOR NEW BOOK CHUTE
SS | SS | SCALE: 1/4"=1'-0"



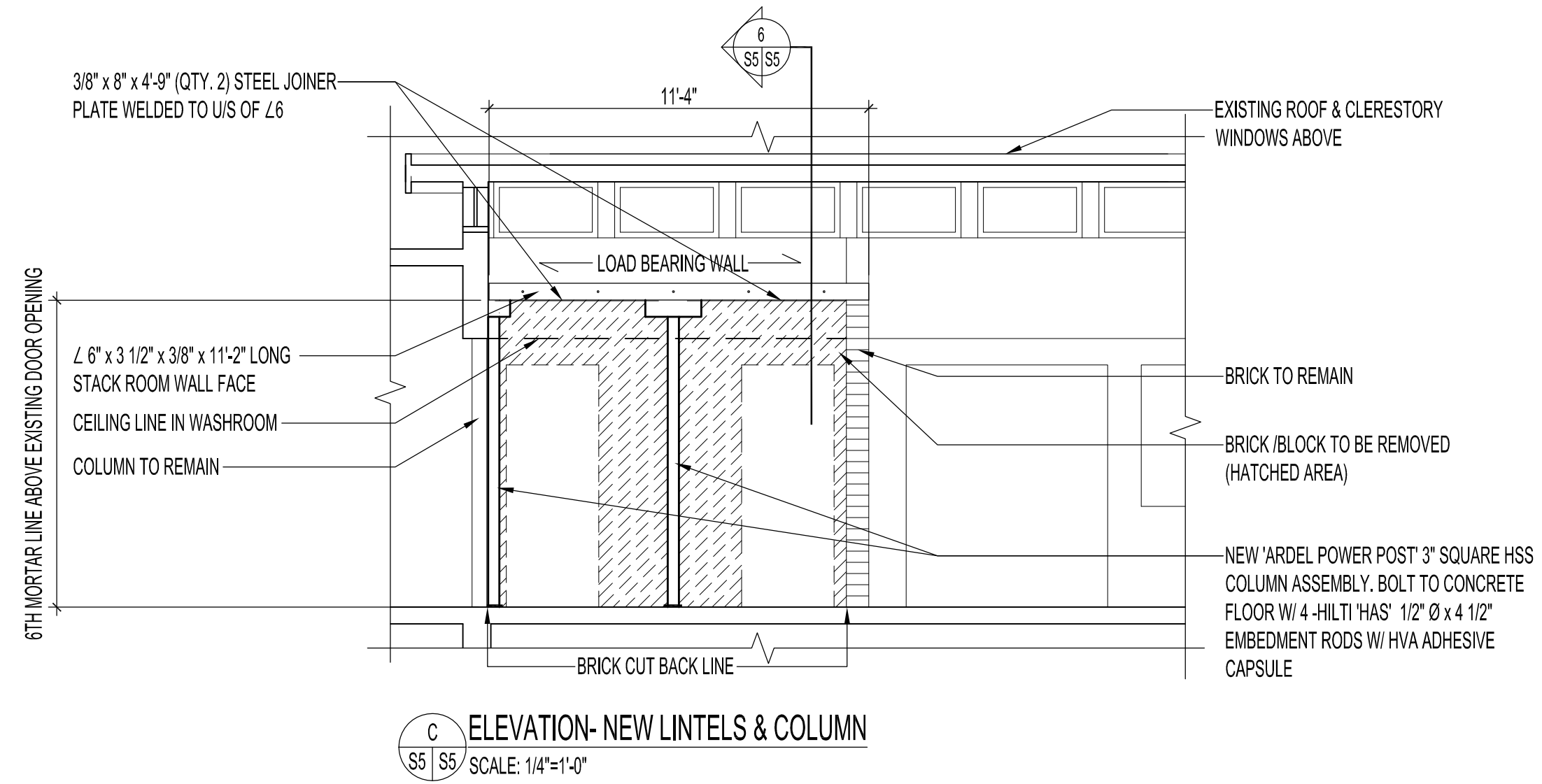
B ELEVATION - NEW WALL OPENING FOR NEW BOOK CHUTE ROOM
SS | SS | SCALE: 1/4"=1'-0"



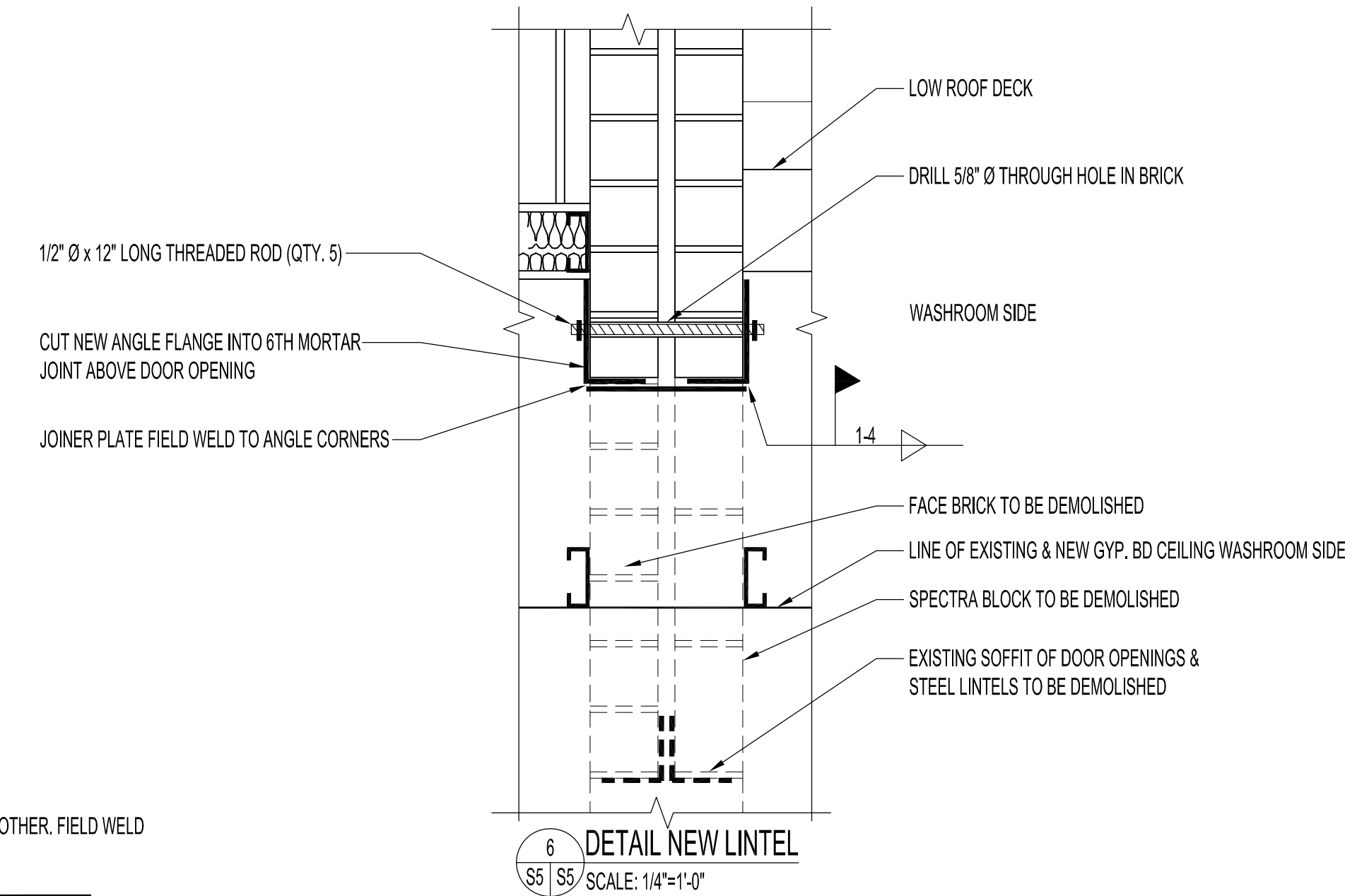
4 SECTION - BOOK CHUTE
SS | SS | SCALE: 1 1/2"=1'-0"



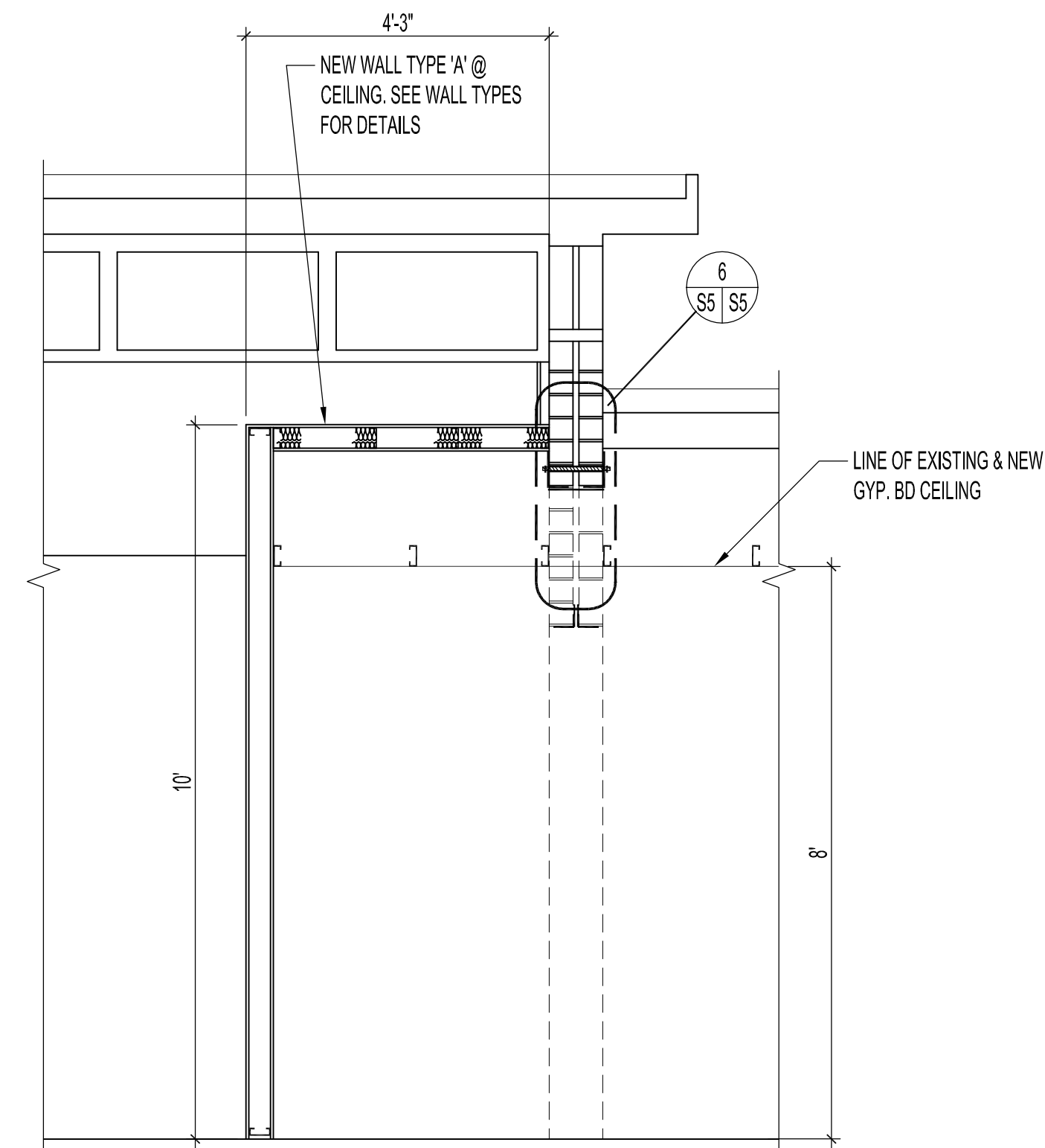
5 SECTION - HEADER OF WALL OPENING
SS | SS | SCALE: 1 1/2"=1'-0"



C ELEVATION - NEW LINTELS & COLUMN
SS | SS | SCALE: 1/4"=1'-0"



6 DETAIL NEW LINTEL
SS | SS | SCALE: 1/4"=1'-0"



3 SECTION @ WASHROOMS - NEW LINTELS & COLUMN
SS | SS | SCALE: 1/4"=1'-0"

NOTES:

INSTALLATION OF WASHROOM LINTELS

- INSTALLATION PROCEDURE MUST BE SEQUENCED AS FOLLOWS:
1. FIELD MARK AND DRILL THROUGH-BOLT HOLES INTO WALL FOR NEW LINTELS.
 2. INSTALL INSIDE-FACING LINTELS (2), ONE AT A TIME. REFER TO 'LINTEL FITTING PROCEDURE'.
 3. INSTALL OUTSIDE FACING LINTEL.
 4. FILL BOLT HOLES WITH EPOXY ADHESIVE AND INSTALL THROUGH-BOLTS. TIGHTEN BOLTS. ALLOW EPOXY TO SET.
 5. REMOVE BRICKWORK ABOVE EXISTING DOOR OPENINGS ONLY, TO UNDERSIDE OF NEW LINTEL.
 6. STITCH WELD JOINDER PLATE TO UNDERSIDE OF BOTH ANGLES, AT EACH DOOR LOCATION.
 7. INSTALL TEMPORARY SHORING POSTS (10 KIP CAPACITY LOCATION ADVISED BY CONTRACT ADMINISTRATOR) WITHIN FORMER DOOR OPENINGS.
 8. REMOVE BRICK END WALL AT EAST SIDE, CLEAR TO UNDERSIDE OF NEW LINTEL.
 9. FIT NEW 'ARDEL POWER POST' ASSEMBLY INTO POSITION.
 10. FIELD DRILL FLOOR SLAB AND INSTALL POST ANCHOR BOLTS.
 11. ADJUST POST TO BRING LINTELS INTO FULL BEARING.
 12. STITCH WELD LINTEL SEATS TO POST BEARING PLATE.
 13. REMOVE CENTRE BRICKWORK BETWEEN THE FORMER DOOR OPENINGS, CLEAR TO UNDERSIDE OF NEW LINTEL.
 14. REPEAT STEPS 9 THROUGH 12.
 15. REMOVE TEMPORARY SHORING POSTS.

NOTE: CONTRACTOR MAY ELECT TO SUBMIT ALTERNATE INSTALLATION METHOD FOR REVIEW BY CONTRACT ADMINISTRATOR.

LINTEL FITTING PROCEDURE (3 STEEL ANGLE LINTELS):

1. CUT RECESS INTO MORTAR JOINT TO REQUIRED DEPTH TO ACCEPT LINTEL FLANGE.
2. TRIM LOWER EDGE OF BRICK COURSE ABOVE RECESS TO ACCEPT THE FILLET WITHIN INNER CORNER OF STEEL ANGLE.
3. PLACE GROUT INTO RECESS PRIOR TO INSTALLING LINTEL. ALLOW GROUT TO SET BEFORE INSTALLING SUBSEQUENT LINTELS.

ORIGINAL STAMPED BY: B.C.PINIUTA, P. ENG.
DATE: 2012.08.24

No.	REVISION/DESCRIPTION	BY	DATE

DRAWN	CHKD	CHECKED	DESIGNED	APPROVED
DATE: 2012.07.24				

THE CITY OF WINNIPEG
PLANNING, PROPERTY AND DEVELOPMENT DEPARTMENT
MUNICIPAL ACCOMMODATIONS DIVISION
3-65 GARRY STREET, R3C 4K4

PROJECT
FORT GARRY LIBRARY
INTERIOR & EXTERIOR REFURBISHING DESIGN
1360 PEMBINA HIGHWAY

SHEET TITLE
PARTIAL FLOOR PLAN
ELEVATIONS & SECTIONS,
LINTEL DETAILS

SCALE	PROJECT No:	SHEET No:
AS SHOWN	2011-096	S5