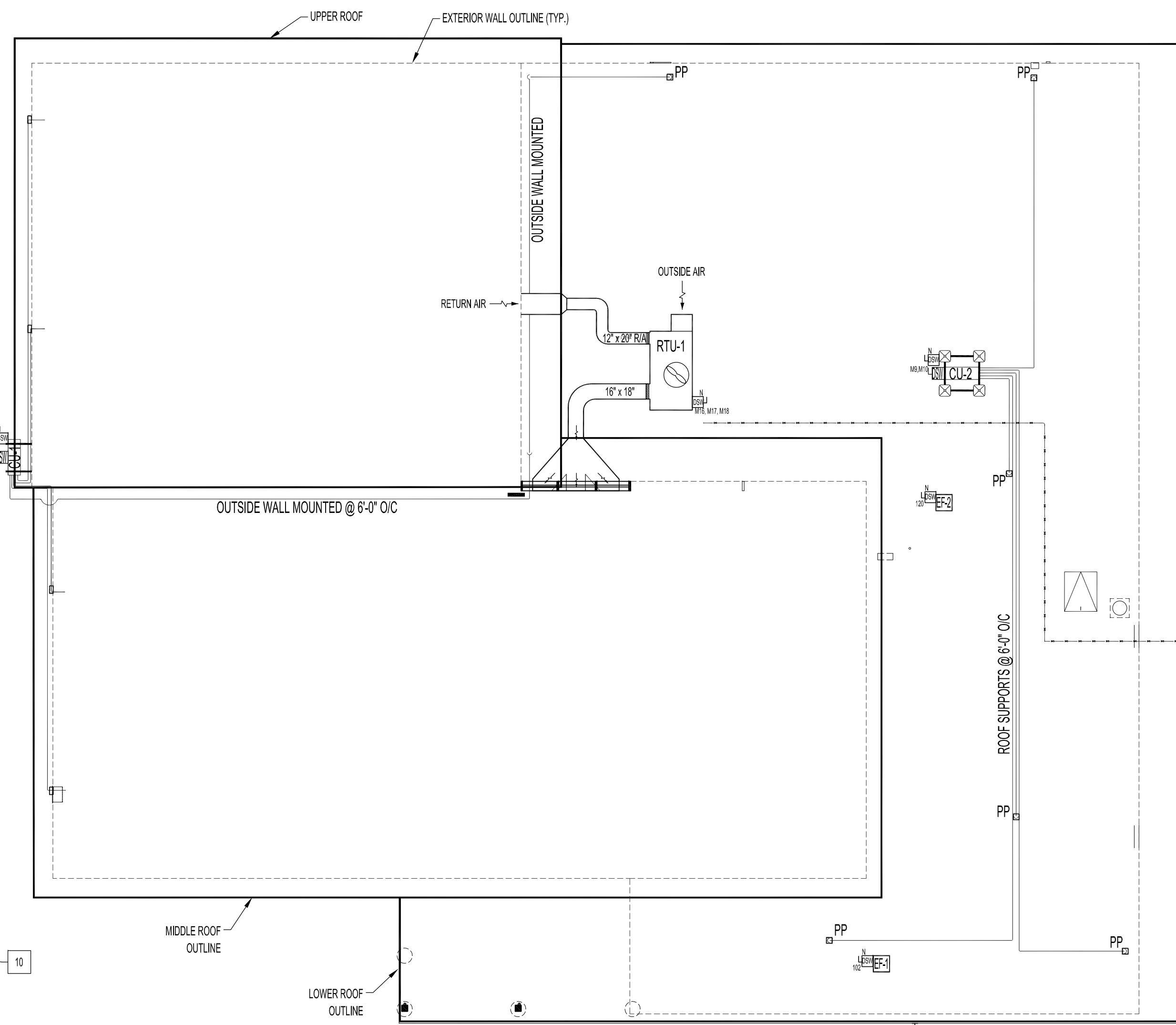
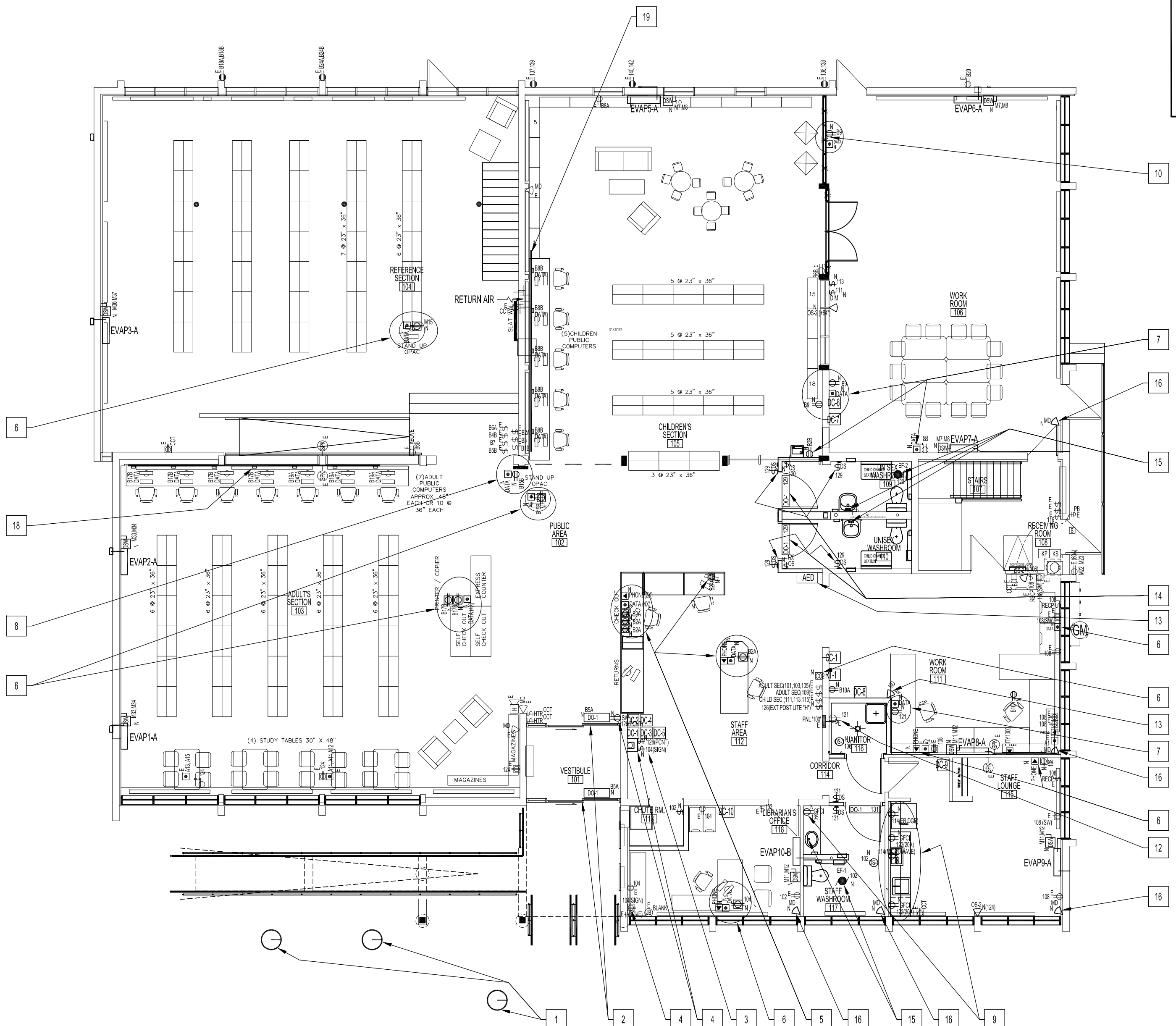


**BASEMENT FLOOR PLAN - RENOVATION  
POWER, DATA AND COMMUNICATION**  
SCALE: 1/8"=1'-0"



NOTES:  
SEE NOTES ON SHEET E1.



**MAIN FLOOR PLAN - RENOVATION - POWER, DATA AND COMMUNICATION**  
SCALE: 1/8"=1'-0"  
NOTE: ROOF DECK MOUNTED JUNCTION BOXES & LUMINAIRES ARE SHOWN ON LIGHTING RENOVATION DRAWING

**ROOF PLAN - RENOVATION - POWER, DATA AND COMMUNICATION**  
SCALE: 1/8"=1'-0"

**RENOVATION NOTES - POWER, DATA & COMMUNICATION**

- "N" INDICATES NEW
- "E" INDICATES EXISTING
- \* INDICATES ALL CONDUITS SHALL BE INSTALLED ON THE EXTERIOR SIDE OF THE ROOF DECK TERMINATING TO 5" DEEP OCTAGONAL BOX. SEE DRAWING E4, TYPICAL WOOD DECK CEILING OUTLET BOX INSTALLATION DETAIL.
- 1. EXTERIOR LUMINAIRES WITH 12 FOOT STEEL POLES  
SUPPLY & INSTALL THREE (3) EXTERIOR LUMINAIRES WITH 12 FOOT STEEL POLES. 120V. USE LUMINAIRE SCHEDULE. REFER TO ARCHITECTURAL DRAWING FOR LOCATIONS. INSTALL ALL UNDERGROUND WIRING IN TO LUMINAIRES ON A SEPARATE (SUPPLY & INSTALL) 15 AMP CIRCUIT BREAKER FROM THE BASEMENT MAIN "M" ELECTRICAL PANEL. SUPPLY & INSTALL SINGLE WALL SWITCH TO ACTIVATE ALL THREE (3) LUMINAIRES FROM STAFF AREA 112. SEE RENOVATION DRAWING.
- 2. AUTOMATIC SINGLE SLIDING DOOR  
SUPPLY & INSTALL TWO (2) NEW AUTOMATIC SINGLE SLIDING DOOR WITH ELECTRIC LINEAR DRIVE OPERATOR (HORTON PROFLER SERIES 200). SEE ARCHITECTURAL DOOR SCHEDULE. WORK TO INCLUDE COMPLETE AUTOMATIC ALUMINUM DOOR SYSTEM AS SPECIFIED, THAT HAS BEEN MANUFACTURED, FABRICATED AND INSTALLED TO MAINTAIN PERFORMANCE CRITERIA STATED BY MANUFACTURER WITHOUT DEFECTS, DAMAGE OR FAILURE.  
SUPPLY & INSTALL ALL CONCEALED WIRING TO OPERATOR ON A SEPARATE CIRCUIT BREAKER ROUTED INTO HEADER, INCLUDING INSTALLING ALL NECESSARY POWER & LOW VOLTAGE WIRING FOR PROPER OPERATION OF ASSOCIATED SECURITY SYSTEMS. PROVIDE 120VAC, 60 CYCLE, SINGLE-PHASE, 15 AMP SERVICE (ALL MAIN FLOOR WIRING SHALL BE CONCEALED. BASEMENT WIRING IN CONDUIT) TO EACH UNIT ON DEDICATED 20 AMP CIRCUIT BREAKER ROUTED TO HEADER. MAXIMUM CURRENT DRAW IS 3.15 AMPS.
- 3. SUPPLY & INSTALL SWITCH DUPLEX RECEPTACLE FOR PEOPLE COUNTER (BY OTHERS). SWITCH LOCATION SHALL BE ON NEW WALL, STAFF AREA 112, AS SHOWN.
- 4. SUPPLY & INSTALL SWITCH DUPLEX RECEPTACLE FOR SIGN (BY OTHERS). SWITCH LOCATION SHALL BE ON NEW WALL, STAFF AREA 112, AS SHOWN. IF POSSIBLE, UTILIZE EXISTING DUPLEX RECEPTACLE CIRCUIT IN OFFICE, AS SHOWN.
- 5. SUPPLY & INSTALL POWER, DATA & OR COMMUNICATION COMPONENTS & WIRING 24" AFF ONTO NEW WOODWORK TO CIRCUITS OR PORTS SHOWN. ALL WIRING ONTO WOOD WORK SHALL BE CONCEALED IN LEGRAND WIREMOLD SERIES 2411DFD WITH ONE-GANG DEVICE BOX C2444D-FW TO ACCOMMODATE TRANSFORMER PLUGS. COLOUR: FOG WHITE.
- 6. SUPPLY & INSTALL CARBON DIOXIDE (CO2) TRANSMITTER SENSOR 48" AFF. QEL MODEL CTS4020 WITH POWER SUPPLY. CONNECT TO RTU-1. SEE ELECTRICAL DRAWING E9 FOR SEQUENCE OF OPERATION.
- 7. SUPPLY & INSTALL IN-WALL POWER, DATA & OR COMMUNICATION COMPONENTS & WIRING TO CIRCUITS OR PORTS SHOWN 18" AFF TO CENTERLINE OF DEVICE. NOTE: ONE-GANG DEVICE BOX AND MULTI-GANG DEVICE BOXES. ALL WIRING SHALL BE CONCEALED ON THE MAIN FLOOR OR MEZZANINE FLOOR. BASEMENT POWER WIRING SHALL BE IN CONDUIT.
- 8. SUPPLY & INSTALL IN-WALL POWER & OR DATA COMPONENTS & WIRING TO CIRCUITS OR PORTS SHOWN 84" AFF TO CENTERLINE OF DEVICE. NOTE: ONE-GANG DEVICE BOX AND MULTI-GANG DEVICE BOXES. ALL WIRING SHALL BE CONCEALED ON THE MAIN FLOOR. BASEMENT POWER WIRING IN CONDUIT. EXACT LOCATIONS TO BE DETERMINED.
- 9. SUPPLY & INSTALL IN-WALL POWER & OR DATA COMPONENTS & WIRING TO CIRCUITS OR PORTS SHOWN 9" ABOVE FINISH COUNTER TOP TO CENTERLINE OF DEVICE. NOTE: USE ONE-GANG DEVICE BOX OR MULTI-GANG DEVICE BOXES AS SHOWN. ALL WIRING SHALL BE CONCEALED ON THE MAIN FLOOR. BASEMENT POWER WIRING IN CONDUIT. EXACT LOCATIONS TO BE DETERMINED.
- 10. SUPPLY & INSTALL BASE POWER & OR DATA COMPONENTS & WIRING TO CIRCUITS OR PORTS SHOWN. NOTE: ONE-GANG DEVICE BOX AND MULTI-GANG DEVICE BOXES. ALL WIRING SHALL BE CONCEALED ON THE MAIN FLOOR. BASEMENT POWER WIRING IN CONDUIT. EXACT LOCATIONS TO BE DETERMINED.
- 11. SUPPLY & INSTALL CEILING MOUNT JUNCTION BOX & SINGLE-CHANNEL RACEWAY (LEGRAND WIREMOLD SERIES 500, COLOUR TO MATCH CEILING ROOF DECK) TO BE PRE-WIRED TO EXISTING LIGHT SWITCH BAG. SEE ELECTRICAL LIGHTING RENOVATION. FOR FUTURE LIVING WALL LUMINAIRES. LOCATION SHALL BE AS CLOSE AS POSSIBLE TO CORNER OF CEILING AND WALL. WIRING TO LIGHT SWITCH BAG SHALL BE CONCEALED.
- 12. REPLACE EXISTING DUPLEX WITH 15 AMP GFCI RECEPTACLE WITH NEW FACEPLATE.
- 13. RELOCATED COMPONENTS FROM DEMOLITION DRAWING.

- 14. AUTOMATIC DOORS FOR WASHROOMS  
SUPPLY & INSTALL LOW ENERGY POWER DOOR OPERATOR, NORTON ASSA-BLOY MODEL 6910, 689 SET-UP FOR "PUSH AND GO" WITH HES 5000 SERIES ELECTRIC STRIKE FIELD SET TO FAIL-SAFE. 630 SATIN STAINLESS STEEL FINISH. CAMDEN 38" PUSH PLATE SWITCH WITH "PUSH TO OPEN" & WHEELCHAIR SYMBOL. CLEAR ANODIZED FINISH. CAMDEN MODEL CMA75364. CAMDEN CX-41C1 KIT INCLUDES CX-22 DUAL FUNCTION RELAY, CM-4018 "PUSH TO LOCK" PUSH BUTTON (8" BESIDE INSIDE WIR. 38" PUSH PLATE SWITCH AT 38" AFF), CM-33 OVAL "OCCUPIED WHEN LIT" ILLUMINATION SIGN (8" AFF OF CORNER WALL) & CM-63C SURFACE MOUNT DOOR CONTACTS.  
SUPPLY & INSTALL ALL CONCEALED WIRING TO OPERATOR ON A SEPARATE 15-AMP CIRCUIT BREAKER ROUTED INTO HEADER, INCLUDING INSTALLING ALL NECESSARY POWER & LOW VOLTAGE WIRING & COMPONENTS. INSTALL CAMDEN CX-22 CONTROLLER INSIDE DOOR OPERATOR UNIT OR SUPPLY & INSTALL PANEL BOX WITH ACCESS DOOR TO HOUSE CAMDEN CX-22 CONTROLLER.
- SEQUENCE OF OPERATION  
SET CAMDEN CX-22 RESTROOM DOOR CONTROLLER (BIDIRECTIONAL DOOR SEQUENCER) TO APPLICATION MODE 1. (BARRIER-FREE DOOR OPERATOR ON A SINGLE-USE OCCUPANT RESTROOM). ACTIVATE 38" PUSH PLATE TO GAIN ACCESS TO INSIDE WASHROOM. ONCE INSIDE WASHROOM, THE USER PRESSES THE "PUSH TO LOCK" SWITCH, WHICH SIGNALS THE RELAY TO LOCK THE DOOR, & DISABLES THE EXTERIOR 38" PUSH PLATE. EXITING CAN BE DONE MANUALLY, VIA THE LEVER HANDLE SET, OR BY PRESSING THE INTERIOR WALL SWITCH, THEREBY RESETTING THE CONTROLLER.
- 15. ROOF EXHAUST FANS & ELECTRONIC FAUCETS FOR WASHROOMS  
SUPPLY & INSTALL ROOF EXHAUST FANS PER "HVAC SCHEDULE" IN MECHANICAL RENOVATION DRAWING.  
INTERCONNECT ROOF EXHAUST FANS TO FIRE ALARM SYSTEM TO SHUT-DOWN IN THE EVENT OF A FIRE ALARM.  
INTERCONNECT STAFF WASHROOM ROOF EXHAUST FAN TO CEILING MOUNT OCCUPANCY SENSOR & RELAY (SUPPLY & INSTALL) TO TIMER (SUPPLY & INSTALL) TO OPERATE 5 TO 15 MINUTES AFTER OCCUPANCY IS NOT DETECTED. CONNECT ELECTRONIC FAUCET TRANSFORMER PER "PLUMBING SCHEDULE" IN PLUMBING DEMOLITION AND RENOVATION DRAWING TO SAME CIRCUIT AS ROOF EXHAUST FAN.  
INTERCONNECT UNISEX WASHROOMS' ROOF EXHAUST FAN TO LIGHT SWITCH OCCUPANCY SENSORS & RELAY (SUPPLY & INSTALL) TO TIMER (SUPPLY & INSTALL) TO OPERATE 5 TO 15 MINUTES AFTER OCCUPANCY IS NOT DETECTED IN BOTH WASHROOMS. CONNECT ELECTRONIC FAUCET TRANSFORMER PER "PLUMBING SCHEDULE" IN PLUMBING DEMOLITION AND RENOVATION DRAWING TO SAME CIRCUIT AS ROOF EXHAUST FAN.
- 16. SUPPLY & INSTALL NEW SECURITY MOTION DETECTORS AS SHOWN. CONNECT TO EXISTING SYSTEM. ALL WIRING TO BE CONCEALED. NO CONDUITS OR RACEWAYS. MOUNTING HEIGHT SHALL BE MINIMUM OF 8 FEET AFF.
- 17. SUPPLY & INSTALL 30 FEET LEGRAND 24000 SERIES RACEWAY WITH (7) (2444D-2A) TWO-GANG DIVIDED DEVICE BOX SPACED AT 4 FEET EACH WITH A DUPLEX 120V RECEPTACLE AND (2) R45 PORTS. COMPLETE WITH FACEPLATES. (2415DFD) RADIOUS DIVIDED TEE & END CAPS. COLOUR TO BE FOG WHITE. TO BE MOUNTED 51" AFF AS SHOWN. ALL WIRING SHALL BE CONCEALED ON THE MEZZANINE & MAIN FLOOR. CRAWLSPACE POWER WIRING IN CONDUIT. (2) CIRCUITS
- 18. SUPPLY & INSTALL 25 FEET LEGRAND 24000 SERIES RACEWAY WITH (7) (2444D-2A) TWO-GANG DIVIDED DEVICE BOX SPACED AT 4 FEET EACH WITH A DUPLEX 120V RECEPTACLE AND (2) R45 PORTS. COMPLETE WITH FACEPLATES. (2415DFD) RADIOUS DIVIDED TEE & END CAPS. COLOUR TO BE FOG WHITE. TO BE MOUNTED 38" AFF AS SHOWN. ALL WIRING SHALL BE CONCEALED ON THE MAIN FLOOR. CRAWLSPACE POWER WIRING IN CONDUIT. (2) CIRCUITS
- 19. SUPPLY & INSTALL 20 FEET LEGRAND 24000 SERIES RACEWAY WITH (7) (2444D-2A) TWO-GANG DIVIDED DEVICE BOX SPACED AT 4 FEET EACH WITH A DUPLEX 120V RECEPTACLE AND (2) R45 PORTS. COMPLETE WITH FACEPLATES. (2415DFD) RADIOUS DIVIDED TEE & END CAPS. COLOUR TO BE FOG WHITE. TO BE MOUNTED 38" AFF AS SHOWN. ALL WIRING SHALL BE CONCEALED ON THE MAIN FLOOR. CRAWLSPACE POWER WIRING IN CONDUIT. (2) CIRCUITS
- 20. SUPPLY & INSTALL NEW SURFACE MOUNTED DUPLEX RECEPTACLES TO PANEL "B" CIRCUIT 12A, MOUNT 18" AFF.
- 21. SUPPLY & INSTALL NEW CEILING MOUNT CARBON MONOXIDE DETECTOR IN BASEMENT BOILER ROOM PER BUILDING CODE. WIRE TO FIRE ALARM SYSTEM.

No.	REVISION/DESCRIPTION	BY	DATE
SEAL			

DRAWN	DTA	CHECKED	DESIGNED	DTA	APPROVED
DATE	2012.09.07	USER	APPROVAL		

**THE CITY OF WINNIPEG**  
PLANNING, PROPERTY AND  
DEVELOPMENT DEPARTMENT  
MUNICIPAL ACCOMMODATIONS DIVISION  
3-65 GARRY STREET, R3C 4K4

PROJECT  
**FORT GARRY LIBRARY**  
INTERIOR & EXTERIOR REFURBISHING

1360 PEMBINA HWY  
SHEET TITLE  
**ROOF, MEZZANINE, MAIN AND BASEMENT  
FLOOR PLANS - RENOVATION  
POWER, DATA AND COMMUNICATION**

SCALE	PROJECT No:	SHEET No:
AS SHOWN	2011-096-01	E2