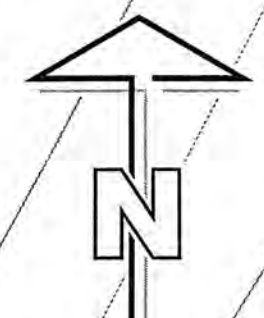
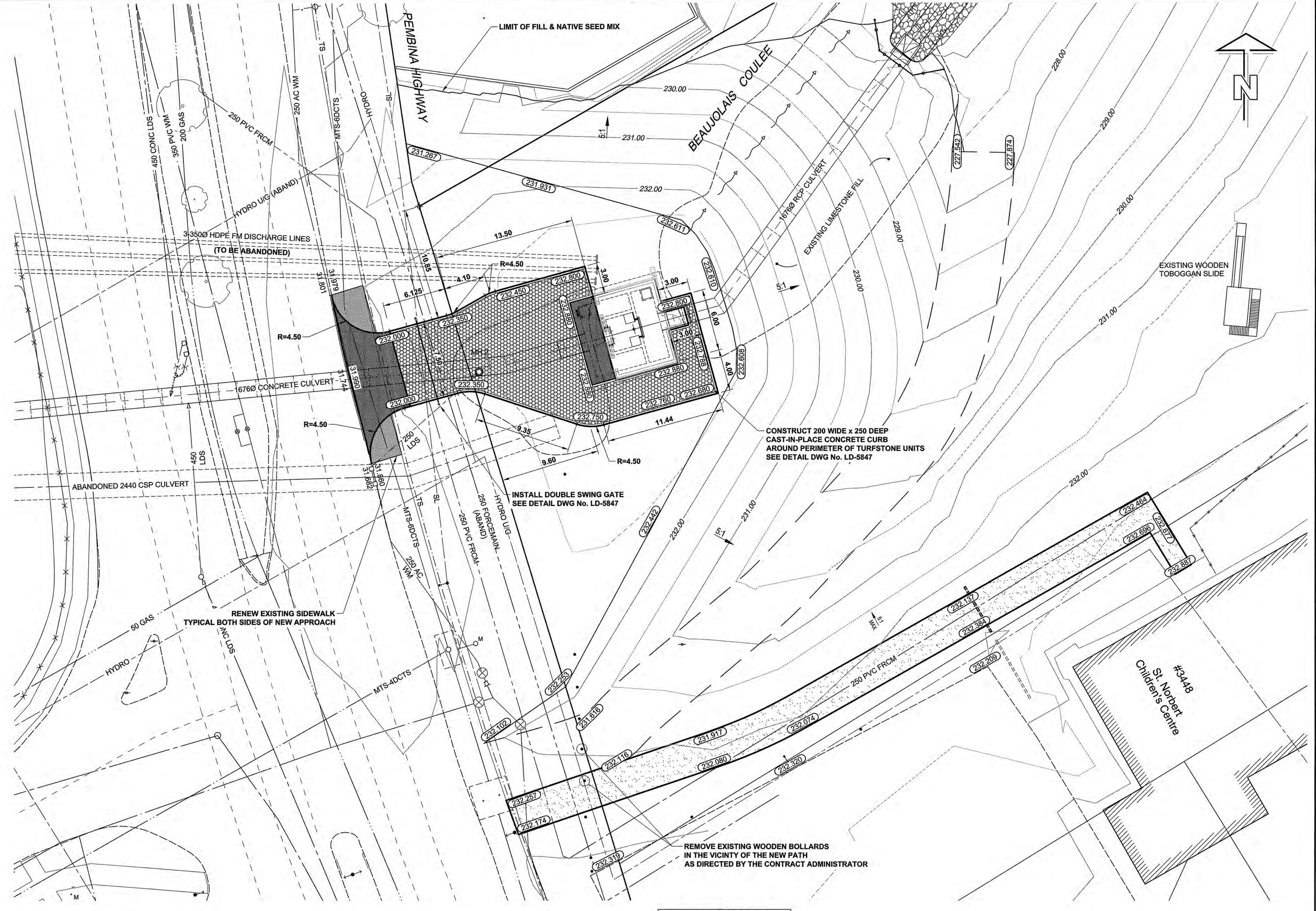


D SIZE 22" x 34" (559mm x 864mm)

PLOT: 12/07/27 10:36:35 AM

AECOM REVIEW DRAFT CHK
AECOM FILE NAME: 60221826-02-C-101-R0X.dwg Saved By: cooperkl

FLOOD CONTROL SUB-STRUCTURE COORDINATE TABLE		
POINT	NORTHING	EASTING
NORTHWEST EXTERIOR CORNER OF BUILDING	5514576.9753	632772.3453
NORTHEAST EXTERIOR CORNER OF BUILDING	5514579.2337	632780.5398
SOUTHWEST EXTERIOR CORNER OF BUILDING	5514569.0700	632774.5239
SOUTHEAST EXTERIOR CORNER OF BUILDING	5514571.3284	632782.7184



APEGM
Certificate of Authorization
AECOM Canada Ltd.
No. 4671 Date: July 27, 2012

METRIC
WHOLE NUMBERS INDICATE MILLIMETRES
DECIMALIZED NUMBERS INDICATE METRES

BID OPPORTUNITY NO.587-2012

EXISTING	LEGEND - PLAN	NEW	EXISTING	LEGEND - PLAN	NEW	EXISTING	LEGEND - PROFILE	NEW
150 WM	WATERMAIN	150 WM	♂	CURB STOP	♂	150 WM	WATERMAIN	150 WM
⊕	HYDRANT	⊕	⊕	REDUCER	⊕	300 LDS	LAND DRAINAGE SEWER	300 LDS
⊙	VALVE	⊙	⊕	COUPLING	⊕	250 WWS	WASTE WATER SEWER	250 WWS
300 LDS	LAND DRAINAGE SEWER	300 LDS	---	HYDRO	---	---	PAVEMENT CROWN	---
250 WWS	WASTE WATER SEWER	250 WWS	---	MTS	---	---	GROUNDLINE	---
○	MANHOLE	●	---	GAS	---	---	---	---
□	CATCH BASIN	■	---	ASPHALT	---	---	---	---
△	CURB INLET	▲	---	CONCRETE	---	---	---	---
---	CULVERT	---	---	LIP CURB	---	---	---	---
---	COMMUNITY MAILBOX	---	---	MODIFIED BARRIER CURB	---	---	---	---
---	SURVEY BAR	---	---	RAMP CURB	---	---	---	---

LOCATION APPROVED
UNDERGROUND STRUCTURES

DATE: 12/07/27

NOTE: LOCATION OF UNDERGROUND STRUCTURES AS SHOWN ARE BASED ON THE BEST INFORMATION AVAILABLE. BUT NO GUARANTEE IS GIVEN THAT ALL EXISTING UTILITIES ARE SHOWN OR THAT THE GIVEN LOCATIONS ARE EXACT. CONFIRMATION OF EXISTENCE AND EXACT LOCATION OF ALL SERVICES MUST BE OBTAINED FROM THE INDIVIDUAL UTILITIES BEFORE PROCEEDING WITH CONSTRUCTION.

NO.	ISSUED FOR CONSTRUCTION	DATE	BY
0	ISSUED FOR CONSTRUCTION	12/07/27	WJd/KLC
NO.	REVISIONS	YYMMDD	BY

DESIGNED BY	JAT	CHECKED BY	JT.
DRAWN BY	WJd	APPROVED BY	[Signature]
HOR. SCALE	1:200	RELEASED FOR CONSTRUCTION	
VERT. SCALE		DATE	12/07/30

PROFESSIONAL'S SEAL
PROVINCE OF MANITOBA
A. NAGY
July 27, 2012
REGISTERED PROFESSIONAL ENGINEER
CONSULTANT DRAWING NO.
60221826-02-C-101-R0X.dwg

THE CITY OF WINNIPEG
WATER & WASTE DEPARTMENT

CONSTRUCTION OF FLOOD CONTROL STRUCTURE AT PEMBINA HIGHWAY & BEAUJOLAIS COULEE

CIVIL
DETAILED SITE PLAN
LAYOUT & GRADING

SHEET 2 OF 19
CITY DRAWING NUMBER
LD-5841
REV 0