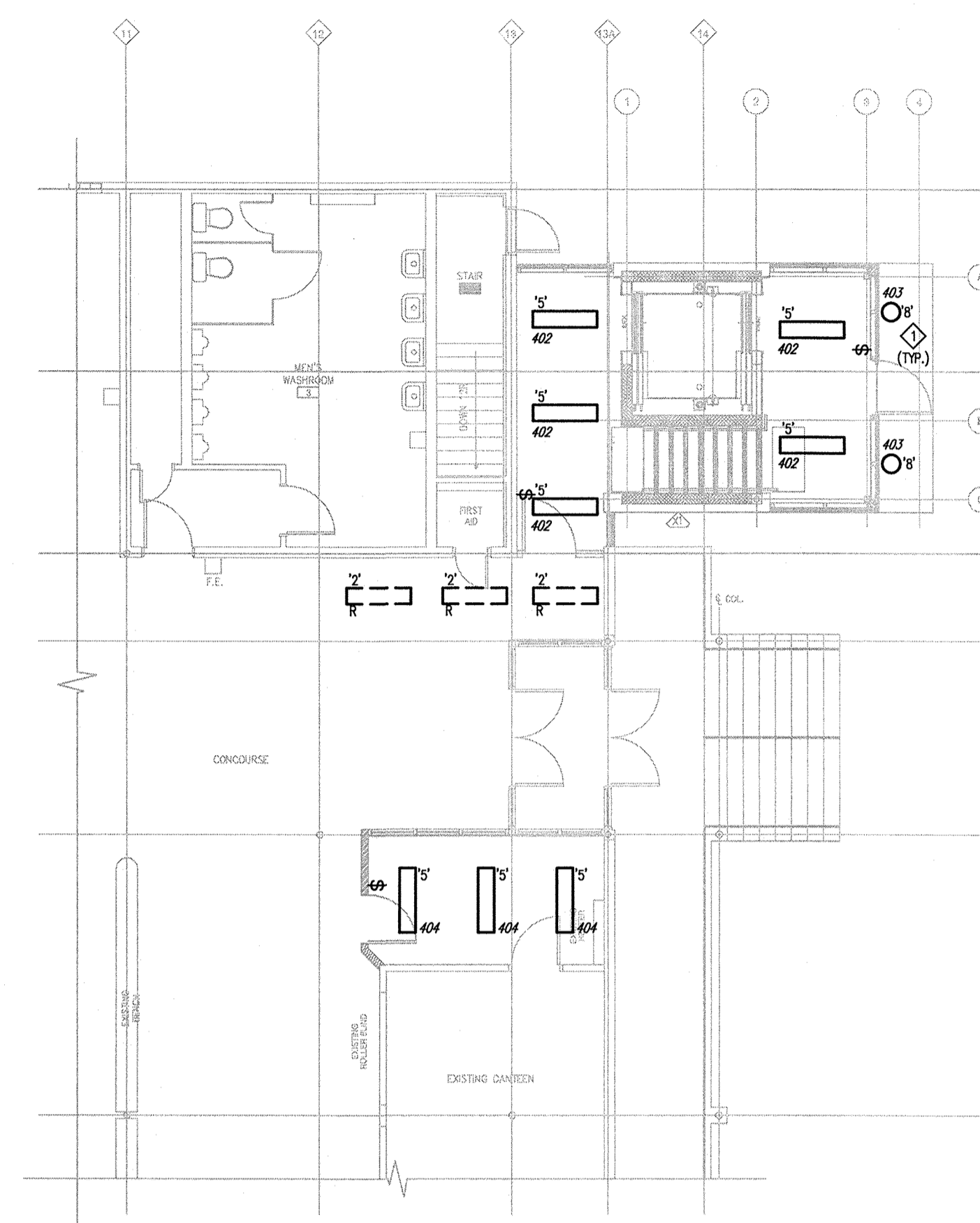


1 BASEMENT LIGHTING RENOVATION LAYOUT
 EL2.0 SCALE: 1:100



2 MAIN FLOOR LIGHTING RENOVATION LAYOUT
 EL2.0 SCALE: 1:100

LUMINAIRE SCHEDULE:					
TYPE	MANUFACTURER	CATALOGUE NO.	VOLTS	LAMPS	REMARKS
5	CFI LITHONIA METALUX PEERLESS VISIONEERING	TH248-UNV-CA-VB CLM-2-32-MVOLT-GEB10IS-CSA WBI-232IMA-UNV-EB81 PFK-4-232-1908-UNV-1B-ELISPREM UNI248-T832NUNV-B50PSPR	120	2XF32T8	SURFACE MOUNTED WRAPAROUND LENSE RETAINED BY SPRING LOADED METAL PINS. INJECTION MOLDED CLEAR PRISMATIC ACRYLIC LENSE.
6	LEVITON/MCGILL P + S	49875/2100A 272/2100A	120	CF23	PORCELAIN LAMPHOLDER CW WIREGUARD.
7	CFI COLUMBIA DAY-BRITE LITHONIA METALUX PEERLESS VISIONEERING	TU248-UNV-CA KL4-232-EBRLHU-CSA ATI4232-UNV-1/2-EB101 AF-2-32-MVOLT-GEB10IS-CSA DIM-232-UNV-EB81 ITA-4-232-UNV-1B-ELISPREM TUR248-T832NUNV-B50R3PSPR	120	2XF32T8	DOUBLE LAMP INDUSTRIAL CW SLOTTED REFLECTOR. SPRING LOADED SOCKETS. SURFACE MOUNTED OR SUSPENDED BY CHAIN OR AIRCRAFT CABLE.
8	COVENTRY ARCHITECTURAL SERIES	4MHT4-20-E4-FL/AHTP41-SCL	120	1-20WT4MH	

NOTES:

1. PROVIDE PHOTOCELL ON/OFF CONTROL.

0. ISSUED FOR BID 2012-11-09

revision

This drawing must not be scaled.

The general Contractor must verify all dimensions, datums and levels prior to commencement of work. All errors and omissions must be reported immediately to the Architect.

Variations and modifications to work shown on this drawing shall not be carried out without written permission from the Architect.

This drawing is the exclusive property of the Architect and cannot be reproduced without written permission of the Architect. Reproduction must bear the name of the Architect. Copyright © 2012.

MCW / AGE
 Consulting Professional Engineers
 210-1621 Wellington Avenue
 Winnipeg, Manitoba, R3H 0G4
 Phone: (204) 779-7900 Fax: (204) 779-1119
 E-Mail: mcw_age@mcw.com

8107

harold funk architect

Harold Funk Architect
 Architecture and Urban Design

401-55 Donald Street, Winnipeg, Manitoba R3C 1L8
 T (204) 943-9087 info@funkarchitect.com
 F (204) 949-9231 funkarchitect.com

project

ELEVATOR ADDITION AND ACCESSIBILITY UPGRADES OF CENTURY ARENA
 Winnipeg, Manitoba Bid Opportunity No. 579-2012

sheet title
LIGHTING RENOVATION

project number: 12-003
 scale: 1:100
 drawn by: MJB
 approved by: KEI
 date: NOV. 9, 2012

drawing number:
EL2.0

