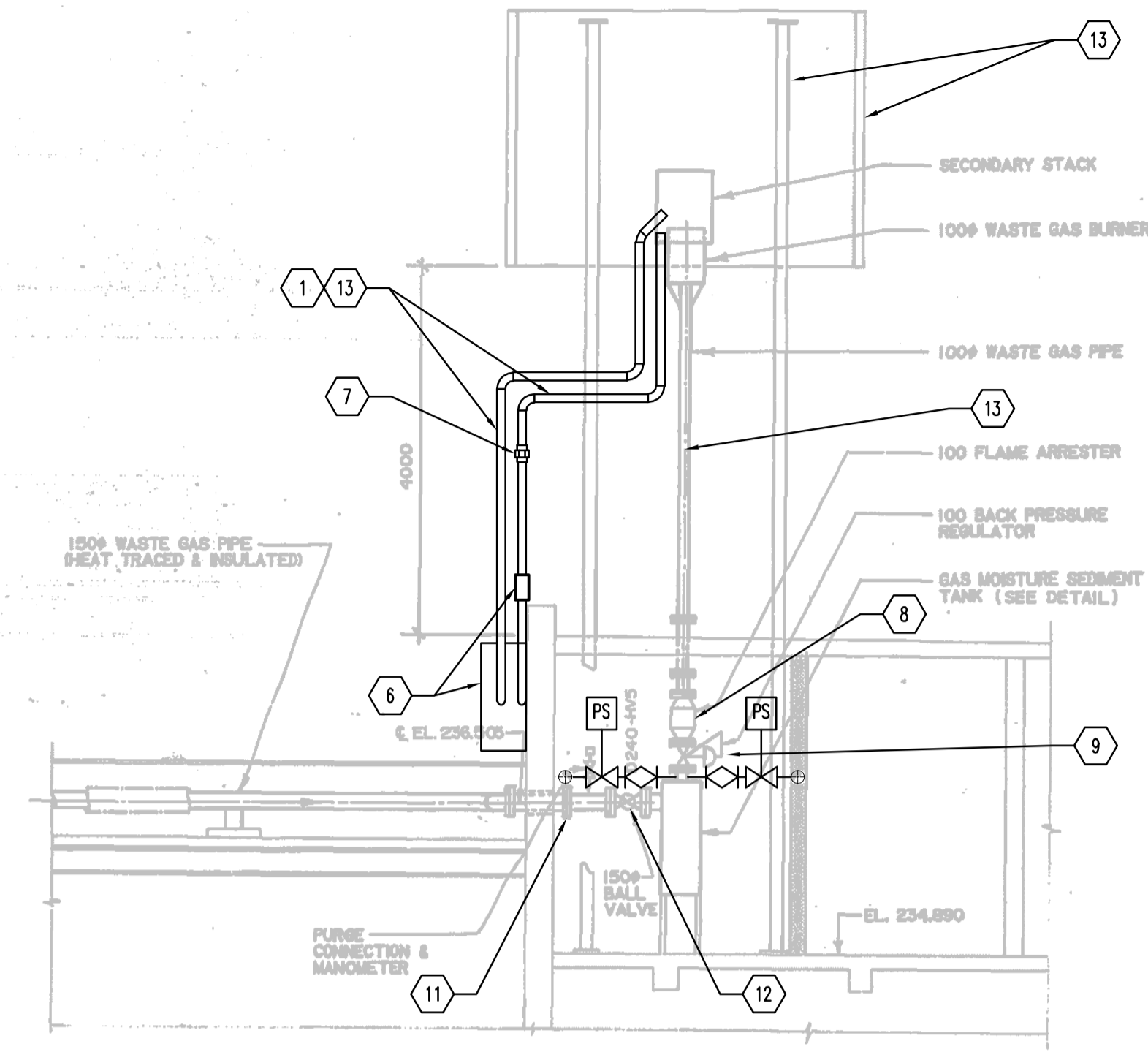
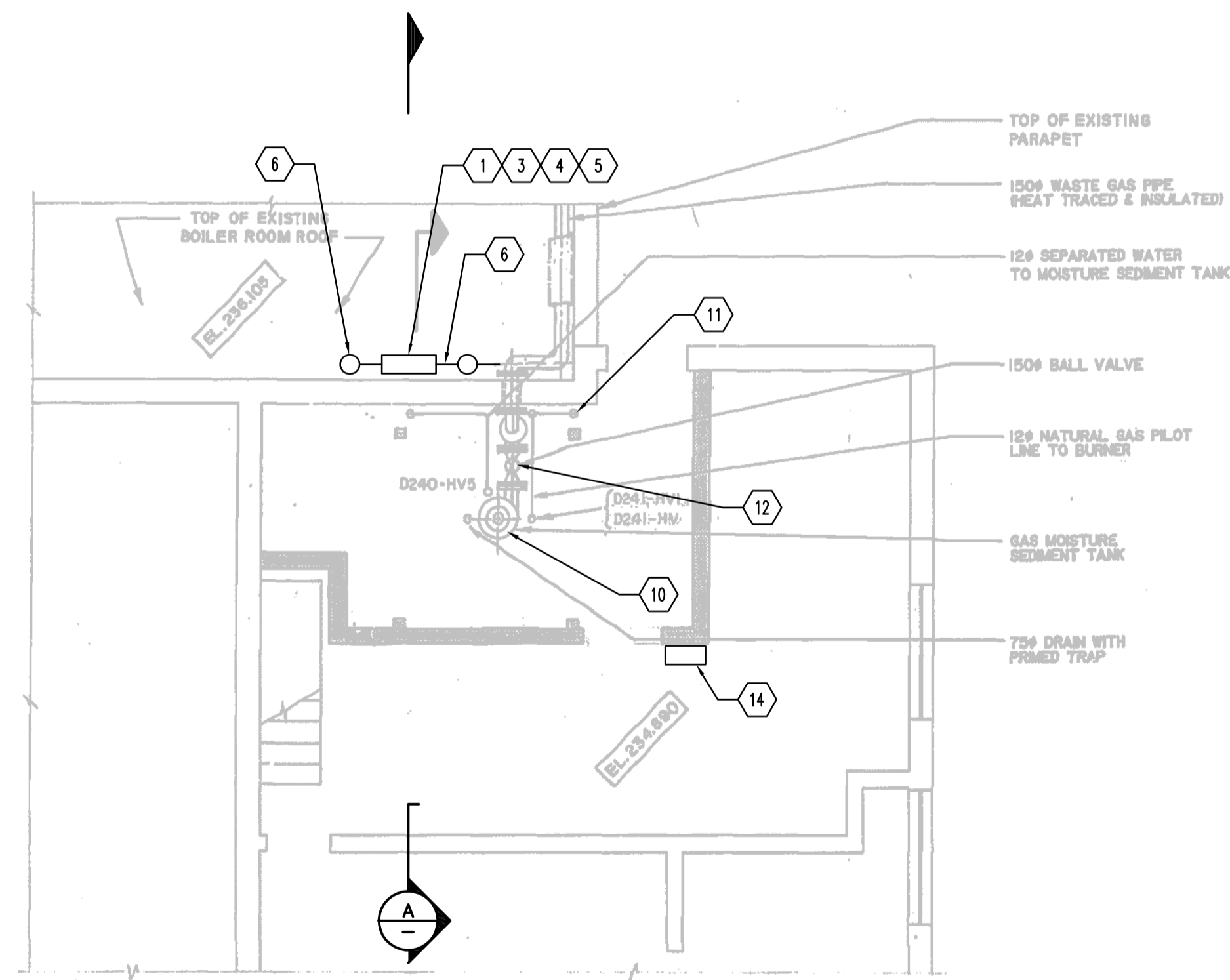


PART SITE PLAN



DISCHARGE LINE SECTION A  
1:50

1. THE ENTIRE GAS PIPING SYSTEM SHALL BE PURGED OF METHANE GAS USING CARBON DIOXIDE OR NITROGEN GAS PRIOR TO DEMOLITION. ABIDE BY CANADIAN STANDARDS ASSOCIATION (CSA) STANDARD CSA B149.1-10 "NATURAL GAS AND PROPANE INSTALLATION CODE", CLAUSE 6.23 PURGING OF PIPING AND TUBING SYSTEMS AND HOSE AFTER LEAK TESTING AND CLAUSE 6.24 PURGING GAS FROM A PIPING OR TUBING SYSTEM.
2. ISOLATE SLUDGE HOLDING TANKS (SHTs) BIOGAS SUPPLY LINE FROM WASTE GAS BURNER AT SHTs GAS DRAW-OFF PLUG VALVE AND LOCK OUT.
3. DISCONNECT 12 MM DIAMETER NATURAL GAS SUPPLY LINE, 12 MM DIAMETER FLAME RETENTION LINE AND 50 MM DIAMETER CONTINUOUS FLAME PIPE FROM GAS PANEL. LOCK OUT NATURAL GAS SUPPLY LINE.
4. OPEN POWER CIRCUIT PROVIDING POWER TO THE NATURAL GAS PILOT SUPPLY PANEL. LOCK OUT CIRCUIT. DISCONNECT POWER WIRING TO THE NATURAL GAS PILOT SUPPLY PANEL.
5. REMOVE AND DEMOLISH NATURAL GAS PILOT SUPPLY PANEL. INSTALL NEW NATURAL GAS PILOT SUPPLY PANEL.
6. REMOVE AND DEMOLISH FLAME RETENTION PIPE FLAME ARRESTER, NATURAL GAS PRESSURE REGULATOR AND NATURAL GAS FLAME ARRESTER. INSTALL NEW FLAME RETENTION PIPE FLAME ARRESTER, NATURAL GAS PRESSURE REGULATOR AND NATURAL GAS FLAME ARRESTER.
7. REMOVE AND REPLACE PIPE UNION ON FLAME RETENTION PIPE DOWN-STREAM OF NATURAL GAS SUPPLY PANEL.
8. REMOVE EXISTING 100 MM DIAMETER (4") FLAME ARRESTER AND REPLACE WITH NEW 100 MM DIAMETER (4") FLAME ARRESTER. REFER TO SPECIFICATIONS FOR DETAILS.
9. REMOVE EXISTING 100 MM DIAMETER (4") PRESSURE REGULATOR. TURN OVER REGULATOR TO NEWPCC AND TRANSPORT MATERIAL TO AN ON-SITE LOCATION. INSTALL NEW 100 MM DIAMETER (4") PRESSURE REGULATOR. REFER TO SPECIFICATIONS FOR DETAILS.
10. DE-ENERGIZE THE HIGH AND HIGH-HIGH PRESSURE SWITCHES. DISCONNECT INSTRUMENT CONDUCTORS AND REMOVE THE TWO PRESSURE SWITCHES (2) WITH 12 MM DIAMETER ISOLATION PLUG VALVES. INSTALL NEW 12 MM DIAMETER PLUG VALVES AND NEW PRESSURE SWITCHES. RECONNECT CONDUCTORS.
11. REMOVE MANOMETER EXISTING 12 MM DIAMETER ISOLATION PLUG VALVE AND INSTALL NEW 12 MM DIAMETER PLUG VALVE.
12. REMOVE BIOGAS SUPPLY PIPE EXISTING 150 MM DIAMETER ISOLATION PLUG VALVE. INSTALL NEW 150 MM DIAMETER PLUG VALVE.
13. INSTALL NEW THERMAL OPERATED SHUT-OFF VALVE. MODIFY STAINLESS STEEL PIPE.
14. REMOVE EXISTING DRIP TRAP. MODIFY STAINLESS STEEL PIPE.
15. REMOVE EXISTING 50 MM DIAMETER PLUG VALVE AND TURN OVER TO NEW PCC. INSTALL NEW 50 MM DIAMETER PLUG VALVE.
16. INSTALL 12 MM DIAMETER GAS PURGE VALVE.
17. REMOVE EXISTING 12 MM DIAMETER PLUG VALVE AND TURN OVER TO CITY. INSTALL NEW 12 MM DIAMETER PLUG VALVE.
18. PAINT PIPING AND STRUCTURAL STEEL. PROVIDE PROTECTIVE PLYWOOD SHEETING TO PROTECT ROOF MEMBRANE FROM DAMAGE THAT MAY BE CAUSED BY LADDERS, SCAFFOLDING, PEDESTRIAN TRAFFIC, ETC. REFER TO SPECIFICATIONS FOR DETAILS. THE ROOF WORK SHALL ABIDE BY MANITOBA WORKPLACE SAFETY & HEALTH DIVISION "FALL PROTECTION GUIDELINES" AND MANITOBA PAINTING SHALL ABIDE BY WORKPLACE SAFETY & HEALTH DIVISION PART 6 PERSONAL PROTECTIVE EQUIPMENT
19. EXISTING WASTE GAS BURNER NO. 4 CONTROL PANEL.
20. DE-ENERGIZE HEAT TRACE ON DIGESTER NO. 8 GAS DRAW-OFF PIPE BETWEEN DIGESTER 8 AND DIGESTER 6. REMOVE PIPE INSULATION PROTECTIVE ALUMINUM COVER, INSULATION AND HEAT TRACE FROM DIGESTER NO. 8 GAS DRAW-OFF PIPE. INSTALL NEW HEAT TRACE AND REINSTALL INSULATION AND PIPE INSULATION PROTECTIVE ALUMINUM COVER. REFER TO THE ELECTRICAL DIVISION FOR HEAT INFORMATION.
21. ROOF WORK SHALL CONFORM TO THE MANITOBA WORKPLACE SAFETY & HEALTH DIVISION "FALL PROTECTION GUIDELINES."



PART PLAN - FILTER BUILDING



**APEGM**  
Certificate of Authorization  
Stantec Consulting Ltd.  
No. 1301

**METRIC**  
WHOLE NUMBERS INDICATE MILLIMETRES  
DECIMALIZED NUMBERS INDICATE METRES

|  |  |  |                     |  |  |
|--|--|--|---------------------|--|--|
| B.M. ELEV.                               |  | <b>Stantec Consulting Ltd.</b><br>905 Waverley Street, Winnipeg, Manitoba<br>Tel 204-489-5900 Fax 204-453-9012 |                     | ENGINEER'S SEAL  |  |
|  |  | <b>Stantec</b>   |                     | ORIGINAL SEALED BY<br>A.H. BEGHIN<br>P. ENG.<br>12/10/31 |  |
|  |  | DESIGNED BY: A.B.  | CHECKED BY: S.A.B.  | BID OPPORTUNITY NO.<br>573-2012                          |  |
|  |  | DRAWN BY: K.R.   | APPROVED BY: S.K.B. | CITY DRAWING NUMBER<br>I-OI0D-M0006-O01                  |  |
| 3. ISSUED FOR TENDER 12.11.01 S.K.B.     |  | HOR. SCALE: 1:50   |                     | SHEET OF   |  |
| 2. ISSUED FOR 95% REVIEW 12.09.12 S.K.B. |  | VERTICAL:  |                     | 12 29  |  |
| 1. ISSUED FOR 60% REVIEW 12.07.27 S.K.B. |  | RELEASED FOR CONSTRUCTION:   |                     |  |  |
| NO. REVISIONS                            |  | DATE 2011.07.17  |                     |  |  |

**THE CITY OF WINNIPEG**  
WATER AND WASTE DEPARTMENT  
**Winnipeg**  
NORTH END WATER POLLUTION CONTROL CENTRE  
REHABILITATION OF DIGESTER No. 11 AND  
SLUDGE HOLDING TANK No. 5 AND 7  
SHT No. 5,6,7,8 WASTE GAS BURNER UPGRADE

V:\1117\winnipeg\111712020\_NSRPCC\_Digester\_Visuals\02\_design\sheet\_files\04\_process\1-010D-M0006-001.dwg  
2012 October 31, 12:58 pm