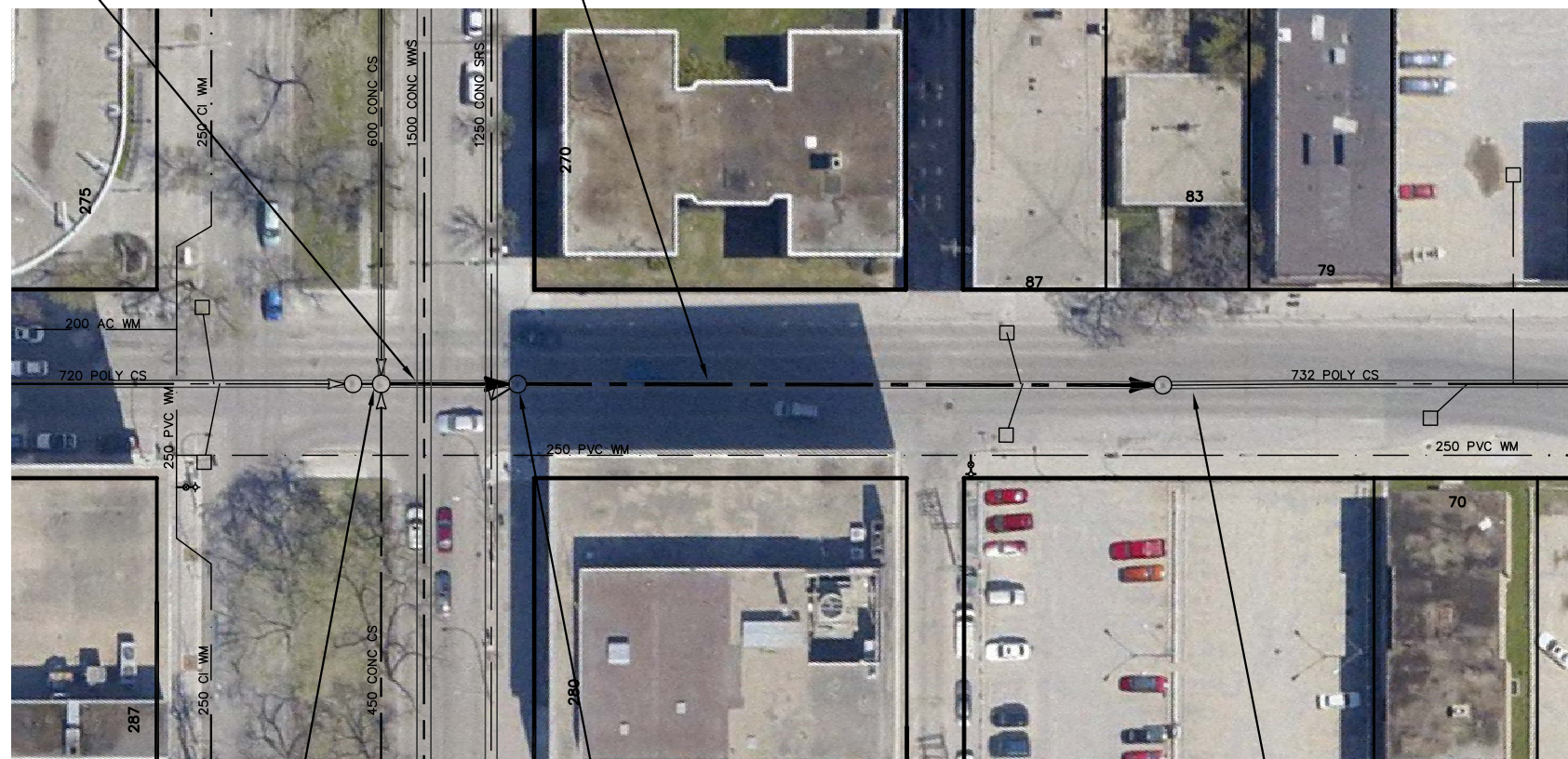


14.80 OF 750 BRICK CS  
TO BE LINED S-MA20014287  
(FULLY DETERIORATED)

68.70 OF 750 BRICK CS  
TO BE LINED S-MA20014204  
(FULLY DETERIORATED)

# SMITH STREET



BROADWAY

S-MH20012912  
RIM 232.17  
INV E 227.52  
INV S 227.08  
INV W 227.51  
INV N 226.91

S-MH20012911  
RIM 231.82  
INV S 227.06  
INV N 227.06

S-MH20012838  
RIM 231.75  
INV S 228.94  
INV S 226.95

SEWER JUNCTION INFORMATION FROM SEWER VIDEO INSPECTION SEWER ID S-MA20014204		
DISTANCE FROM MH ID S-MH20012911		
DISTANCE	DIAMETER	CLOCK
16.2	150	1
26.7	150	9
31.0	150	2
35.4	150	3
36.2	150	10
44.9	150	10
51.4	250	1
52.0	150	10
53.3	150	9
53.7	150	3
60.0	150	9

SEWER JUNCTION INFORMATION FROM SEWER VIDEO INSPECTION SEWER ID S-MA20014287		
DISTANCE FROM MH ID S-MH20012911		
DISTANCE	DIAMETER	CLOCK

### WARNING

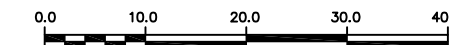
IF POWER EQUIPMENT OR EXPLOSIVES  
ARE TO BE USED FOR EXCAVATION ON  
THIS PROJECT THE CONTRACTOR MUST:

- 1) NOTIFY THE GAS COMPANY OF THE PROPOSED LOCATION OF EXCAVATION.
- 2) TAKE PRECAUTION TO AVOID DAMAGE TO GAS COMPANY INSTALLATIONS.

SEE PROVINCIAL REGULATION 210/72 FOR DETAILS

### METRIC

WHOLE NUMBERS INDICATE MILLIMETRES  
DECIMALIZED NUMBERS INDICATE METRES



LOCATION APPROVED  
UNDERGROUND STRUCTURES

SUPV. U/G STRUCTURES COMMITTEE DATE

NOTE:

LOCATION OF UNDERGROUND STRUCTURES AS SHOWN ARE BASED ON THE BEST INFORMATION AVAILABLE BUT NO GUARANTEE IS GIVEN THAT ALL EXISTING UTILITIES ARE SHOWN OR THAT THE GIVEN LOCATIONS ARE EXACT. CONFIRMATION OF EXISTENCE AND EXACT LOCATION OF ALL SERVICES MUST BE OBTAINED FROM THE INDIVIDUAL UTILITIES BEFORE PROCEEDING WITH CONSTRUCTION.

B.M. ELEV.

CONSTRUCTION COMPLETION DATE: YYYY MM DD

NO.	REVISIONS	DATE	BY

DESIGNED BY	SC	CHECKED BY	SC
DRAWN BY	JB	APPROVED BY	KZ
SCALE:		RELEASED FOR CONSTRUCTION	
HORIZONTAL	1: 750		
VERTICAL			
DATE	2012 08 27	DATE	

ENGINEER'S SEAL

ORIGINAL SIGNED BY  
S.R.J. COURNOYER  
AUG. 15, 2012

CONSULTANT DRAWING NUMBER

BID OPPORTUNITY: ??-????  
CONTRACT NUMBER: ??



**THE CITY OF WINNIPEG**  
WATER AND WASTE DEPARTMENT  
ENGINEERING DIVISION

2012 SEWER RENEWALS  
BY CIPP LINING  
**SMITH STREET**  
MH AT BROADWAY (CL) TO  
1ST MH S OF BROADWAY

SHEET 45 OF 57  
CITY DRAWING NUMBER

10317

PLOT DATE: 2012 08 27

FILE PATH: R:\DRAWINGS\SEWER\2012\_RENEWALS\CIPP, TPR, and EPR\CONTRACT 10\CIPP LINING\  
FILE NAME: SMITH.dwg