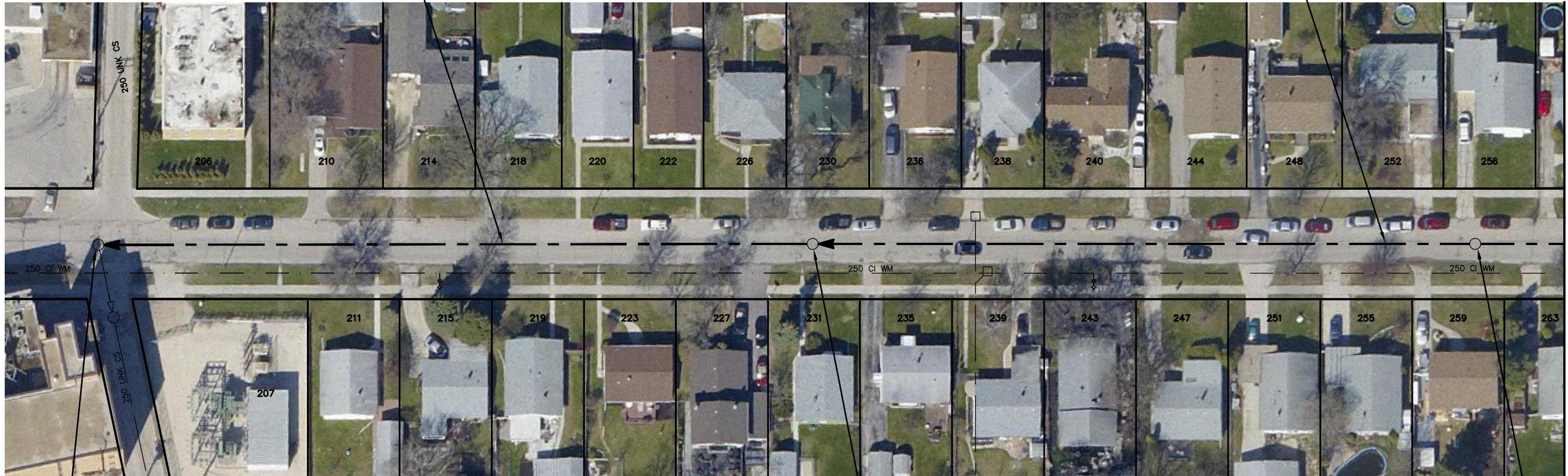


116.60 OF 200 CONC CS
TO BE LINED S-MA20005410
(FULLY DETERIORATED)

OLIVE STREET

108.60 OF 200 CONC CS
TO BE LINED S-MA20005409
(FULLY DETERIORATED)



FOR CONTINUATION
SEE DWG 10304

S-MH20004945
RIM 236.30
INV N 232.65
INV E 232.65

S-MH20004943
RIM 236.14
INV N 233.30
INV S 233.30

S-MH20004939
RIM 236.44
INV N 233.78
INV S 233.78

SEWER JUNCTION INFORMATION FROM
SEWER VIDEO INSPECTION
SEWER ID S-MA20005410

DISTANCE FROM MH ID S-MH20004943		
DISTANCE	DIAMETER	CLOCK
7.4	150	1
15.5	150	10
26.5	150	2
32.9	150	2
34.9	150	10
48.4	150	10
59.0	150	11
61.3	150	1
61.4	150	10
63.9	200	1
77.5	150	1
79.7	150	11
84.2	150	10
100.5	150	2

SEWER JUNCTION INFORMATION FROM
SEWER VIDEO INSPECTION
SEWER ID S-MA20005409

DISTANCE FROM MH ID S-MH20004939		
DISTANCE	DIAMETER	CLOCK
4.6	150	9
7.9	150	2
18.0	150	10
26.0	150	2
33.7	200	9
44.3	150	2
50.8	150	10
60.8	100	10
62.3	150	2
64.3	150	10
66.2	150	10
76.6	150	10
82.0	150	10
90.4	150	2
97.1	150	10
103.1	150	1
106.1	150	2
108.0	150	10

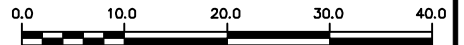
WARNING

IF POWER EQUIPMENT OR EXPLOSIVES
ARE TO BE USED FOR EXCAVATION ON
THIS PROJECT THE CONTRACTOR MUST:

- 1) NOTIFY THE GAS COMPANY OF THE PROPOSED LOCATION OF EXCAVATION.
- 2) TAKE PRECAUTION TO AVOID DAMAGE TO GAS COMPANY INSTALLATIONS.

SEE PROVINCIAL REGULATION 210/72 FOR DETAILS

METRIC
WHOLE NUMBERS INDICATE MILLIMETRES
DECIMALIZED NUMBERS INDICATE METRES



LOCATION APPROVED
UNDERGROUND STRUCTURES

SUPV. U/G STRUCTURES COMMITTEE DATE

NOTE:

LOCATION OF UNDERGROUND STRUCTURES AS SHOWN ARE BASED ON THE BEST INFORMATION AVAILABLE BUT NO GUARANTEE IS GIVEN THAT ALL EXISTING UTILITIES ARE SHOWN OR THAT THE GIVEN LOCATIONS ARE EXACT. CONFIRMATION OF EXISTENCE AND EXACT LOCATION OF ALL SERVICES MUST BE OBTAINED FROM THE INDIVIDUAL UTILITIES BEFORE PROCEEDING WITH CONSTRUCTION.

B.M. ELEV.			
CONSTRUCTION COMPLETION DATE: YYYY MM DD			
NO.	REVISIONS	DATE	BY

DESIGNED BY	SC	CHECKED BY	SC
DRAWN BY	JB	APPROVED BY	KZ
SCALE:		RELEASED FOR CONSTRUCTION	
HORIZONTAL	1:750		
VERTICAL			
DATE	2012 08 17	DATE	

ENGINEER'S SEAL

ORIGINAL SIGNED BY
S.R.J. COURNOYER
AUG. 15, 2012

CONSULTANT DRAWING NUMBER
-


THE CITY OF WINNIPEG
WATER AND WASTE DEPARTMENT
ENGINEERING DIVISION

2012 SEWER RENEWALS
BY CIPP LINING
OLIVE STREET
2ND MH N OF PORTAGE AVENUE TO
1ST MH N OF PORTAGE AVENUE

SHEET 31 OF 57
CITY DRAWING NUMBER
10303