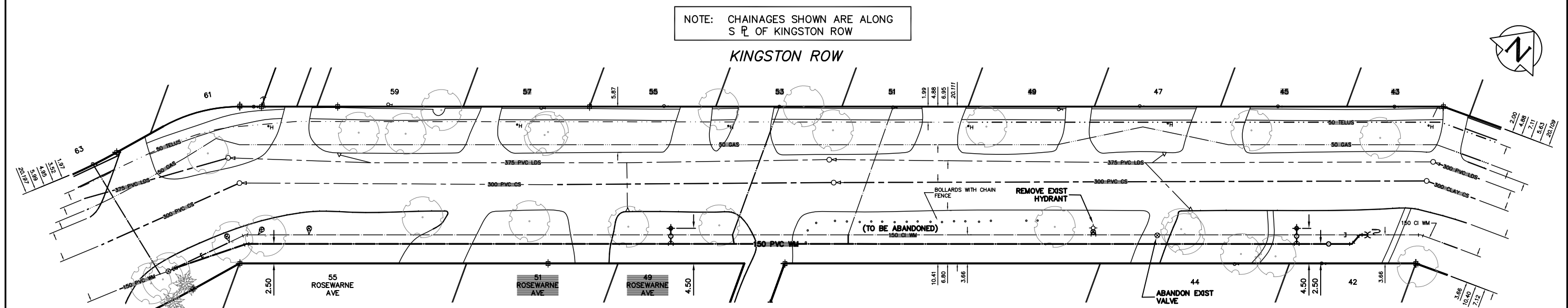


NOTE: CHAINAGES SHOWN ARE ALONG S R OF KINGSTON ROW



WATER SERVICE INFORMATION

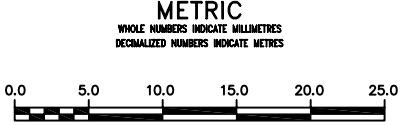
| ADDRESS | SIZE (mm) MATERIAL (STREET) | SIZE (mm) MATERIAL (PROP.) | SHORT & LONG MEASUREMENT | CORP. LOCATION | REMARKS |
|-----------------|-----------------------------|----------------------------|--------------------------|----------------|---------|
| 42 KINGSTON ROW | 12 | 12 | 0.57 WWL HSE | | |
| RESIDENTIAL | COPPER | COPPER | 187.82 E OF ROSEWARNE | | |
| 43 KINGSTON ROW | 12 | 12 | 5.80 WEL HSE | | |
| RESIDENTIAL | LEAD | LEAD | 192.28 E OF ROSEWARNE | | |
| 44 KINGSTON ROW | 12 | 12 | 5.04 WEL HSE | | |
| RESIDENTIAL | LEAD | LEAD | 156.53 E OF ROSEWARNE | | |
| 45 KINGSTON ROW | 12 | 12 | 2.88 EWL HSE | | |
| RESIDENTIAL | LEAD | LEAD | 187.35 E OF ROSEWARNE | | |
| 47 KINGSTON ROW | 12 | 12 | 4.40 EWL HSE | | |
| RESIDENTIAL | LEAD | LEAD | 149.58 E OF ROSEWARNE | | |
| 49 KINGSTON ROW | 12 | 12 | 0.71 WEL HSE | | |
| RESIDENTIAL | LEAD | LEAD | 139.15 E OF ROSEWARNE | | |

WATER SERVICE INFORMATION

| ADDRESS | SIZE (mm) MATERIAL (STREET) | SIZE (mm) MATERIAL (PROP.) | SHORT & LONG MEASUREMENT | CORP. LOCATION | REMARKS |
|-----------------|-----------------------------|----------------------------|--------------------------|----------------|---------|
| 51 KINGSTON ROW | 20 | 20 | 3.91 EWL HSE | | |
| RESIDENTIAL | COPPER | COPPER | 117.85 E OF ROSEWARNE | 5.6 W OF S/C | |
| 53 KINGSTON ROW | 20 | 20 | 5.27 EWL HSE | | |
| RESIDENTIAL | COPPER | COPPER | 103.27 E OF ROSEWARNE | 6.0 W OF S/C | |
| 55 KINGSTON ROW | 20 | 20 | 2.85 WEL HSE | | |
| RESIDENTIAL | COPPER | COPPER | 88.70 E OF ROSEWARNE | | |
| 57 KINGSTON ROW | 20 | 20 | 7.93 EWL HSE | | |
| RESIDENTIAL | COPPER | COPPER | 72.70 E OF ROSEWARNE | | |
| 59 KINGSTON ROW | 12 | 12 | 9.29 WEL HSE | | |
| RESIDENTIAL | LEAD | LEAD | 53.19 E OF ROSEWARNE | | |
| 61 KINGSTON ROW | 20 | 20 | 1.08 WEL HSE | | |
| RESIDENTIAL | COPPER | COPPER | 35.86 E OF ROSEWARNE | | |

*SERVICES TO BE RENEWED TO R ALL OTHERS TO BE RECONNECTED

NOTE: ALL VALVES TO BE INSTALLED COUNTER-CLOCKWISE TO CLOSE



WARNING
IF POWER EQUIPMENT OR EXPLOSIVES ARE TO BE USED FOR EXCAVATION ON THIS PROJECT THE CONTRACTOR MUST:
1) NOTIFY THE GAS COMPANY OF THE PROPOSED LOCATION OF EXCAVATION.
2) TAKE PRECAUTION TO AVOID DAMAGE TO GAS COMPANY INSTALLATIONS.
SEE PROVINCIAL REGULATION 210/72 FOR DETAILS

LOCATION APPROVED UNDERGROUND STRUCTURES
SUPV. U/G STRUCTURES COMMITTEE DATE
NOTE:
LOCATION OF UNDERGROUND STRUCTURES AS SHOWN ARE BASED ON THE BEST INFORMATION AVAILABLE BUT NO GUARANTEE IS GIVEN THAT ALL EXISTING UTILITIES ARE SHOWN OR THAT THE GIVEN LOCATIONS ARE EXACT. CONFIRMATION OF EXISTENCE AND EXACT LOCATION OF ALL SERVICES MUST BE OBTAINED FROM THE INDIVIDUAL UTILITIES BEFORE PROCEEDING WITH CONSTRUCTION.

| NO. | REVISIONS | DATE | BY |
|-----|-----------|------|----|
| | | | |

| DESIGNED BY | CHECKED BY |
|-----------------------------------|----------------------------------|
| NC | SC |
| DRAWN BY | APPROVED BY |
| CJH | KZ |
| SCALE: | RELEASED FOR CONSTRUCTION |
| HORIZONTAL 1:250 VERTICAL 1:50 | K.R. ZUREK DATE JULY 30, 2012 |

ENGINEER'S SEAL
ORIGINAL SIGNED BY S.R.J. COUNROYER 12-07-30
CONSULTANT DRAWING NUMBER

THE CITY OF WINNIPEG
WATER AND WASTE DEPARTMENT
ENGINEERING DIVISION
2012 WATERMAIN RENEWALS
KINGSTON ROW
18.5 N OF ROSEWARNE AVENUE TO
195 N OF ROSEWARNE AVENUE
SHEET 7 OF 9
CITY DRAWING NUMBER
D-13030