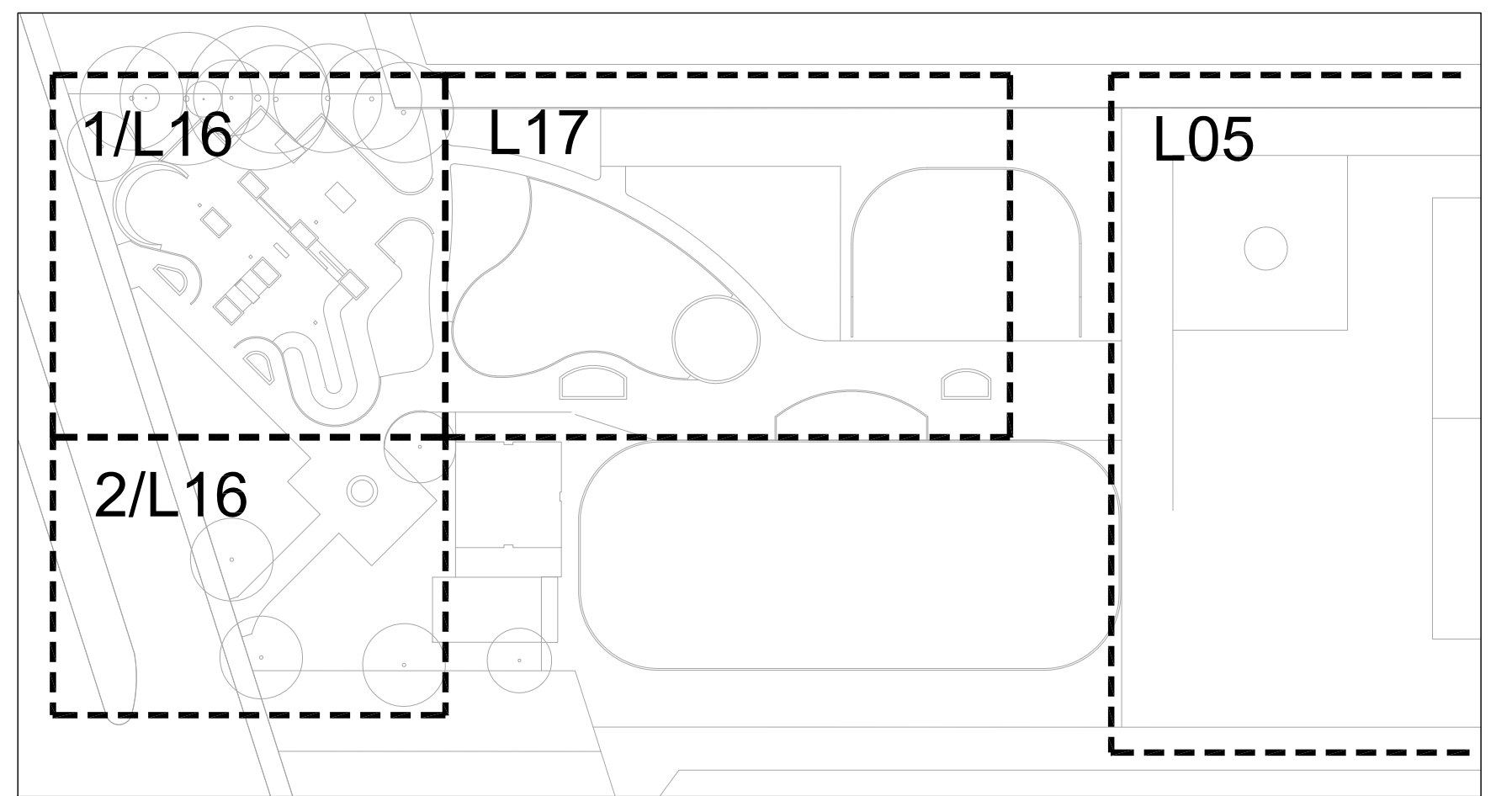
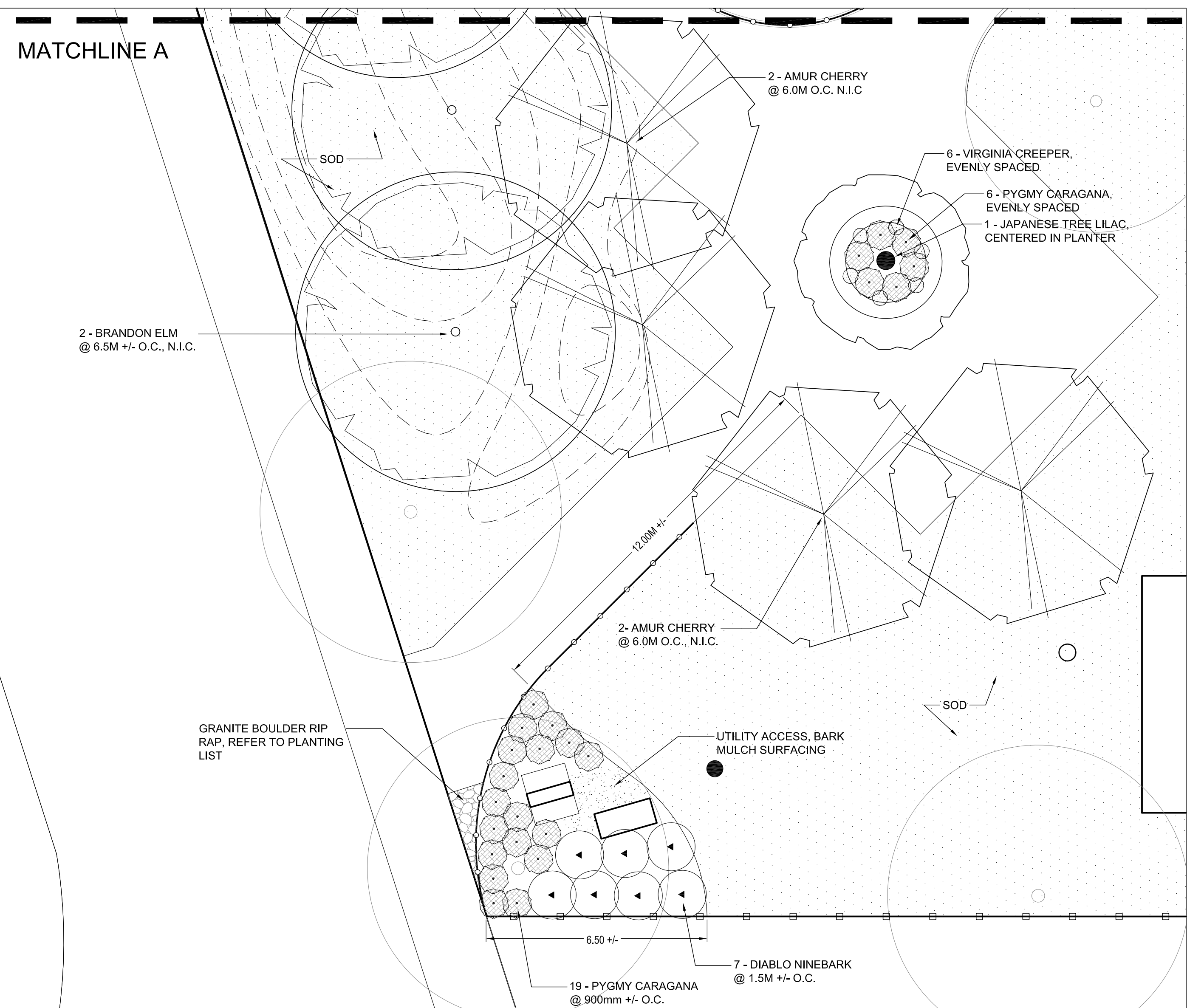


PLANTING NOTES:  
 1. TREES IN SOD, MULCH OR PLANTING BEDS NOT INCLUDED IN CONTRACT. TREES IN CONCRETE PLANTERS ARE INCLUDED.  
 2. REFER TO L-18 FOR PLANTING DETAILS  
 3. TREES TO BE MIN. 3.0M FROM ALL LIGHT POLES, CATCH BASINS, DRAINS AND OTHER UTILITIES.



PLANTING KEY PLAN



2 PLANTING PLAN - SOUTH WEST  
 L16 SCALE - 1 : 100

1 PLANTING PLAN - NORTH WEST  
 L16 SCALE - 1 : 100

NOTES:

REV	YY / MM / DD	DESCRIPTION	BY
1	12 / 08 / 16	ISSUED FOR TENDER	DKM
0	12 / 07 / 19	ISSUED FOR TENDER	DKM

A.	B.
SECTION LETTER OR DETAIL NUMBER, DRAWING WHERE SECTION OR DETAIL IS DRAWN.	DRAWING WHERE SECTION OR DETAIL IS DRAWN.
OR	
A. DRAWING WHERE SECTION OR DETAIL IS INDICATED.	SECTION OR DETAIL SHOWN ON SAME DRAWING.

SEAL  
 the manitoba association of landscape architects  
 BERK K. MURRAY  
 Member no. 63

CLIENT  
 CITY OF WINNIPEG  
 PLANNING, PROPERTY AND DEVELOPMENT DEPARTMENT  
 300 - 65 GARRY ST. R3C 4K4

SCATLIFF + MILLER + MURRAY Inc.  
 TEL 204 927-3444  
 FAX 204 927-3443  
 1120 - 201 PORTAGE AVENUE  
 WINNIPEG, MB, CANADA

PROJECT		KELVIN RECREATION SITE B.P.C.C.	
TITLE		PLANTING PLAN WEST	
DESIGN	DRAWN	DATE - Y / M / D	SCALE
DKM/CD	AH	12/07/19	1:100
CHECKED	APPROVED	PROJECT NO.	DRAWING NO.
DKM	DKM	11-0107-22	L-16