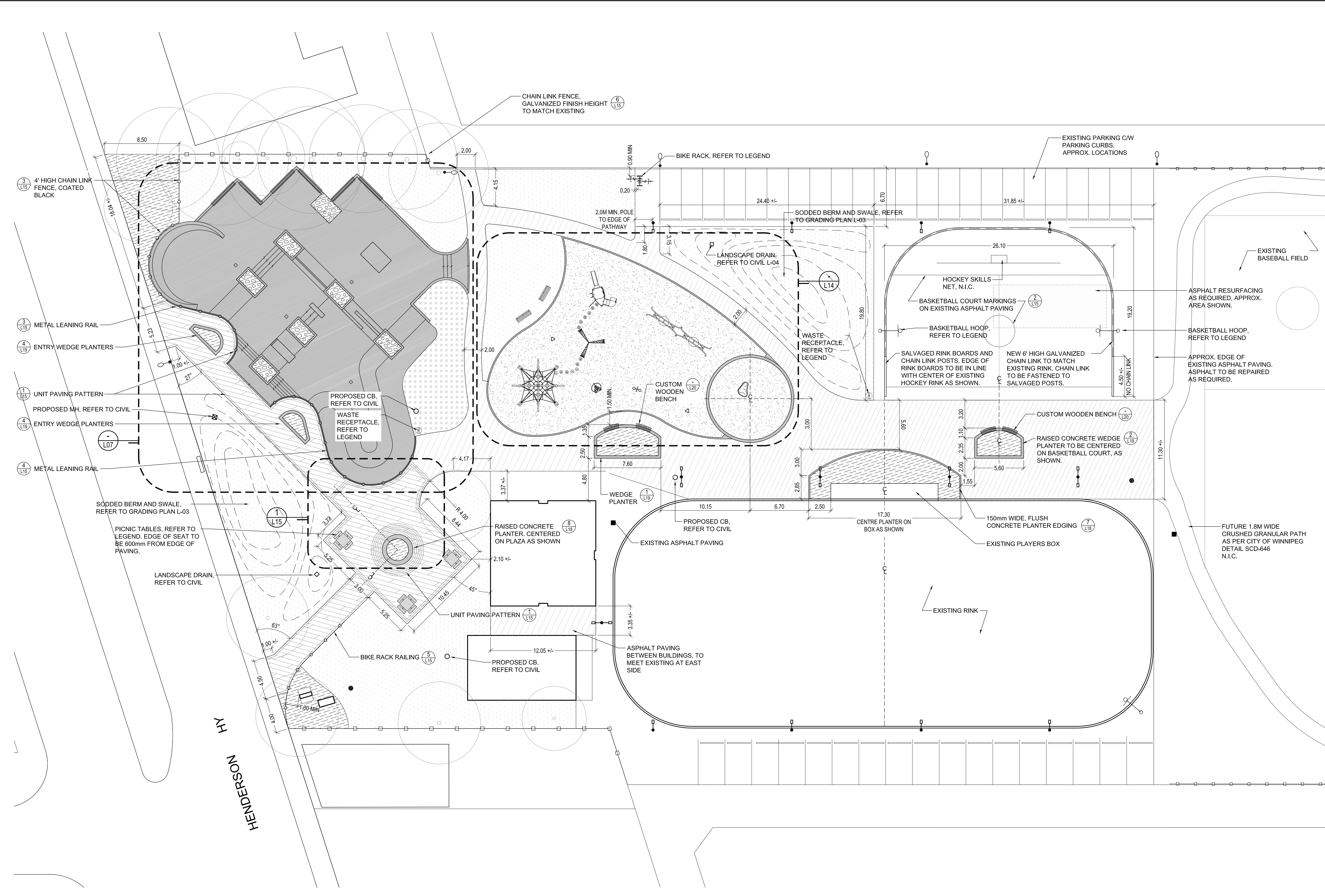


sheet size: Super A1 24" x 36" jobcode: 11 (metric) CAD File Name: 11-0107-22_kelvin_bench_02.dwg arrangement: 2.dwg



LAYOUT LEGEND

EXISTING:

- (Circle with dot) TREE - TO BE PROTECTED
- (Circle with cross) MAST LIGHT
- (Circle with vertical line) ROAD / LANE LIGHT
- (Circle with dot) CATCH BASIN
- (Square) MANHOLE
- (Line with cross-ticks) CHAIN LINK FENCE

PROPOSED:

- (Square with cross) CATCH BASIN, MANHOLE AND LANDSCAPE DRAIN, REFER TO CIVIL L-04
- (Line with cross-ticks) FENCE AND RAILING, TYPE VARIES - REFER TO PLANS L-15 AND DETAILS L-20
- (Line with cross-ticks) BIKE RACK - SPACE SAVER PLUS BIKE RACK (MAX. CAPACITY 8 BICYCLES), GALVANIZED FINISH, SURFACE MOUNT C/W TAMPER PROOF FASTENERS, AS SUPPLIED BY BIKE STOP BIKE RACKS, WINNIPEG, OR APPROVED EQUAL.
- (Line with cross-ticks) BENCH - 39-60D BENCH WITH BACK, EMBEDDED MOUNT, 6' LENGTH, DOUGLAS FIR, BLACK POWDER COATED METAL COMPONENTS. INSTALL AS PER MANUFACTURERS INSTRUCTIONS, AS SUPPLIED BY DUMOR SITE FURNISHINGS, OR APPROVED EQUAL.
- (Line with cross-ticks) CUSTOM BENCH - FABRICATION AS PER DETAILS L-20
- (Line with cross-ticks) PICNIC TABLES: - TABLE WITH 3 SEATS, 76-33D, DOUGLAS FIR WITH BLACK POWDER COATED METAL COMPONENTS, SUB-FLOOR MOUNT ON 1.5Mx1.5Mx0.2M CONCRETE FOOTING, AS SUPPLIED BY DUMOR SITE FURNISHINGS, OR APPROVED EQUAL.
- (Line with cross-ticks) - TABLE WITH 4 SEATS, 76-34D, DOUGLAS FIR WITH BLACK POWDER COATED METAL COMPONENTS, SUB-FLOOR MOUNT ON 1.5Mx1.5Mx0.2M CONCRETE FOOTING, AS SUPPLIED BY DUMOR SITE FURNISHINGS, OR APPROVED EQUAL.
- (Circle with cross) WASTE RECEPTACLE - CITY OF WINNIPEG METAL SLAT TYPE SCD-119, EMBEDDED MOUNT AS PER MANUFACTURERS INSTRUCTIONS. POWDER COATED BLACK, C/W WIRE BASKET INSERT IN BLACK, AS SUPPLIED BY CITY OF WINNIPEG FLEET MANAGEMENT.
- (Circle with cross) BASKETBALL HOOP - TO MODEL EXISTING, COMPLETE WITH NEW FILE AND INSTALLED AS PER MANUFACTURERS DETAILS
- (Hatched pattern) CONCRETE UNIT PAVING - BARKMAN HOLLAND PAVERS ON GRANULAR C/W SNAP EDGE. REFER TO UNIT PAVING PLAN 1/L-15 AND DETAIL 6/L-18
- (Hatched pattern) ASPHALT PAVING - REFER TO DETAIL 5/L-18
- (Hatched pattern) POURED IN PLACE CONCRETE - REFER TO DETAILS
- (Hatched pattern) WOOD FIBER SAFETY SURFACING, PLAYGROUND AND PLANTING BED - REFER TO 3/L-14 AND 11/L-18
- (Hatched pattern) PLANTING BED C/W GRANITE FLAGSTONE SURFACING - REFER TO DETAIL 3/L-18
- (Hatched pattern) BARK MULCH SURFACING
- (Hatched pattern) TYP PLANTING BED - REFER TO DETAILS L-18
- (Hatched pattern) SOD, AS PER CITY OF WINNIPEG SPEC. CW 3510-R9

GENERAL LAYOUT NOTES:

- ALL EXISTING TREES TO BE PROTECTED
- LAYOUT OF PATHWAYS AND POURED IN PLACE CONCRETE TO BE CONFIRMED ON SITE BY LANDSCAPE ARCHITECT PRIOR TO CONSTRUCTION.
- LOCATION OF ALL SITE FURNISHINGS, INCLUDING BENCHES, WASTE RECEPTACLES, FENCING AND BIKE RACKS TO BE CONFIRMED ON SITE BY LANDSCAPE ARCHITECT PRIOR TO INSTALLATION.

REV	YY / MM / DD	DESCRIPTION	BY
1	12 / 08 / 16	ISSUED FOR TENDER	DKM
0	12 / 07 / 19	ISSUED FOR TENDER	DKM

A. SECTION LETTER OR DETAIL NUMBER.
B. DRAWING WHERE SECTION OR DETAIL IS DRAWN.

OR

A. DRAWING WHERE SECTION OR DETAIL IS INDICATED.
--- SECTION OR DETAIL SHOWN ON SAME DRAWING.

(A B) (A ---)

SEAL

DEREK K. MURRAY
Member no. 63

CLIENT

CITY OF WINNIPEG
PLANNING, PROPERTY AND DEVELOPMENT DEPARTMENT
300 - 65 GARRY ST. R3C 4K4

SCATLIFF + MILLER + MURRAY INC.
TEL 204 927-3444
FAX 204 927-3443
1120 - 201 PORTAGE AVENUE
WINNIPEG, MB, CANADA

PROJECT		KELVIN RECREATION SITE	
TITLE		GENERAL ARRANGEMENT PLAN	
DESIGN	DRAWN	DATE - Y / M / D	SCALE
DKM/CD	AH/MB	12/07/19	1:200
CHECKED	APPROVED	PROJECT NO.	DRAWING NO.
DKM	DKM	11-0107-22	L-02