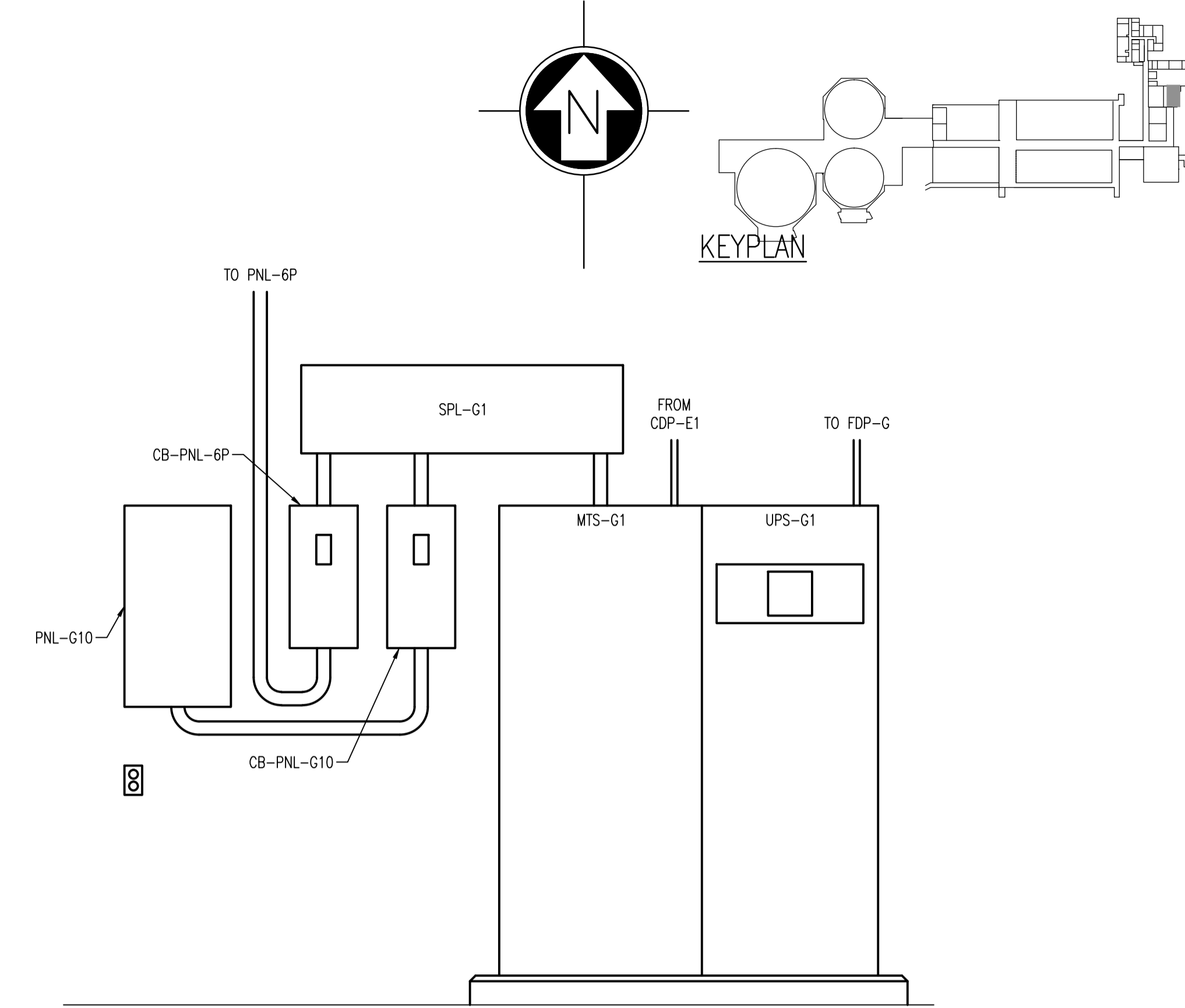
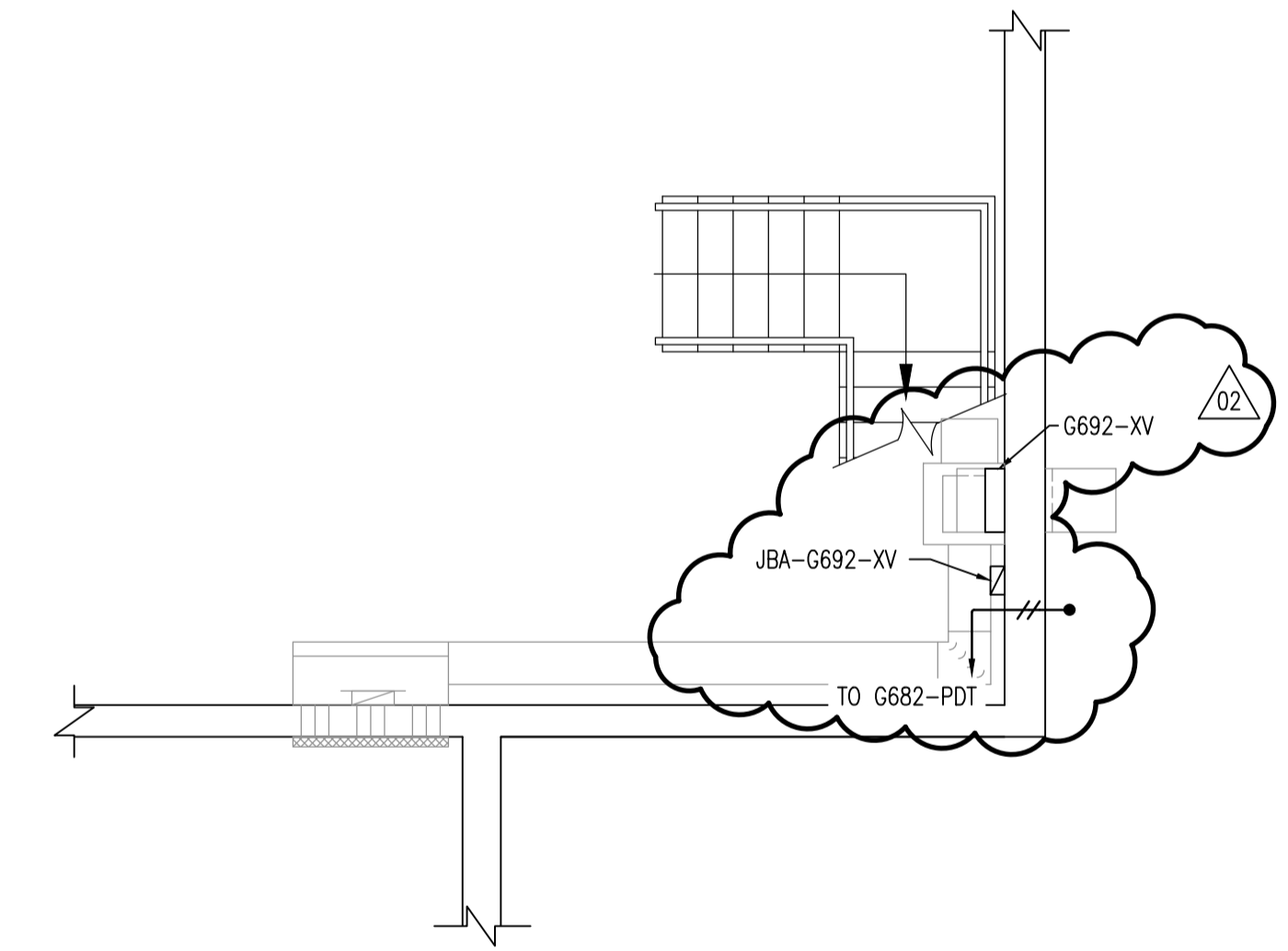


GRIT AREA ELECTRICAL ROOM
 SCALE: 1 : 30



UPS ELEVATION
 SCALE 1:15

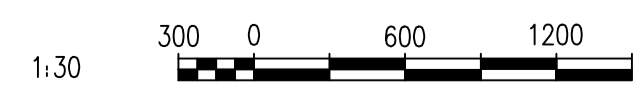


MOTOR ROOM
 SCALE: 1 : 50

NO.	REMOVAL NOTES
(A)	REMOVE ABANDONED FLUSH MOUNT PANEL IN MOTOR ROOM.
(B)	REMOVE EXISTING CONDUIT FEEDING ABANDONED PANEL IN MOTOR ROOM BACK TO EXISTING JUNCTION BOX.

NO.	CONSTRUCTION NOTES
(1)	MODIFY MCC-1G AND MCC-2G AS SHOWN ON OTHER DRAWINGS.
(2)	ATTACH SAMPLE TUBING TO CEILING.
(3)	FOR BUILDING WALL PENETRATION, SEE DETAIL ON 1-0102G-A0128.
(4)	FIRE STOP THE AREA ABOVE THE SOUTH DOOR. USE APPROVED FIRE STOPPING BLOCKS AND FIRE STOPPING SEALANT AS REQUIRED TO COMPLETELY SEAL OPENING.
(5)	FIRE STOP EXISTING PIPES AND CONDUIT PASSING THROUGH ELECTRICAL ROOM WALLS. APPROXIMATE LOCATIONS: 7.
(6)	COORDINATE WITH MECHANICAL DUCTWORK FOR REPAIR OF EXISTING WALL.

NOTES:
 1. THIS DRAWING IS BASED ON THE EXISTING LAYOUT OF THE ELECTRICAL ROOM.



NO.	REVISIONS	DATE	DESIGN	CHECK
02	ISSUED FOR TENDER, BID OPP. 545-2012	2012/09/10	TMC	CJR
01	ADDED UPS-G1 AND ASSOCIATED EQUIPMENT	2011/03/11	TMC	CJR
00	ISSUED FOR TENDER, BID OPP. 837-2009	2009/12/07	NB	CJR

SNC-LAVALIN INC.
 148 Nature Park Way
 Winnipeg, MB, Canada R3P 0X7
 204-786-8080

DESIGNED BY: EXISTING/N. BRADDO
 DRAWN BY: E. BOHNCKE
 CHECKED BY: C. REIMER
 APPROVED BY: C. REIMER

SCALE: AS NOTED
 DATE: 2009/12/07
 CONSULTANT NO.: 112577-0105-47DD-0103

THE CITY OF WINNIPEG
 WATER AND WASTE DEPARTMENT

SOUTH END WATER POLLUTION CONTROL CENTRE
 ESSENTIAL SYSTEM UPGRADES
 PLAN LAYOUT
 GRIT BUILDING ELECTRICAL ROOM

CITY DRAWING NUMBER: 1-0102G-E0007
 SHEET: 001
 REV: 02
 SIZE: A1