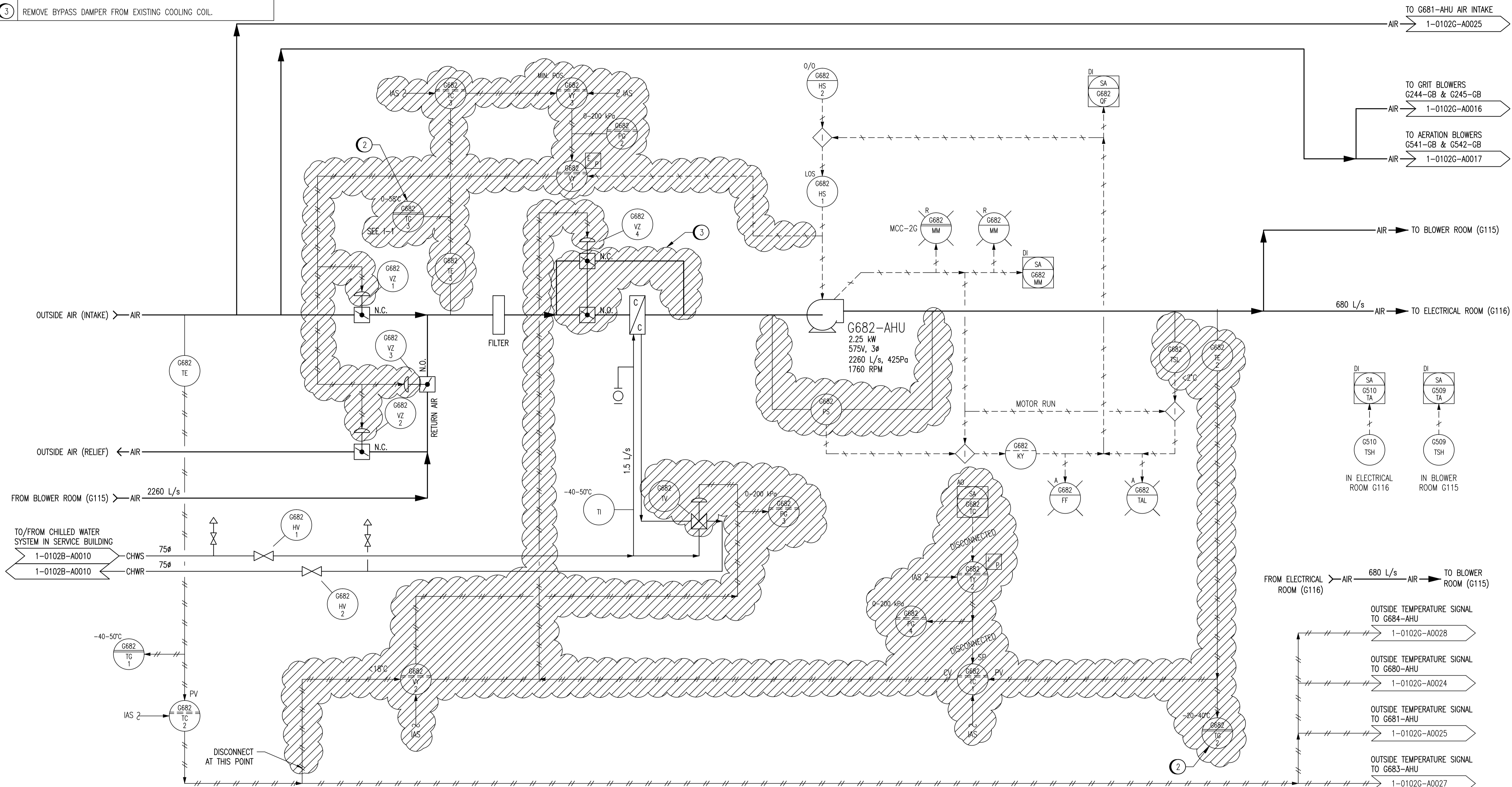


REMOVAL NOTES

- 1 REMOVE ALL TUBING AS SHOWN. LEAVE DISCONNECTED COMPONENTS IN GCP-7 AND LABEL AS SPARE. REMOVE FIELD INSTRUMENTS AND REPAIR DUCTS AS REQUIRED. ENSURE REMAINING EQUIPMENT AND TUBING IN PANEL ARE NOT DAMAGED IN THE PROCESS.
- 2 REMOVE GAUGE FROM DOOR AND COVER HOLE WITH METAL PLATE WITH SAME FINISH AS EXISTING CABINET.
- 3 REMOVE BYPASS DAMPER FROM EXISTING COOLING COIL.

INCONSISTENCIES:
I-1 G682-TG3 IS LABELLED G682-PG4 AT SITE.



NOTES:

- 1. THIS DRAWING SUPERSEDES PART OF DRAWING SEP-868.
- 2. ALL INSTRUMENTS SHOWN IN AN AUXILIARY LOCATION ARE LOCATED IN HVAC CONTROL PANEL GCP-7 UNLESS OTHERWISE DESIGNATED.



DESIGNED BY:	T. CHURCH	CHECKED BY:	C. REIMER
DRAWN BY:	M.J. PERSSON	APPROVED BY:	C. REIMER
SCALE:	NTS	RELEASED FOR CONSTRUCTION BY:	N. HARRINGTON
DATE:	2012/01/16	DATE:	2012/10/11
ISSUED FOR TENDER, BID OPP. 545-2012	2012/10/11	TMC	CJR
NO. REVISIONS	DATE	DESIGN	CHECK

SNC-LAVALIN INC.
148 Nature Park Way
Winnipeg, MB, Canada R3P 0X7
204-786-8080

CONSULTANT NO.: 112577-0116-49DD-0125

ENGINEER'S SEAL

THE CITY OF WINNIPEG
WATER AND WASTE DEPARTMENT

SOUTH END WATER POLLUTION CONTROL CENTRE
PUMP & SCREEN BUILDING
PROCESS & INSTRUMENTATION DIAGRAM
ELECTRICAL ROOM AND BLOWER ROOM COOLING UNIT
G682-AHU - DEMOLITION

CITY DRAWING NUMBER: 1-0102G-A0026
SHEET: D01
REV: 00
SIZE: A1