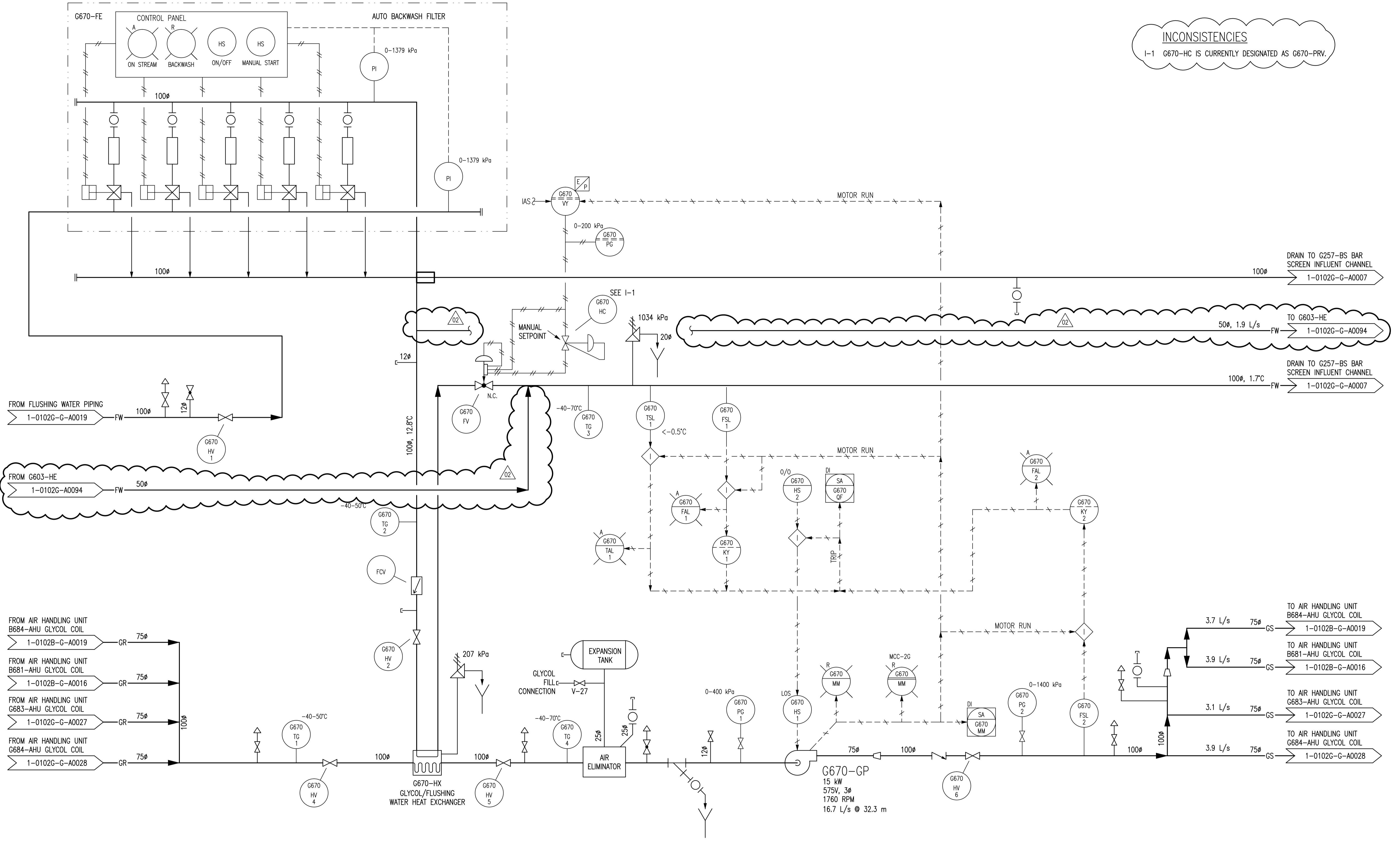


INCONSISTENCIES
I-1 G670-HC IS CURRENTLY DESIGNATED AS G670-PRV.



- NOTES:**
1. THIS DRAWING SUPERSEDES PART OF DRAWING SEP-866.
 2. ALL INSTRUMENTS SHOWN IN AN AUXILIARY LOCATION ARE LOCATED IN GCP-9.



NO.	REVISIONS	DATE	DESIGN	CHECK
02	ISSUED FOR TENDER, BID OPP. 545-2012	2012/10/11	TS	CJR
01	ORIGINAL DWG NO. WAS 1-0102G-G-A0022-001	2010/07/26	-	DC
00	ISSUED FOR CITY USE	2006/11/28	-	EFB

		SNC-LAVALIN INC. 148 Nature Park Way Winnipeg, MB, Canada R3P 0X7 204-786-8080		ENGINEER'S SEAL
DESIGNED BY:	EXISTING	CHECKED BY:	EFB	
DRAWN BY:	DAH/EFB	APPROVED BY:	CJR	
SCALE:	NTS	RELEASED FOR CONSTRUCTION BY:		
DATE:	2005/11/08	DATE:		
CONSULTANT NO.:	112577-0116-49DD-0128			

THE CITY OF WINNIPEG
 WATER AND WASTE DEPARTMENT

SOUTH END WATER POLLUTION CONTROL CENTRE
 PUMP & SCREEN BUILDING
 PROCESS & INSTRUMENTATION DIAGRAM
 GLYCOL HEAT RECOVERY
 G670-GP

CITY DRAWING NUMBER: **1-0102G-A0022** SHEET: **001** REV: **02** SIZE: **A1**