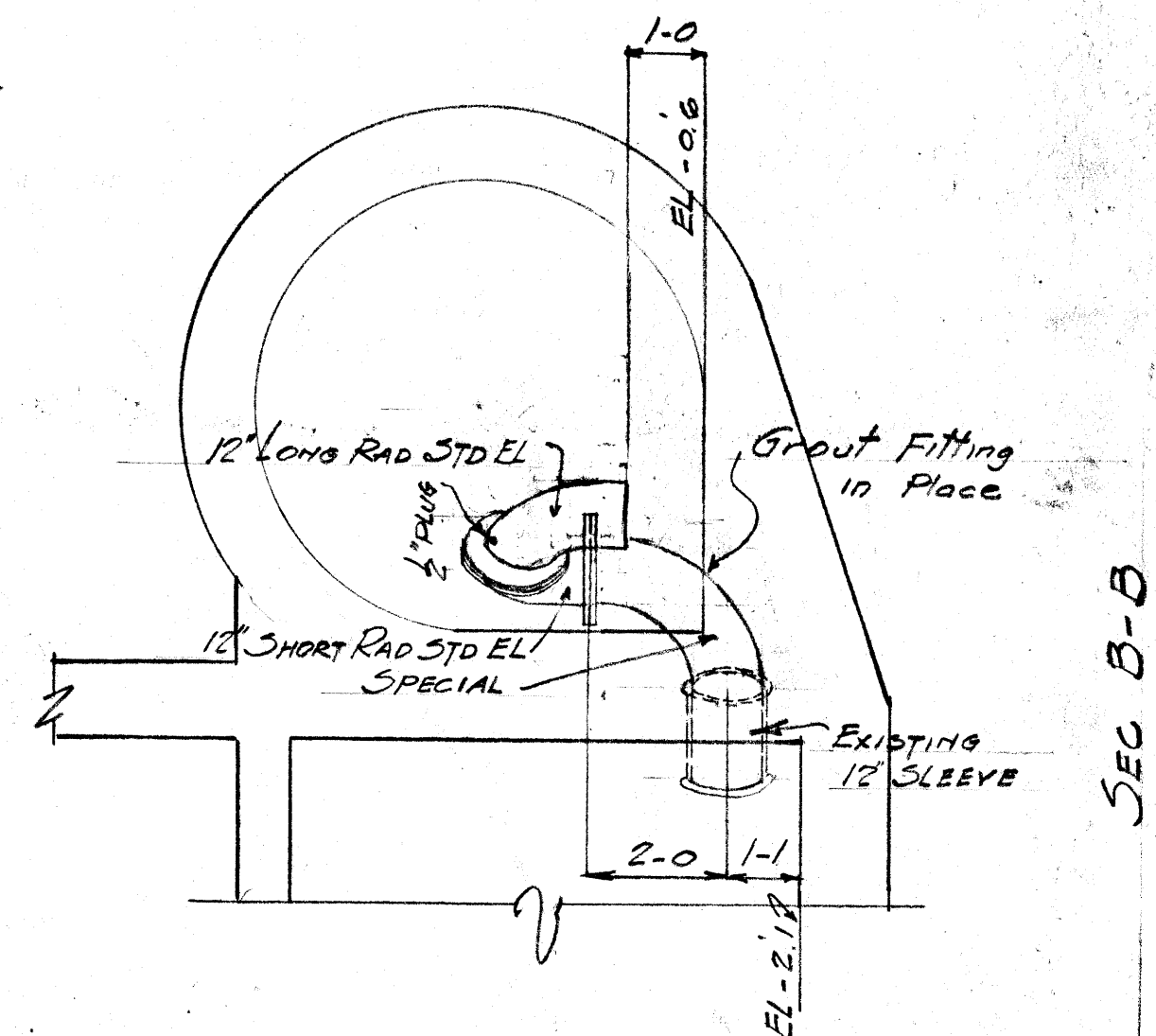
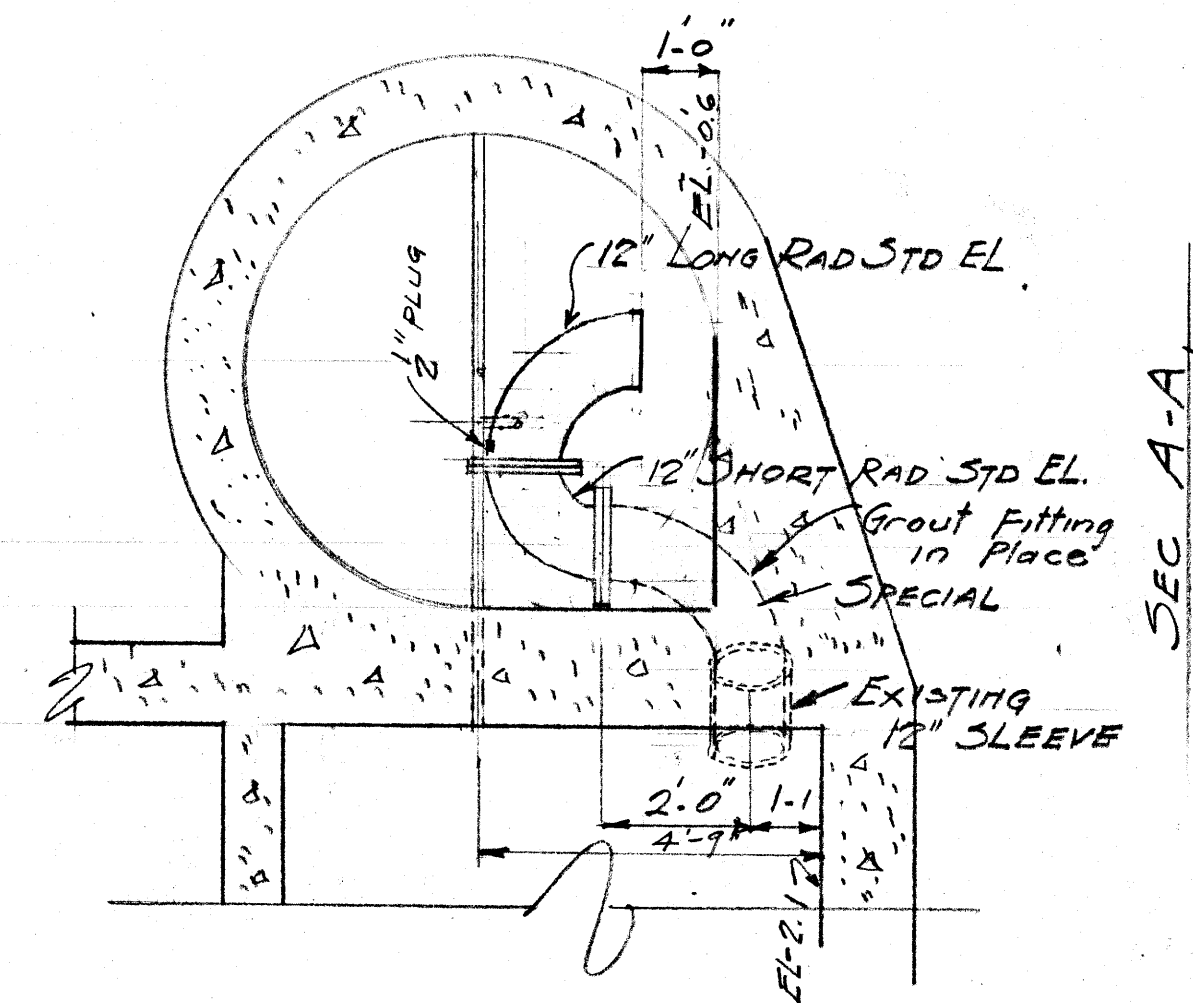


SECTIONAL PLAN THROUGH PUMP ROOM & SUMP.  
SHOWING NEW SUCTION PIPING FOR PUMPS.



NOTE - ALL FITTINGS STD. C.I.

**APPROVED FOR CONSTRUCTION**  
DATE.....  
Approval of this drawing covers only the design and arrangement of material or equipment and does not in any way relieve the Contractor of any liability or responsibility.

| GREATER WINNIPEG SANITARY DISTRICT |                     |          | TITLE DETAILS OR REV. |  |
|------------------------------------|---------------------|----------|-----------------------|--|
| W. S. LEA<br>ENGINEERING BOARD     | Consulting Engineer | APPROVED | DATE                  | SUGTION PIPING FOR<br>AUDREY ST. PUMPING STATION |
| W. P. SPEERSON, Chief Engineer     |                     |          |                       | Scale: 3/4" = 1'-0" Date: AUG 5/68               |
| NELSON BARNETT                     |                     |          |                       | Drawn By: JFM                                    |
| J. W. BATTERSILL                   |                     |          |                       | Checked By: M. 91                                |
| C. E. LANDON                       |                     |          |                       | Approved By: [Signature]                         |
| W. D. HUBERT, Secretary            |                     |          |                       | Scale: 3/4" = 1'-0"                              |
| NOTES:                             |                     |          | Micro-Filmed 1965     |  |

M-091