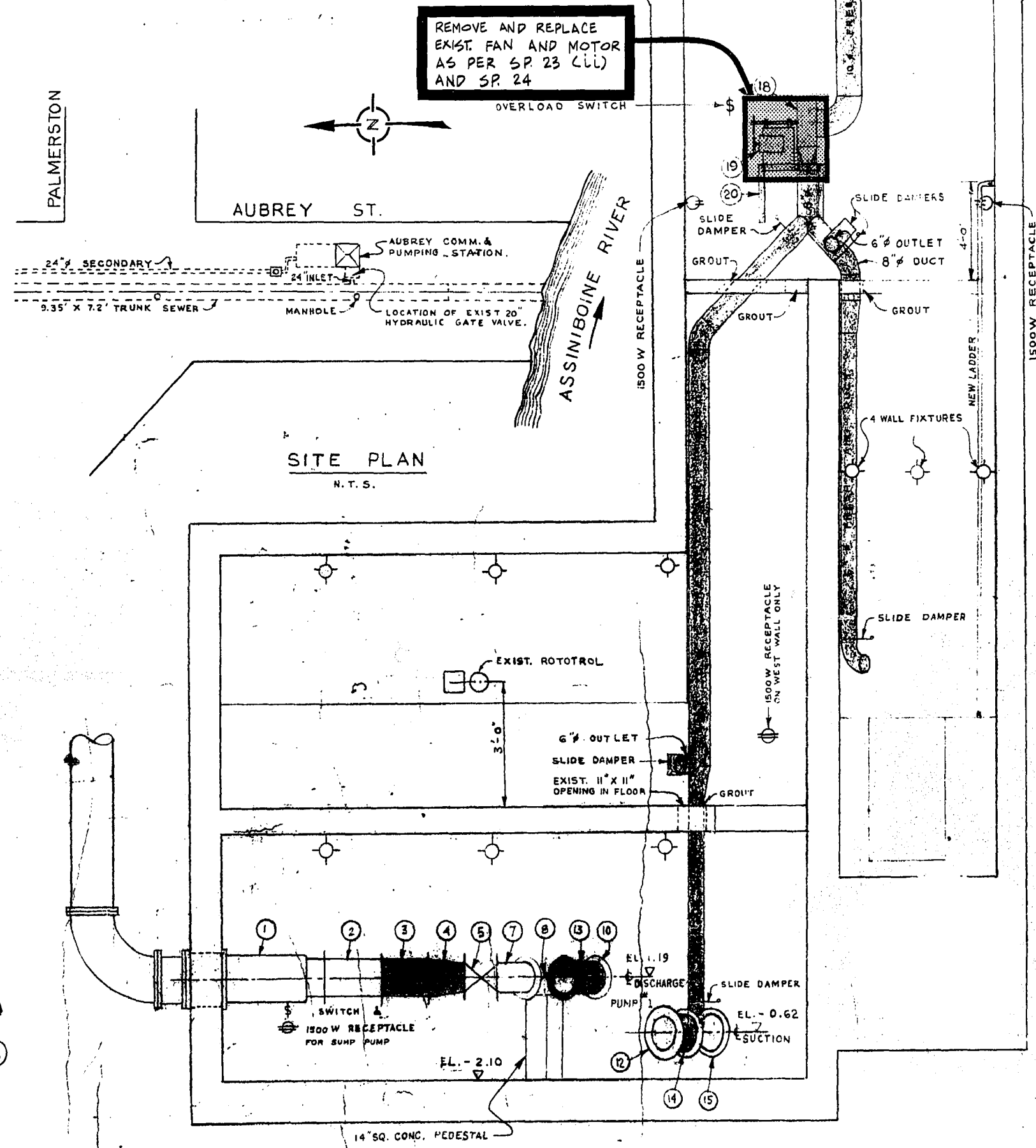
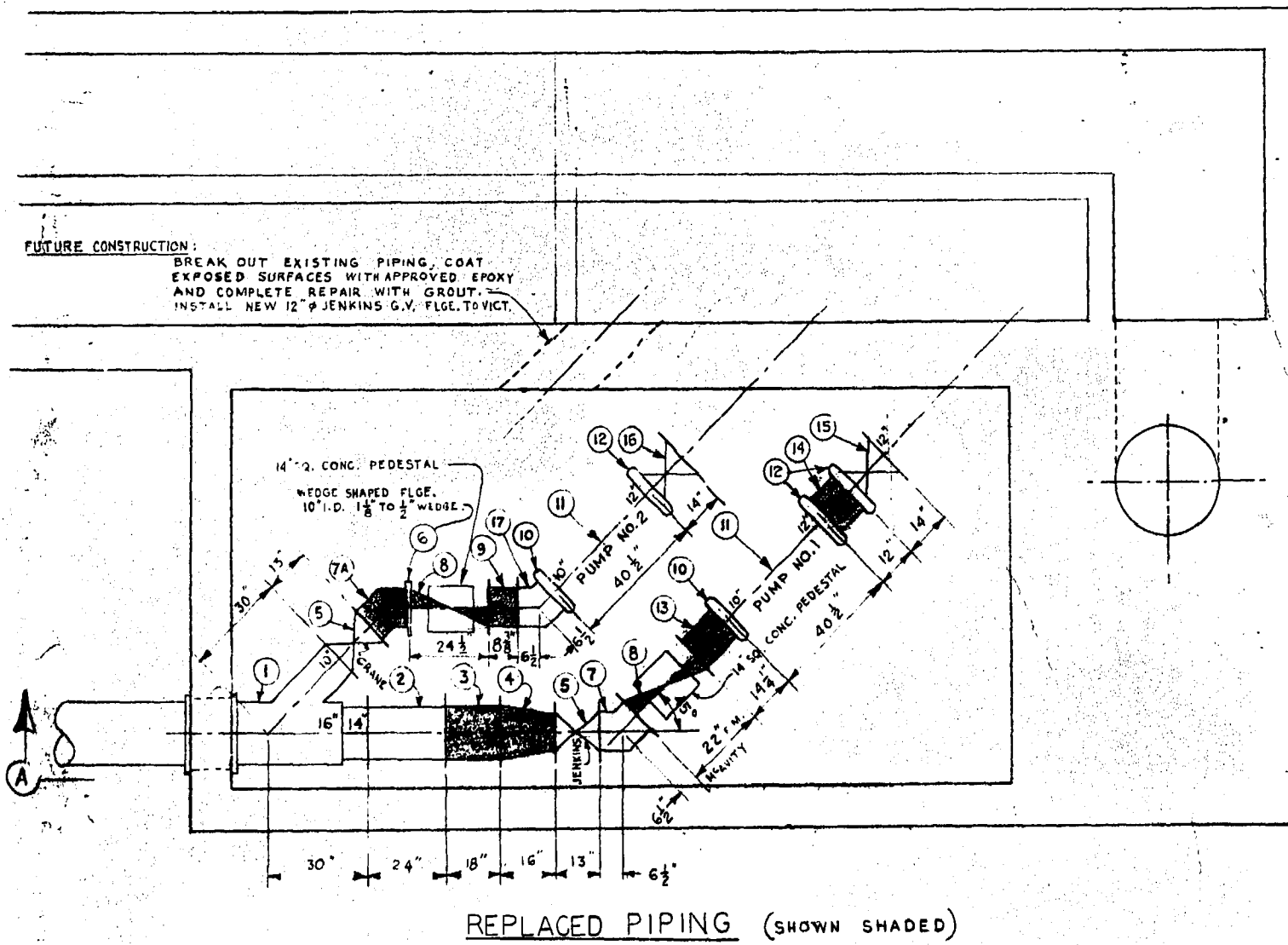
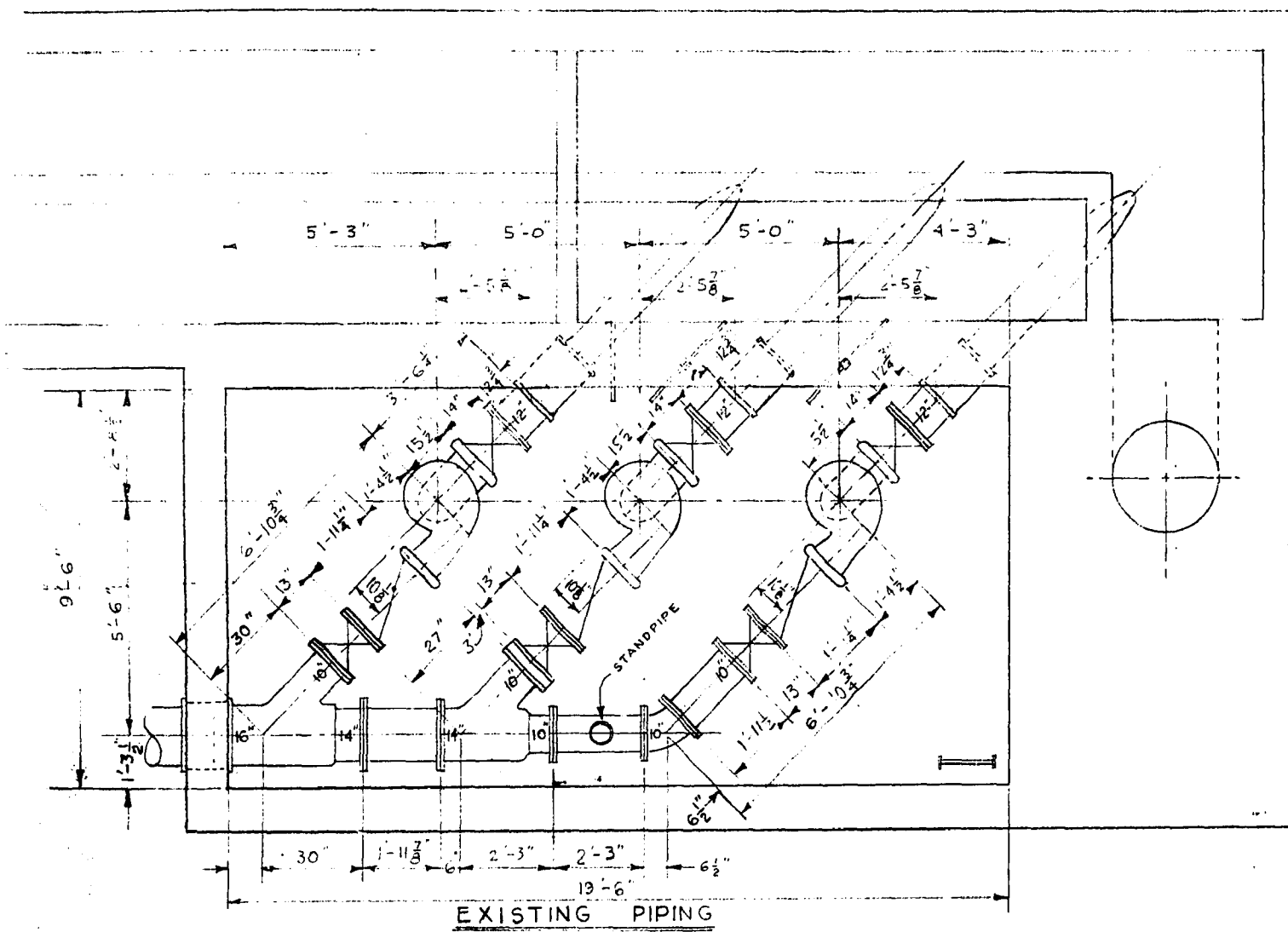
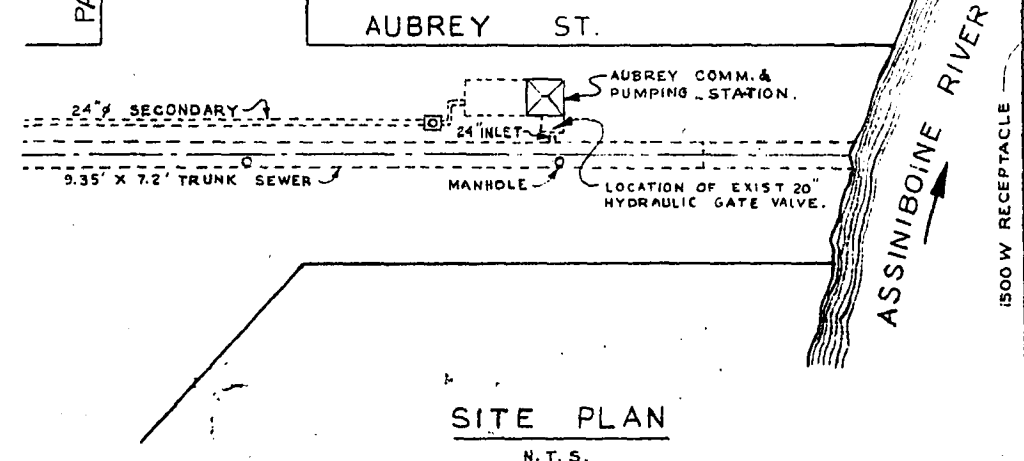


REF. OF DRAWING NO. **498A**  
 DETAILS  
 FILE # **SP 10105**

- NOTES**
- 1 REMOVE EXISTING FRESH AIR DUCTS, FAN, MOTOR & SUPPORTS. INSTALL NEW FRESH AIR DUCTS, FAN, MOTOR & SUPPORTS AS SHOWN SHADED ON DRAWING. DO NOT REMOVE EXIST. EXHAUST DUCT ON WEST WALL.
  - 2 METRO TO SUPPLY 2 MONARCH PUMPS WITH SHAFTS & MOTORS & 1-20" ENKINS HYDRAULIC GATE VALVE. NOT SHOWN ON DRAWING. INSTALLATION BY CONTRACTOR.
  - 3 CONTRACTOR IS RESPONSIBLE FOR ALL NECESSARY PUMP & PIPING SUPPORTS.
  - 4 ALL GROUT SHALL BE NON-SHRINKABLE FERROCHLORT OR APPROVED EQUAL.
  - 5 ALL PIPING CLASS 22 CAST IRON.

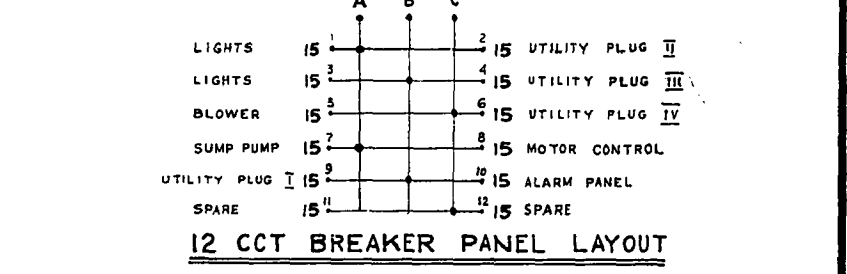


PALMERSTON

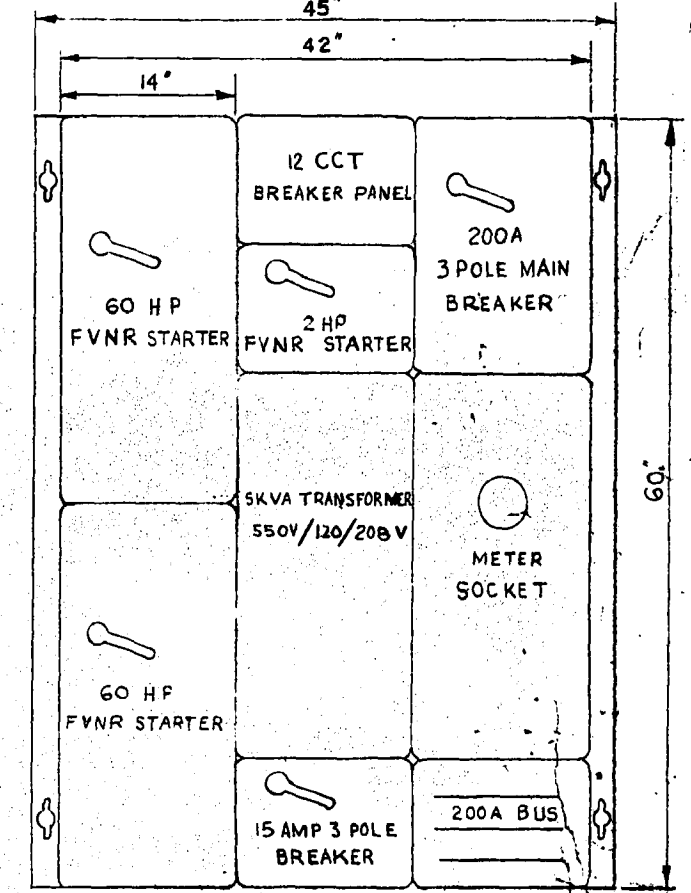


**MATERIAL LIST**

NO.	QTY	SIZE	DESCRIPTION	END	LENGTH	REMARKS
1	1	16x14x10 1/2	C.I. TEE	FLGE. - FLGE.		EXISTING
2	1	14"	C.I. FILLER	" - "	24"	
3	1	14"	C.I.	" - "	8"	NEW
4	1	14x10 1/2	C.I. REDUCER	" - "	16"	
5	2	10"	C.I. GATE VALVES (ENKINS)		13"	EXISTING
6	1	10"	C.I. FILLER WEDGE SHAPED	FLANGE		WEDGE NEW
7	1	10"	C.I. ELBOWS	FLGE. - FLGE.	5 1/2"	EXIST. NEW
8	1	10"	C.I. CHECK VALVES (MAYNE)		24"	NEW
9	1	10"	C.I. FILLER	" - "	5 3/8"	NEW
10	1	10"	METALLIC COUPLINGS			EXIST. REPLACE
11	1	12x10 1/2	MONARCH PUMPS	7 1/2" VICT	40 1/2"	NEW
12	2		METALLIC COUPLINGS			EXIST. REPLACE
13	1	1 1/2"	C.I. FILLER	FLGE. - VICT	4 1/2"	NEW
14	1	1 1/2"	C.I. GATE VALVE (JENKINS)	FLGE. - VICT	14"	EXISTING
15	1	1 1/2"	C.I.	CRAME VICT - FLGE.	14"	
16	1	10"	C.I. EL BOW	FLGE. - VICT	12"	NEW
17	1	10"	FAN (SEE SP 23(L) & SP 24)			DUAL SPEED
18	1	2x2x1/2 L	MOTOR (SEE SP 23(L) & SP 24)			WALL MOUNTED
19	1	2x2x1/2 L	SUPPORT			
20	1	2x2x1/2 L	SUPPORT			
21	1	20 SUIT	CARNES ALUM LOUVER MODEL L-36			
22	1	10"	EL BOW	FLGE. - FLGE.	13 3/4"	SPECIAL CASTING



- LIST OF FIXTURES**
- PUMP FLOOR - 3 CEILING FIXTURES; SUMP PUMP 1/2 HP 120 V. SUBM. (OVERLOAD DISCONNECT PLUS PLUS)
  - PUMP MOTOR FLOOR - 3 CEILING FIXTURES; UTILITY PLUG I
  - COMM MOTOR FLOOR - 2 CEILING FIXTURES; UTILITY PLUGS II III BLOWER (OVERLOAD DISCONNECT)
  - VALVE CHAMBER - 1 WALL FIXTURE
  - COMM CHAMBER - 4 WALL FIXTURES
  - TOP FLOOR - 2 CEILING FIXTURES; UTILITY PLUG IV; 2 POLE LIGHTING SWITCH (2 SPEED SELECTROL SWITCH FOR BLOWER)



**ELECTRICAL DISTRIBUTION CENTER (KLOCKNER MOELLER)**  
 LOCATE ON NORTH WALL OF SUPERSTRUCTURE

THE METROPOLITAN CORPORATION OF GREATER WINNIPEG  
**WATERWORKS & WASTE DISPOSAL DIVISION**  
 PENMAN - DIRECTOR

SE W A G E   D I S P O S A L   D E P T.  
**ALTERATIONS TO AUBREY ST. COMM. & PUMPING STATION**

DESIGNED BY: *[Signature]*  
 DATE: 27 NOV 20  
 DRAWING NO. **498A**  
 MICROFILMED 1972