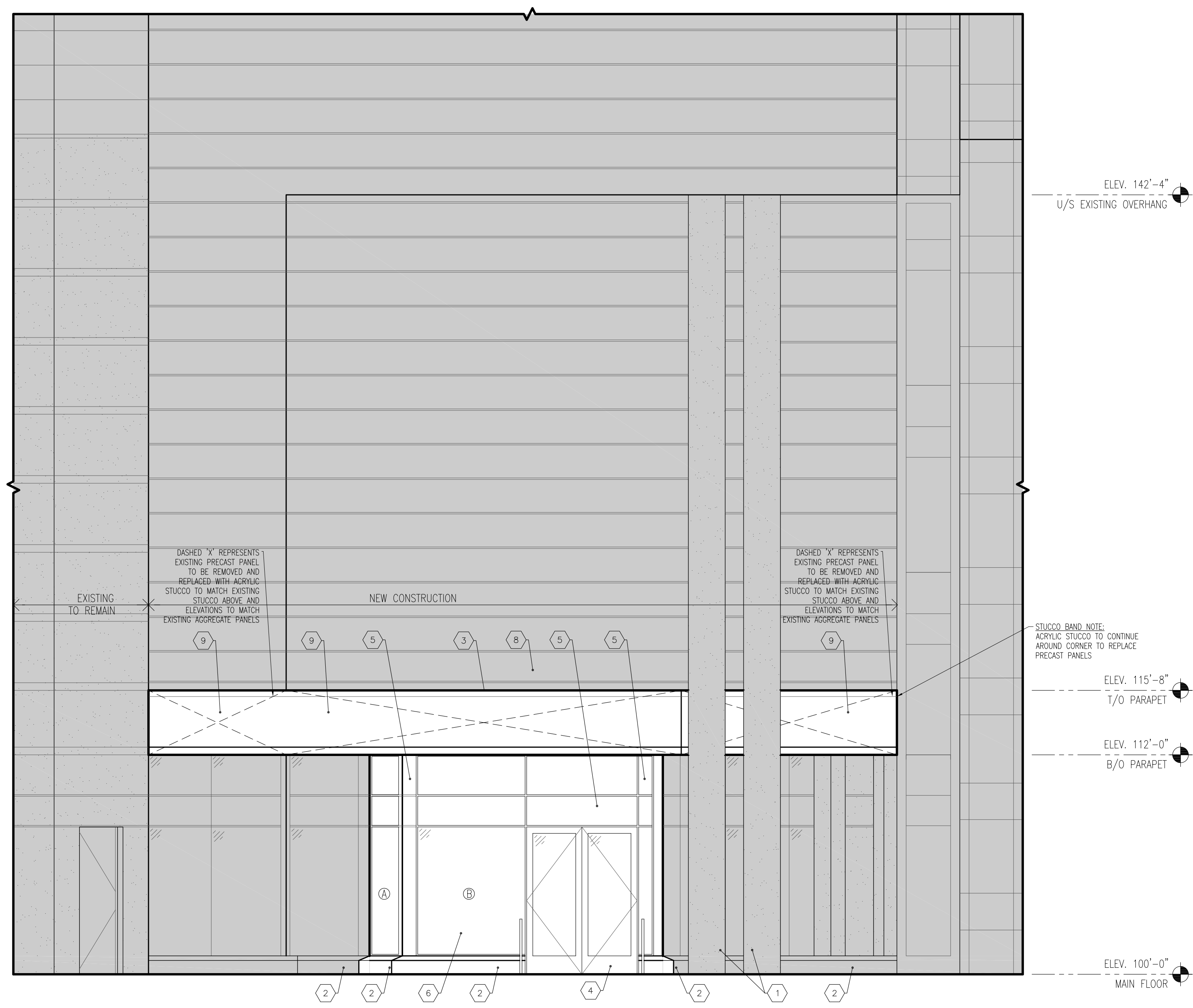
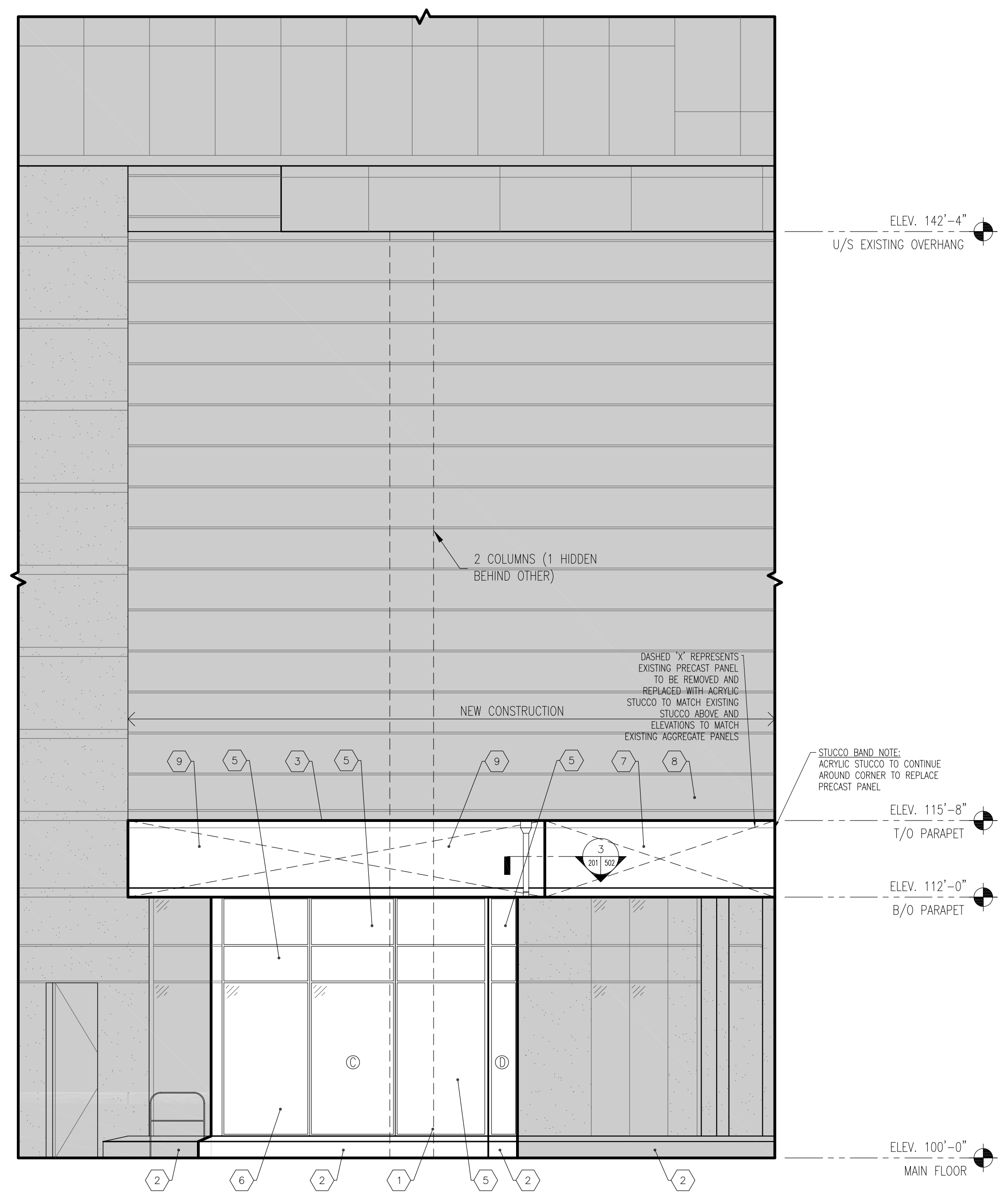


EXTERIOR ELEVATION LEGEND	
1	24" DIAMETER CONCRETE COLUMN
2	CONCRETE CURB
3	PARAPET FLASHING
4	6'-0" DOUBLE DOOR (METAL TO MATCH COLOR OF EXISTING SPANDREL)
5	SPANDREL (COLOR TO MATCH EXISTING SPANDREL)
6	GLAZING
7	EXISTING PRECAST PANELS
8	EXISTING STUCCO
9	NEW STUCCO (TO MATCH EXISTING)
Ⓕ	REFER TO A103 - FRAME ELEVATION STYLES



1 SOUTH ELEVATION
1/8" = 1'-0"



2 EAST ELEVATION
1/8" = 1'-0"

0 ISSUED FOR TENDER JJ 12/20

NO.	REVISIONS	BY	YR.M.D.Y

The contractor shall check all dimensions and other data from the job and report any discrepancies to the architects before proceeding. This drawing and the information on it, is proprietary and confidential. Reproduction of any sort is prohibited without the written approval of MMP Architects Inc.

PROJECT TITLE
Southwest Entrance Development
Millennium Library, 251 Donald Street
 251 Donald Street, Winnipeg, MB

BID OFF NUMBER: 517-2012

DRAWING TITLE
Exterior Elevations



300 - 214 McDermot Avenue, Winnipeg Manitoba R3B 0S3
 Tel (204) 956-0530 Fax (204) 943-5704 www.mmparchitects.com

APPROVED	CHECKED	DRAWN BY
CD	CD	DP
SCALE	DATE	FILE NO.
AS NOTED	July 2012	2012-19

DRAWING NUMBER	REVISION NUMBER
A201	0
CAD FILE: 2012-19-201 Exterior Elevations.dwg	DRAWER NO. -