

GENERAL NOTES:

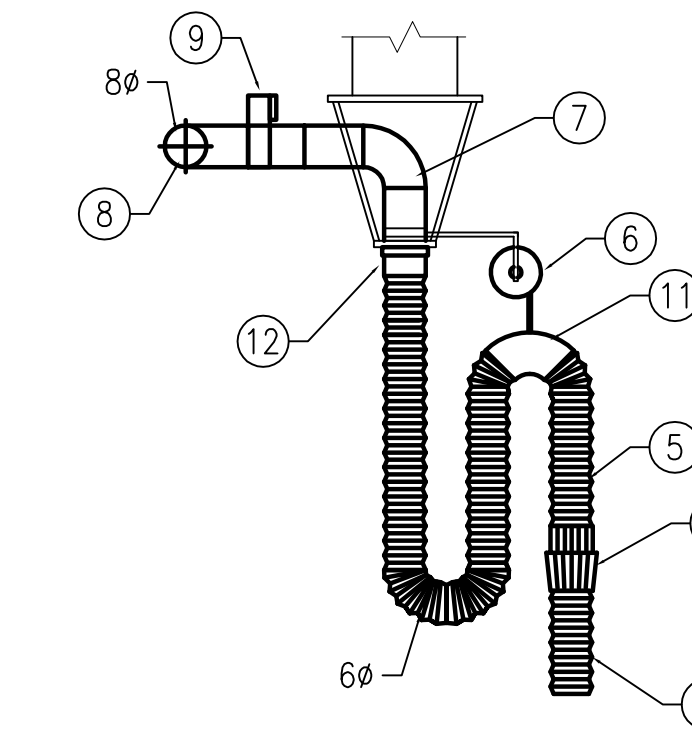
- A. CONTRACTOR TO VERIFY EXACT LOCATION AND DIMENSIONS OF NEW DUCTWORK ON SITE PRIOR TO INSTALLATION AND FABRICATION. REPORT ANY DISCREPANCY TO THE CONTRACT ADMINISTRATOR.
- B. DO NOT SCALE OFF THIS DRAWING. THIS DRAWING ONLY SHOWS THE GENERAL SCHEMATIC OF NEW SYSTEM.
- C. CONTRACTOR SHALL INCLUDE FOR AND PROVIDE ALL COORDINATION BETWEEN TRADES AND CONTRACT ADMINISTRATOR ON AND OFF SITE AS REQUIRED FOR INSTALLATION OF MECHANICAL SYSTEMS.
- D. REFER TO SPECIFICATION ON THIS SHEET FOR PART NUMBERS OF NEDERMAN EXHAUST EXTRACTION SYSTEM COMPONENTS.
- E. COORDINATE DUCT, HOSE AND BALANCER LOCATIONS AND RANGE OF MOVEMENT WITH EXISTING SERVICES (OVERHEAD REELS FOR OILING/LUBRICATION), LIGHT FIXTURES, AND STRUCTURAL BUILDING MEMBERS.

DRAWING NOTES: (#)

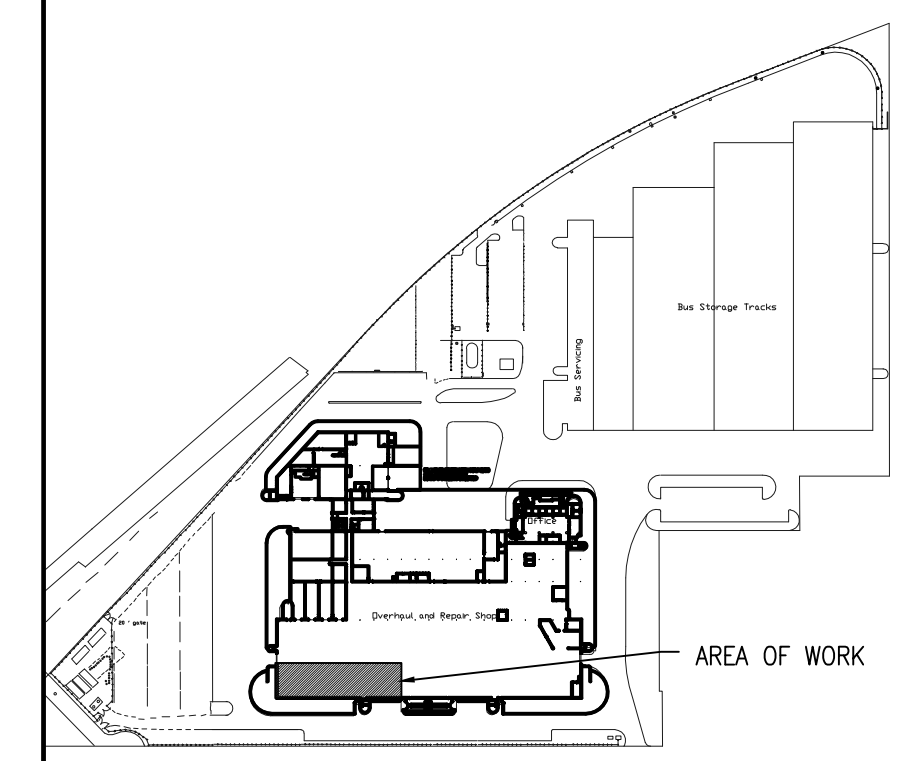
- 1. TAIL PIPE EXHAUST HOSE C/W BALANCER CONNECTED TO TRUNK DUCT. DUCT TO BE INSTALLED 16'-0" ABOVE FLOOR. (TYPICAL OF 11). AVERAGE EXHAUST RATE PER TAIL PIPE 700 CFM. REFER TO DETAIL 3/M1.1.
- 2. DUCT UP THROUGH ROOF. RE-INFORCE ROOF DECK AS PER SPECIFICATION DETAIL S-1.
- 3. TAIL PIPE EXHAUST FAN MOUNTED ON ROOF ABOVE. FAN SHALL OPERATE ON BMS SCHEDULE
- 4. LEAVE EXTRACTION HOSE OPEN ENDED. THE CITY FABRICATE CUSTOM NOZZLE/CANOPY AND INSTALL WITH OWN FORCES.
- 5. SINGLE HOSE EXTRACTOR, FOR BUS SERVICE STALLS. (TYPICAL OF 11).
- 6. HOSE BALANCER. (TYPICAL OF 11).
- 7. SHEET METAL DUCT WORK BY DIVISION 15.
- 8. CONNECT TO TRUNK DUCT.
- 9. BLAST GATE, BALANCING DAMPER. BLAST GATE SHALL BE FULL COLLAR, CAST ALUMINUM WITH GALVANIZED SIDES.
- 10. BREAKAWAY DEVICE.
- 11. METAL ELBOW.
- 12. CLAMP.

SEQUENCE OF OPERATIONS:

- POWER FOR THE TWO NEW FANS EF-1/EF-2 WILL BE WIRED BY DIVISION 16 TO EXISTING MCC CELLS. THESE CELLS ARE ALREADY CONTROLLED BY THE BUILDING MANAGEMENT SYSTEM (BMS) ON A DAILY SCHEDULE.
- DIVISION 15 SHALL BE RESPONSIBLE FOR FINAL CONNECTIONS OF THE EXISTING BMS WIRING TO THE NEW MOTOR STARTERS FOR EF-1 AND EF-2. REFER TO SPECIFICATION SECTION 15900 CONTROL.



3 HOSE AND BALANCER DETAIL
M1.1 SCALE: N.T.S.



KEY PLAN
N.T.S.

NEDERMAN EXHAUST SYSTEM - PART LIST

| QTY | PART NO. | PART NO. DESCRIPTION |
|---------------------------|----------|----------------------------|
| BUS SERVICE STALLS | | |
| 11 | 20800631 | BALANCER SYSTEM |
| 11 | 20373798 | BREAKAWAY DEVICE |
| 11 | 20344593 | METAL ELBOW |
| 11 | 20823562 | EXHAUST HOSE 25 FT. LENGTH |
| 11 | 20373609 | CLAMP |

| | | | |
|-----|-------------------------------|----|----------|
| 7. | | | |
| 6. | | | |
| 5. | | | |
| 4. | | | |
| 3. | ISSUED FOR BID OPPORTUNITY | PG | 10/07/12 |
| 2. | ISSUED FOR REVIEW | PG | 04/07/12 |
| 1. | 90% ISSUED FOR OWNER'S REVIEW | PG | 27/06/12 |
| NO. | Revisions | BY | DD/MM/YY |

APECM
Certificate of Authorization
SMS Engineering Ltd.
No. 166 Expiry April 30, 2013

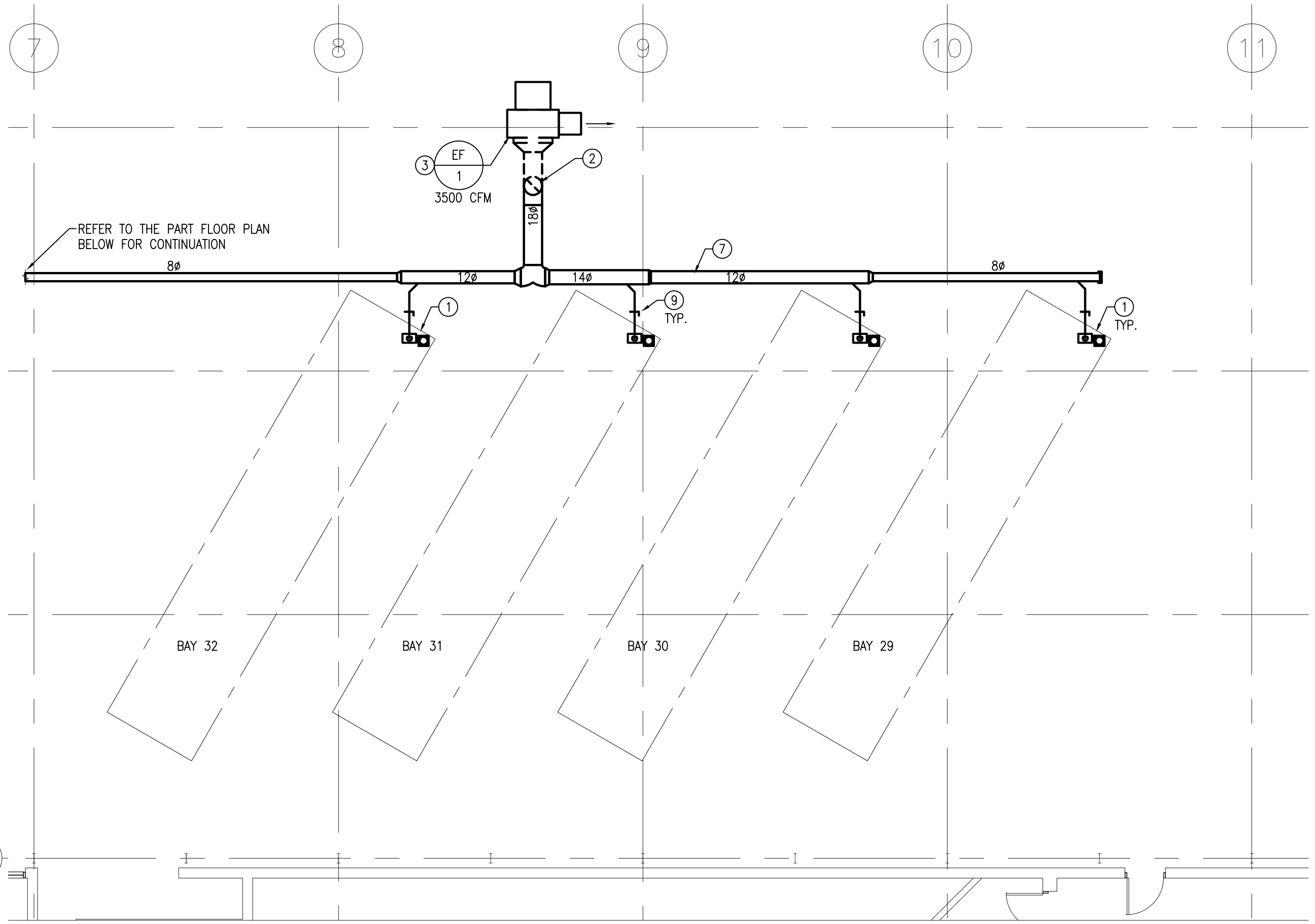
PROVINCE OF MANITOBA
P.G.V. P.W. GRYC
10 July 2013
REGISTERED PROFESSIONAL ENGINEER

SMS ENGINEERING
SMS Engineering Ltd. Consulting Engineers
770 Bradford Street Winnipeg MB Canada R3H 0N3
Telephone: 204-775-0291 Fax: 204-772-2153
sms@smseng.com

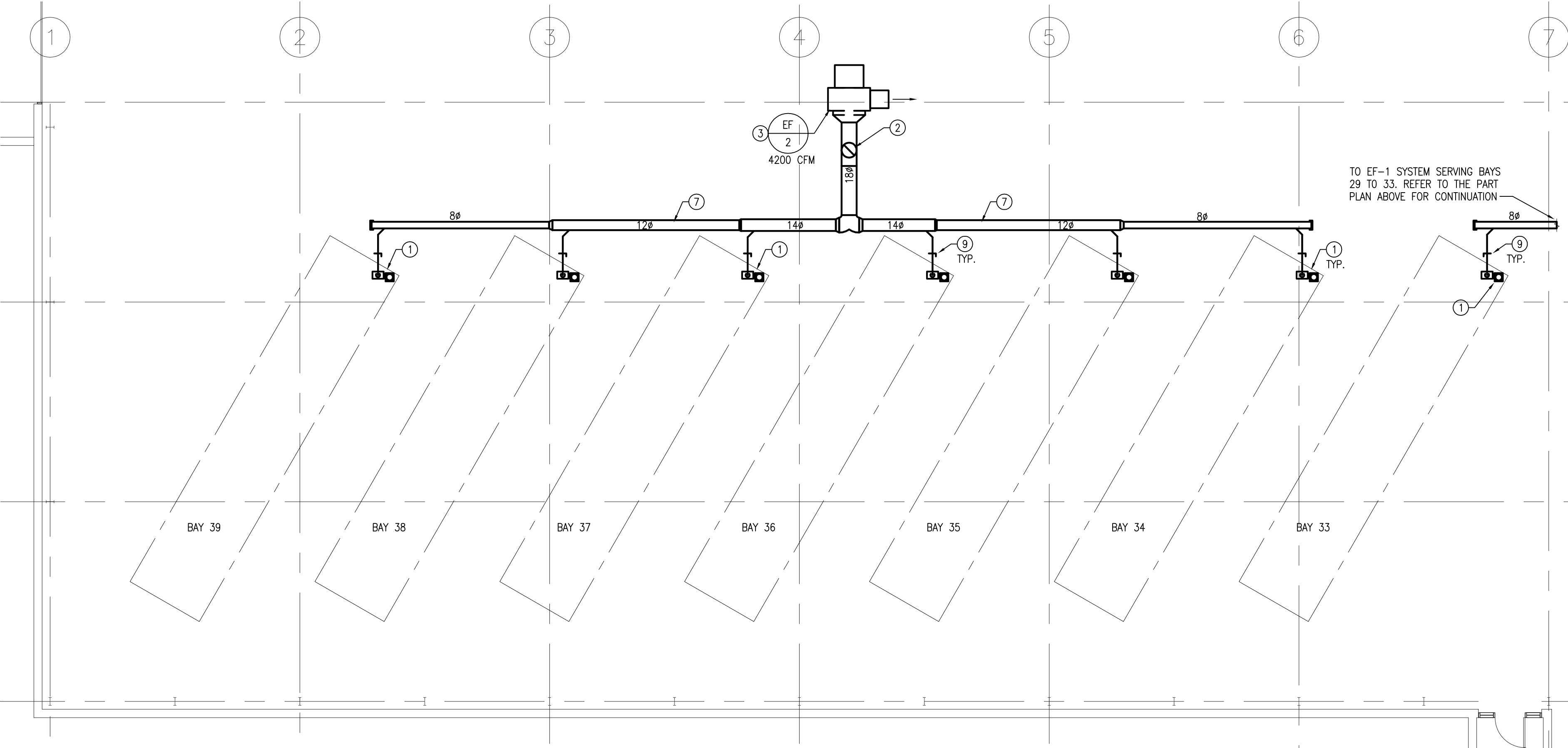
Project Title
**CITY OF WINNIPEG
TRANSIT GARAGE VEHICLE
EXHAUST UPGRADE**
WINNIPEG MANITOBA

Drawing Title
**PART MAIN FLOOR PLAN
EXHAUST SYSTEM LAYOUT
BAYS 29 TO 39**

| | | |
|-----------------------------|-------------------------------|--------------------------|
| Drawn By RNS/E | Checked By PWG | Approved By PWG |
| Scale AS NOTED | Date JUNE 2012 | Project No. 10-241-01 |
| Revision Number 3 | Drawing Number M1.1 | Sheet Order 1 OF 2 |



1 PART MAIN FLOOR REPAIR GARAGE PART PLAN (EAST - NEW)
M1.1 SCALE: 1/8"=1'-0"



2 PART MAIN FLOOR REPAIR GARAGE PART PLAN (WEST - NEW)
M1.1 SCALE: 1/8"=1'-0"