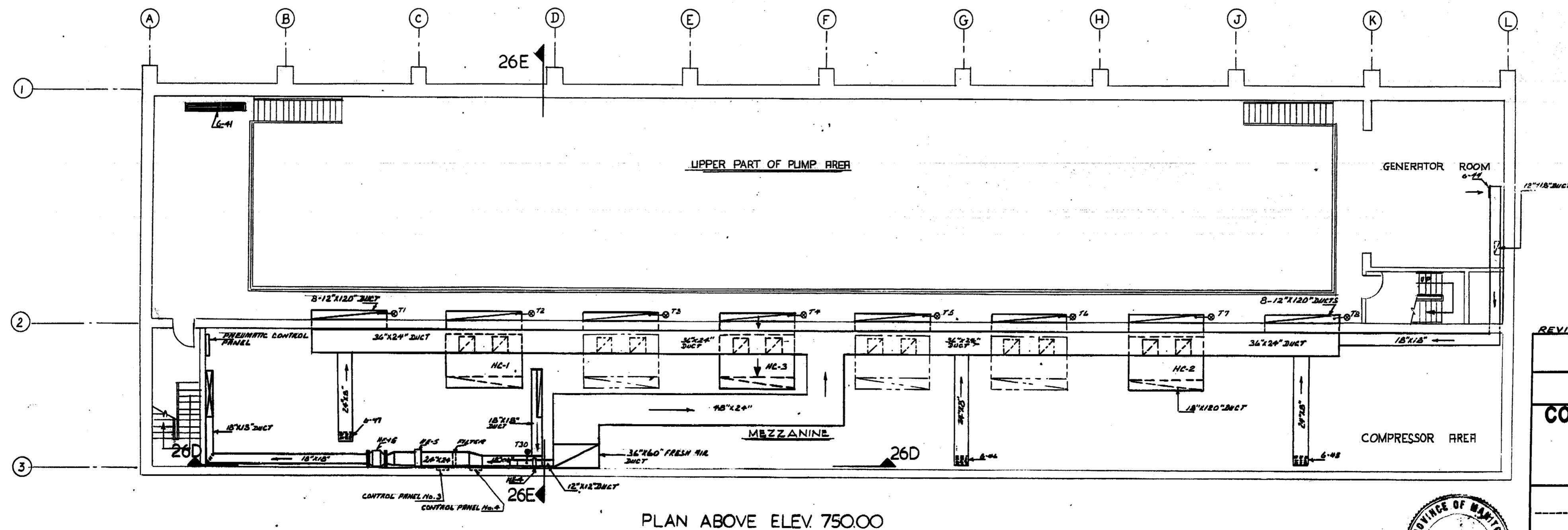
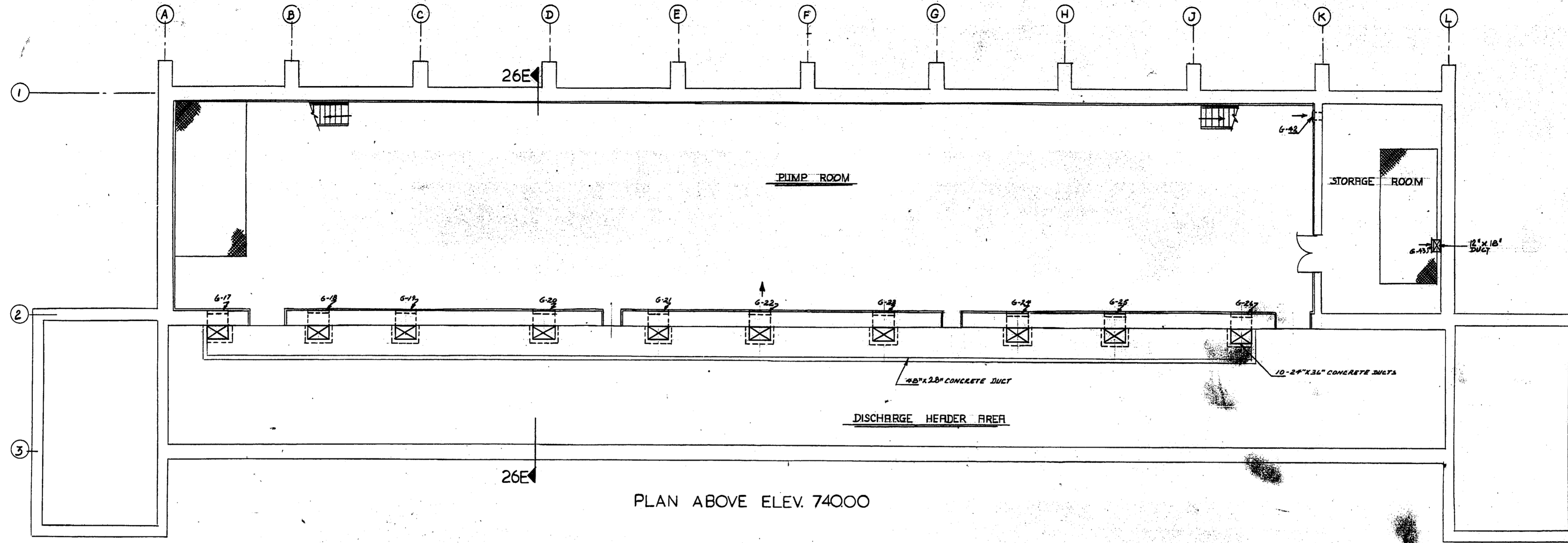


DETAILS HEATING & VENTILATING PLANS ABOVE
 ELEVATION 740.00 & 750.00



LEGEND

- FINES ----- NF
- ELECTRIC HEATERS ----- HE
- FAN-EXHAUST UNITS ----- HE
- GRILLES ----- G
- THERMOSTAT ----- T

REVISED AS BUILT, JUNE - 1965

THE METROPOLITAN CORPORATION OF GREATER WINNIPEG
 WATERWORKS AND WASTE DISPOSAL DIVISION

METRO EAST PUMPING STATION AND RESERVOIR

**CONTRACT A - PUMPING STATION
 HEATING AND VENTILATING
 PLANS ABOVE ELEVATIONS
 740.00 AND 750.00**

APPROVED: *J. W. MacLaren*
 JAMES F. MACLAREN ASSOCIATES
 ENGINEERS TORONTO

APPROVED: *B. B. Bennett*
 ENGINEER OF WATERWORKS
 METROPOLITAN CORPORATION OF GREATER WINNIPEG
 DIRECTOR & CHIEF ENGINEER

DATE: JUNE 22, 1962 SCALE: 1/8" = 1'-0" DWG. No. 25 OF 29

ME-32

