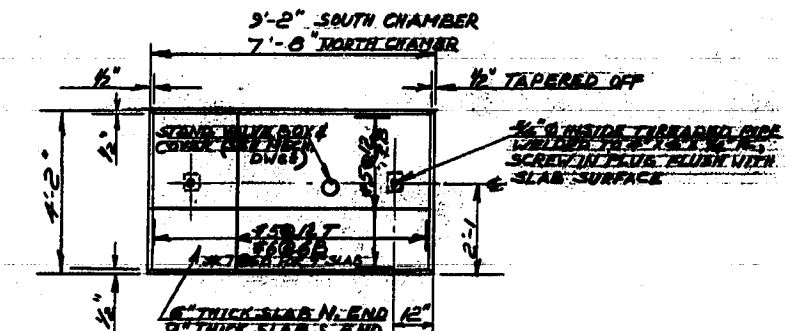


PLAN ABOVE ELEV. 750.00 OF NORTH END VALVE CHAMBER



PLAN OF REMOVABLE SLAB

PART PLAN ABOVE ELEV. 762.00

REVISED AS BUILT, JUNE - 1965

THE METROPOLITAN CORPORATION OF GREATER WINNIPEG
 WATERWORKS AND WASTE DISPOSAL DIVISION

METRO EAST PUMPING STATION AND RESERVOIR

**CONTRACT A - PUMPING STATION
 STRUCTURAL - PLAN ABOVE
 ELEVATION 762.00 SHEET I**

APPROVED: *J. W. MacLaren*
 JAMES F. MACLAREN ASSOCIATES
 ENGINEERS TORONTO

APPROVED: *J. W. MacLaren*
 JAMES F. MACLAREN ASSOCIATES
 ENGINEERS TORONTO

TEMPLETON ENGINEERING COMPANY
 PROFESSIONAL ENGINEER WINNIPEG

DATE: JUNE 22, 1962 SCALE: 1/4" = 1'-0" DWG. No. 6 OF 21

ME-13

