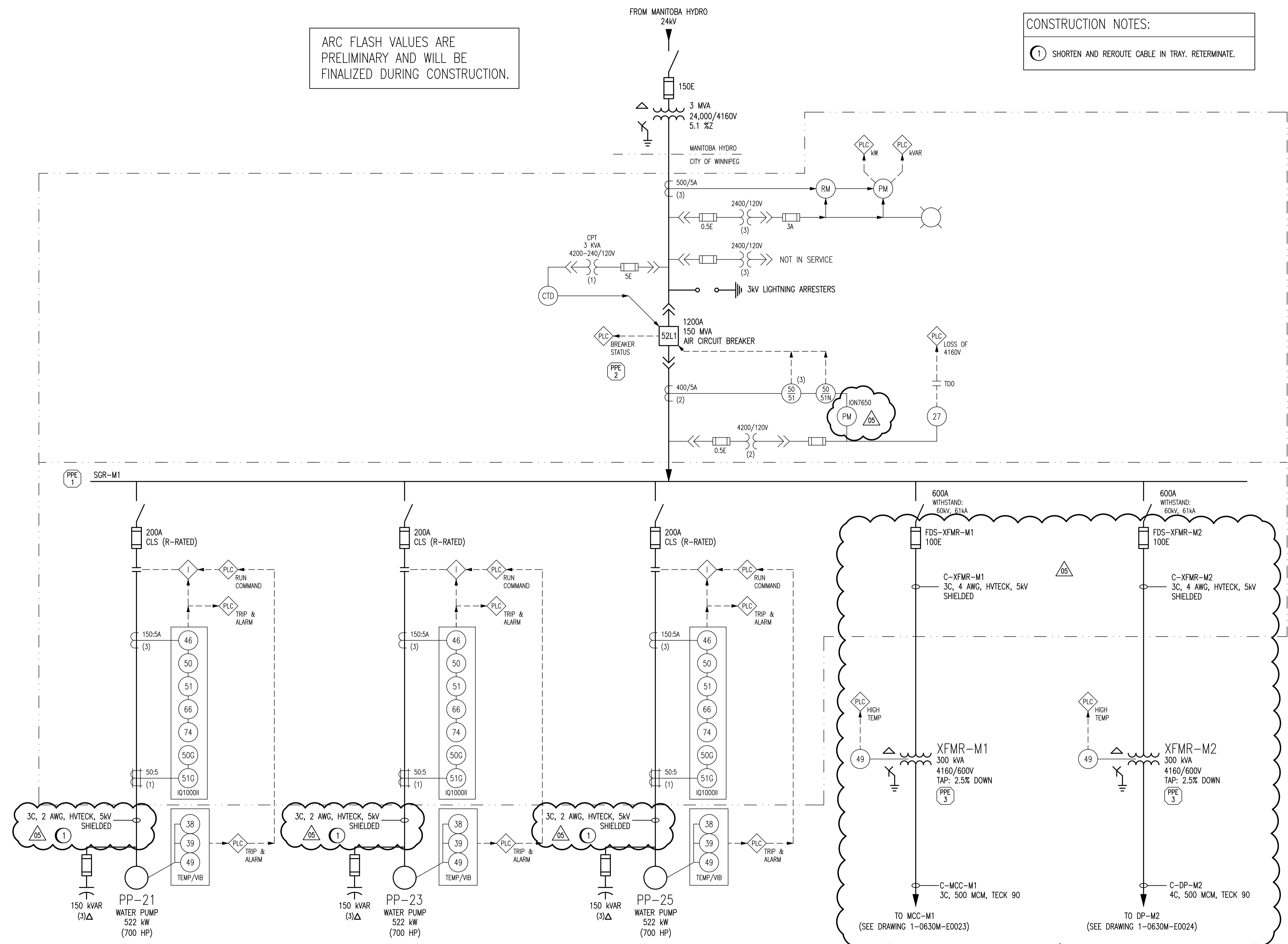


ARC FLASH VALUES ARE PRELIMINARY AND WILL BE FINALIZED DURING CONSTRUCTION.

CONSTRUCTION NOTES:
1 SHORTEN AND REROUTE CABLE IN TRAY. RETERMINATE.



- NOTES:**
- THIS DRAWING SUPERSEDES PART OF DRAWING Q-MCP-190.
 - 600V TRANSFORMERS ARE TO BE TAPPED DOWN 2.5% DUE TO EXISTING 575V HEATER LOADS AND 550V MOTOR LOADS.



NO.	REVISIONS	DATE	DESIGN	CHECK
05	ISSUED FOR TENDER, BID OPP. 490-2012	2012/07/23	BJC	CJR
04	AS-BUILT - REVISED DRAWING REFERENCES	2012/01/10	-	BJC
03	ISSUED FOR CITY USE	2011/05/30	BC	CJR
02	REMOVED 27 RELAY, ADDED 50/51-B	2009/05/27	BDK	CJR
01	REVISED DRAWING NUMBER	2008/02/13	AEO	CJR
00	ISSUED FOR CITY USE	2007/08/28	YM	CJR

SNC-LAVALIN INC.
148 Nature Park Way
Winnipeg, MB, Canada R3P 0X7
204-786-8080

DESIGNED BY: EXISTING
CHECKED BY: C. REIMER
DRAWN BY: DEB
APPROVED BY: C. REIMER
SCALE: NTS
RELEASED FOR CONSTRUCTION BY:
DATE: 2005/10/25
DATE:
CONSULTANT NO.: 508955-0000-47DD-0002

PRELIMINARY
NOT TO BE
USED FOR
CONSTRUCTION

THE CITY OF WINNIPEG
WATER AND WASTE DEPARTMENT

MACLEAN WATER PUMPING STATION

ELECTRICAL SINGLE LINE DIAGRAM
4160 V DISTRIBUTION

CITY DRAWING NUMBER: 1-0630M-E0002
SHEET: 001
REV: 05
SIZE: A1

1-0630M-E0014	MAIN BREAKER CONTROL SCHEMATIC
1-0630M-E0015	MAIN BREAKER THREE LINE DIAGRAM
1-0630M-E0001	ELECTRICAL SINGLE LINE DIAGRAM LEGEND & DETAILS
DRAWING NUMBER	REFERENCE DRAWINGS