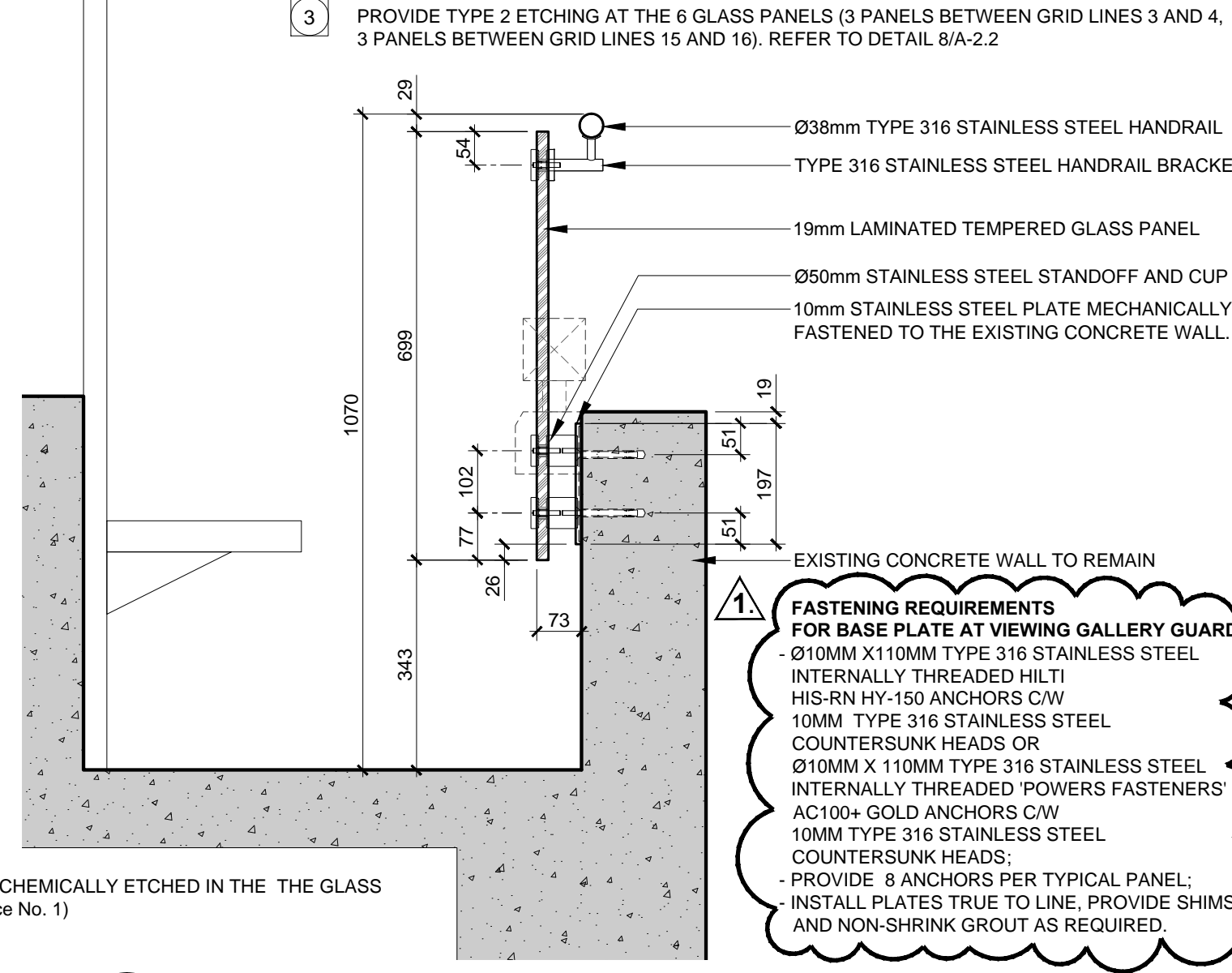
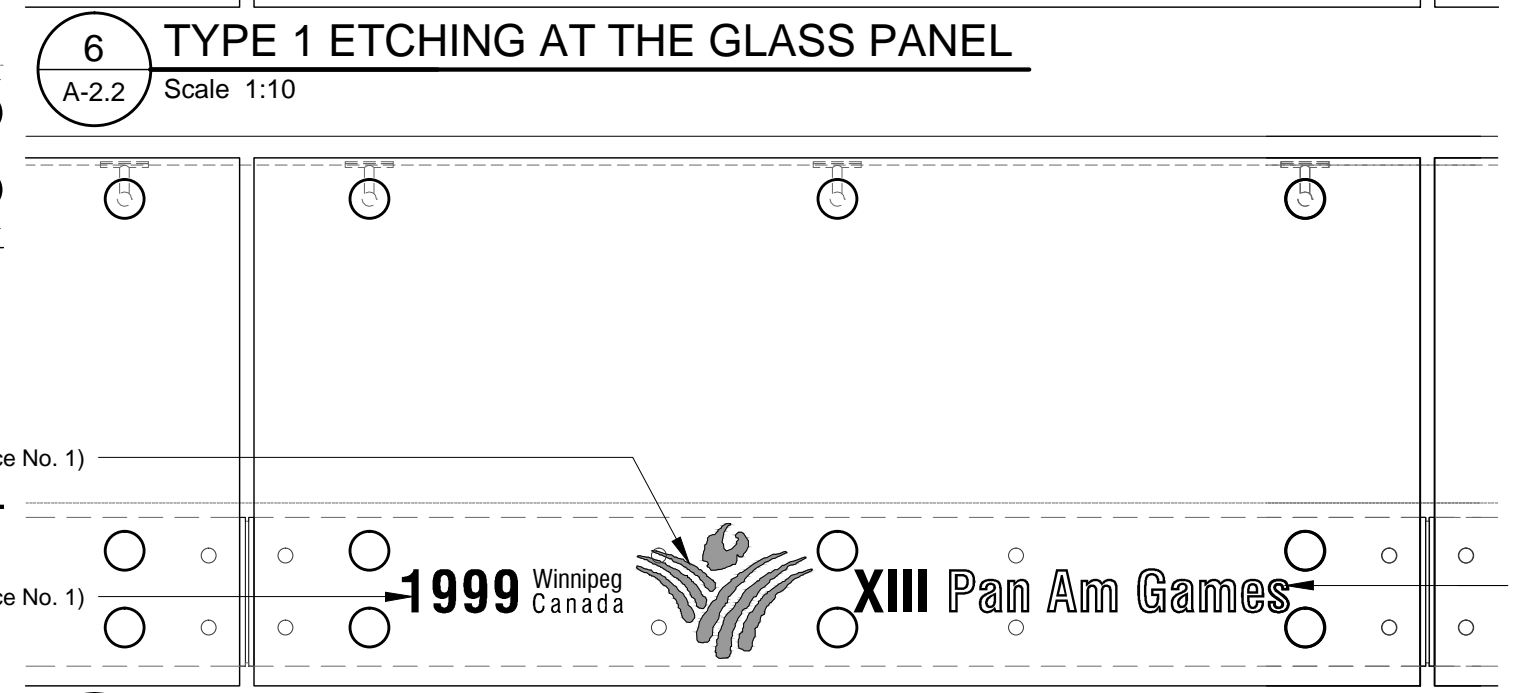
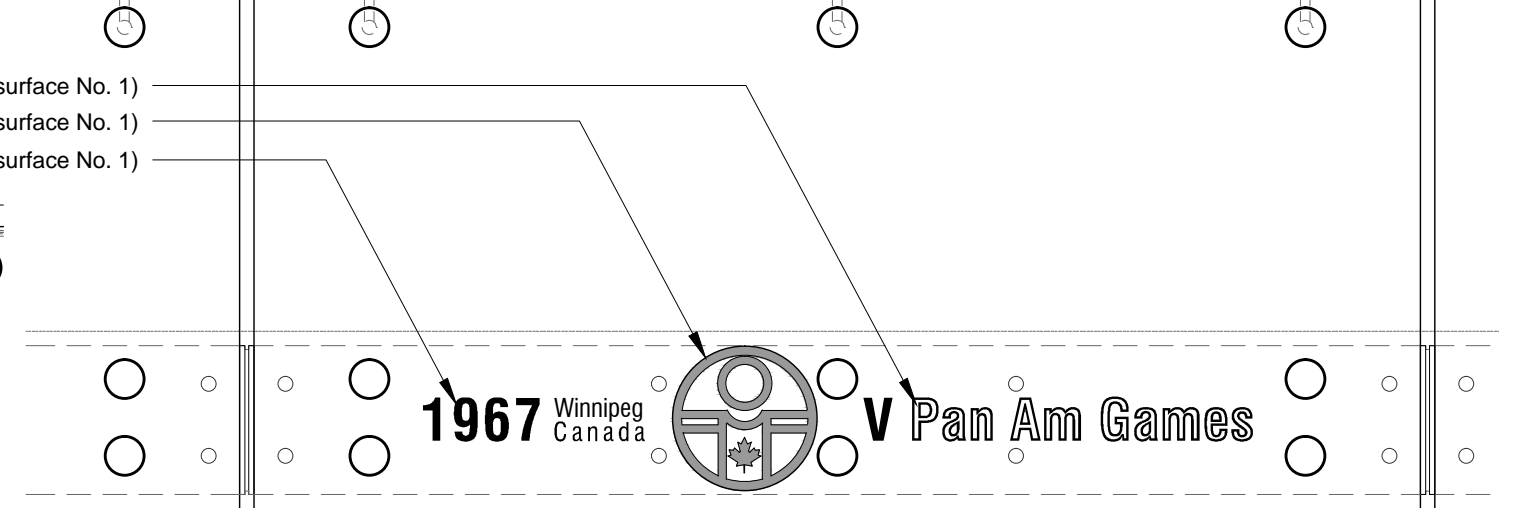
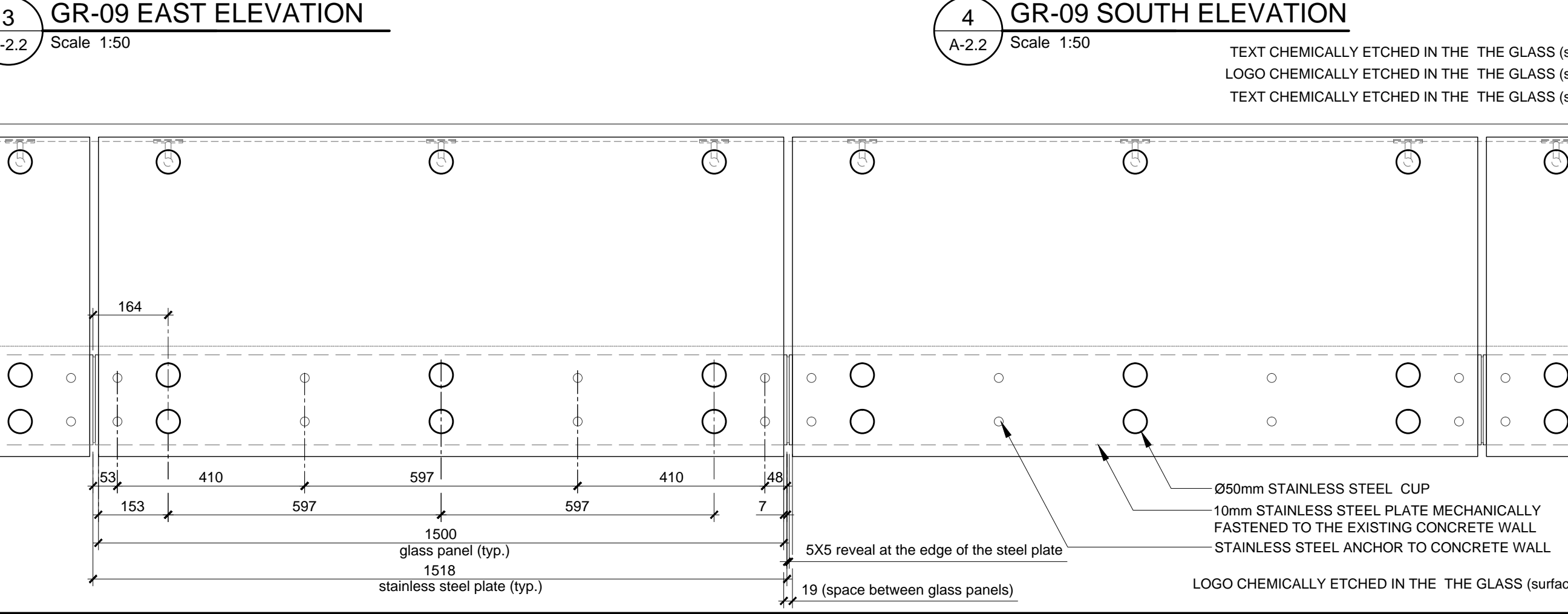
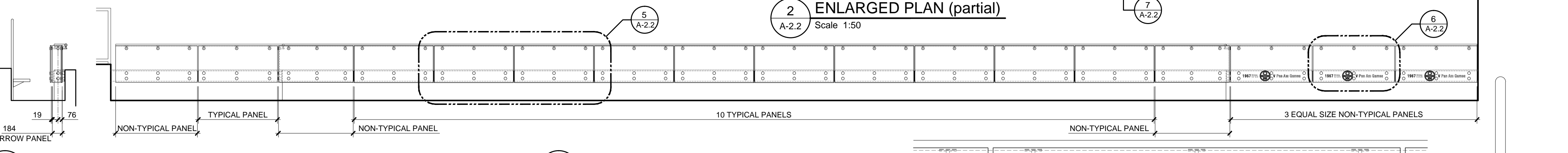
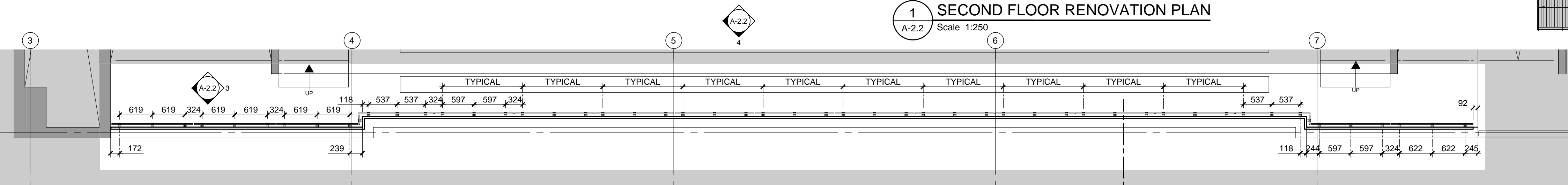
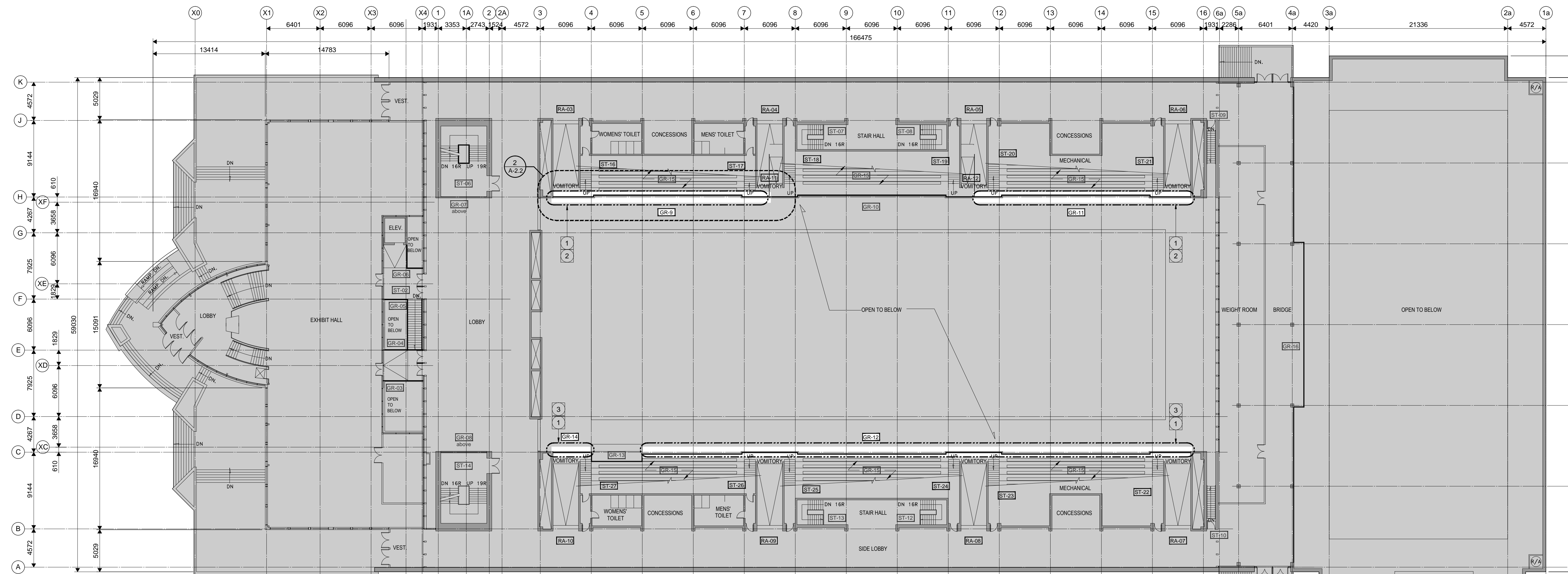
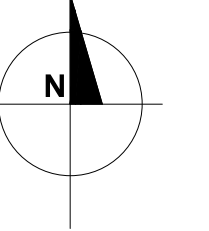


Ownership of Documents:
 Drawings and specifications as instruments of service are and shall remain the property of the Architect whether the project for which they are made is executed or not. They are not to be used by the owner on other projects or extensions to this project except by agreement in writing and with appropriate compensation to the Architect.

This drawing shall not be scaled. Follow given dimensions only.



- GENERAL NOTES:**
- DIMENSIONS ARE IN MILLIMETERS UNLESS NOTED OTHERWISE. DIMENSIONS ARE TO THE FINISHED WALL FACE, GRID LINES OR CENTERLINES.
 - DO NOT SCALE DRAWINGS. CONTRACTOR TO VERIFY EXISTING CONDITIONS. CONTRACTOR TO VERIFY LEVELS AND DIMENSIONS PROVIDED AND REQUIRED TO PERFORM THE WORK. DISCREPANCIES ARE TO BE REPORTED TO THE ARCHITECT IMMEDIATELY. OBTAIN CLARIFICATION PRIOR TO COMMENCING WORK.
- RENOVATION PLAN NOTES:**
- PROVIDE NEW GUARD AT THE EDGE OF VIEWING GALLERY. PRIOR TO INSTALLING THE STAINLESS STEEL PLATE AT THE FACE OF C.I.P. CONCRETE WALL PROVIDE CORROSION-INHIBITING COATING AT LOCATIONS WHERE REINFORCING STEEL IS EXPOSED.
 - PROVIDE TYPE 1 ETCHING AT THE 6 GLASS PANELS (3 PANELS BETWEEN GRID LINES 3 AND 4, 3 PANELS BETWEEN GRID LINES 15 AND 16). REFER TO DETAIL 6/A-2.2.
 - PROVIDE TYPE 2 ETCHING AT THE 6 GLASS PANELS (3 PANELS BETWEEN GRID LINES 3 AND 4, 3 PANELS BETWEEN GRID LINES 15 AND 16). REFER TO DETAIL 8/A-2.2.

FASTENING REQUIREMENTS FOR BASE PLATE AT VIEWING GALLERY GUARD:
 Ø10MM X 110MM TYPE 316 STAINLESS STEEL INTERNALLY THREADED HILTI HIS-RN HY-150 ANCHORS C/W 10MM TYPE 316 STAINLESS STEEL COUNTERSUNK HEADS OR Ø10MM X 110MM TYPE 316 STAINLESS STEEL INTERNALLY THREADED POWERS FASTENERS AC100+ GOLD ANCHORS C/W 10MM TYPE 316 STAINLESS STEEL COUNTERSUNK HEADS;
 PROVIDE 8 ANCHORS PER TYPICAL PANEL. INSTALL PLATES TRUE TO LINE. PROVIDE SHIMS AND NON-SHRINK GROUT AS REQUIRED.

ARCHITECT / PRIME CONSULTANT
SYNYSHYN
 ARCHITECTURE + INTERIOR DESIGN INC.
 MANITOBA • ALBERTA
 T: 204.947-1100
 F: 204.956-5742
 603-63 Albert Street Winnipeg, Manitoba R3B 1G4 Canada
 info@synyshyn.com
 www.synyshyn.com

ENGINEERING CONSULTANT
Crosier Kilgour & Partners Ltd.
 CONSULTING STRUCTURAL ENGINEERS
 300-275 Carlton Street Winnipeg, Manitoba R3C 5R6
 T 204 943 7501
 F 204 943 7507
 2011-1092

PROJECT TITLE
PAN-AM POOL GUARD AND HANDRAIL UPGRADES (phase I)
 25 Poseidon Bay, Winnipeg, Manitoba

ENGINEERING CONSULTANT
SECOND FLOOR RENOVATION PLAN, ENLARGED PLAN (partial), ELEVATIONS, DETAILS

DESIGNED BY JS DRAWN BY
 ISSUE DATE 06/29/12 REVISION No.
 PROJECT No. 12902 DRAWING No. A-2.2-R1