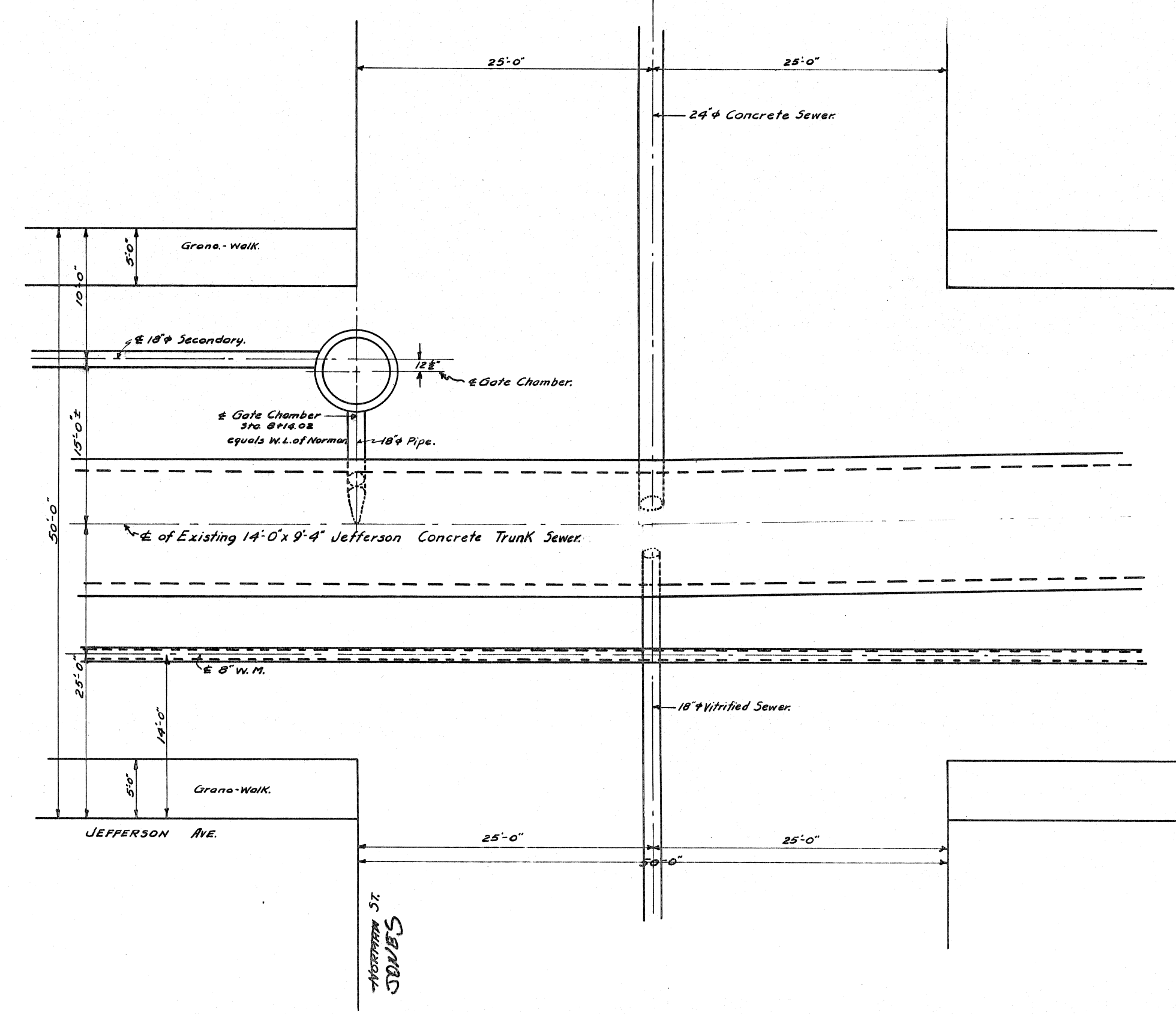
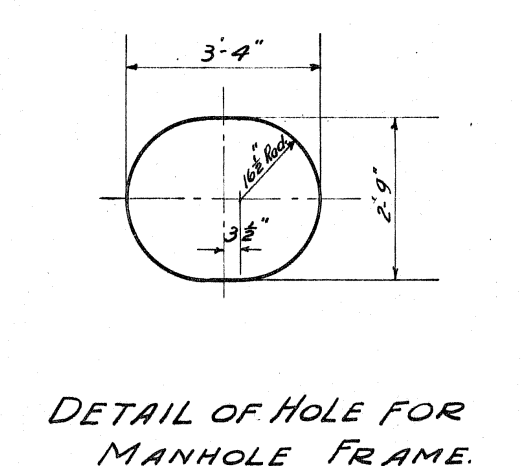
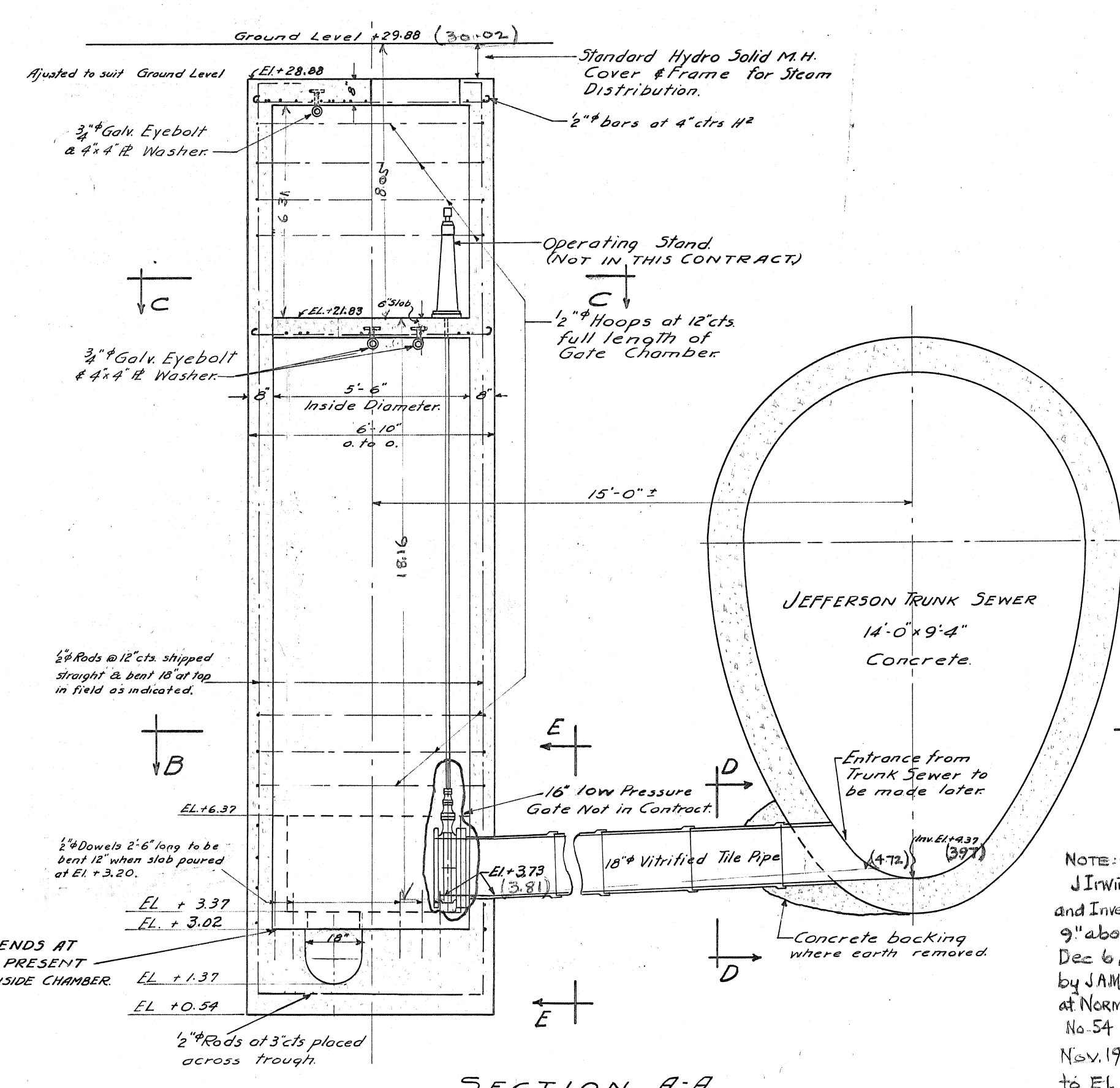
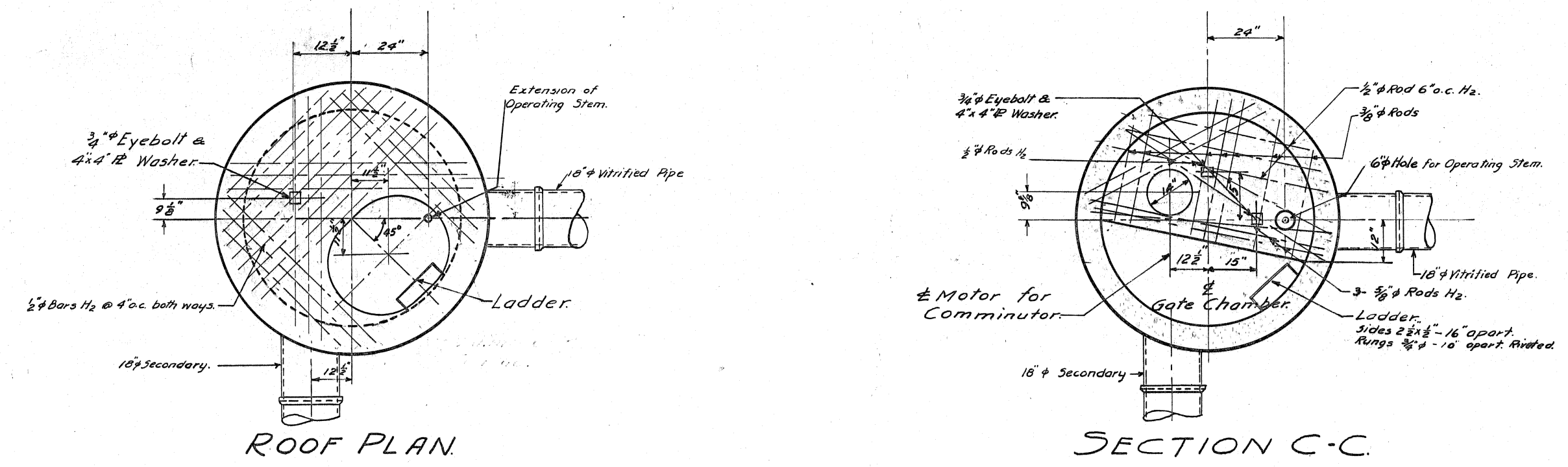
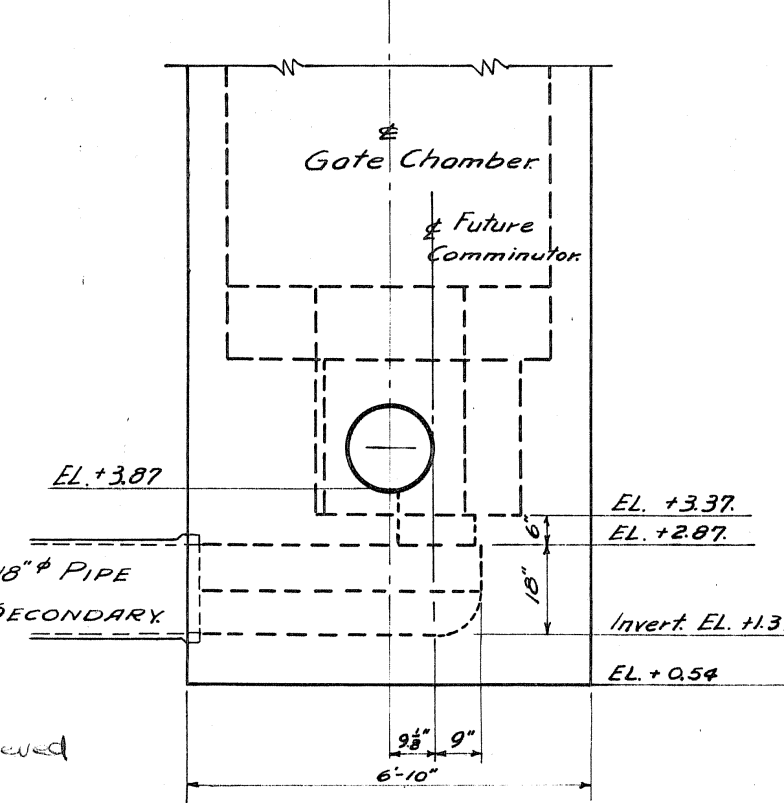


GC 10008

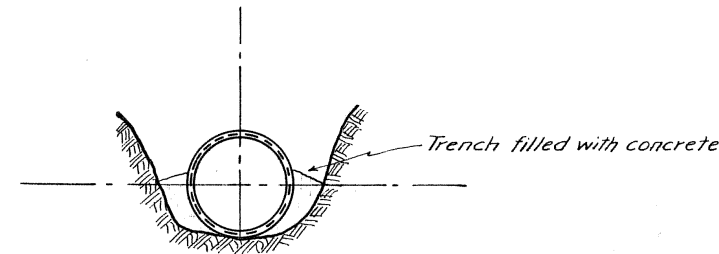
DETAILS



LOCATION PLAN Scale: 1/8" = 1'-0"



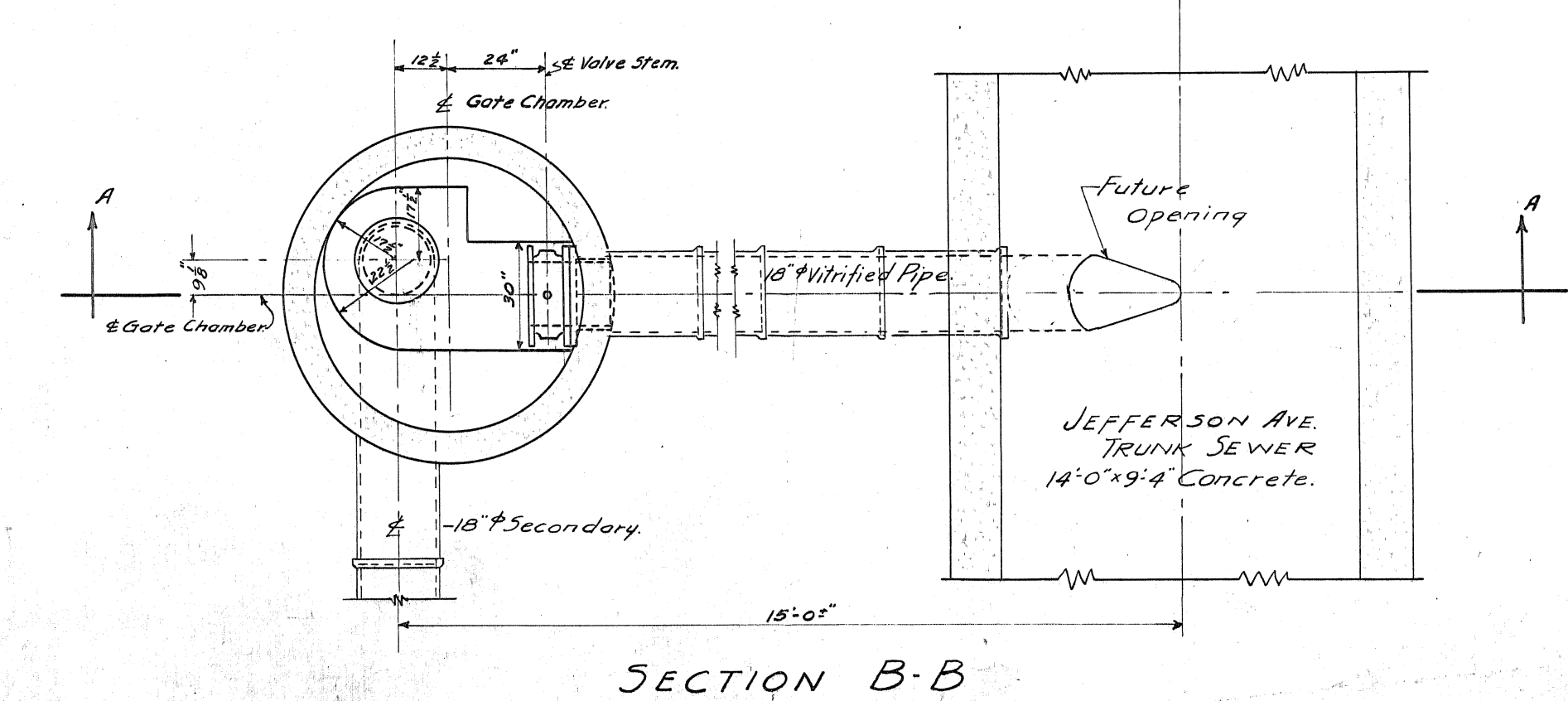
SECTION E-E



SECTION D-D

NOTE: - Dec 3/45  
 J Irwin checked Invert of Connection and Invert of Trunk and reports former 9" above latter;  
 Dec 6/45 Elev'n in ( ) taken by JAM using "O" of Open on hydrant at NORMAN ST as B.M. G.W.S.D. FIELD BK. No. 54 p 41.  
 Nov. 19, 1947 - 18" V.T. Pipe lowered to EL. 3.9 at Trunk.

CONTRACT ENDS AT EL. + 2.87 FOR PRESENT CONCRETE INSIDE CHAMBER.



SECTION B-B

NOT TO SCALE

Micro-Filmed 1965

**GREATER WINNIPEG SANITARY DISTRICT**

W. S. LEA Consulting Engineer

DESIGNED BY: [Signature]  
 CHECKED BY: [Signature]  
 DATE: [illegible]

TITLE: JEFFERSON AVE SECONDARY DETAILS OF GATE CHAMBER AND TRUNK JUNCTION STA. A

SCALE: 1/8" = 1'-0" except as noted

DATE: 1947

CHECKED BY: P.A.

APPROVED BY: [Signature]

APPROVED [Signature]

LOCATION APPROVED UNDERGROUND STRUCTURES

SUPR. U/G STRUCTURES COMMITTEE DATE

NOTE: LOCATION OF UNDERGROUND STRUCTURES AS SHOWN ARE BASED ON THE BEST INFORMATION AVAILABLE. BUT NO GUARANTEE IS GIVEN THAT ALL EXISTING UTILITIES ARE SHOWN OR THAT THE GIVEN LOCATIONS ARE EXACT. CONFIRMATION OF EXISTENCE AND EXACT LOCATION OF ALL SERVICES MUST BE OBTAINED FROM THE INDIVIDUAL UTILITIES BEFORE PROCEEDING WITH CONSTRUCTION.

NO.	REVISIONS	YYMMDD	BY

**AECOM**

DESIGNED BY: [illegible]  
 CHECKED BY: [illegible]  
 DRAWN BY: [illegible]  
 APPROVED BY: [illegible]

HOR. SCALE: [illegible]  
 VERT. SCALE: [illegible]

DATE: [illegible]

PROFESSIONAL'S SEAL

CONSULTANT DRAWING NO. 60219315-SHT-30-PR01 C-0021.dwg

**THE CITY OF WINNIPEG WATER AND WASTE DEPARTMENT**

JEFFERSON EAST COMBINED SEWER RELIEF CONTRACT 1 HISTORIC DRAWING (FOR INFORMATION PURPOSES ONLY)

SHEET OF [illegible]

CITY DRAWING NUMBER 144