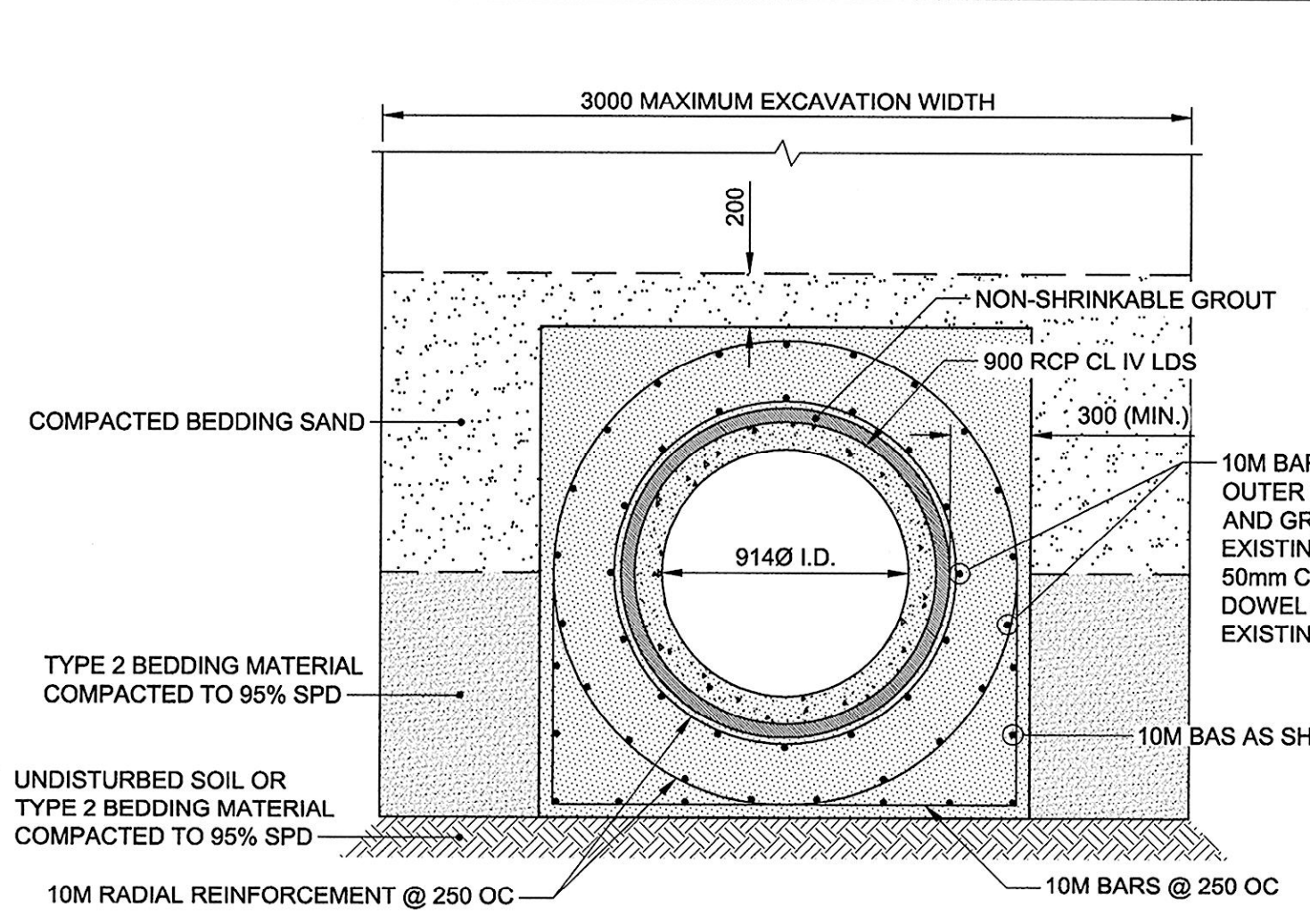


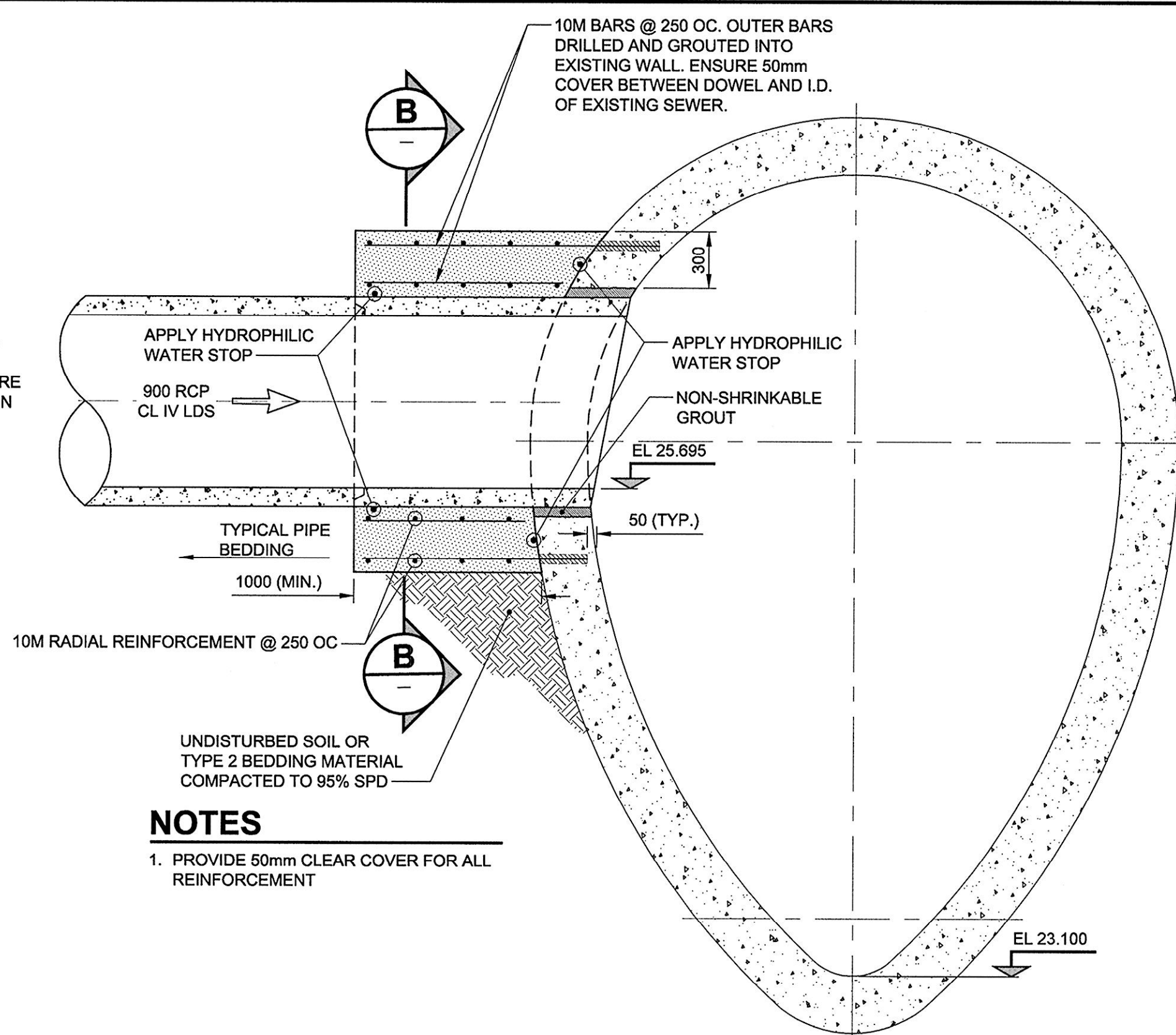
D SIZE 22" x 34" (559mm x 864mm)

PLOT: 6/5/2012 2:15:44 PM

AECOM FILE NAME: 60219315-SHT-30-PH01 C-0020.dwg Saved By: [unclear]

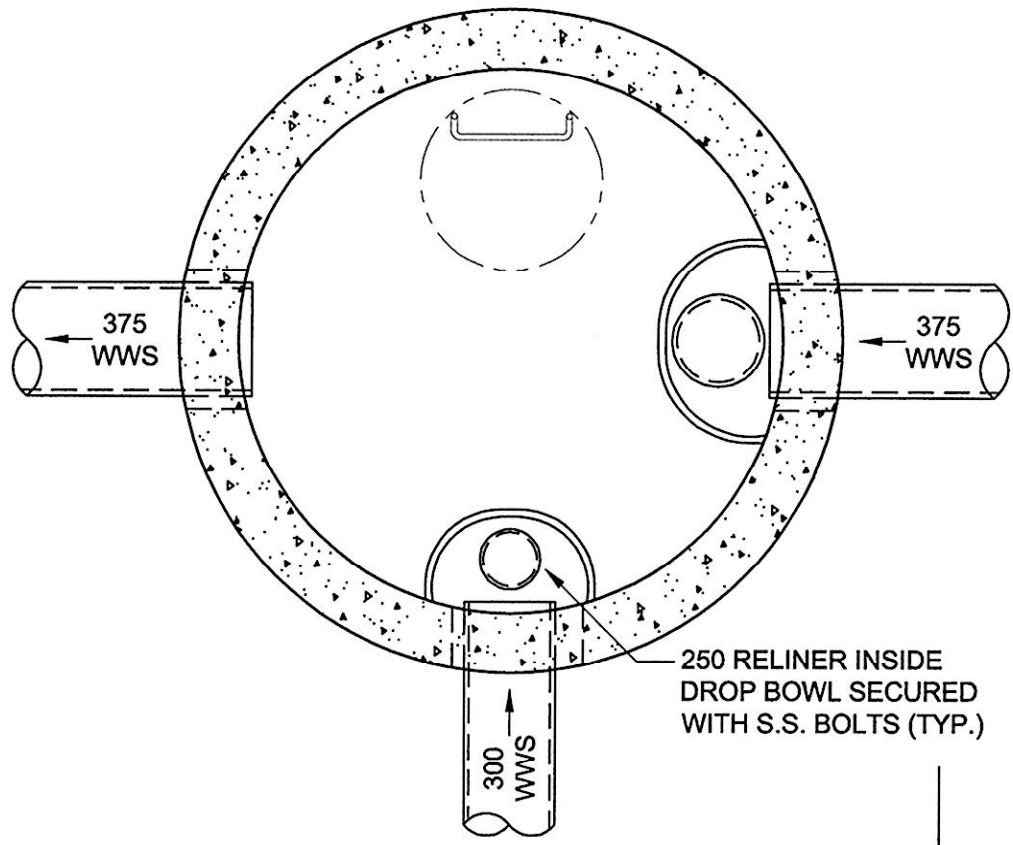


**SECTION B**  
SCALE 1:25  
0 0.25 0.5 0.75 m

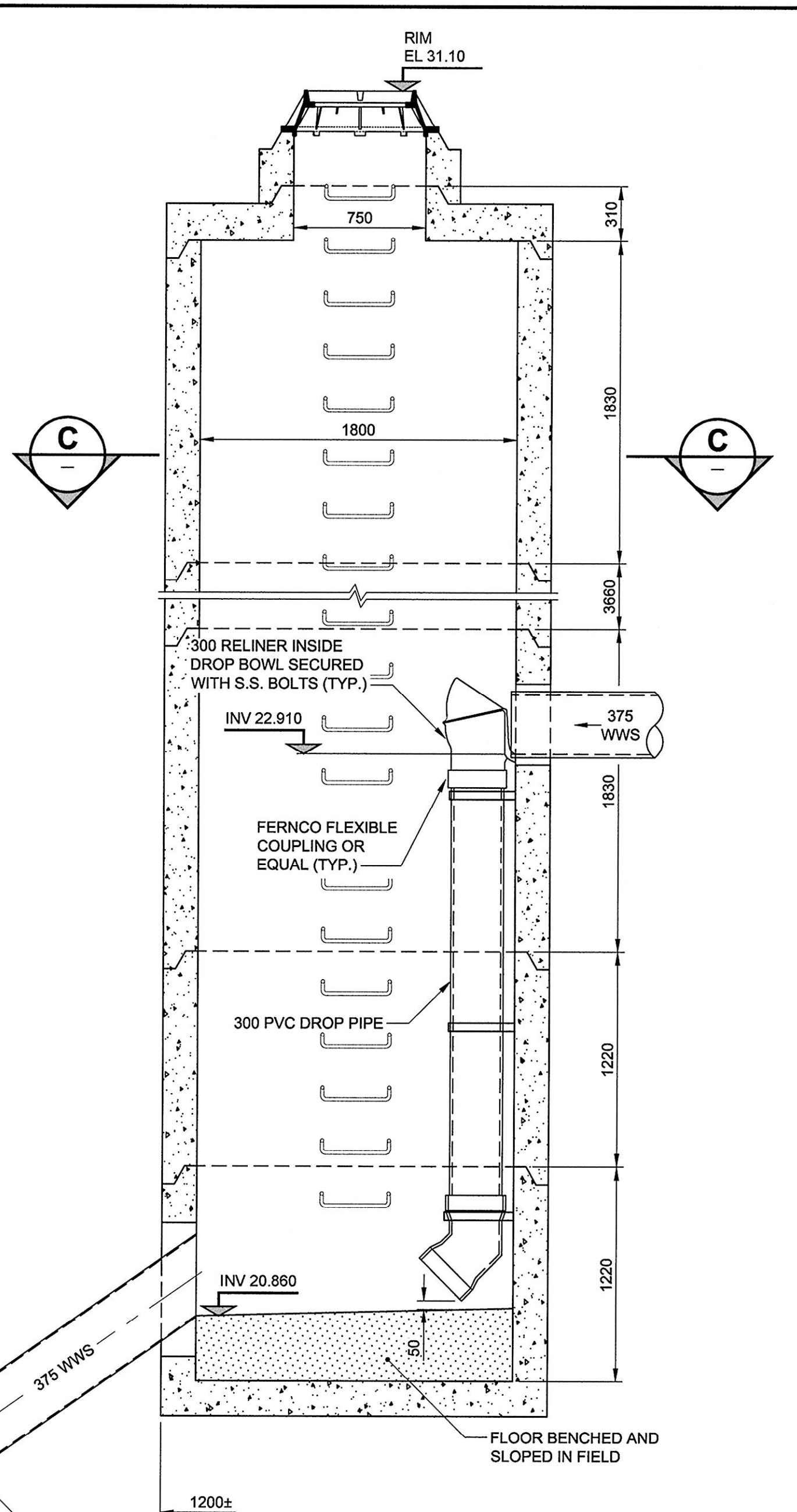


**DETAIL 2**  
SCALE 1:25  
0 0.25 0.5 0.75 m  
10153, 10169

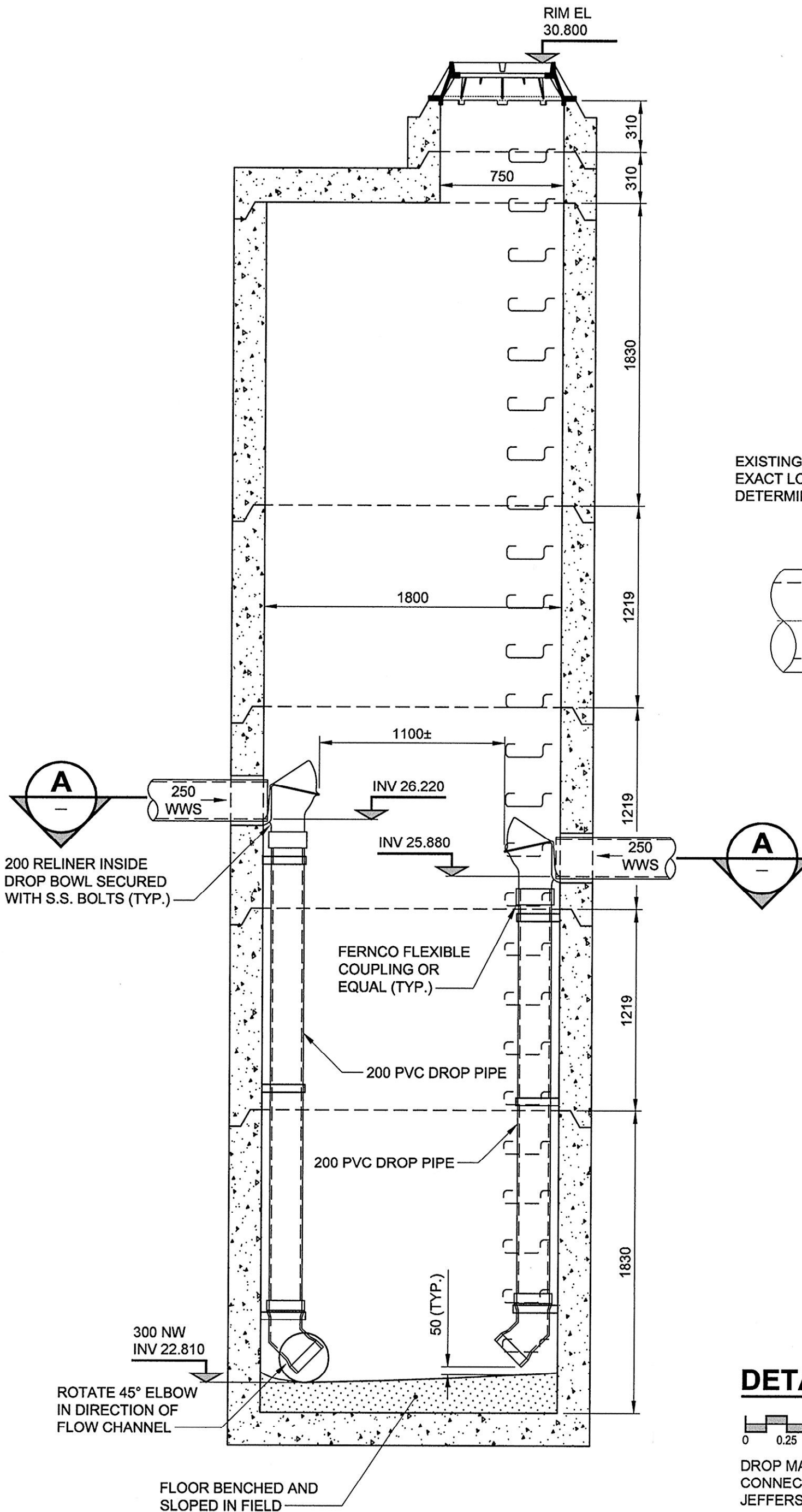
**NOTES**  
1. PROVIDE 50mm CLEAR COVER FOR ALL REINFORCEMENT



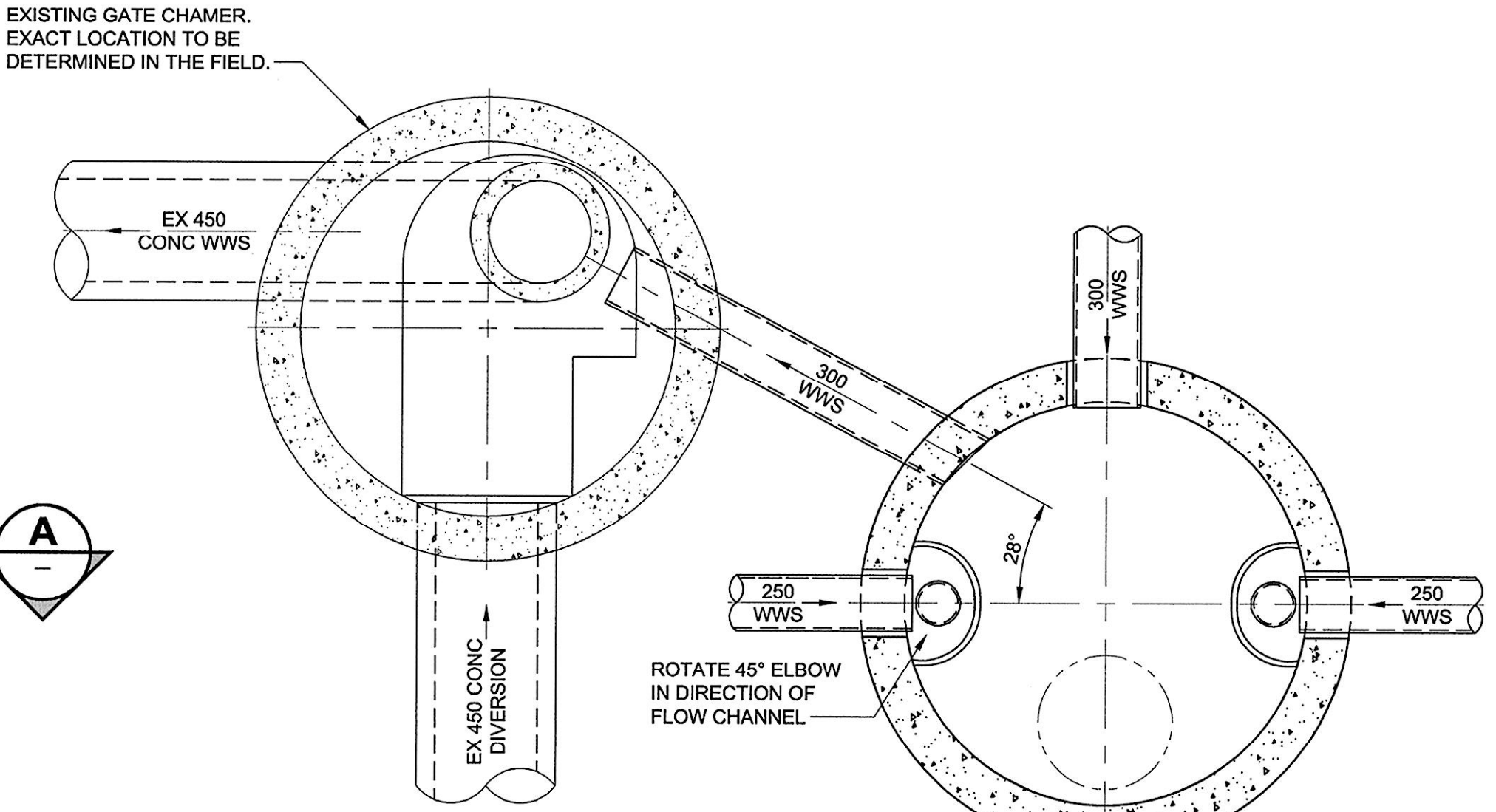
**SECTION C**  
SCALE 1:25  
0 0.25 0.5 0.75 m



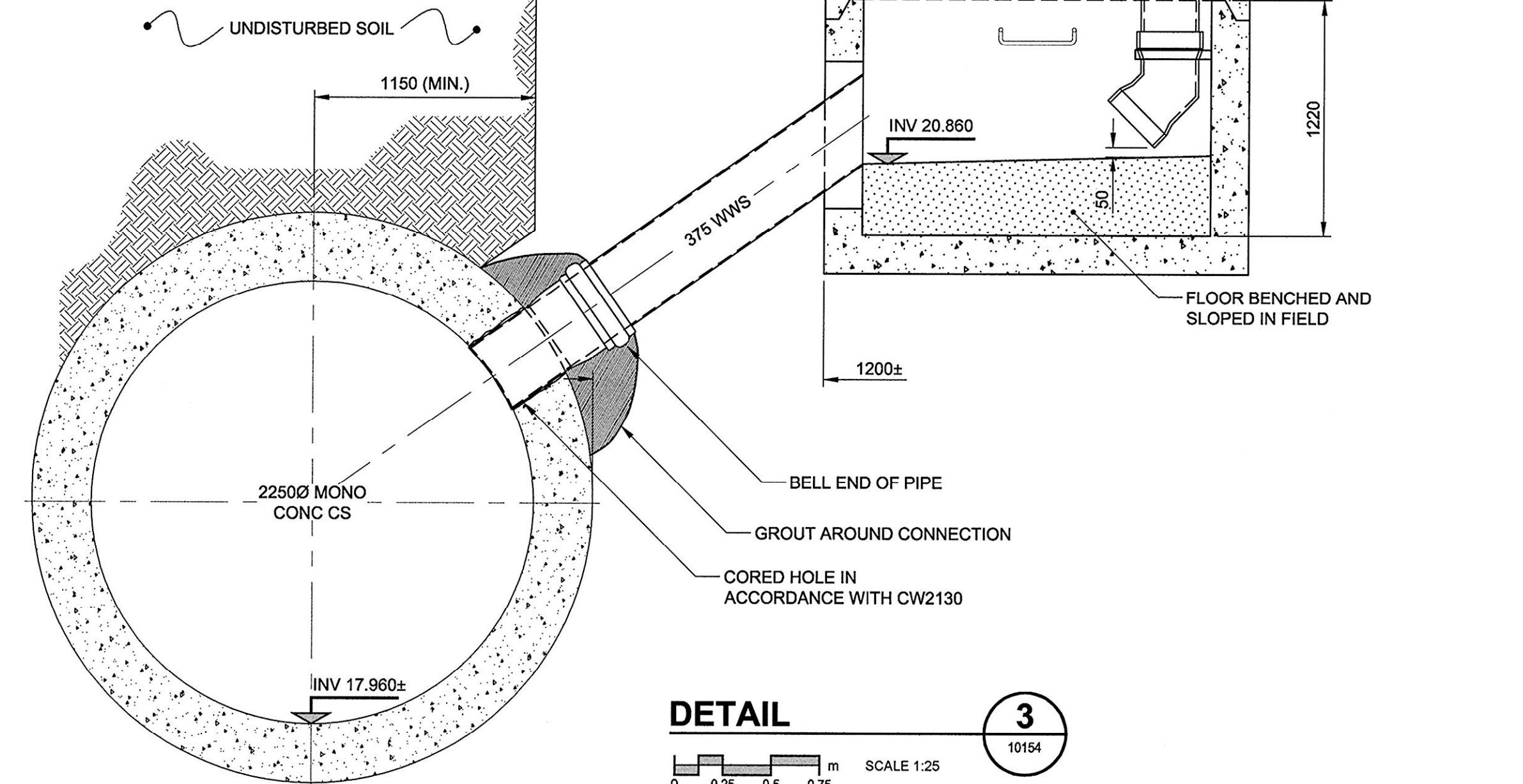
**DETAIL 3**  
SCALE 1:25  
0 0.25 0.5 0.75 m  
10154  
DROP MANHOLE (MH.WS) AND CONNECTION TO EXISTING SEWER AT SEVEN OAKS AVENUE AND MAIN STREET



**SECTION A**  
SCALE 1:25  
0 0.25 0.5 0.75 m



**SECTION A**  
SCALE 1:25  
0 0.25 0.5 0.75 m



**SECTION C**  
SCALE 1:25  
0 0.25 0.5 0.75 m

**DETAIL 1**  
SCALE 1:25  
0 0.25 0.5 0.75 m  
10153, 10169  
DROP MANHOLE (MH.WS) AND CONNECTION TO EXISTING GATE CHAMBER JEFFERSON AVENUE AND JONES STREET

**DETAIL 2**  
SCALE 1:25  
0 0.25 0.5 0.75 m  
10153, 10169  
900 LDS CONNECTION TO EXISTING 2850x4270 MONOLITHIC CONCRETE CS JEFFERSON AVENUE AND JONES STREET

**DETAIL 3**  
SCALE 1:25  
0 0.25 0.5 0.75 m  
10154  
DROP MANHOLE (MH.WS) AND CONNECTION TO EXISTING SEWER AT SEVEN OAKS AVENUE AND MAIN STREET

LOCATION APPROVED UNDERGROUND STRUCTURES		NO.	REVISIONS	DATE	BY
0	ISSUED FOR CONSTRUCTION			12/08/06	ADL

<b>AECOM</b> WHOLE NUMBERS INDICATE MILLIMETRES DECIMALIZED NUMBERS INDICATE METRES		DESIGNED BY: JBB CHECKED BY: [Signature] DRAWN BY: ADL APPROVED BY: [Signature] HOR. SCALE: AS NOTED VERT. SCALE: N/A DATE: Jun 5, 2012	PROFESSIONAL'S SEAL PROVINCE OF MANITOBA GUY D. J. TOUPIN Member 23484 REGISTERED PROFESSIONAL ENGINEER CONSULTANT DRAWING NO. 60219315-SHT-30-PH01 C-0020.dwg
---	--	---	---

**THE CITY OF WINNIPEG WATER AND WASTE DEPARTMENT**

**JEFFERSON EAST COMBINED SEWER RELIEF CONTRACT 1**

**DETAILS AND SECTIONS**

SHEET 20 OF 20  
CITY DRAWING NUMBER 10170  
REV 0

BID OPPORTUNITY NO. 430-2012