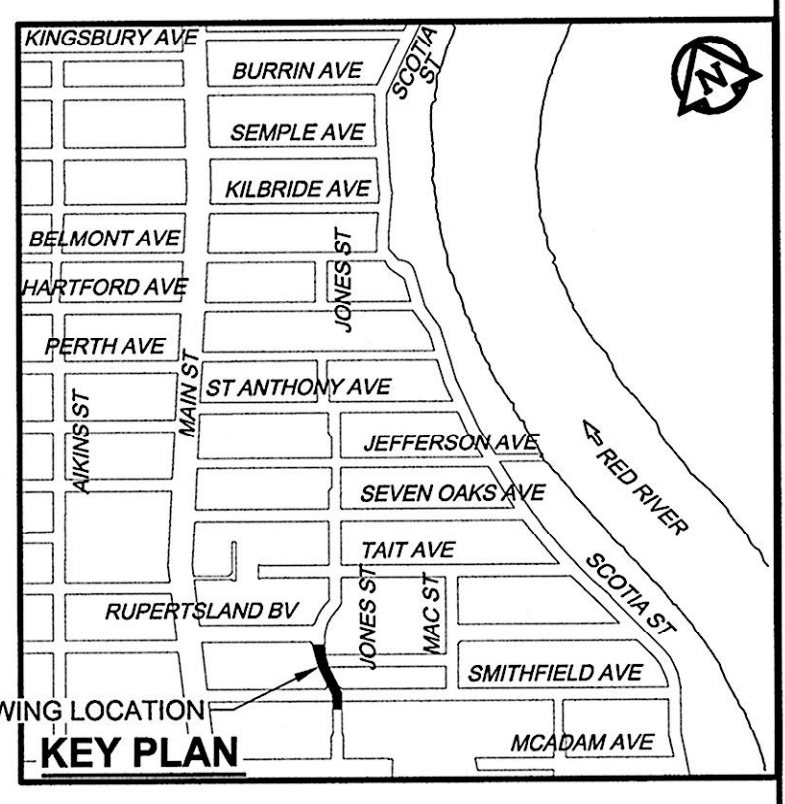
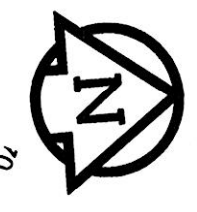
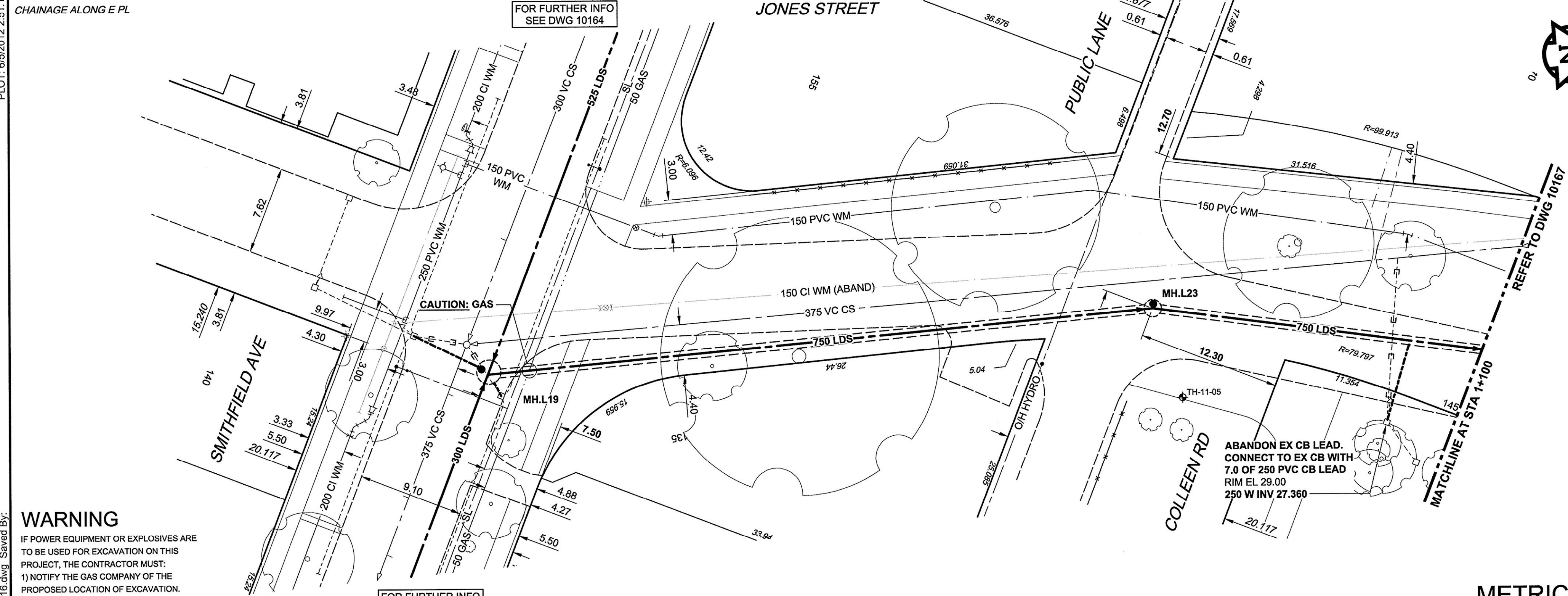
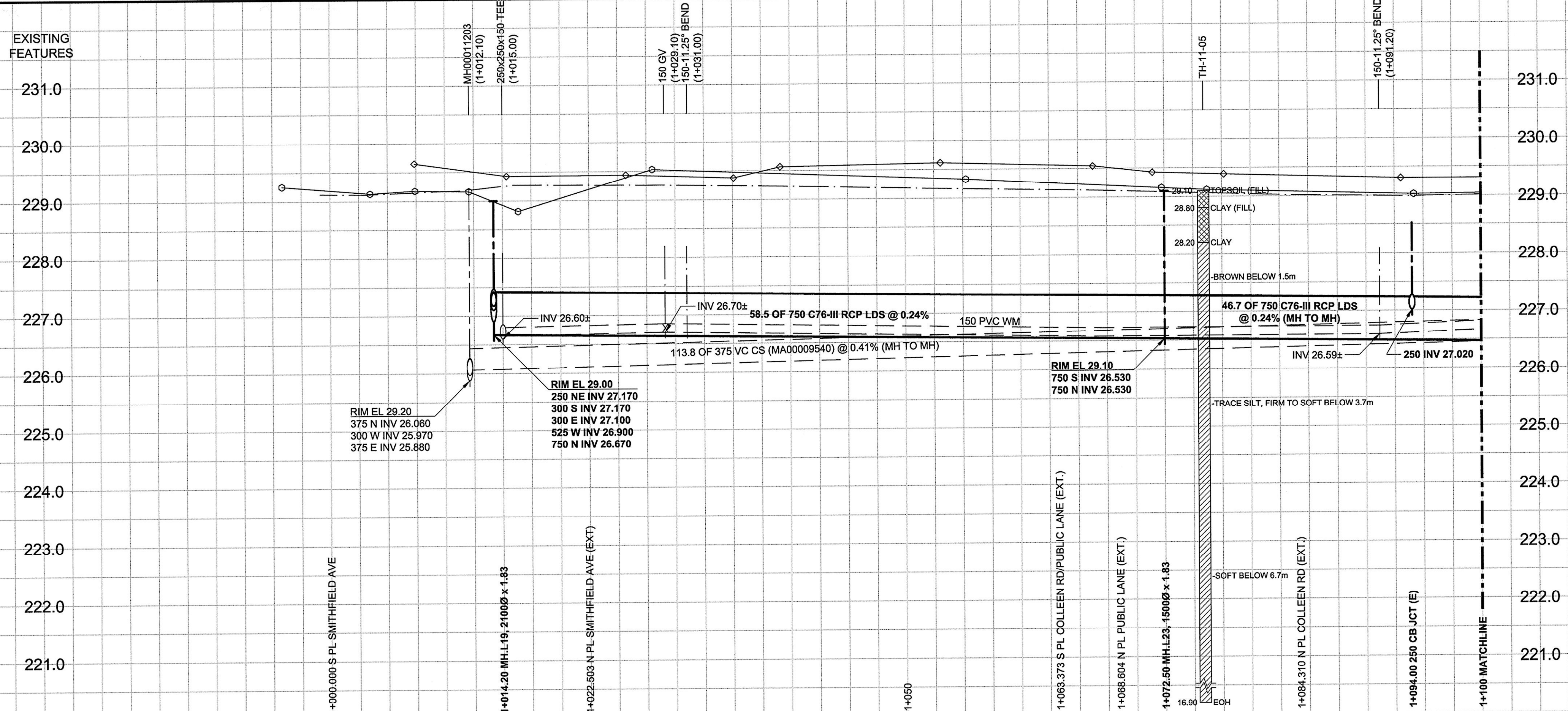


D SIZE 22" x 34" (564mm x 864mm)

PLOT: 6/5/2012 2:51:18 PM

AECOM REVIEW DRFT CHK
AECOM FILE NAME: 60219315-SHT-30-Ph01 C-0016.dwg Saved By: [Signature]



- CONSTRUCTION NOTES:**
- FOR DETAILED TEST HOLE INFORMATION, SEE SPECIFICATION.
 - CONFIRM LOCATION OF ALL WATER & WASTEWATER SERVICES IN THE FIELD.
 - INSTALL NEW SEWERS, CATCHBASIN LEADS AND WATERMANS BY TRENCHLESS METHODS.
 - LOCATION OF SERVICES SHOWN ON DRAWINGS ARE APPROXIMATE.
 - ALL SHAFTS SHALL HAVE CLASS 3 BACKFILL EXCEPTING THOSE ON MAIN STREET WHICH SHALL HAVE CLASS 1 BACKFILL.

WARNING
IF POWER EQUIPMENT OR EXPLOSIVES ARE TO BE USED FOR EXCAVATION ON THIS PROJECT, THE CONTRACTOR MUST:
1) NOTIFY THE GAS COMPANY OF THE PROPOSED LOCATION OF EXCAVATION.
2) TAKE PRECAUTION TO AVOID DAMAGE TO GAS COMPANY INSTALLATIONS. SEE PROVINCIAL REGULATION 140/92 FOR DETAILS.

APEGM
Certificate of Authorization
AECOM Canada Ltd.
No. 4671 Date: *June 5, 2012*

METRIC
WHOLE NUMBERS INDICATE MILLIMETRES
DECIMALIZED NUMBERS INDICATE METRES

BID OPPORTUNITY NO. 430-2012

150 WM	WATERMAIN	150 WM	○	CURB STOP	150 WM	WATERMAIN	150 WM
○	HYDRANT	○	○	REDUCER	○	HYDRANT	○
○	VALVE	○	○	COUPLING	○	VALVE	○
300 LDS	LAND DRAINAGE SEWER	300 LDS	○	ANODE	300 LDS	LAND DRAINAGE SEWER	300 LDS
250 WWS	WASTE WATER SEWER	250 WWS	○	HYDRO	250 WWS	WASTE WATER SEWER	250 WWS
○	MANHOLE	○	○	MTS	○	PAVEMENT CROWN	○
○	CATCH BASIN	○	○	GAS	○	N/W PROPERTY LINE	○
○	CURB INLET	○	○	TESTHOLE	○	S/E PROPERTY LINE	○
○	CULVERT	○	○	LAMP STANDARD	○	N/W GUTTER	○
○	PIPE ABANDONMENTS	○	○	TREE	○	S/E GUTTER	○
○	SURVEY BAR	○	○		○		○
○	EXISTING	○	○	LEGEND - PLAN	○	LEGEND - PROFILE	○

LOCATION APPROVED
UNDERGROUND STRUCTURES
SUPR. U/G STRUCTURES DATE COMMITTEE

NOTE:
LOCATION OF UNDERGROUND STRUCTURES AS SHOWN ARE BASED ON THE BEST INFORMATION AVAILABLE. BUT NO GUARANTEE IS GIVEN THAT ALL EXISTING UTILITIES ARE SHOWN OR THAT THE GIVEN LOCATIONS ARE EXACT. CONFIRMATION OF EXISTENCE AND EXACT LOCATION OF ALL SERVICES MUST BE OBTAINED FROM THE INDIVIDUAL UTILITIES BEFORE PROCEEDING WITH CONSTRUCTION.

BM 13-009	N.E. Cor. Jefferson Ave. & Main St., Tblt. in S. Conc. foundation of Lift Station, 0.5m W. & 0.1m below brick of S.E. Cor. of Bldg.	12/06/06	ADL
ELEV 230.692m		YYMMDD	BY
0	ISSUED FOR CONSTRUCTION		
NO.	REVISIONS		

AECOM	DESIGNED BY: JEB	CHECKED BY: [Signature]
	DRAWN BY: ADL	APPROVED BY: [Signature]
	HOR. SCALE: 1:250	RELEASED FOR CONSTRUCTION: [Signature]
	VERT. SCALE: 1:50	DATE: <i>June 5, 2012</i>

PROFESSIONAL'S SEAL
PROVINCE OF MANITOBA
E.D. J. TOUPIN
Member
23484
REGISTERED PROFESSIONAL ENGINEER
CONSULTANT DRAWING NO.
60219315-SHT-30-Ph01 C-0016.dwg

THE CITY OF WINNIPEG
WATER AND WASTE DEPARTMENT

JEFFERSON EAST
COMBINED SEWER RELIEF
CONTRACT 1
JONES STREET
SMITHFIELD AVENUE TO
5m SOUTH OF RUPERSTLAND AVENUE

SHEET 16 OF 20
CITY DRAWING NUMBER
10166
REV 0