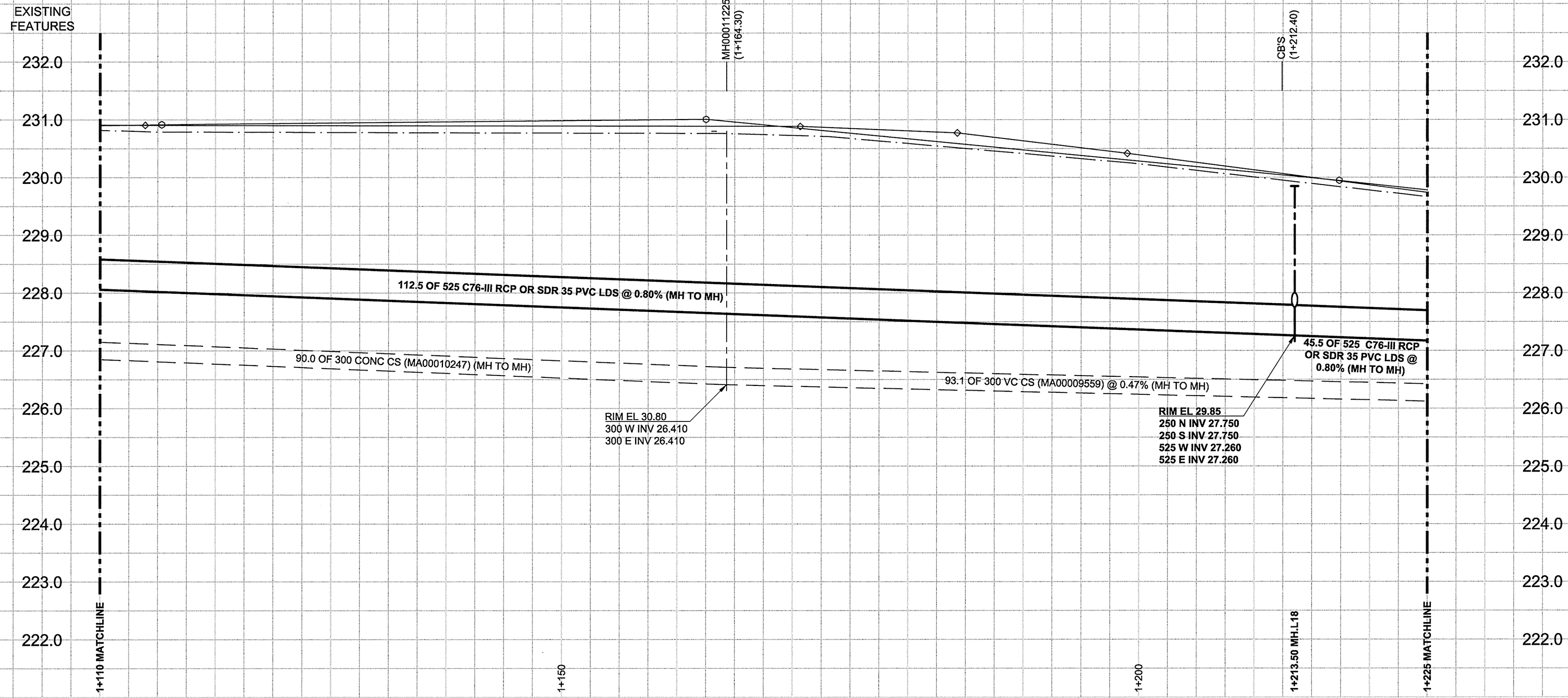


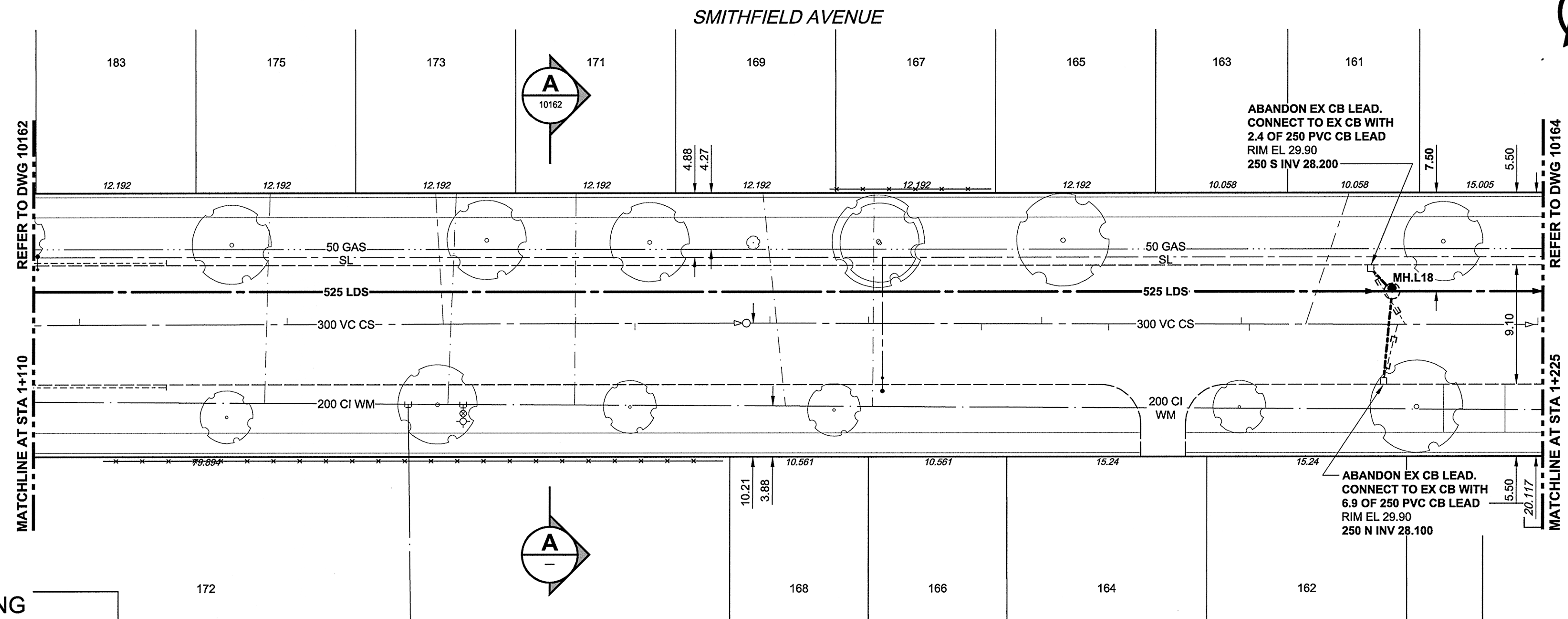
D SIZE 22" x 34" (559mm x 864mm)

PLOT: 6/5/2012 2:45:58 PM

AECOM REVIEW DRFT CHK  
AECOM FILE NAME: 60219315-SHT-30-Ph01 C-0013.dwg Saved By: BIP/BJ

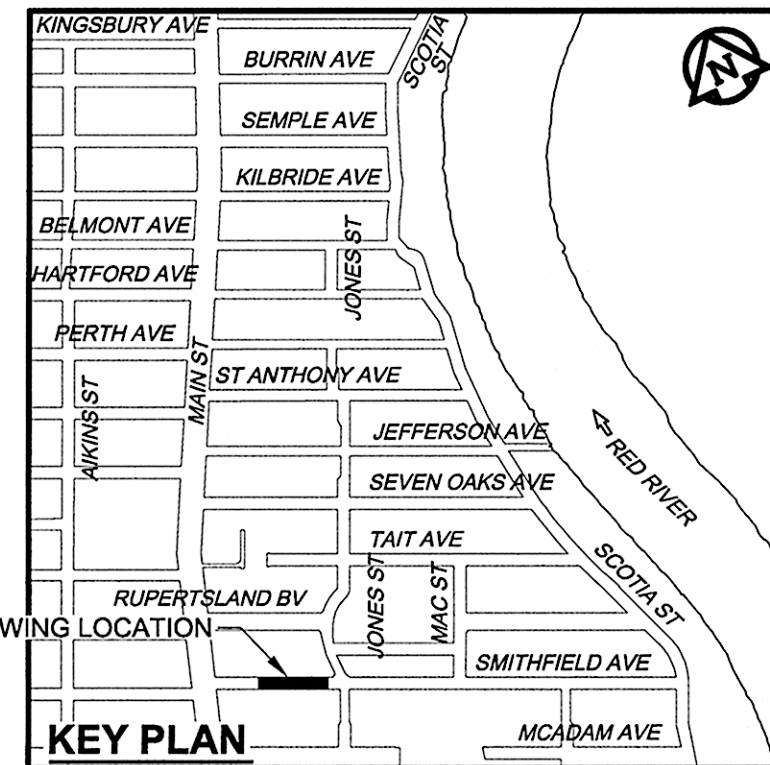


CHAINAGE ALONG S PL



**WARNING**  
 IF POWER EQUIPMENT OR EXPLOSIVES ARE TO BE USED FOR EXCAVATION ON THIS PROJECT, THE CONTRACTOR MUST:  
 1) NOTIFY THE GAS COMPANY OF THE PROPOSED LOCATION OF EXCAVATION.  
 2) TAKE PRECAUTION TO AVOID DAMAGE TO GAS COMPANY INSTALLATIONS.  
 SEE PROVINCIAL REGULATION 140/92 FOR DETAILS

- CONSTRUCTION NOTES:**
- FOR DETAILED TEST HOLE INFORMATION, SEE SPECIFICATION.
  - CONFIRM LOCATION OF ALL WATER & WASTEWATER SERVICES IN THE FIELD.
  - INSTALL NEW SEWERS, CATCHBASIN LEADS AND WATERMAINS BY TRENCHLESS METHODS.
  - LOCATION OF SERVICES SHOWN ON DRAWINGS ARE APPROXIMATE.
  - ALL SHAFTS SHALL HAVE CLASS 3 BACKFILL EXCEPTING THOSE ON MAIN STREET WHICH SHALL HAVE CLASS 1 BACKFILL.



**APEGM**  
 Certificate of Authorization  
 AECOM Canada Ltd.  
 No. 4671 Date: June 5, 2012

**METRIC**  
 WHOLE NUMBERS INDICATE MILLIMETRES  
 DECIMALIZED NUMBERS INDICATE METRES

BID OPPORTUNITY NO. 430-2012

150 WM	WATERMAIN	150 WM	150 WM	CURB STOP	150 WM	WATERMAIN	150 WM
HYDRANT	HYDRANT	REDUCER	REDUCER	REDUCER	HYDRANT	HYDRANT	HYDRANT
VALVE	VALVE	COUPLING	COUPLING	COUPLING	VALVE	VALVE	VALVE
300 LDS	LAND DRAINAGE SEWER	300 LDS	300 LDS	300 LDS	300 LDS	LAND DRAINAGE SEWER	300 LDS
250 WWS	WASTE WATER SEWER	250 WWS	250 WWS	250 WWS	250 WWS	WASTE WATER SEWER	250 WWS
MANHOLE	MANHOLE	MTS	MTS	MTS	MANHOLE	MANHOLE	MANHOLE
CATCH BASIN	CATCH BASIN	GAS	GAS	GAS	CATCH BASIN	CATCH BASIN	CATCH BASIN
CURB INLET	CURB INLET	TESTHOLE	TESTHOLE	TESTHOLE	CURB INLET	CURB INLET	CURB INLET
CULVERT	CULVERT	LAMP STANDARD	LAMP STANDARD	LAMP STANDARD	CULVERT	CULVERT	CULVERT
PIPE ABANDONMENTS	PIPE ABANDONMENTS	TREE	TREE	TREE	PIPE ABANDONMENTS	PIPE ABANDONMENTS	PIPE ABANDONMENTS
SURVEY BAR	SURVEY BAR				SURVEY BAR	SURVEY BAR	SURVEY BAR
EXISTING	LEGEND - PLAN	NEW	EXISTING	LEGEND - PLAN	NEW	EXISTING	LEGEND - PROFILE

**LOCATION APPROVED**  
 UNDERGROUND STRUCTURES  
 SUPR. U/G STRUCTURES DATE COMMITTEE  
 NOTE:  
 LOCATION OF UNDERGROUND STRUCTURES AS SHOWN ARE BASED ON THE BEST INFORMATION AVAILABLE. BUT NO GUARANTEE IS GIVEN THAT ALL EXISTING UTILITIES ARE SHOWN OR THAT THE GIVEN LOCATIONS ARE EXACT. CONFIRMATION OF EXISTENCE AND EXACT LOCATION OF ALL SERVICES MUST BE OBTAINED FROM THE INDIVIDUAL UTILITIES BEFORE PROCEEDING WITH CONSTRUCTION.

NO.	REVISIONS	DATE	BY
0	ISSUED FOR CONSTRUCTION	12/06/08	ADL
		YYMMDD	

DESIGNED BY	JEB	CHECKED BY	[Signature]
DRAWN BY	ADL	APPROVED BY	[Signature]
HOR. SCALE	1:250	RELEASED FOR CONSTRUCTION	[Signature]
VERT. SCALE	1:50	DATE	June 5, 2012

PROFESSIONAL'S SEAL  
 E.D.J. TOUPIN  
 Member  
 23484  
 REGISTERED PROFESSIONAL ENGINEER  
 CONSULTANT DRAWING NO.  
 60219315-SHT-30-Ph01 C-0013.dwg

**THE CITY OF WINNIPEG WATER AND WASTE DEPARTMENT**

**JEFFERSON EAST COMBINED SEWER RELIEF CONTRACT 1**

SMITHFIELD AVENUE  
 70m EAST OF MAIN STREET TO  
 20m WEST OF JONES STREET

SHEET 13 OF 20  
 CITY DRAWING NUMBER  
**10163**