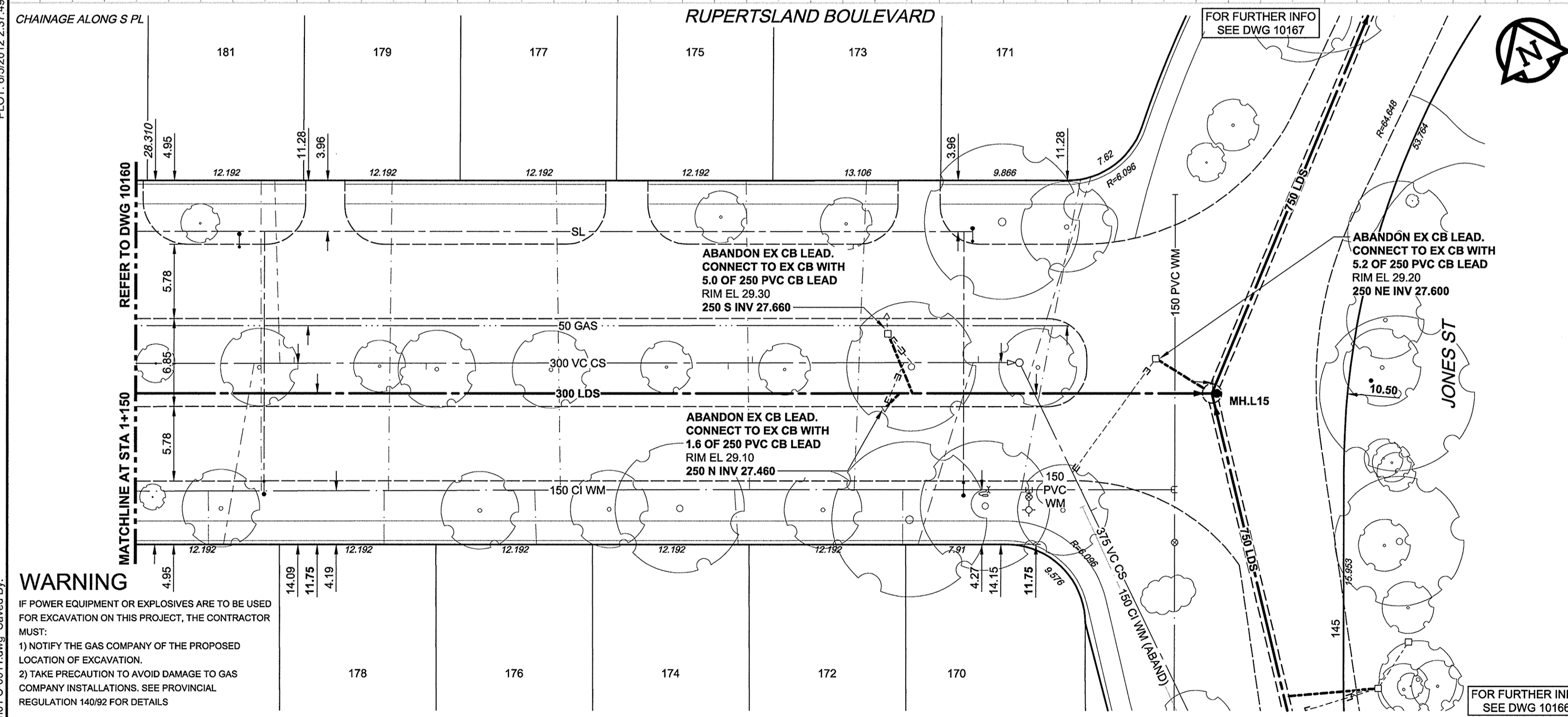
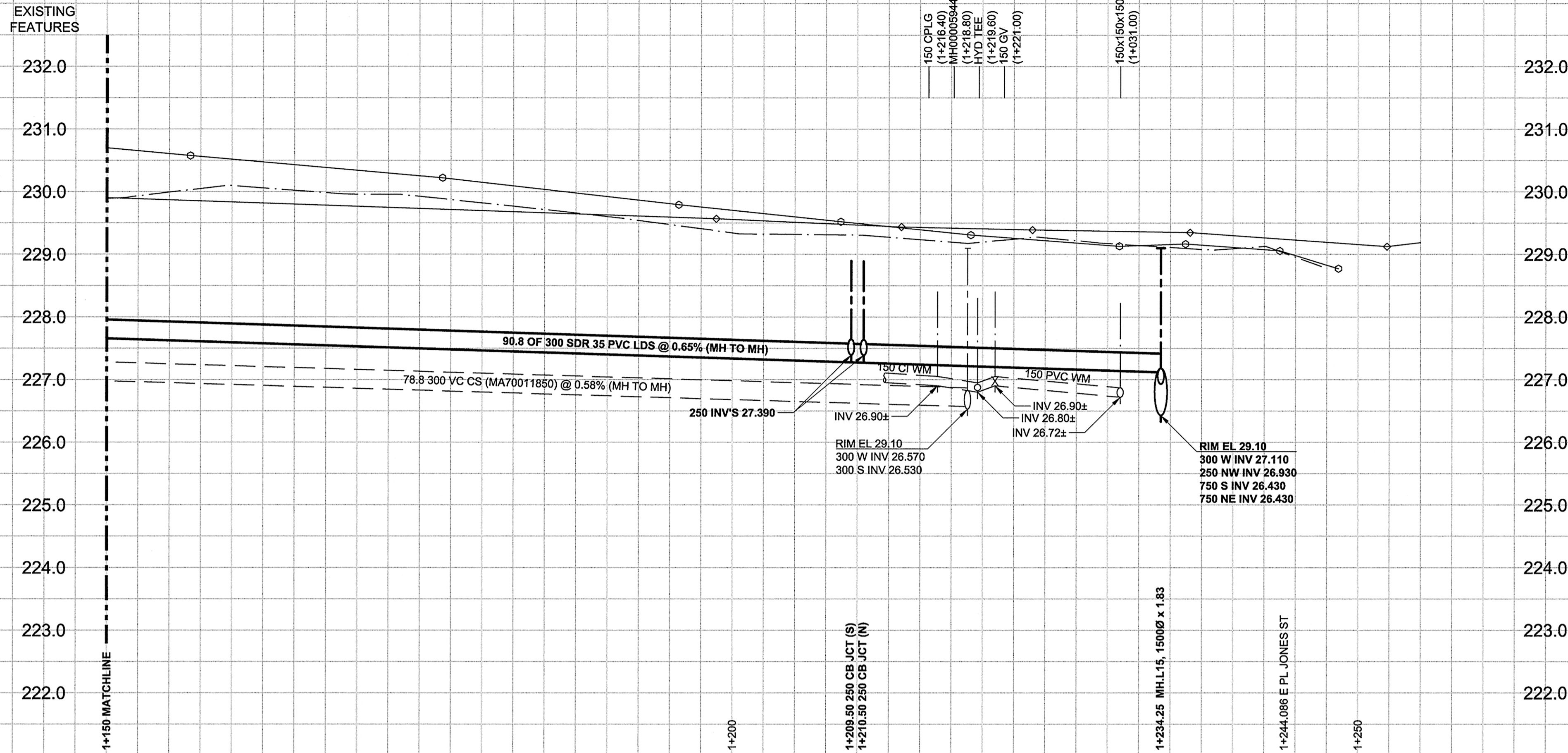


D SIZE 22" x 34" (559mm x 864mm)

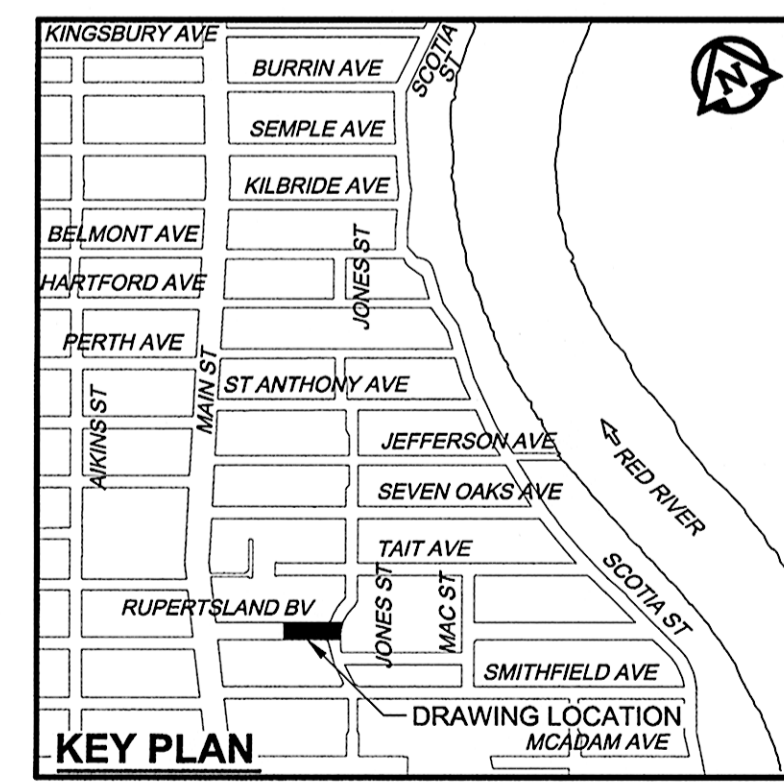
PLOT: 6/15/2012 2:37:49 PM

AECOM FILE NAME: 60219315-SHT-30-Ph01 C-0011.dwg Saved By: BPP/B



**WARNING**  
 IF POWER EQUIPMENT OR EXPLOSIVES ARE TO BE USED FOR EXCAVATION ON THIS PROJECT, THE CONTRACTOR MUST:  
 1) NOTIFY THE GAS COMPANY OF THE PROPOSED LOCATION OF EXCAVATION.  
 2) TAKE PRECAUTION TO AVOID DAMAGE TO GAS COMPANY INSTALLATIONS. SEE PROVINCIAL REGULATION 140/92 FOR DETAILS.

- CONSTRUCTION NOTES:**
- FOR DETAILED TEST HOLE INFORMATION, SEE SPECIFICATION.
  - CONFIRM LOCATION OF ALL WATER & WASTEWATER SERVICES IN THE FIELD.
  - INSTALL NEW SEWERS, CATCHBASIN LEADS AND WATERMANS BY TRENCHLESS METHODS.
  - LOCATION OF SERVICES SHOWN ON DRAWINGS ARE APPROXIMATE.
  - ALL SHAFTS SHALL HAVE CLASS 3 BACKFILL EXCEPTING THOSE ON MAIN STREET WHICH SHALL HAVE CLASS 1 BACKFILL.



**APEGM**  
 Certificate of Authorization  
 AECOM Canada Ltd.  
 No. 4671 Date: Jun 5, 2012

**METRIC**  
 WHOLE NUMBERS INDICATE MILLIMETRES  
 DECIMALIZED NUMBERS INDICATE METRES

BID OPPORTUNITY NO. 430-2012

150 WM	WATERMAIN	150 WM	CURB STOP	150 WM	WATERMAIN	150 WM
Hydrant	HYDRANT	Reducer	REDUCER	Hydrant	HYDRANT	Reducer
Valve	VALVE	Coupling	COUPLING	Valve	VALVE	Coupling
300 LDS	LAND DRAINAGE SEWER	Anode	ANODE	300 LDS	LAND DRAINAGE SEWER	Anode
250 WWS	WASTE WATER SEWER	Hydro	HYDRO	250 WWS	WASTE WATER SEWER	Hydro
Manhole	MANHOLE	MTS	MTS	Manhole	MANHOLE	MTS
Catch Basin	CATCH BASIN	Gas	GAS	Catch Basin	CATCH BASIN	Gas
Curb Inlet	CURB INLET	Testhole	TESTHOLE	Curb Inlet	CURB INLET	Testhole
Culvert	CULVERT	Lamp Standard	LAMP STANDARD	Culvert	CULVERT	Lamp Standard
Pipe Abandonments	PIPE ABANDONMENTS	Tree	TREE	Pipe Abandonments	PIPE ABANDONMENTS	Tree
Survey Bar	SURVEY BAR			Survey Bar	SURVEY BAR	
Existing	LEGEND - PLAN	New	LEGEND - PLAN	Existing	LEGEND - PROFILE	New

**LOCATION APPROVED**  
 UNDERGROUND STRUCTURES  
 SUPR. U/G STRUCTURES COMMITTEE DATE  
 NOTE:  
 LOCATION OF UNDERGROUND STRUCTURES AS SHOWN ARE BASED ON THE BEST INFORMATION AVAILABLE. BUT NO GUARANTEE IS GIVEN THAT ALL EXISTING UTILITIES ARE SHOWN OR THAT THE GIVEN LOCATIONS ARE EXACT. CONFIRMATION OF EXISTENCE AND EXACT LOCATION OF ALL SERVICES MUST BE OBTAINED FROM THE INDIVIDUAL UTILITIES BEFORE PROCEEDING WITH CONSTRUCTION.

BM 13-009	N.E. Cor. Jefferson Ave. & Main St. Tilt. in S. Conc. foundation of Lift Station, 0.5m W. & 0.1m below brick of S.E. Cor. of Bldg.	ELEV 230.692m
NO.	ISSUED FOR CONSTRUCTION	12/06/06 ADL
NO.	REVISIONS	YYMMDD BY

DESIGNED BY	JEB	CHECKED BY	[Signature]
DRAWN BY	ADL	APPROVED BY	[Signature]
HOR. SCALE	1:250	RELEASED FOR CONSTRUCTION	[Signature]
VERT. SCALE	1:50	DATE	Jun 5, 2012

PROFESSIONAL'S SEAL  
 PROVINCE OF MANITOBA  
 E.D.J. TOUPIN  
 Member  
 23484  
 Jun 5, 2012  
 CONSULTANT DRAWING NO.  
 60219315-SHT-30-Ph01 C-0011.dwg

**THE CITY OF WINNIPEG**  
 WATER AND WASTE DEPARTMENT

**JEFFERSON EAST**  
 COMBINED SEWER RELIEF  
 CONTRACT 1  
 RUPERTSLAND BOULEVARD  
 110m EAST OF MAIN STREET TO  
 JONES STREET

SHEET 11 OF 20  
 CITY DRAWING NUMBER  
**10161**  
 REV 0