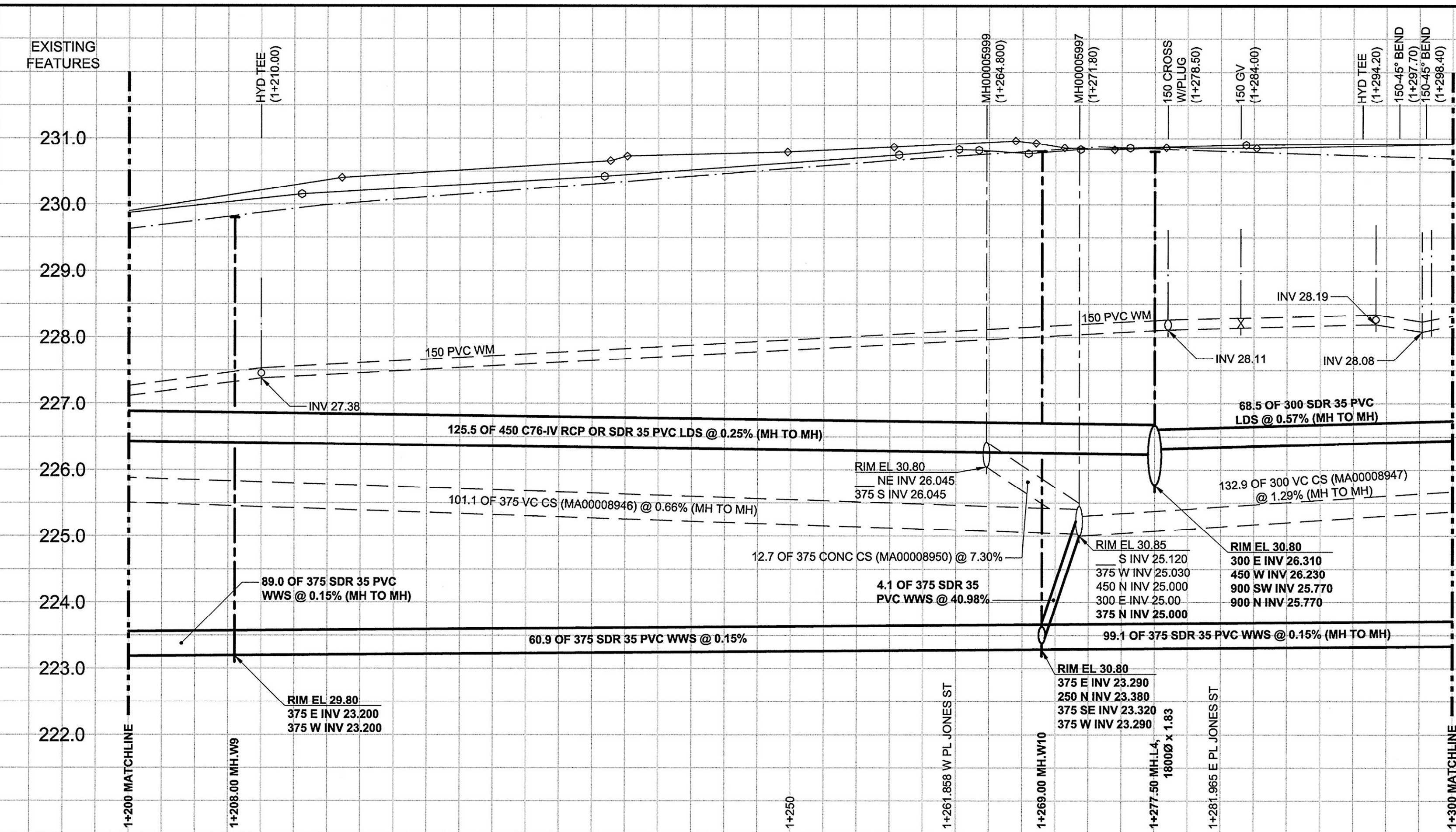
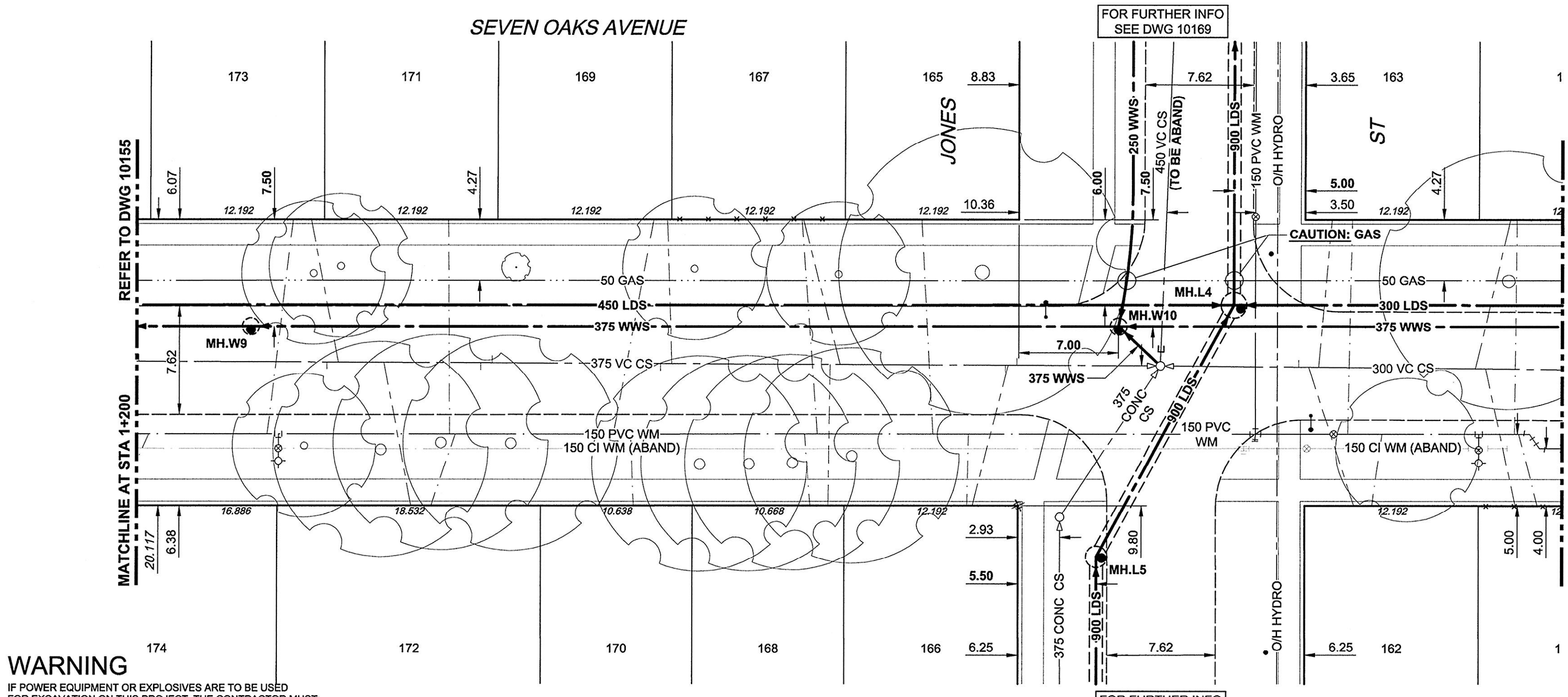


D SIZE 22" x 34" (559mm x 864mm)

PLOT: 6/5/2012 2:27:56 PM

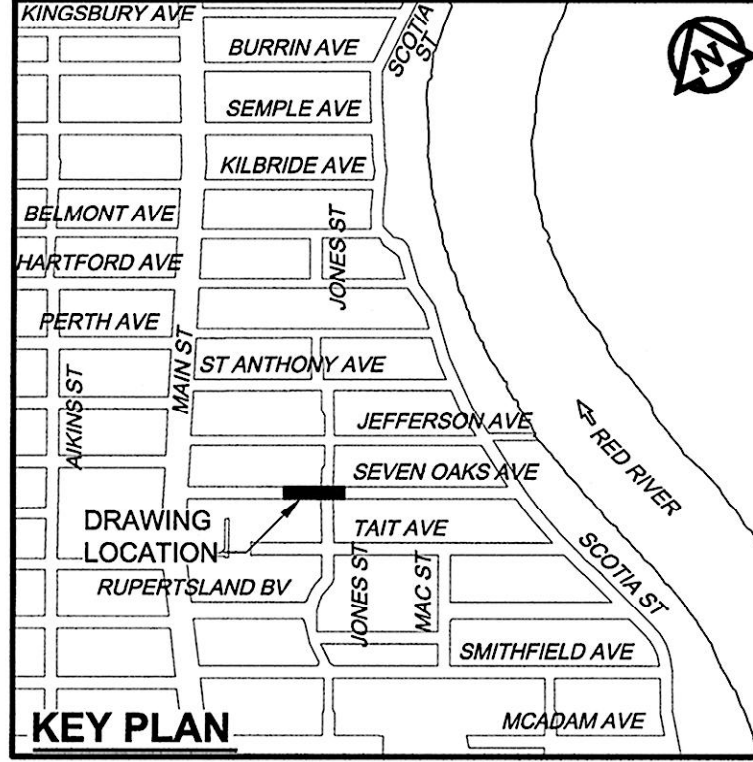


CHAINAGE ALONG S PL



WARNING
 IF POWER EQUIPMENT OR EXPLOSIVES ARE TO BE USED FOR EXCAVATION ON THIS PROJECT, THE CONTRACTOR MUST:
 1) NOTIFY THE GAS COMPANY OF THE PROPOSED LOCATION OF EXCAVATION.
 2) TAKE PRECAUTION TO AVOID DAMAGE TO GAS COMPANY INSTALLATIONS.
 SEE PROVINCIAL REGULATION 140/92 FOR DETAILS

- CONSTRUCTION NOTES:**
- FOR DETAILED TEST HOLE INFORMATION, SEE SPECIFICATION.
 - CONFIRM LOCATION OF ALL WATER & WASTEWATER SERVICES IN THE FIELD.
 - INSTALL NEW SEWERS, CATCHBASIN LEADS AND WATERMAINS BY TRENCHLESS METHODS.
 - LOCATION OF SERVICES SHOWN ON DRAWINGS ARE APPROXIMATE.
 - ALL SHAFTS SHALL HAVE CLASS 3 BACKFILL EXCEPTING THOSE ON MAIN STREET WHICH SHALL HAVE CLASS 1 BACKFILL.



AECOM
 Certificate of Authorization
 AECOM Canada Ltd.
 No. 4671 Date: *Jan 5, 2012*

METRIC
 WHOLE NUMBERS INDICATE MILLIMETRES
 DECIMALIZED NUMBERS INDICATE METRES

150 WM	WATERMAIN	150 WM	CURB STOP	150 WM	WATERMAIN	150 WM	LOCATION APPROVED
	HYDRANT		REDUCER		HYDRANT		UNDERGROUND STRUCTURES
	VALVE		COUPLING		VALVE		SUPR. U/G STRUCTURES COMMITTEE
	LAND DRAINAGE SEWER		ANODE		LAND DRAINAGE SEWER		DATE
	WASTE WATER SEWER		HYDRO		WASTE WATER SEWER		NOTE:
	MANHOLE		MTS		PAVEMENT CROWN		LOCATION OF UNDERGROUND STRUCTURES AS SHOWN ARE BASED ON THE BEST INFORMATION AVAILABLE. BUT NO GUARANTEE IS GIVEN THAT ALL EXISTING UTILITIES ARE SHOWN OR THAT THE GIVEN LOCATIONS ARE EXACT. CONFIRMATION OF EXISTENCE AND EXACT LOCATION OF ALL SERVICES MUST BE OBTAINED FROM THE INDIVIDUAL UTILITIES BEFORE PROCEEDING WITH CONSTRUCTION.
	CATCH BASIN		GAS		N/W PROPERTY LINE		
	CURB INLET		TESTHOLE		S/E PROPERTY LINE		
	CULVERT		LAMP STANDARD		N/W GUTTER		
	PIPE ABANDONMENTS		TREE		S/E GUTTER		
	SURVEY BAR						
	EXISTING		LEGEND - PLAN		LEGEND - PROFILE		

NO.	REVISIONS	DATE	BY
0	ISSUED FOR CONSTRUCTION	12/06/06	ADL

DESIGNED BY	JEB	CHECKED BY	<i>[Signature]</i>
DRAWN BY	ADL	APPROVED BY	<i>[Signature]</i>
HOR. SCALE	1:250	RELEASED FOR CONSTRUCTION	<i>[Signature]</i>
VERT. SCALE	1:50	DATE	<i>Jan 5, 2012</i>

PROFESSIONAL'S SEAL
E.J. TOUPIN
 Member
 23484
Jan 5, 2012
 REGISTERED PROFESSIONAL ENGINEER
 CONSULTANT DRAWING NO.
 60219315-SHT-30-PH01 C-0006.dwg

THE CITY OF WINNIPEG
WATER AND WASTE DEPARTMENT

JEFFERSON EAST
COMBINED SEWER RELIEF
CONTRACT 1
SEVEN OAKS AVENUE
 160m EAST OF MAIN STREET TO
 280m WEST OF SCOTIA STREET

SHEET 6 OF 20
 CITY DRAWING NUMBER
10156
 REV 0

BID OPPORTUNITY NO. 430-2012

AECOM REVIEW DRFT CHK
 AECOM FILE NAME: 60219315-SHT-30-PH01 C-0006.dwg Saved By: