

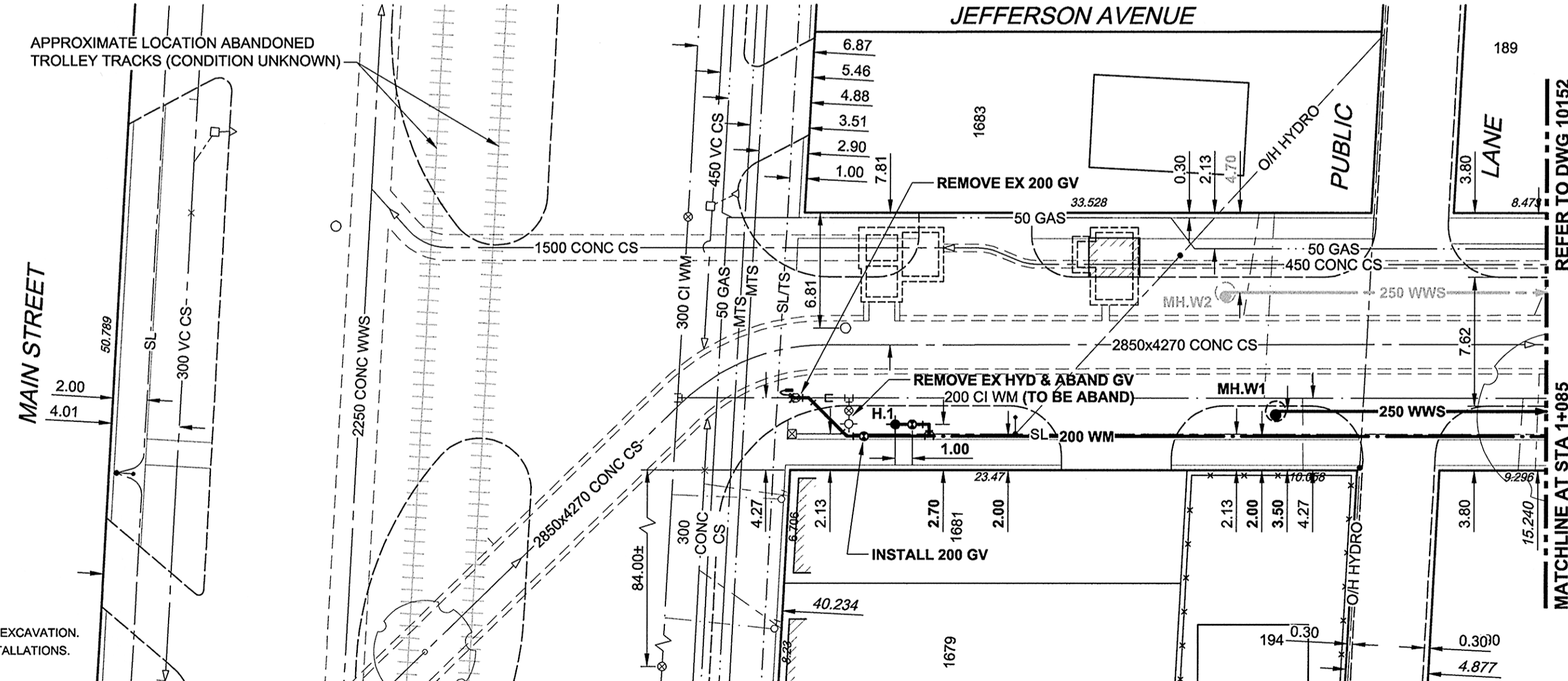
D SIZE 22" x 34" (594mm x 864mm)

PLOT: 04/2012 12:39:24 PM

EXISTING FEATURES  
231.0  
230.0  
229.0  
228.0  
227.0  
226.0  
225.0  
224.0  
223.0  
222.0  
221.0  
220.0  
219.0  
218.0

231.0  
230.0  
229.0  
228.0  
227.0  
226.0  
225.0  
224.0  
223.0  
222.0  
221.0  
220.0  
219.0  
218.0

CHAINAGE ALONG S PL



REFER TO DWG 10152  
MATCHLINE AT STA 1+085

**WATER SERVICE INFORMATION**

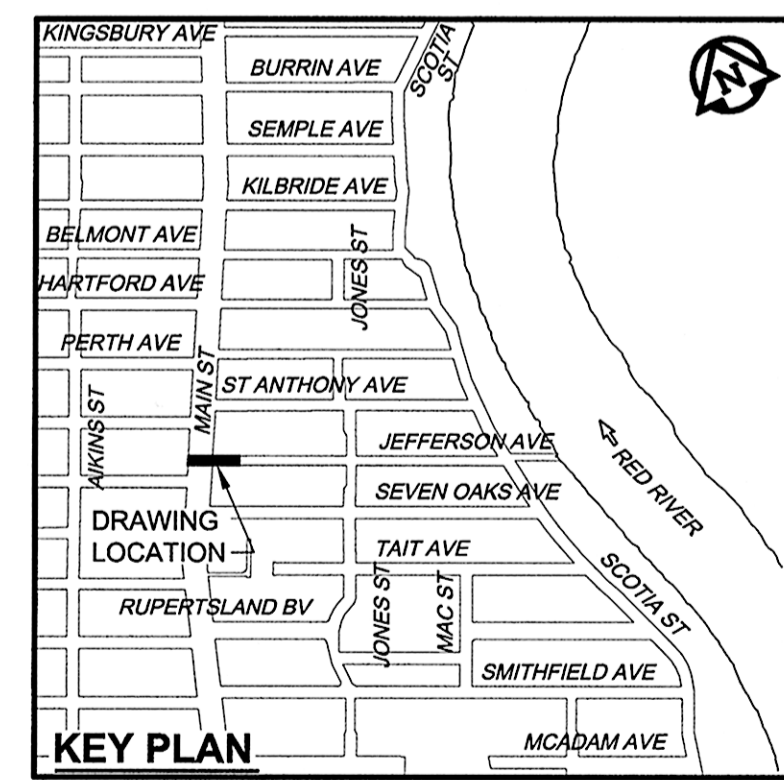
| ADDRESS       | DISTANCE PROPERTY | SIZE(mm) & TYPE | SHORT & LONG MEASUREMENT            | CORPORATION LOCATION | REMARKS |
|---------------|-------------------|-----------------|-------------------------------------|----------------------|---------|
| 1681 MAIN     | 2.40              | 20 COPPER       | 1.2m SNL BLDG 1.8m SSL JEFFERSON    | OPP S/C              |         |
| 1683 MAIN     | 0.18              | 25 COPPER       | 4.1m EWL BLDG 27.7m EEL OF MAIN     | OPP S/C              |         |
| 189 JEFFERSON |                   |                 |                                     |                      | NO INFO |
| 190 JEFFERSON | 0.30              | 16 LEAD         | 1.6m WEL OF HOUSE 43.1m EEL OF MAIN | 0.2m E OF S/C        |         |
| 194 JEFFERSON |                   |                 |                                     |                      | NO INFO |

**SEWER SERVICE INFORMATION**

| ADDRESS       | PL TIE (SHORT/LONG) | JUNCTION TIE             | REMARKS |
|---------------|---------------------|--------------------------|---------|
| 1681 MAIN     |                     |                          | NO INFO |
| 1683 MAIN     |                     | 11.m E OF W MH           |         |
| 189 JEFFERSON |                     |                          | NO INFO |
| 190 JEFFERSON |                     | 182.2m W OF MH AT NORMAN |         |
| 194 JEFFERSON |                     |                          | NO INFO |

**CONSTRUCTION NOTES:**

- FOR DETAILED TEST HOLE INFORMATION, SEE SPECIFICATION.
- CONFIRM LOCATION OF ALL WATER & WASTEWATER SERVICES IN THE FIELD.
- INSTALL NEW SEWERS, CATCHBASIN LEADS AND WATERMANS BY TRENCHLESS METHODS.
- MINIMUM COVER TO TOP OF PROPOSED WATERMAIN SHALL BE 2.5m FROM STREET CENTERLINE.
- INSTALL ALL HYDRANTS WITH FLANGE ELEVATION 50mm TO 150mm ABOVE FINISHED GRADE.
- REPLACE ALL EXISTING LEAD SERVICES FROM PROPOSED WATERMAIN TO PROPERTY LINE.
- NOTIFY ALL AFFECTED RESIDENTS AND BUSINESSES 24 HOURS IN ADVANCE OF ANY SHUT DOWN OR DISRUPTION OF SERVICE.
- LOCATION OF SERVICES SHOWN ON DRAWINGS ARE APPROXIMATE.
- PROVIDE TRENCH INSULATION WHERE 2.5m OF COVER CANNOT BE PROVIDED FOR WATER SERVICES.
- ALL SHAFTS SHALL HAVE CLASS 3 BACKFILL EXCEPTING THOSE ON MAIN STREET WHICH SHALL HAVE CLASS 1 BACKFILL.
- RENEW SEWER SERVICES TO PROPERTY LINE AND PLUG EXISTING SERVICE AS PER SD-021.
- HYDRANT ASSEMBLIES SHALL BE FULLY MECHANICALLY RESTRAINED. MECHANICAL RESTRAINTS SHALL BE COATED WITH PETROLATUM MASTIC AND TAPE (DENSO OR APPROVED EQUAL).
- CONFIRM ELEVATION OF SEWER SERVICES FOR 1168 MAIN, 189 JEFFERSON AND 187 JEFFERSON BY SOFT DIGGING PRIOR TO INSTALLING 250 WWS ON JEFFERSON.
- TEMPORARY OVERHEAD STREET LIGHTING AND PERMANENT STREET LIGHTING RESTORATIONS BY OTHERS.

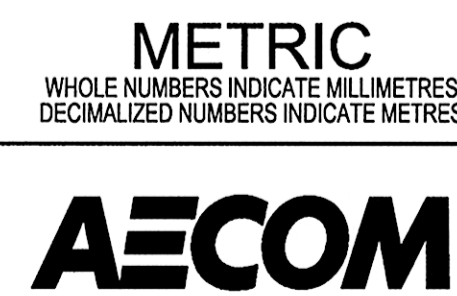


**WARNING**  
IF POWER EQUIPMENT OR EXPLOSIVES ARE TO BE USED FOR EXCAVATION ON THIS PROJECT, THE CONTRACTOR MUST:  
1) NOTIFY THE GAS COMPANY OF THE PROPOSED LOCATION OF EXCAVATION.  
2) TAKE PRECAUTION TO AVOID DAMAGE TO GAS COMPANY INSTALLATIONS.  
SEE PROVINCIAL REGULATION 140/92 FOR DETAILS

| 150 WM | WATERMAIN           | 150 WM | CURB STOP     | 150 WM | WATERMAIN           | 150 WM | LOCATION APPROVED      |
|--------|---------------------|--------|---------------|--------|---------------------|--------|------------------------|
| ○      | HYDRANT             | ●      | REDUCER       | +      | HYDRANT             | +      | UNDERGROUND STRUCTURES |
| ○      | VALVE               | ○      | COUPLING      | ×      | VALVE               | +      |                        |
| ⊙      | LAND DRAINAGE SEWER | ⊙      | ANODE         | ○      | LAND DRAINAGE SEWER | ⊙      |                        |
| ⊙      | WASTE WATER SEWER   | ⊙      | HYDRO         | ○      | WASTE WATER SEWER   | ⊙      |                        |
| ○      | MANHOLE             | ●      | MTS           | ○      | PAVEMENT CROWN      | ○      |                        |
| □      | CATCH BASIN         | ■      | GAS           | ○      | N/W PROPERTY LINE   | ○      |                        |
| △      | CURB INLET          | ▲      | TESTHOLE      | ○      | S/E PROPERTY LINE   | ○      |                        |
| ▭      | CULVERT             | ▭      | LAMP STANDARD | ○      | N/W GUTTER          | ○      |                        |
| →      | PIPE ABANDONMENTS   | →      | TREE          | ○      | S/E GUTTER          | ○      |                        |
| +      | SURVEY BAR          |        |               |        |                     |        |                        |
| +      | EXISTING            | +      | LEGEND - PLAN | +      | NEW                 | +      |                        |

BM 13-009 N.E. Cor. Jefferson Ave. & Main St. Tbl. in S. Conc. foundation of Lift Station, 0.5m W. & 0.1m below brick of S.E. Cor. of Bldg.  
ELEV 230.692m

NO. REVISIONS  
0 ISSUED FOR CONSTRUCTION 12/06/06 ADL  
12/06/06 ADL



BID OPPORTUNITY NO. 430-2012

**THE CITY OF WINNIPEG**  
WATER AND WASTE DEPARTMENT

**JEFFERSON EAST**  
COMBINED SEWER RELIEF  
CONTRACT 1  
JEFFERSON AVENUE  
MAIN STREET TO  
180m WEST OF JONES STREET

SHEET 1 OF 20  
CITY DRAWING NUMBER  
10151  
REV 0

AECOM REVIEW DRAFT CHK