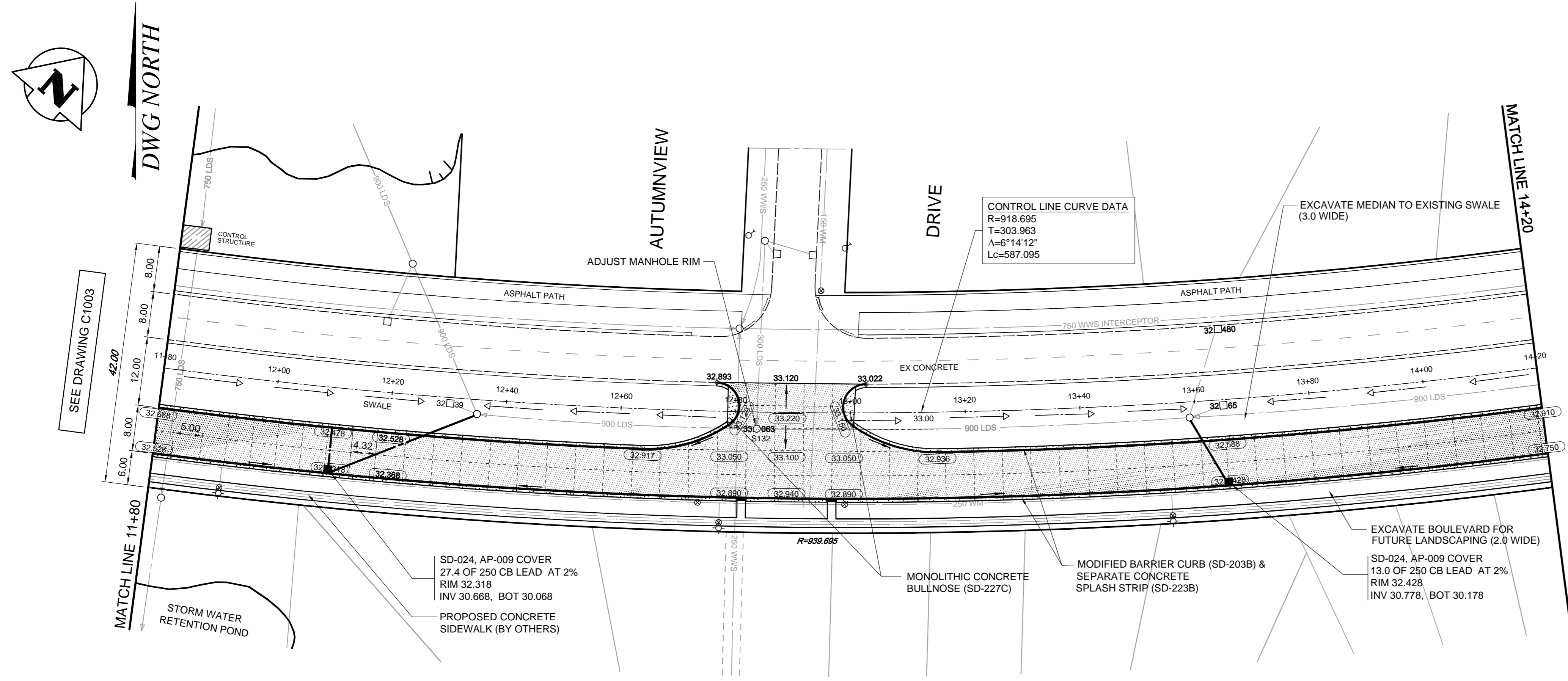


WAVERLEY STREET CROSS SECTION
(STA 10+31.3 TO STA 14+95.6)
NTS



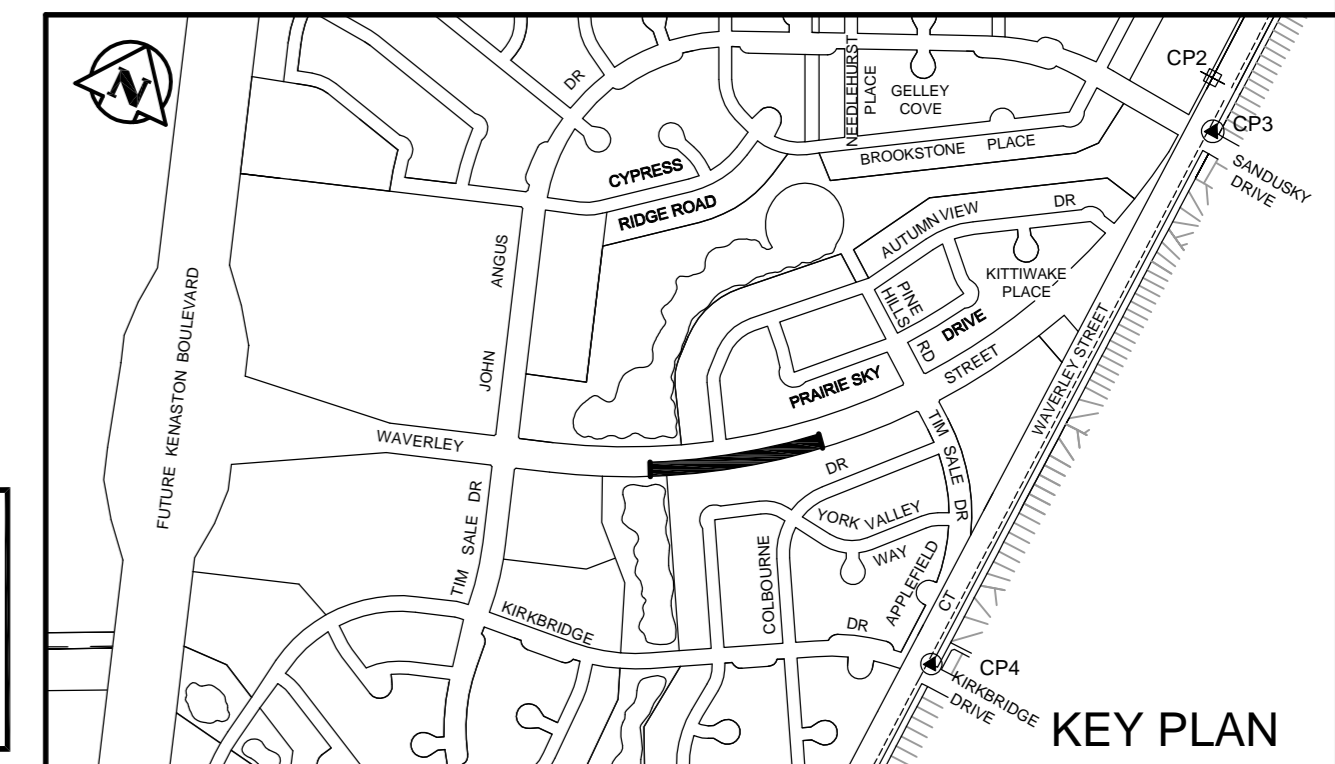
CONSTRUCTION NOTES

- ALL PAVEMENT DIMENSIONS ARE TO BACK OF CURB.
- ALL BACKFILL UNDER BOULEVARD TO BE CLASS 4 UNLESS OTHERWISE NOTED.
- ALL PIPE UNDER EXISTING AND FUTURE PAVEMENT TO BE INSTALLED USING TRENCHLESS METHODS, WHERE NOT POSSIBLE, OPEN CUT WITH CLASS 2 BACKFILL.
- ALL CURB RAMP IN ACCORDANCE WITH SD-228A STANDARD LAYOUT, C & E.
- SUBDRAINS AT LOW POINTS (5.0m EACH WAY AS PER SD-245).

GENERAL NOTES

- CHAINAGE IS ALONG CENTRE LINE OF WAVERLEY STREET R.O.W.
- SEE DRAWING C1009 FOR WAVERLEY STREET GEOMETRICS.

Coordinate Control Survey Monuments				
No.	Description	Northing	Easting	Elevation
CP 1	IB CP1	3000.000	10000.000	232.535
CP 2	IB CP3	2741.671	10000.000	232.363
CP 3	GBM82024	2675.060	10035.366	232.259
CP 4	GBM82025	1827.090	10031.834	232.917



APEGM
Certificate of Authorization
Wardrop Engineering Inc.
No. 195 Expiry: April 30, 2013

150 WM	WATERMAIN	150 WM	→	SWALE	→	RIGHT-OF-WAY
400 FM	FEEDERMAIN	400 FM	○	MANHOLE	●	GAS
300 LDS	LAND DRAINAGE SEWER	300 LDS	□	CATCHBASIN	■	HYDRO
250 WWS	WASTEWATER SEWER	250 WWS	□	HYDRO BOX	■	MTS
300 CS	COMBINED SEWER	300 CS	●	HYDRO POLE	○	SPRINKLER
200 FCM	FORCEMAIN	200 FCM	●	LIGHT STANDARD	○	ELEVATION
	JUNCTIONS		←	ANCHOR	⊕	SIDEWALK
	HYDRANT		⊕	TREE	⊕	CURB
	VALVE		⊕	SURVEY BAR	⊕	ASPHALT
	CURB STOP		⊕	SIGNAL CONTROLLER	⊕	CONCRETE
EXISTING	LEGEND-PLAN	PROPOSED	EXISTING	LEGEND-PLAN	PROPOSED	EXISTING

LOCATION APPROVED UNDERGROUND STRUCTURES

SUPV. U/G STRUCTURES COMMITTEE DATE

NOTE: LOCATION OF UNDERGROUND STRUCTURES AS SHOWN ARE BASED ON THE BEST INFORMATION AVAILABLE. BUT NO GUARANTEE IS GIVEN THAT ALL EXISTING UTILITIES ARE SHOWN OR THAT THE GIVEN LOCATIONS ARE EXACT. CONFIRMATION OF EXISTENCE AND EXACT LOCATION OF ALL SERVICES MUST BE OBTAINED FROM THE INDIVIDUAL UTILITIES BEFORE PROCEEDING WITH CONSTRUCTION.

B.M. ELEV.	NO.	ISSUED FOR TENDER	DATE	BY
	00	ISSUED FOR TENDER	12.06.11	TF
		REVISIONS		

TETRA TECH

DESIGNED BY: TF
DRAWN BY: GMD

CHECKED BY:
APPROVED BY:

HOR. SCALE: 1 : 500
VERTICAL: 1 : 20

RELEASED FOR CONSTRUCTION

DATE: 12.04.12

PRELIMINARY DRAWING

NOT TO BE USED FOR CONSTRUCTION

CONSULTANT DRAWING NO. 1200070300-DWG-C1004-00

THE CITY OF WINNIPEG
PUBLIC WORKS DEPARTMENT
ENGINEERING DIVISION

WAVERLEY STREET EXTENSION
KENASTON BOULEVARD (FUTURE) TO TIM SALE DRIVE

WAVERLEY STREET (EASTBOUND LANES)
101m WEST OF AUTUMNVIEW DRIVE TO
151m WEST OF TIM SALE DRIVE

CITY DRAWING NUMBER
SHEET 4 OF 11
C1004